

PJM Interconnection Workshop 2 Stakeholder Presentation

Samsung Renewable Energy, Inc.



THE TRUSTED PARTNER

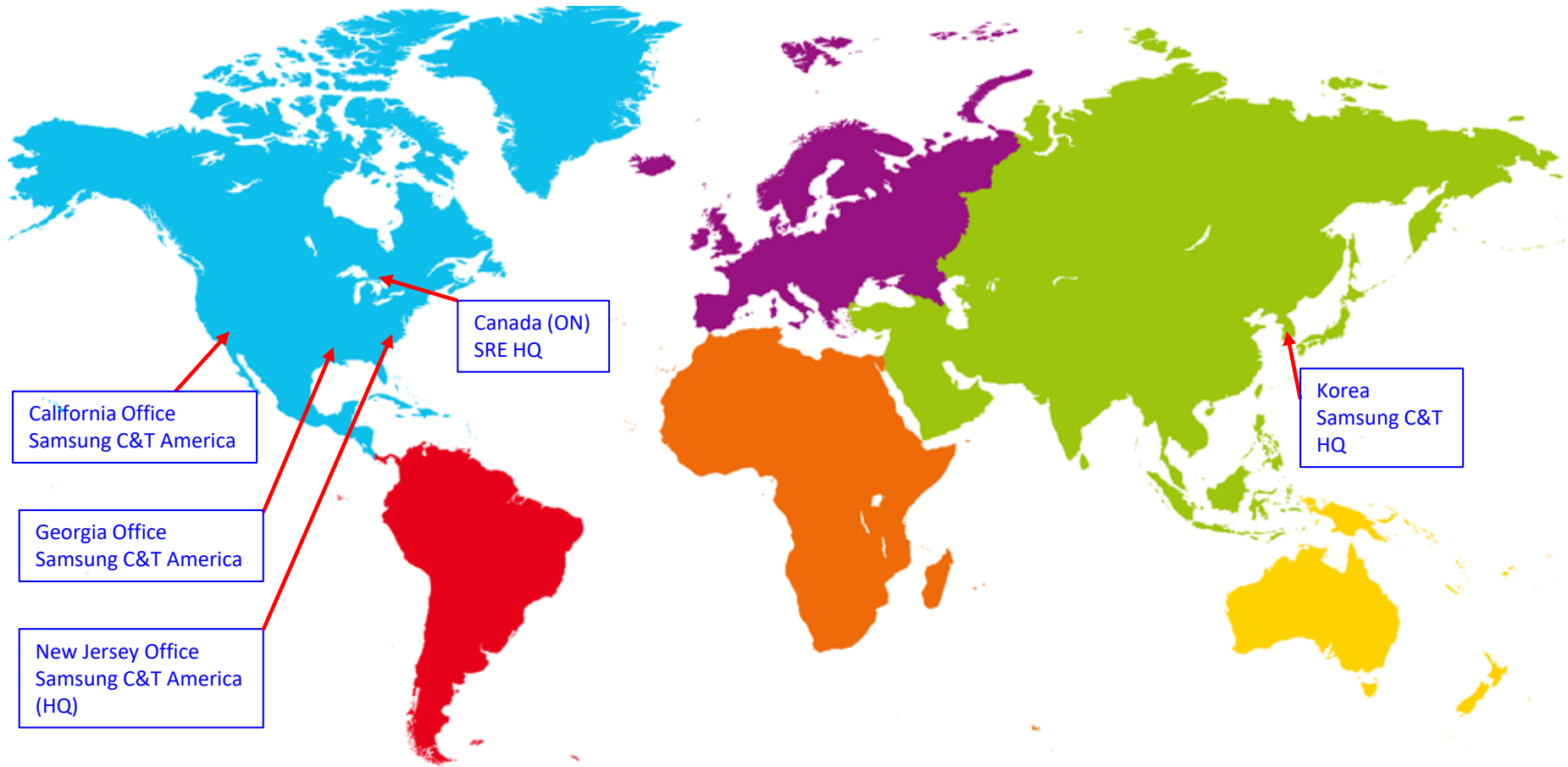
POINTS US
TO THE SMARTER
FUTURE

Senior Engineering Manager
Wonbae Choi
Dec 11, 2020

AGENDA

- 1. Company Introduction 3**
- 2. Issue #1 – Communication 4**
- 3. Issue #2 – Delayed SIS/FAC Study 6**
- 4. Q & A 8**

1. Company Introduction



Europe

- Bulgaria PV
- Romania PV
- Slovakia PV
- Slovenia PV
- Italy PV

Asia

- South Korea PV
- Australia PV

Canada

- Ontario Wind/PV
- Alberta PV

US

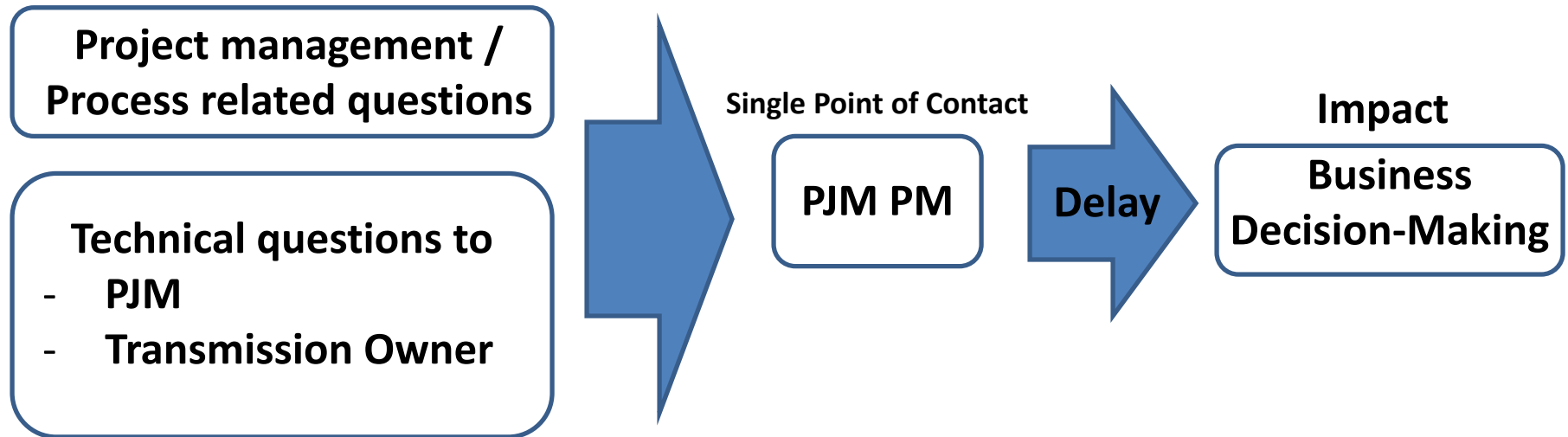
- CAISO
- PJM
- MISO
- ERCOT
- Other Utilities

Mexico

- Mexico PV

2. Issue #1 – Communication

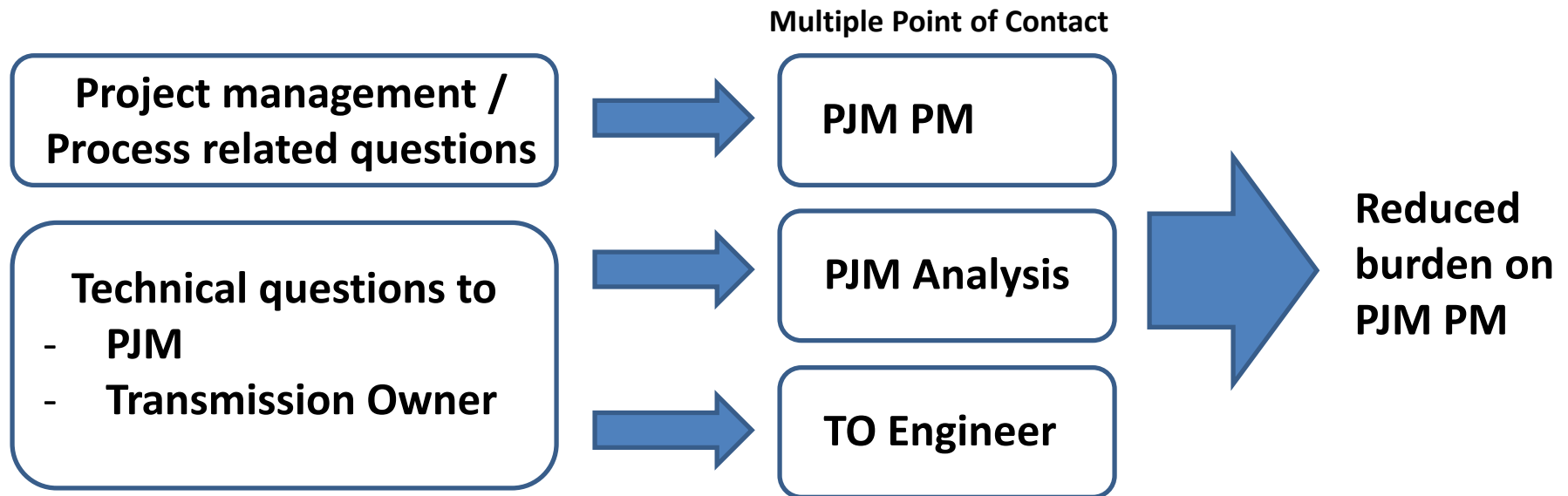
Challenge



Ex) It took a month to get a reply from PJM PM regarding urgent project specific questions.

2. Issue #1 – Communication

Process Improvement Idea



Currently, only one person in charge, PM, takes care of everything, which can lead to delays in communication between IC and PJM. This issue could be addressed by designating multiple representatives for each area highlighted in the above diagram during a scoping meeting.

2. Issue #2 – Delayed SIS/FAC Study

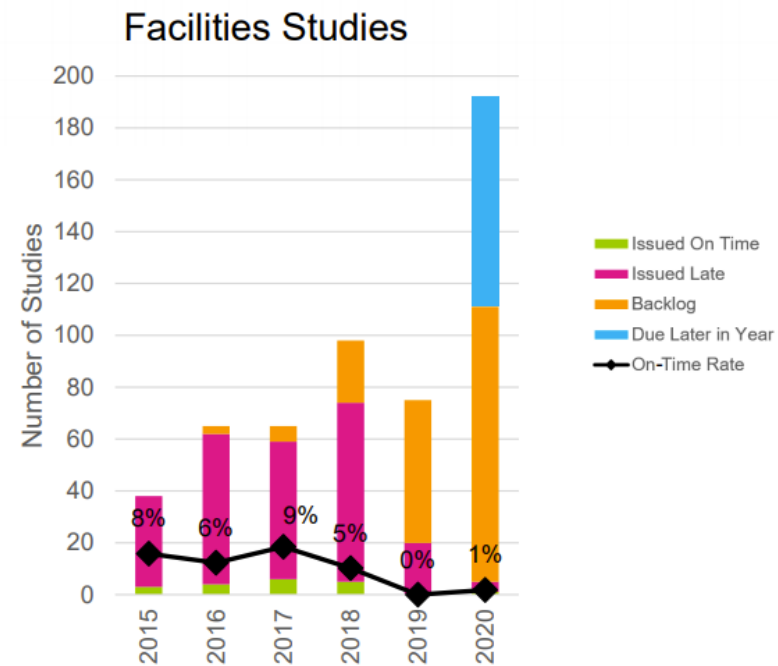
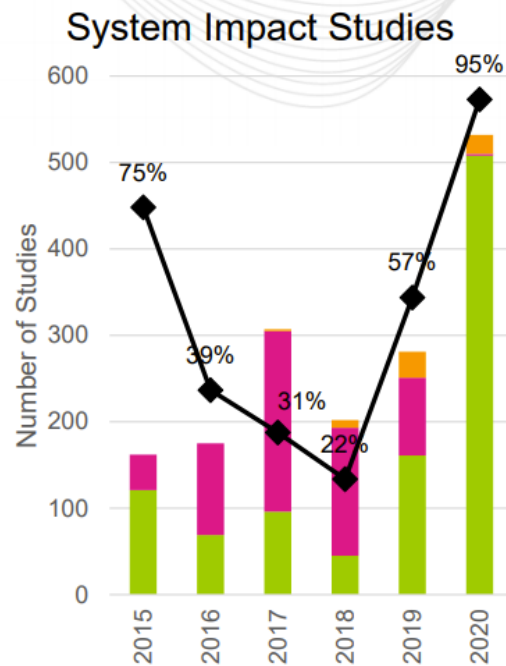
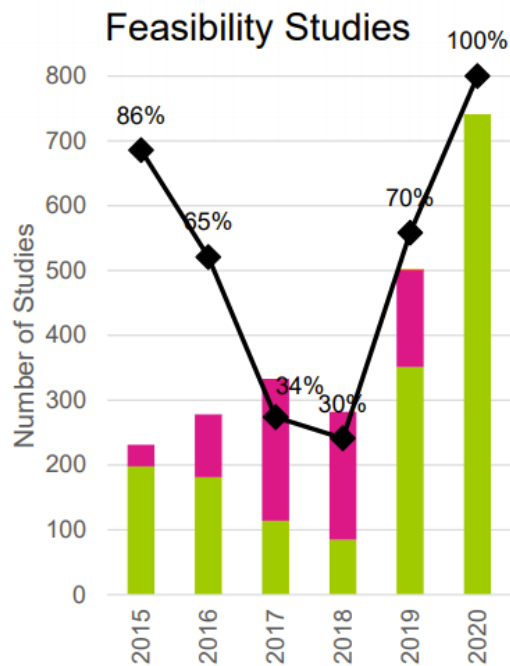
Challenge

- Delayed SIS restudy or facility study results



Study Volume and On-Time Rates

As of Oct. 20, 2020



(Source – PJM Interconnection Workshop #1)

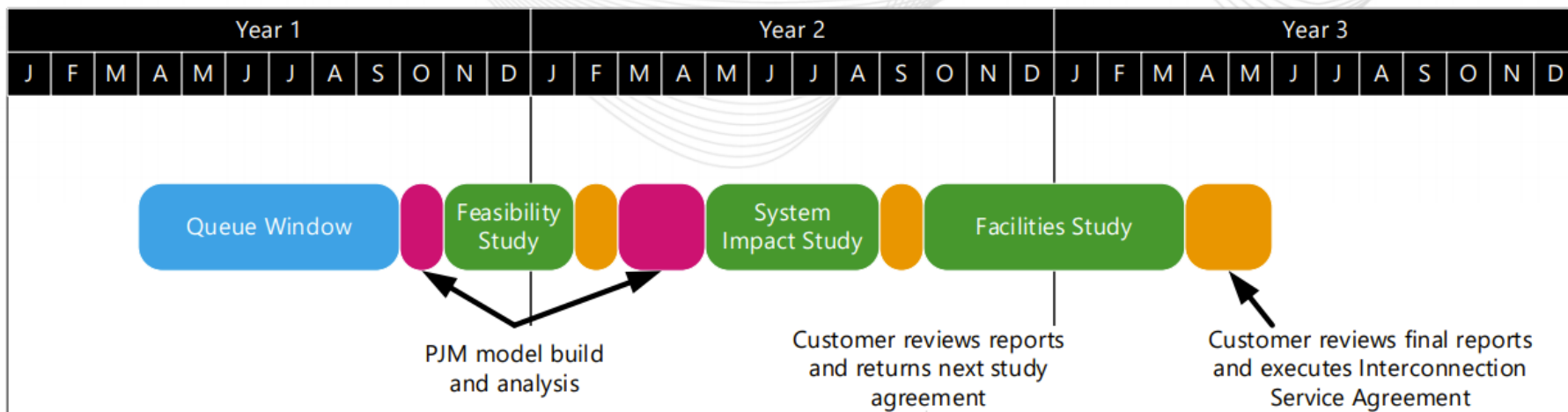
2. Issue #2 – Delayed SIS/FAC Study

Process Improvement Idea

Among the various tasks performed during the SIS phase, 'Stability Analysis' requires the most time. Therefore, if the stability analysis can be performed during the FAC study phase, SIS phase will be completed quicker so that the facility study phase can be started earlier.



Interconnection Process Timing





SAMSUNG RENEWABLE ENERGY INC.

Q&A