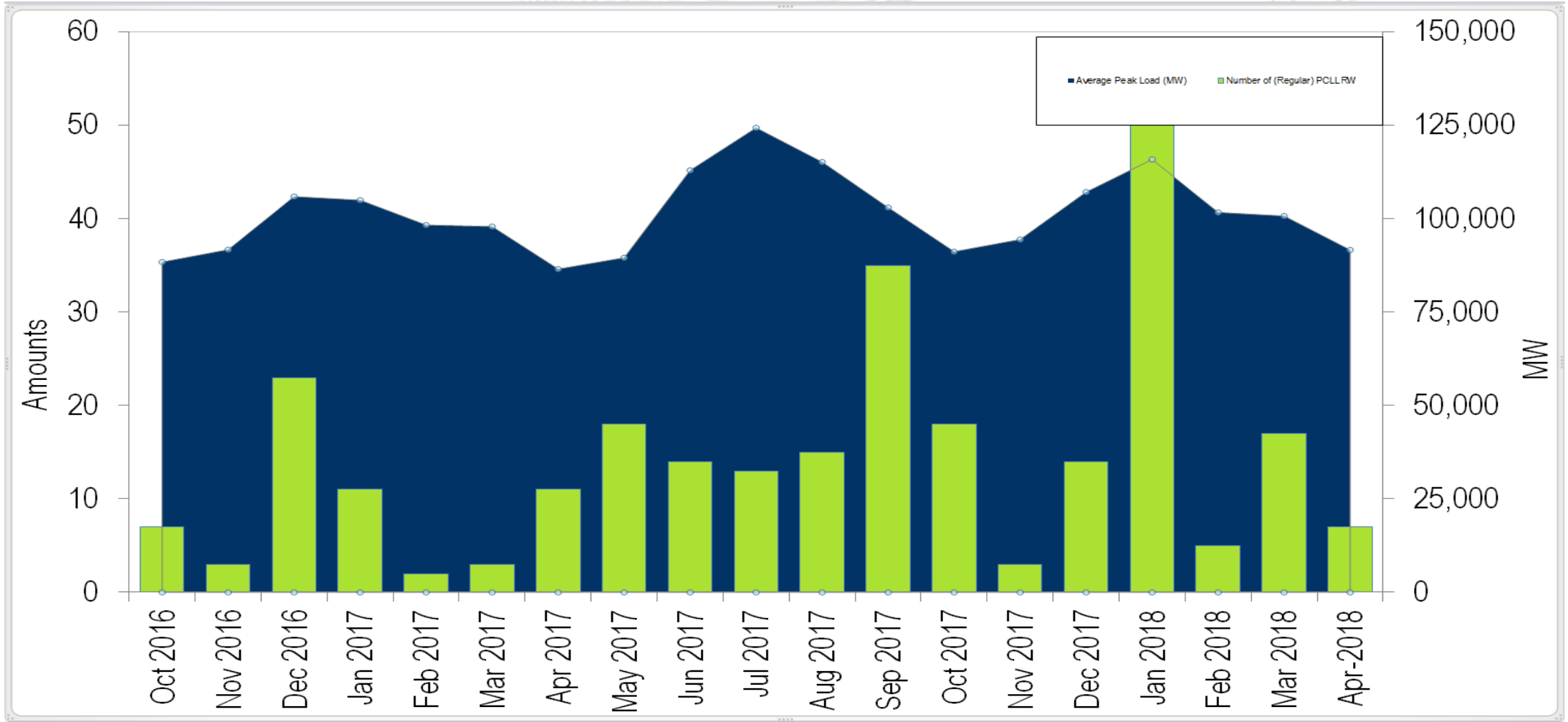
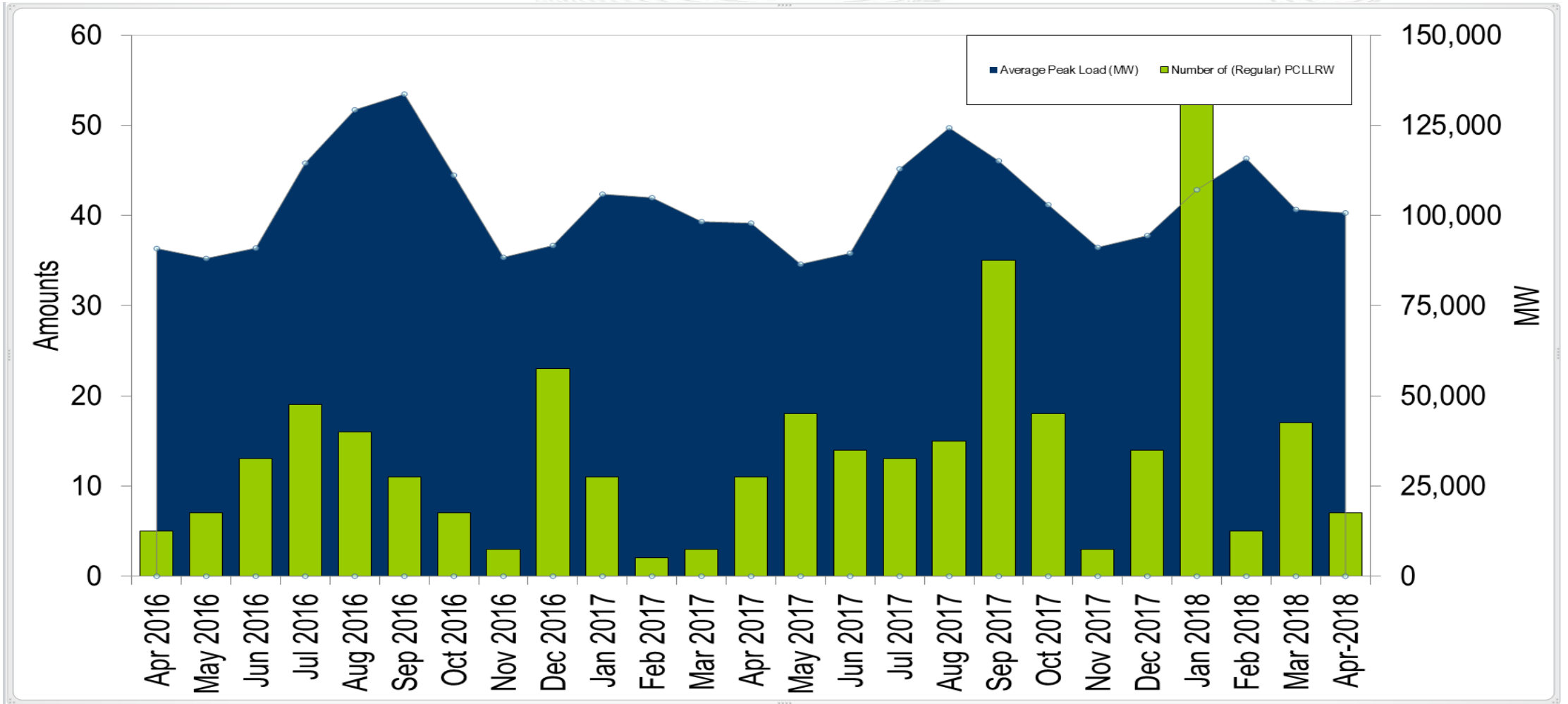


18 Months







Average Peak Load Data

Month	Average Peak Load (MW)	Number of PCLLRW
Jan 2014	117,789	173
Feb 2014	111,055	68
Mar 2014	105,587	45
Apr 2014	88,431	25
May 2014	92,707	56
Jun 2014	114,221	49
Jul 2014	117,323	36
Aug 2014	113,490	10
Sep 2014	101,438	23
Oct 2014	89,060	19
Nov 2014	99,818	20
Dec 2014	104,920	30
Jan 2015	113,914	33
Feb 2015	121,494	107
Mar 2015	101,877	48
Apr 2015	86,604	28
May 2015	98,055	85
Jun 2015	112,540	57
Jul 2015	122,258	34
Aug 2015	119,851	28
Sep 2015	104,901	38
Oct 2015	87,425	41
Nov 2015	91,008	23
Dec 2015	95,918	13
Jan 2016	110,271	24
Feb 2016	106,331	21
Mar 2016	90,851	10
Apr 2016	88,099	24
May 2016	90,963	15
Jun 2016	114,556	39
Jul 2016	129,287	46
Aug 2016	133,657	45
Sep 2016	111,160	52
Oct 2016	88,384	22
Nov 2016	91,692	13
Dec 2016	105,904	53
Jan 2017	104,936	21
Feb 2017	98,302	5
Mar 2017	97,874	12
Apr 2017	86,505	30
May 2017	89,537	23
Jun 2017	112,930	33
Jul 2017	124,301	39
Aug 2017	115,149	30
Sep 2017	102,984	35
Oct 2017	91,170	18
Nov 2017	94,420	3
Dec 2017	107,117	14
Jan 2018	115,817	57
Feb 2018	101,658	5
Mar 2018	100,698	17
Apr 2018	91,620	7