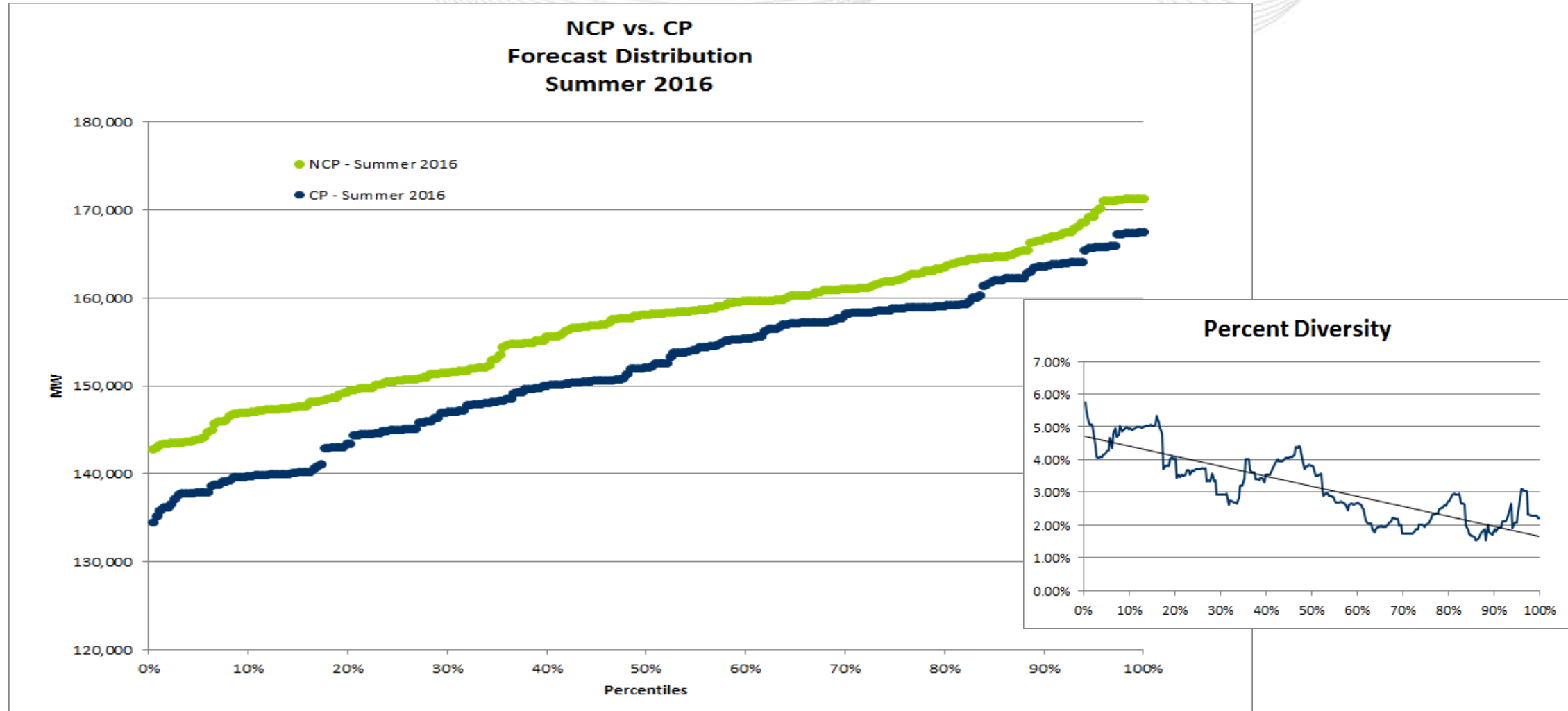


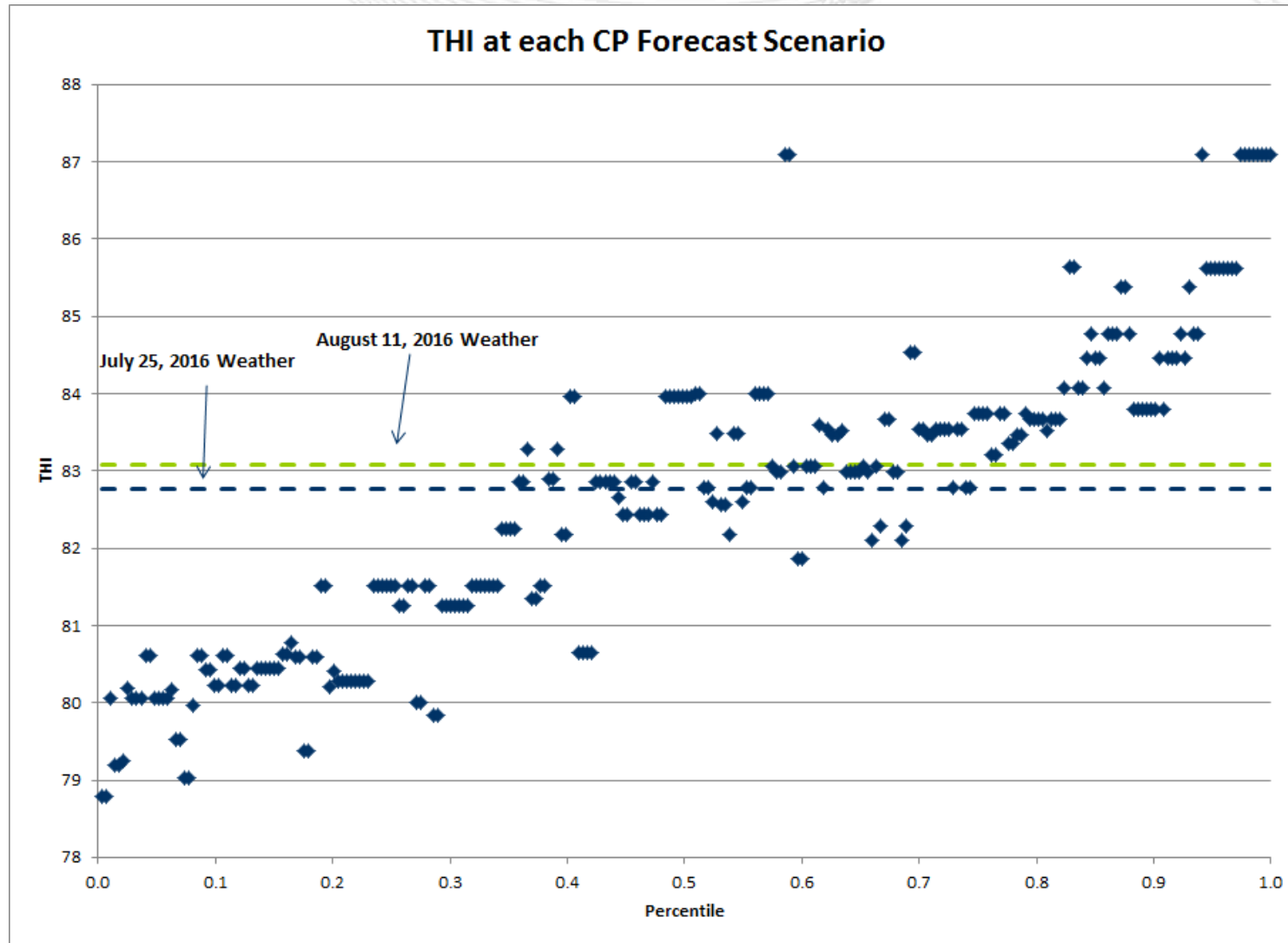


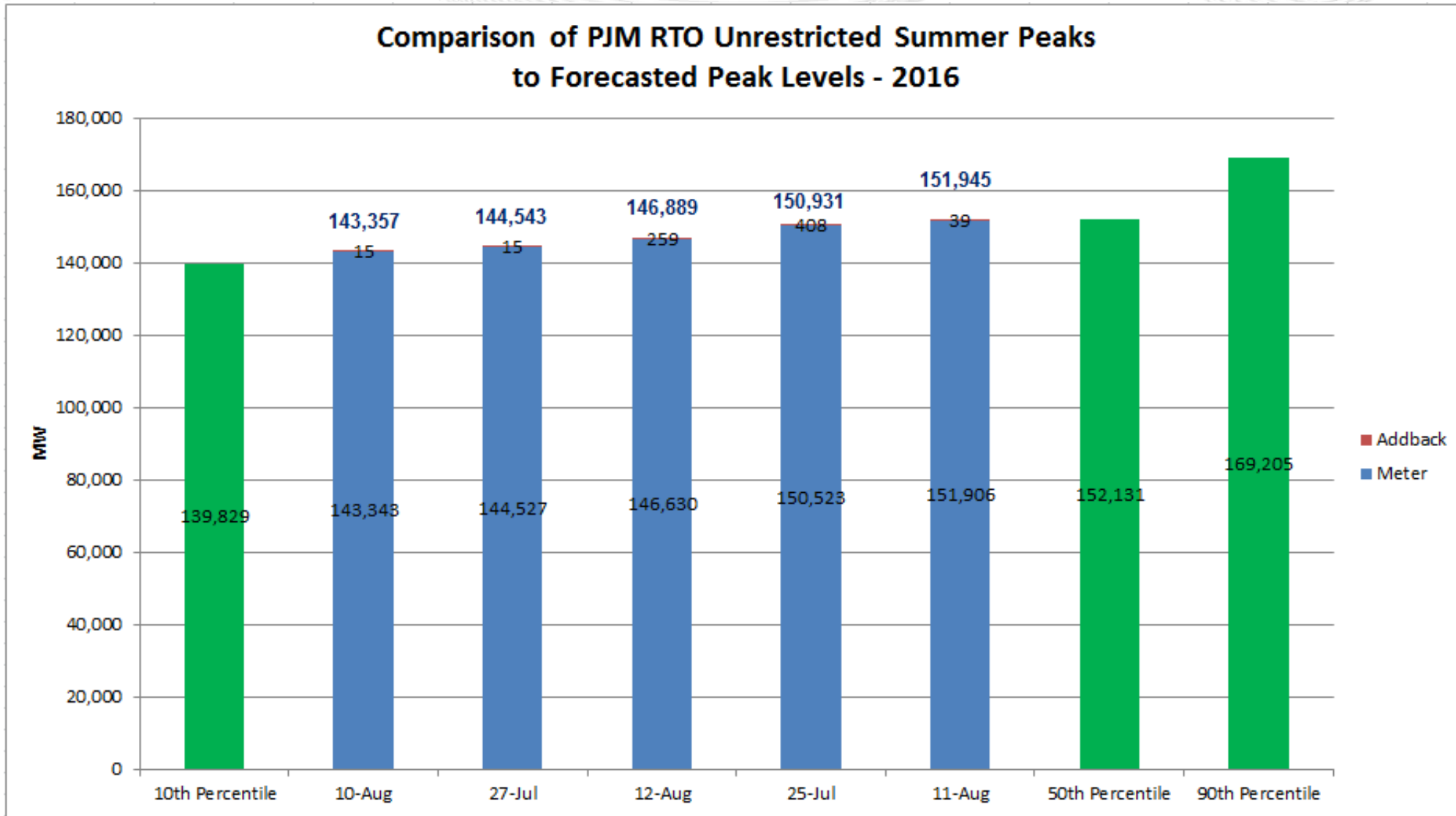
# A Review of PJM RTO Summer 2016 Loads

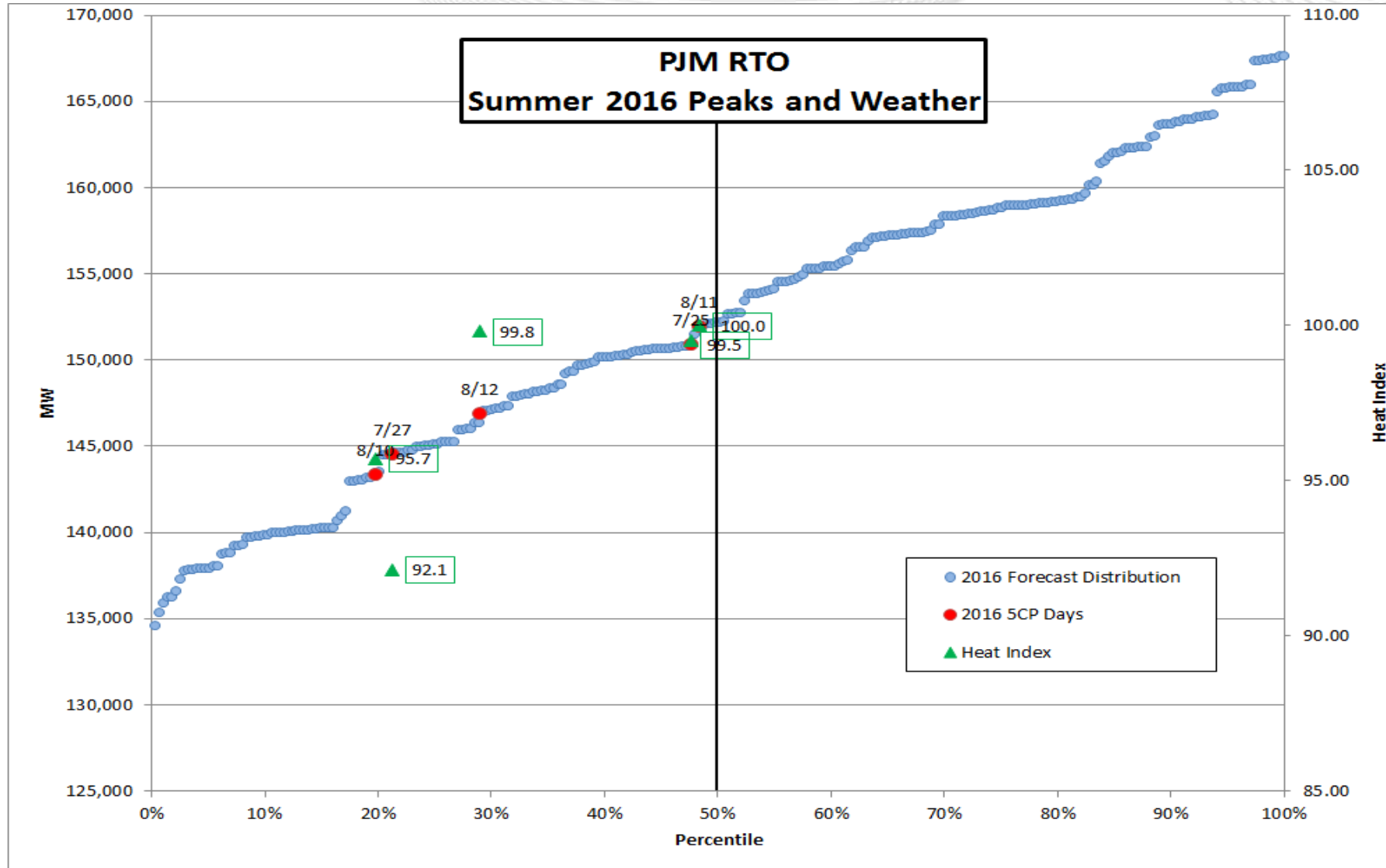
Load Analysis Subcommittee  
October 19, 2016

# Summer 2016 Peak Forecast Distribution











# Weather Conditions: 2016 and 2015 Peak Days

## Heat Index Comparison

	August 11, 2016	July 28, 2015	Difference
AE	101.5	94.6	6.9
AEP	96.4	92.6	3.8
APS	95.8	92.8	3.0
ATSI	97.2	90.0	7.2
BGE	103.4	93.2	10.2
COMED	100.8	94.6	6.2
DAYTON	98.0	93.1	5.0
DPL	101.8	93.4	8.4
DQE	95.1	91.5	3.6
DUKE	99.1	98.1	1.1
EKPC	96.5	97.0	-0.4
JCPL	103.5	93.3	10.3
METED	103.4	93.2	10.2
PECO	102.9	94.6	8.3
PENLC	97.1	89.2	7.9
PEPCO	105.6	102.5	3.0
PL	100.3	91.6	8.7
PS	104.2	93.4	10.9
RECO	104.2	93.4	10.9
UGI	100.3	89.7	10.6
VEPCO	100.6	91.0	9.6
RTO**	100.0	93.3	6.8

\*\* Values represent heat index. The RTO heat index is for reference only and is estimated from weighted zonal contributions to the Summer RTO 2016 WN peak.

## PJM RTO MAXIMUM HEAT INDEX

Parameters for Normal Distribution		
Parameter	Symbol	Estimate
Mean	Mu	100.1109
Std Dev	Sigma	5.289652

Quantiles for Normal Distribution		
Percent	Quantile	
	Observed	Estimated
1.0	91.8734	87.8053
5.0	93.1954	91.4102
10.0	93.2811	93.3319
25.0	95.6491	96.5431
50.0	99.9358	100.1109
75.0	102.9853	103.6787
90.0	105.1668	106.8899
95.0	108.2297	108.8116
99.0	113.9757	112.4165

Aug 11 2016:  
100.0 HI



