



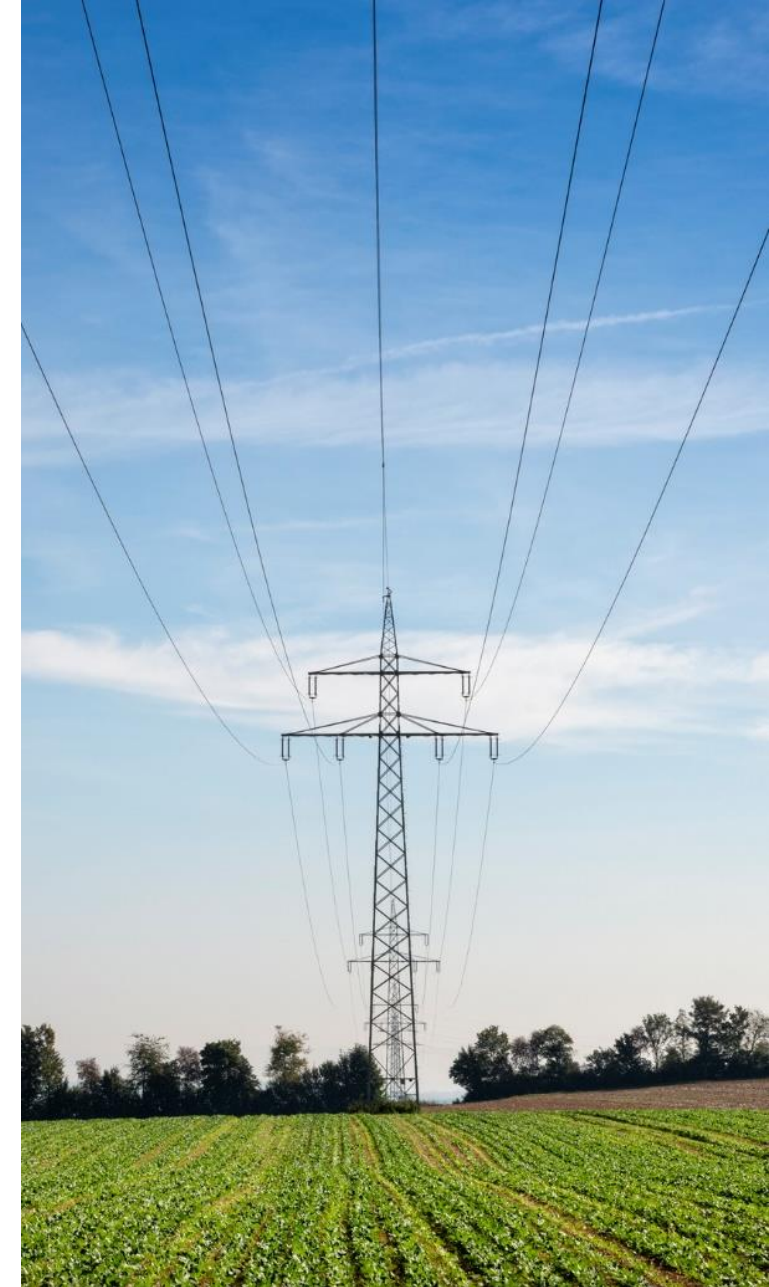
# SPP PLANNING INITIATIVES

ISAC MAY 22, 2023

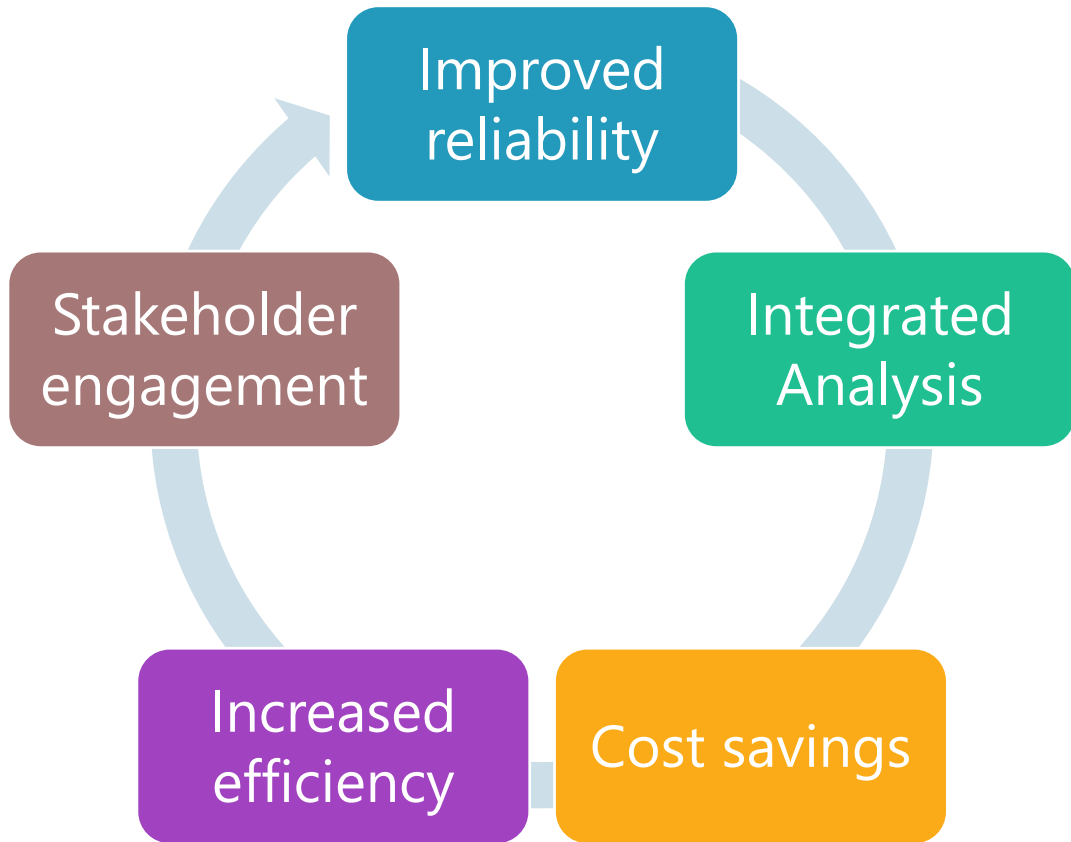


# PURPOSE

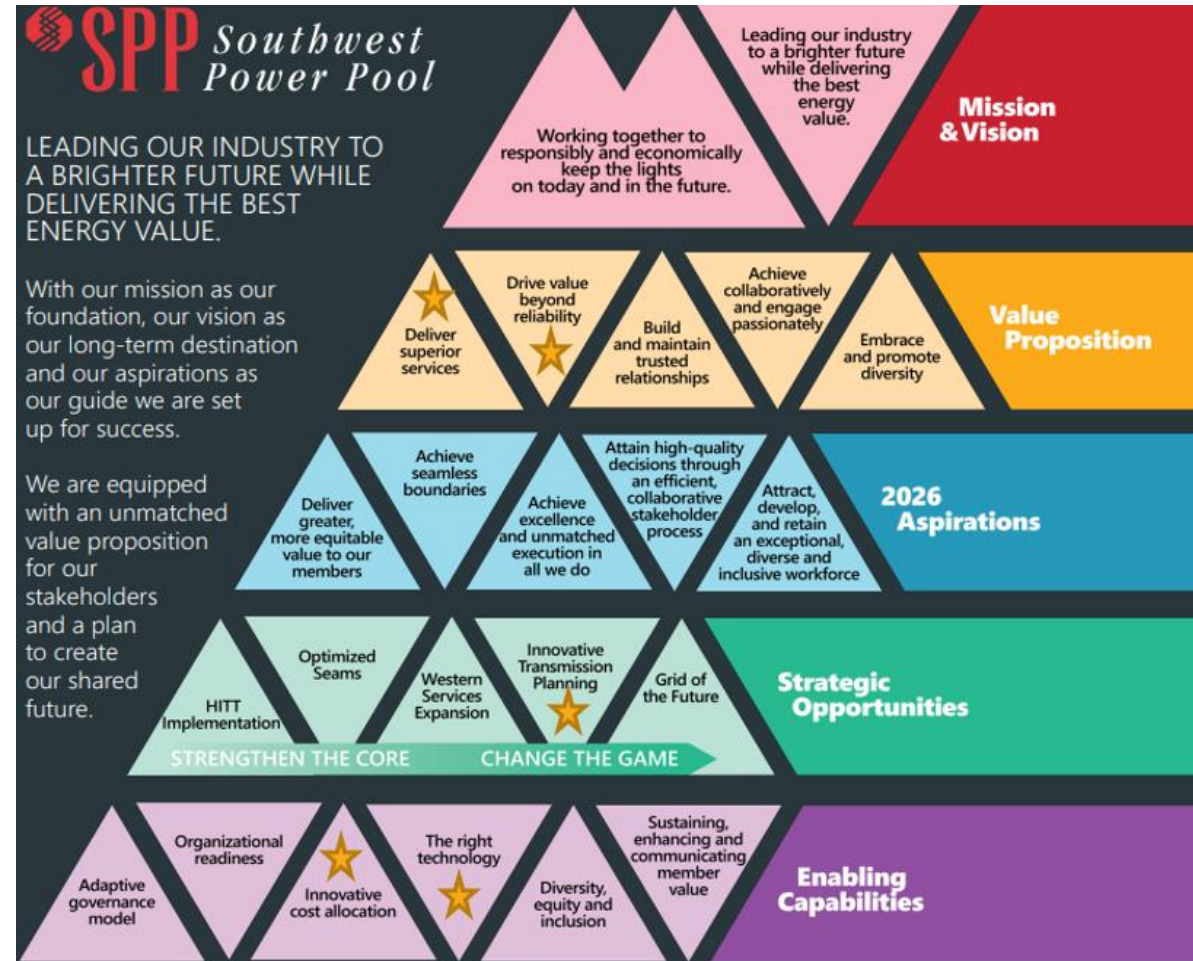
- Review:
  - Initiative objectives, purpose, value addition, and timelines
- **Consolidated Planning Process (CPP):**
  - Draft process flow
  - Draft cost allocation considerations



# OBJECTIVES FOR SCRIPT/CPPTF EFFORTS



## SPP Corporate Strategic Plan



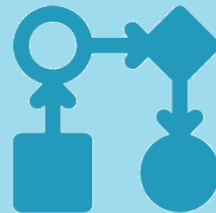
SCRIPT: Strategic and Creative Re-engineering of Integrated Planning Team  
 CPPTF: Consolidated Planning Process Task Force

# ANTICIPATED VALUE OF SCRIPT & CPPTF EFFORTS

**Reduce Queues & Improve Services**



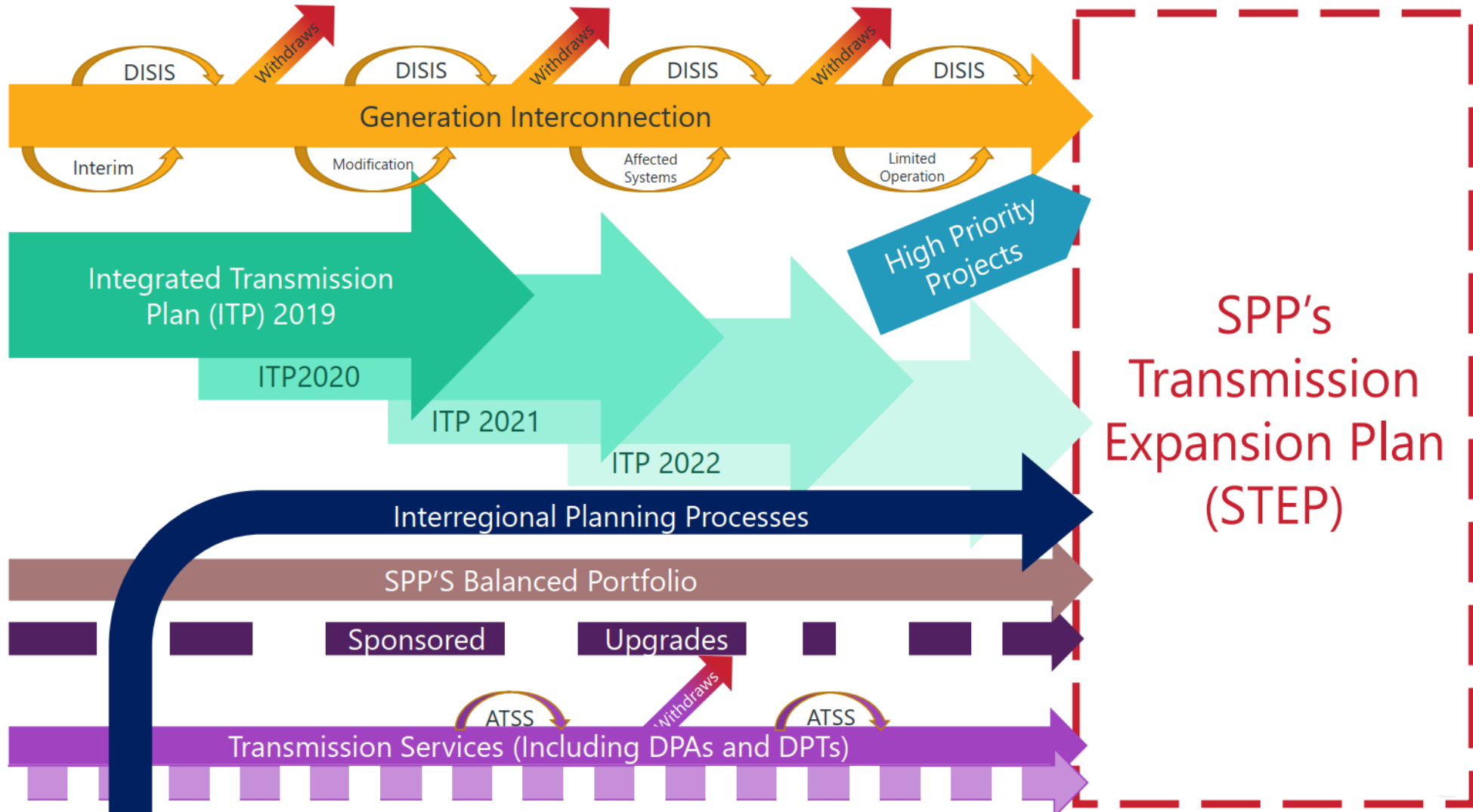
**Streamlined & Optimized Planning**



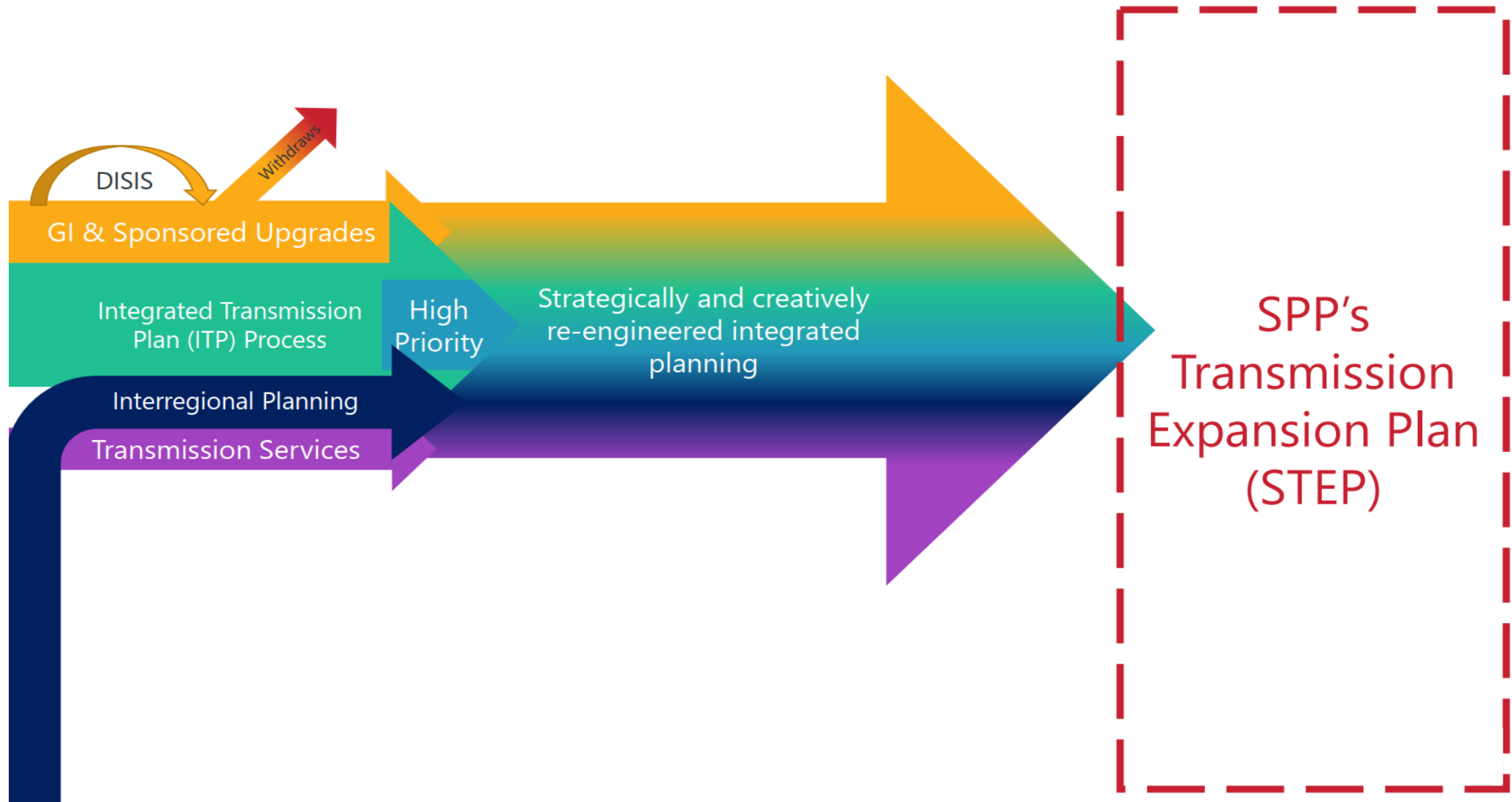
**Improved Cost-Sharing**



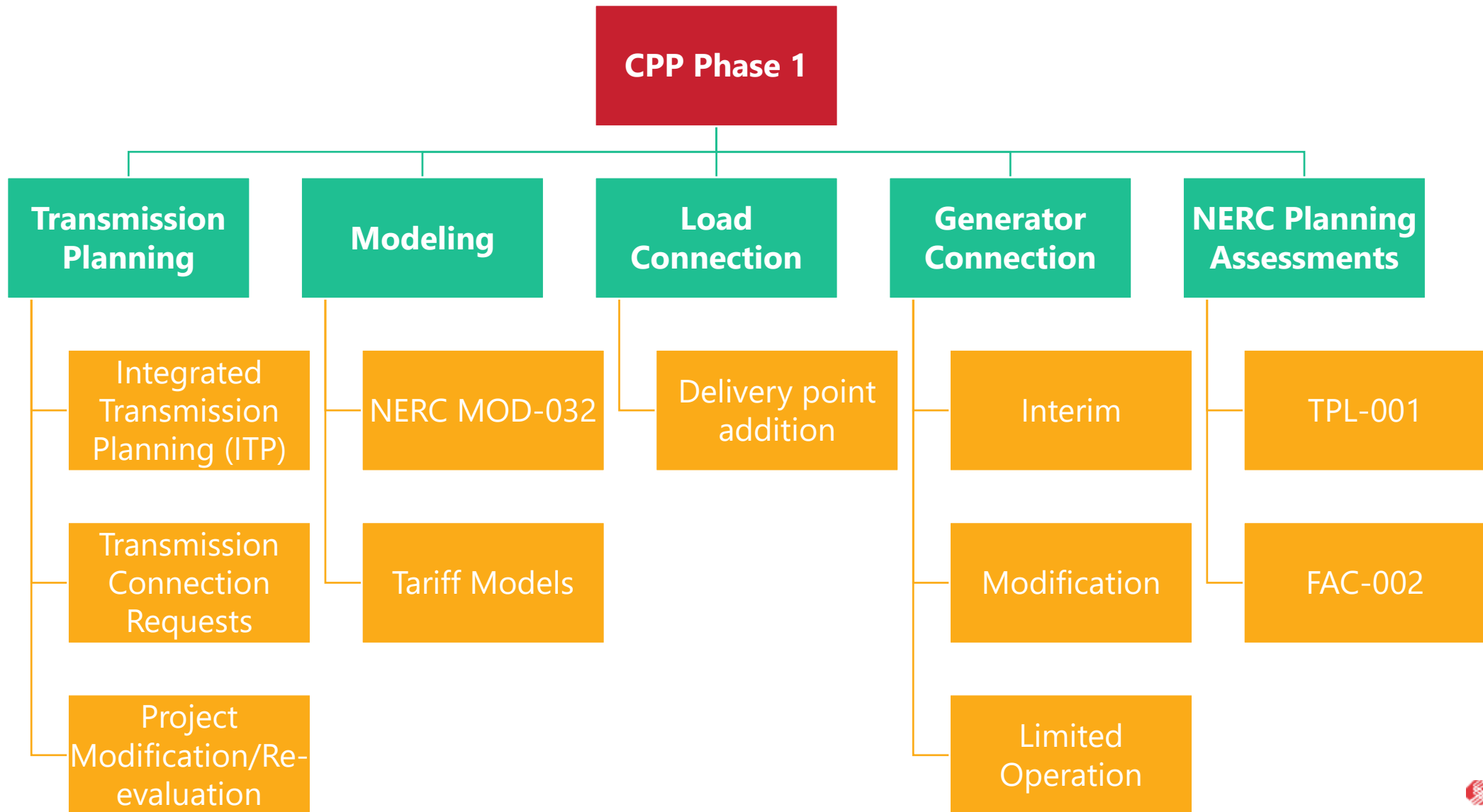
# CURRENT PLANNING PROCESS



# PROPOSED PLANNING PROCESS



# WHAT STUDY TYPES WILL BE IN CPP PHASE 1?



# DRAFT CPP PROCESS CYCLE

## CPP Cycle

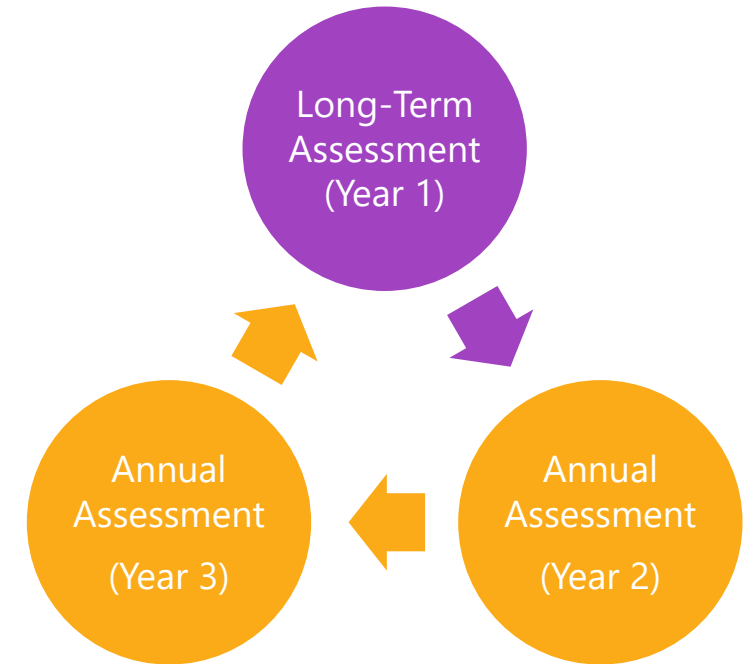
- Defined multi-year plan for up to three annual studies

## Annual assessment

- 10 year horizon assessment (e.g. 2023 ITP)
- Built to include CPP Phase 1 study-type inclusions
- Ability to refine futures and scenario assumption

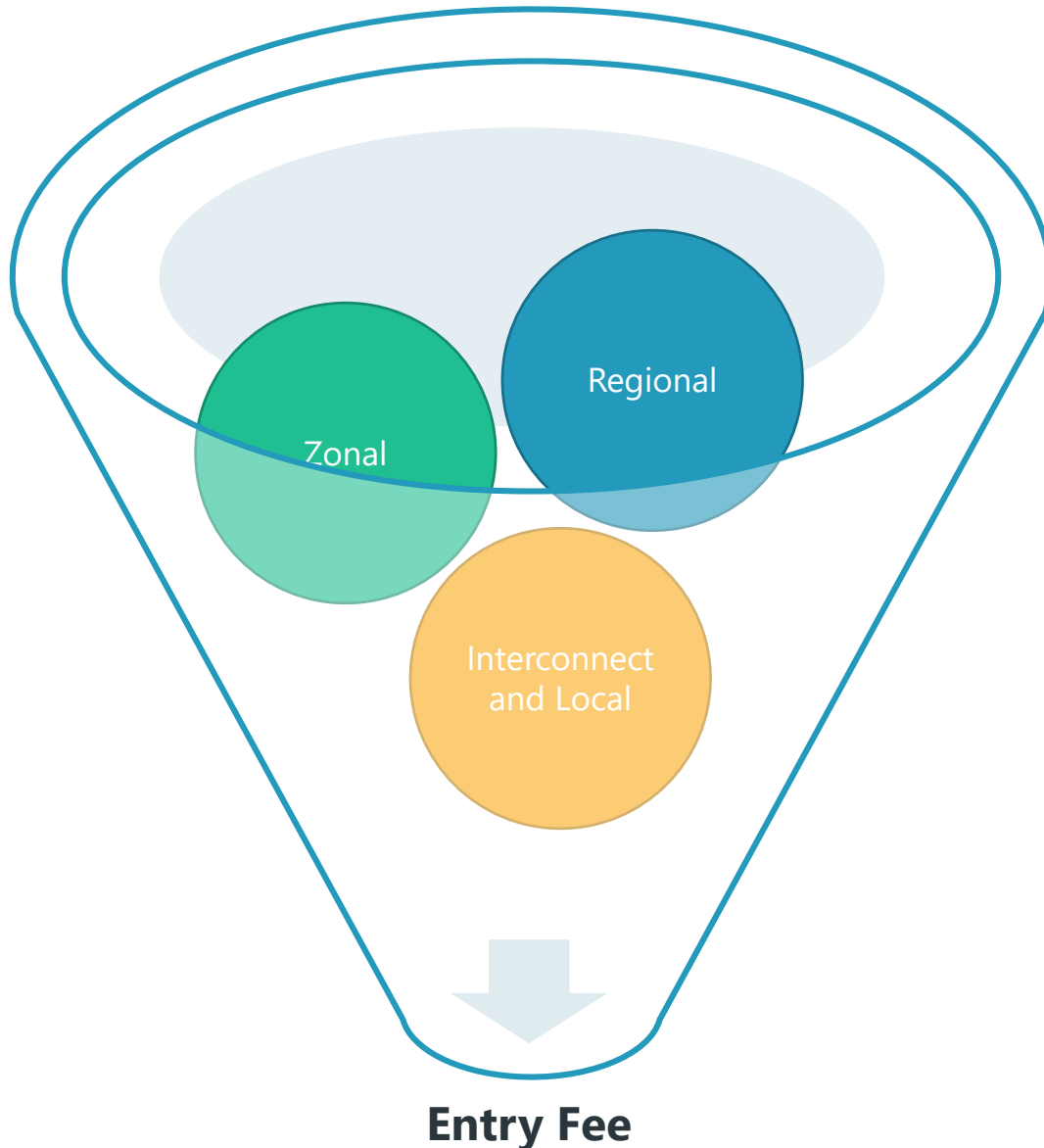
## Long-term assessment

- Up to a 20 year horizon assessment
- Includes long-term assessment scope for 10 year horizon
- Provides infrastructure vision and opportunity for commitment across three long-term assessments within the CPP Cycle
- Robust regional planning futures and scenario assumptions for CPP cycle (up to three studies)





# WHAT MIGHT GO INTO THE ENTRY FEE?



## Regional

- \$/MW commitment to aggregation of regional planning upgrades
- System upgrades potentially identified in longer range (15 or 20 year) planning assessment

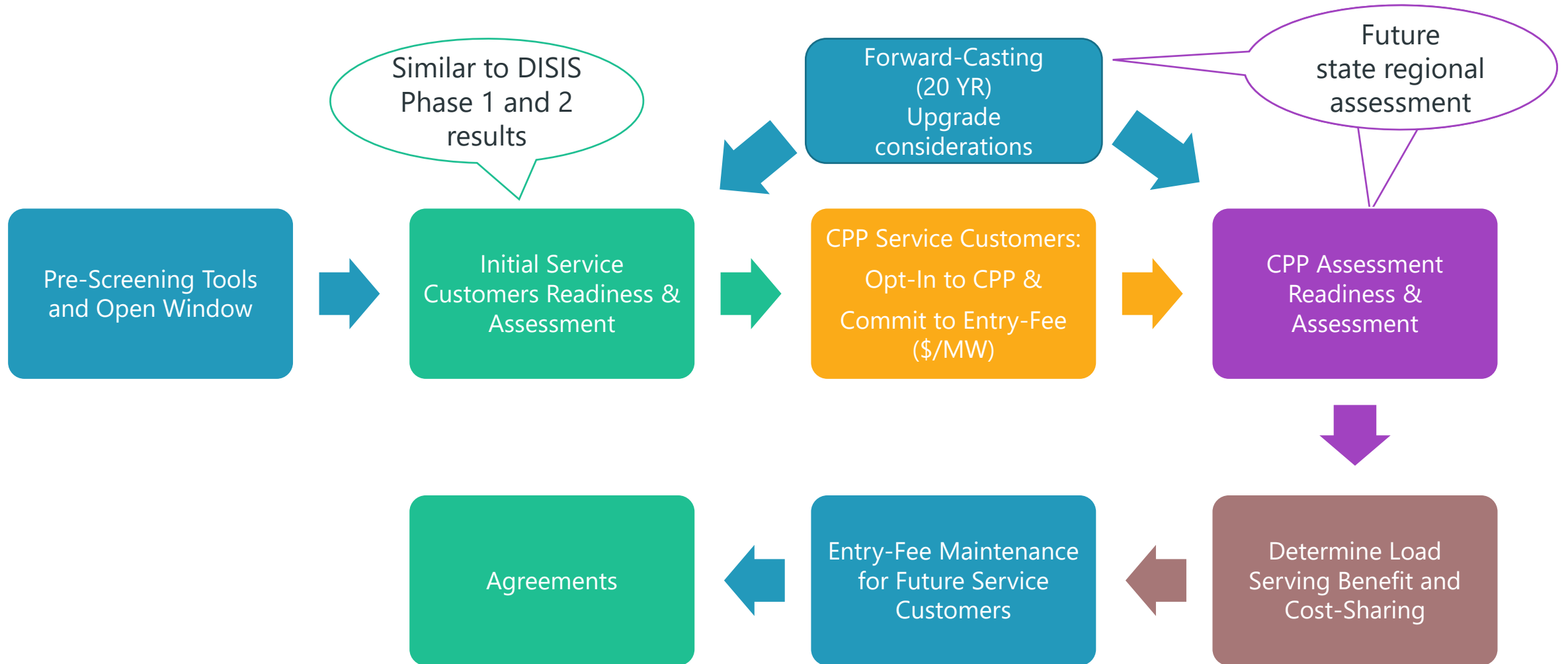
## Zonal

- \$/MW commitment for upgrades required beyond regional upgrades for specific service customer needs of the sub-regional location
- Potentially identified in annual initial assessment

## Interconnect and Local

- Direct assignment cost of specific network or transmission owner facilities upgrades at the Point of Interconnection
- Potentially identified in initial assessment

# DRAFT CPP PROCESS FLOW



# ANTICIPATED POLICY TIMELINE

