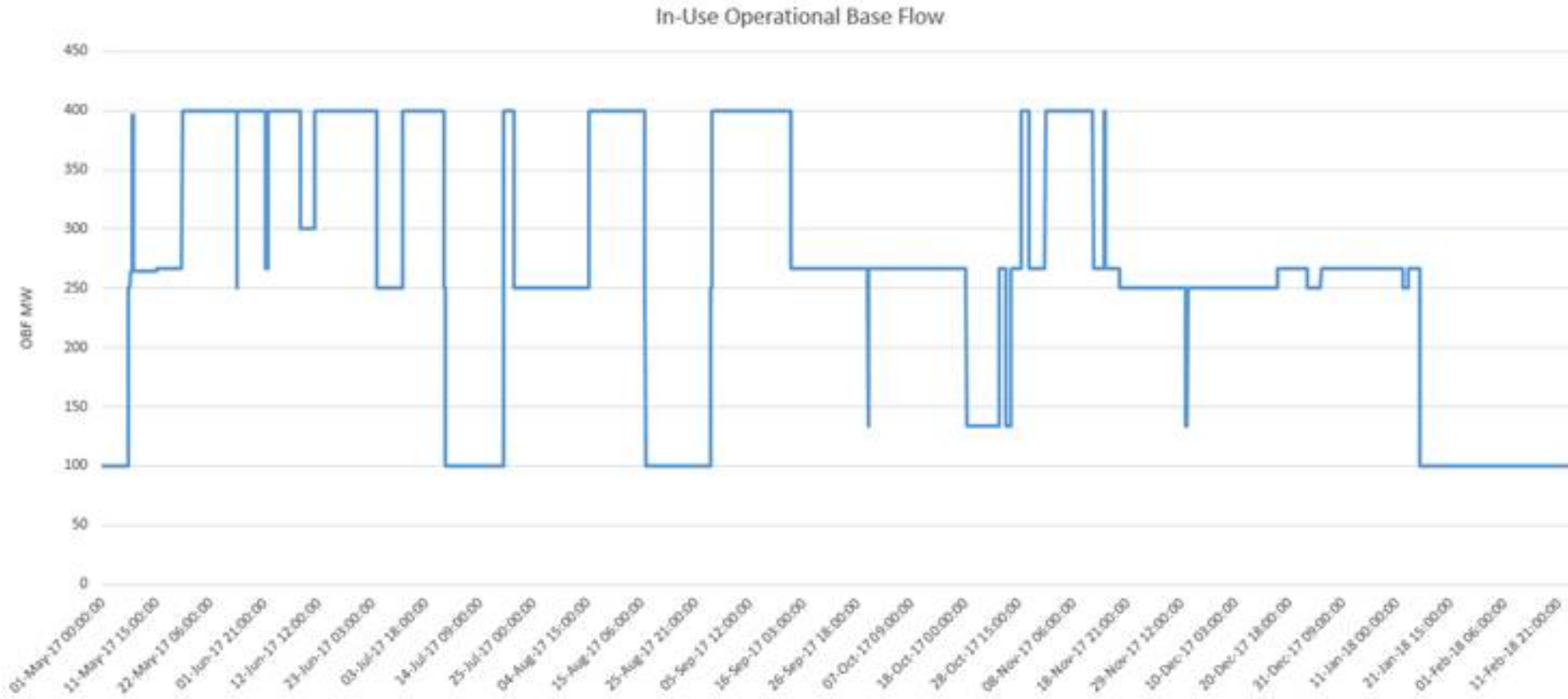




NY-NJ PAR Coordination Metrics

Nikki Militello
Joint PJM/NYISO Meeting
April 2, 2018

- PJM & NYISO implemented modifications to the Joint Operating Agreement (JOA) to address the NY-NJ PAR Coordination after the expiration of the PSCONED Wheel Agreement on May 1st, 2017.
- PAR Coordinated Flowgates
 - 69 NYISO Owned
 - 65 PJM Owned
- The following presentation will review various metrics since the implementation of the NY-NJ PAR Coordination Protocol.



Note: The in-use OBF between the ABC and JK Interfaces were balanced since the NY-NJ PAR Coordination was put into place on 5.1.2017



Congested Hours

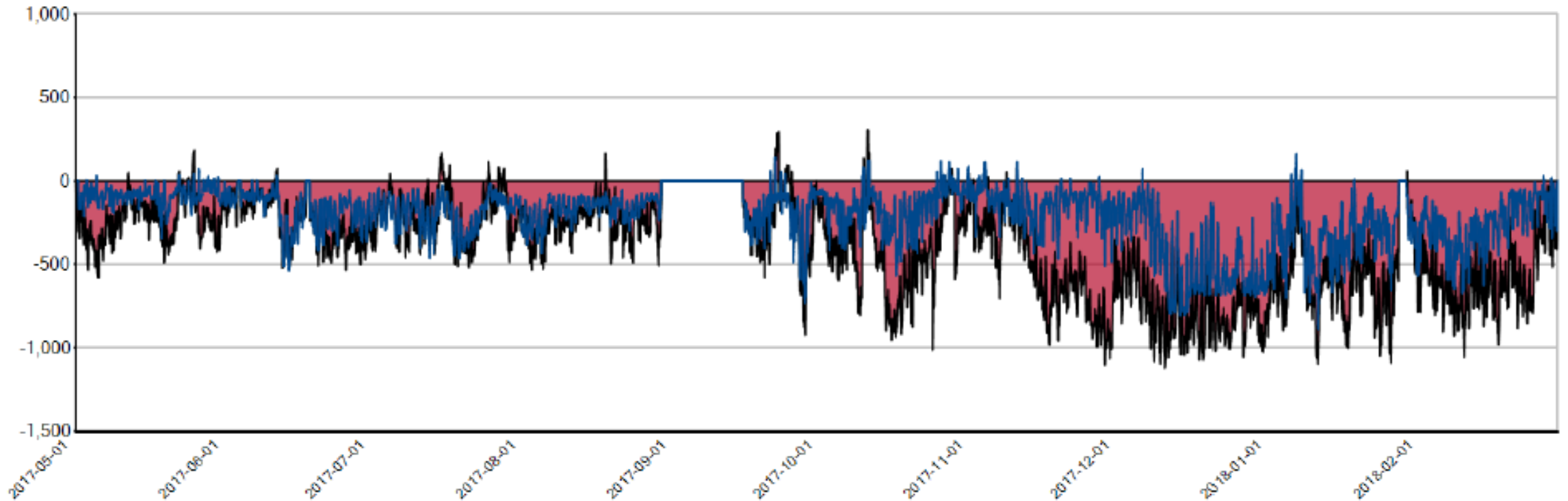


Interface	Congested Hours PJM	Congested '+' Hours PJM	Congested '-' Hours PJM	Congested Hours NYISO	Congested '+' Hours NYISO	Congested '-' Hours NYISO
5018	194	5	189	2,750	299	2,451
ABC	195	1	194	3,150	393	2,757
JK	195	1	194	2,915	335	2,580

Note: A negative cost of congestion indicates taps in the direction of the relevant participating RTO would alleviate that RTO's congestion.

5018 Performance

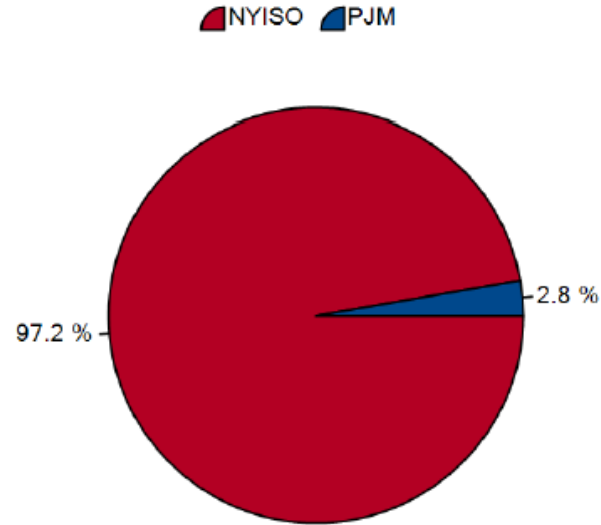
Actual_Flow Target_Flow



Note: 80% of the RECO Load is delivered via the 5018 Interface.

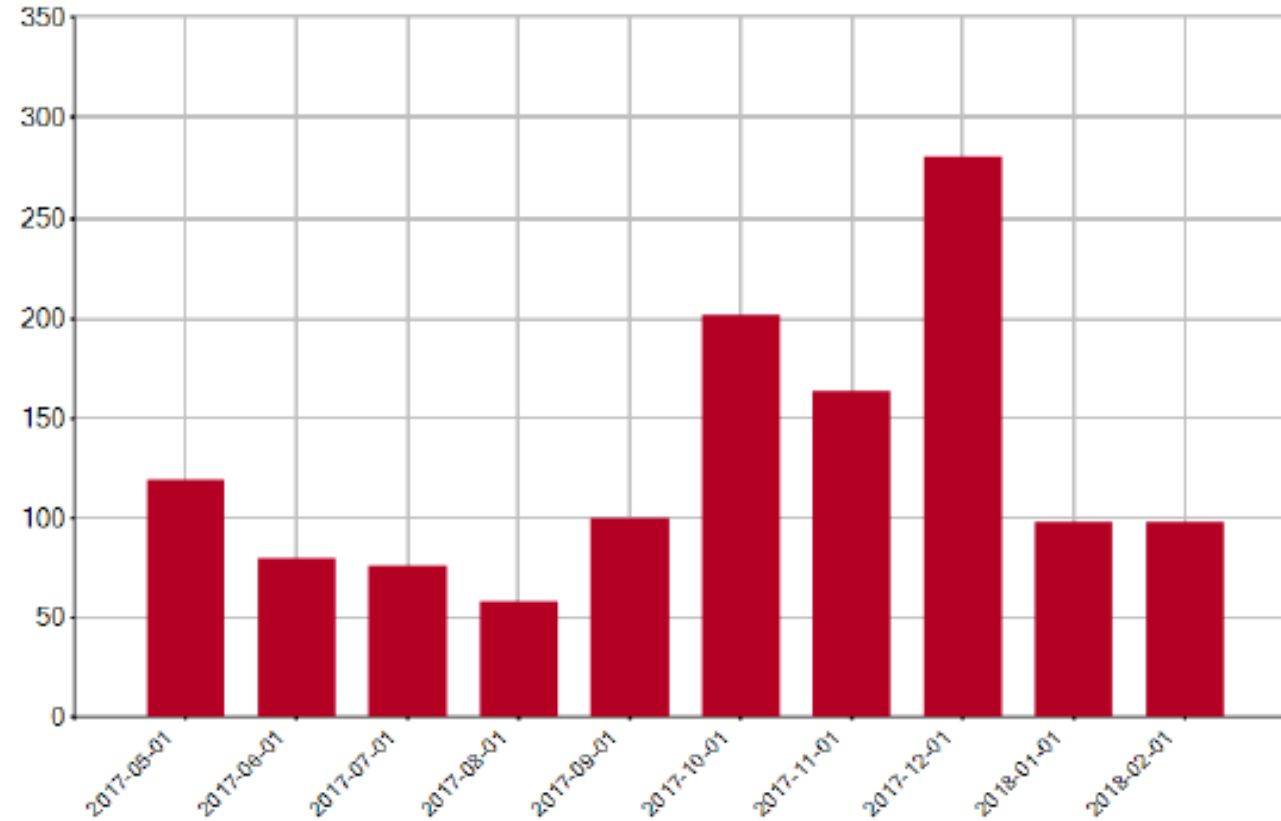
Flow Direction - 5018

5018 Flow Direction (% of time)



Flow into PJM (Hours)	Flow into PJM (MWh)	Flow into NYISO (Hours)	Flow into NYISO (MWh)
188	13,882	6,646	2,814,443

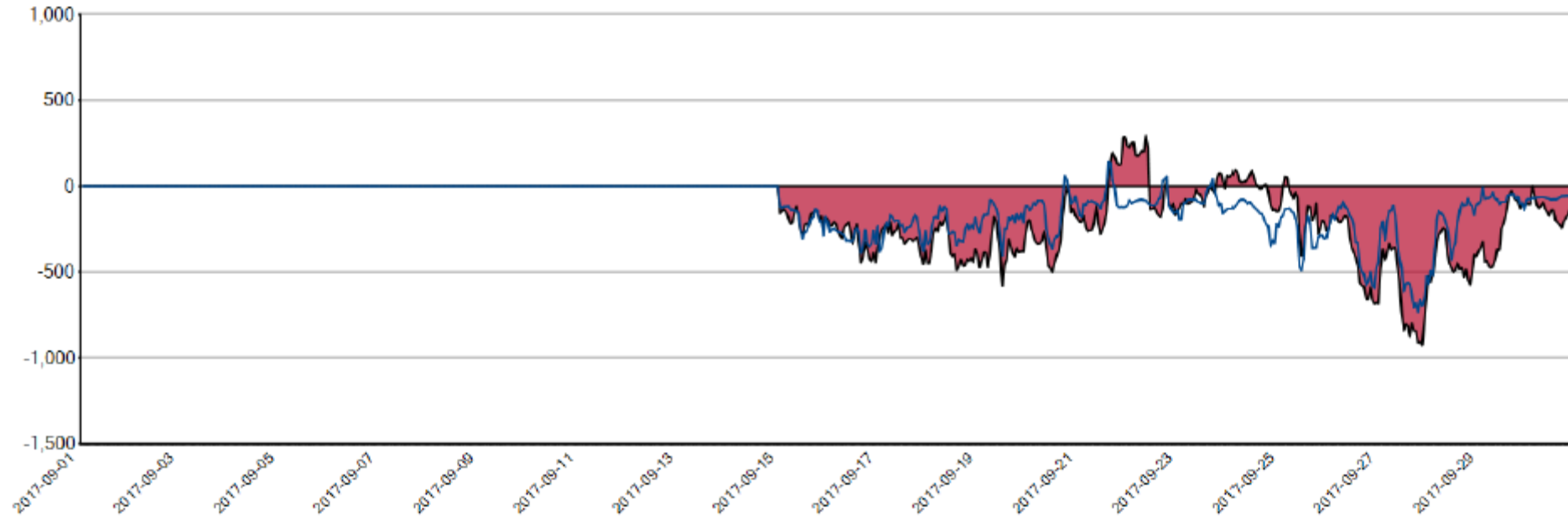
5018 Tap Moves



Note: The tap counts are representative of each PAR taking a tap independently.

2017-09-01 5018 Performance

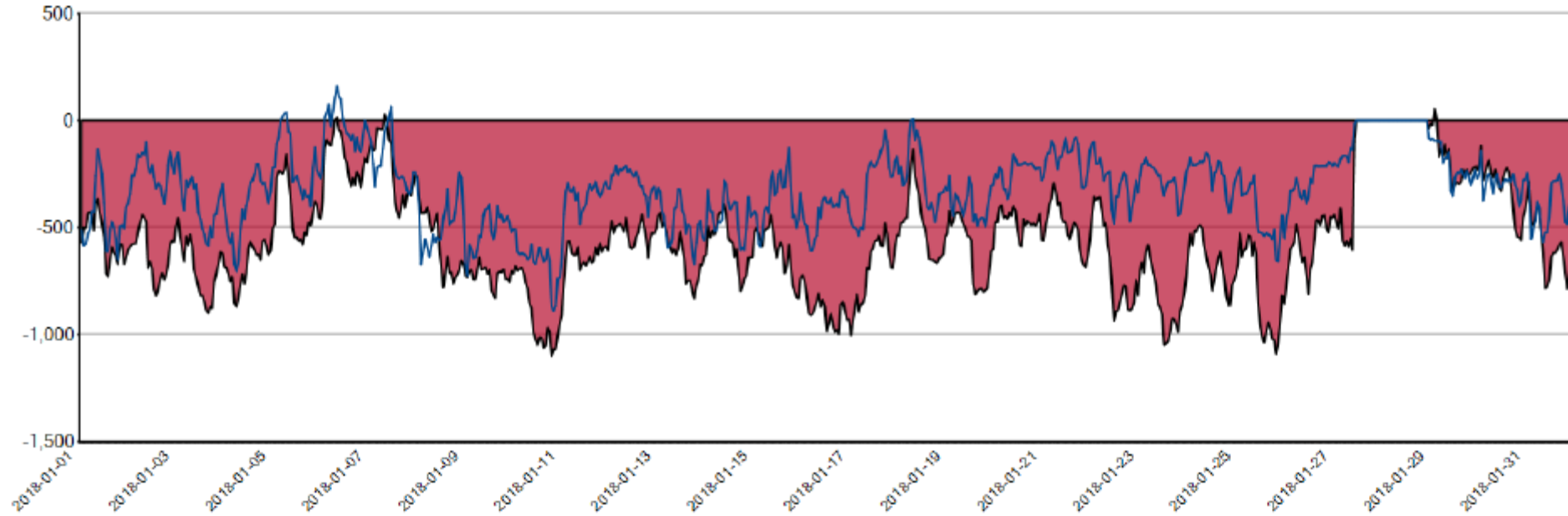
Actual_Flow Target_Flow



Interface	Congested Hours PJM	Congested '+' Hours PJM	Congested '-' Hours PJM	Congested Hours NYISO	Congested '+' Hours NYISO	Congested '-' Hours NYISO
5018	0	0	0	83	15	68

2018-01-01 5018 Performance

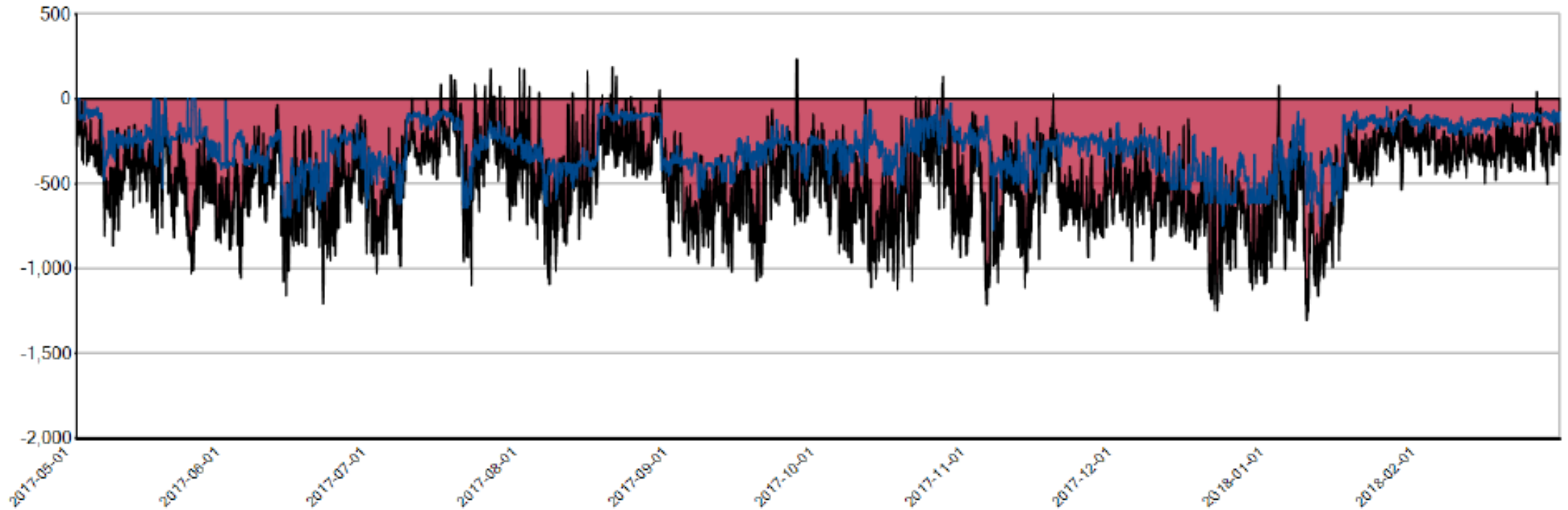
Actual_Flow Target_Flow



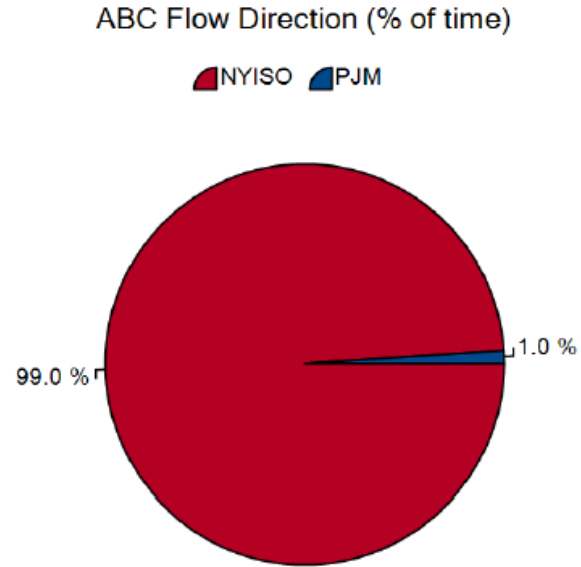
Interface	Congested Hours PJM	Congested '+' Hours PJM	Congested '-' Hours PJM	Congested Hours NYISO	Congested '+' Hours NYISO	Congested '-' Hours NYISO
5018	45	5	40	374	10	364

ABC Performance

Actual_Flow Target_Flow

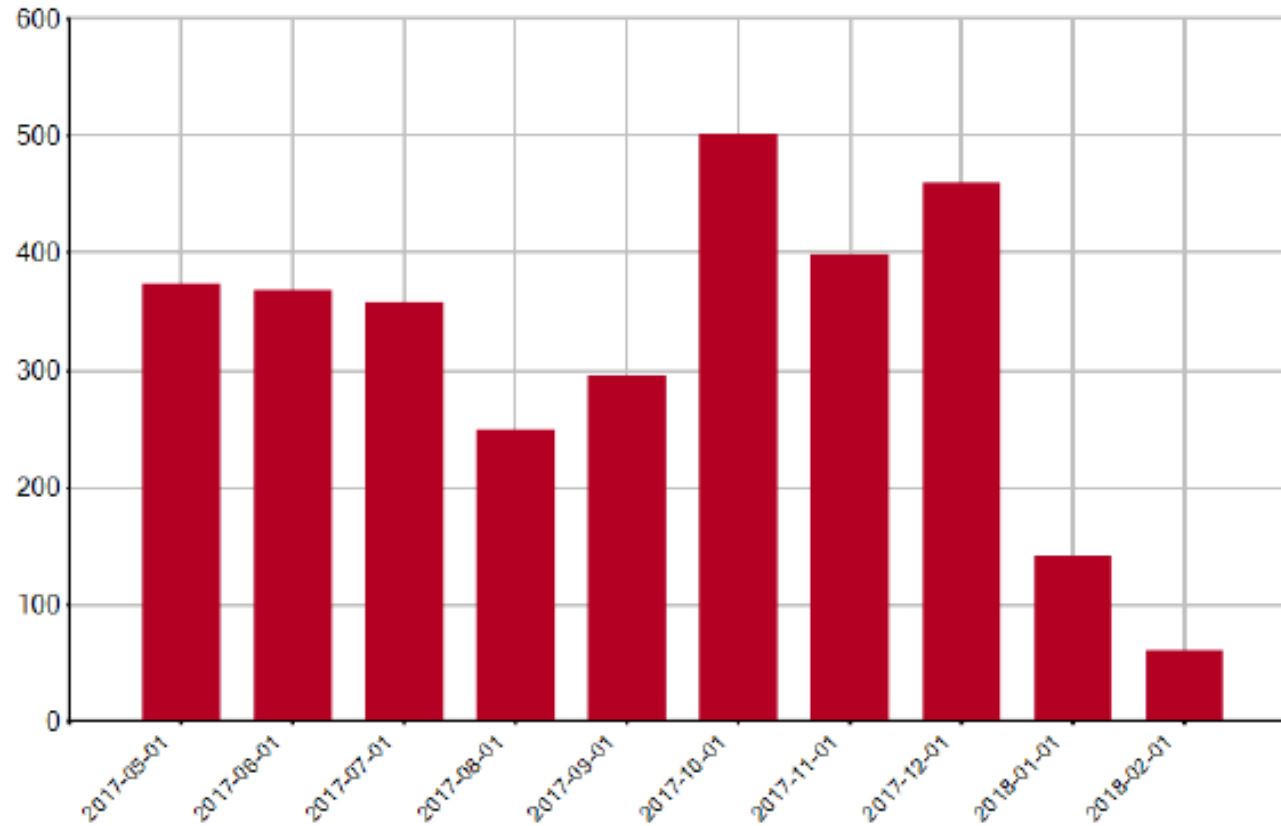


Flow Direction - ABC



Flow into PJM (Hours)	Flow into PJM (MWh)	Flow into NYISO (Hours)	Flow into NYISO (MWh)
76	4,612	7,221	3,533,297

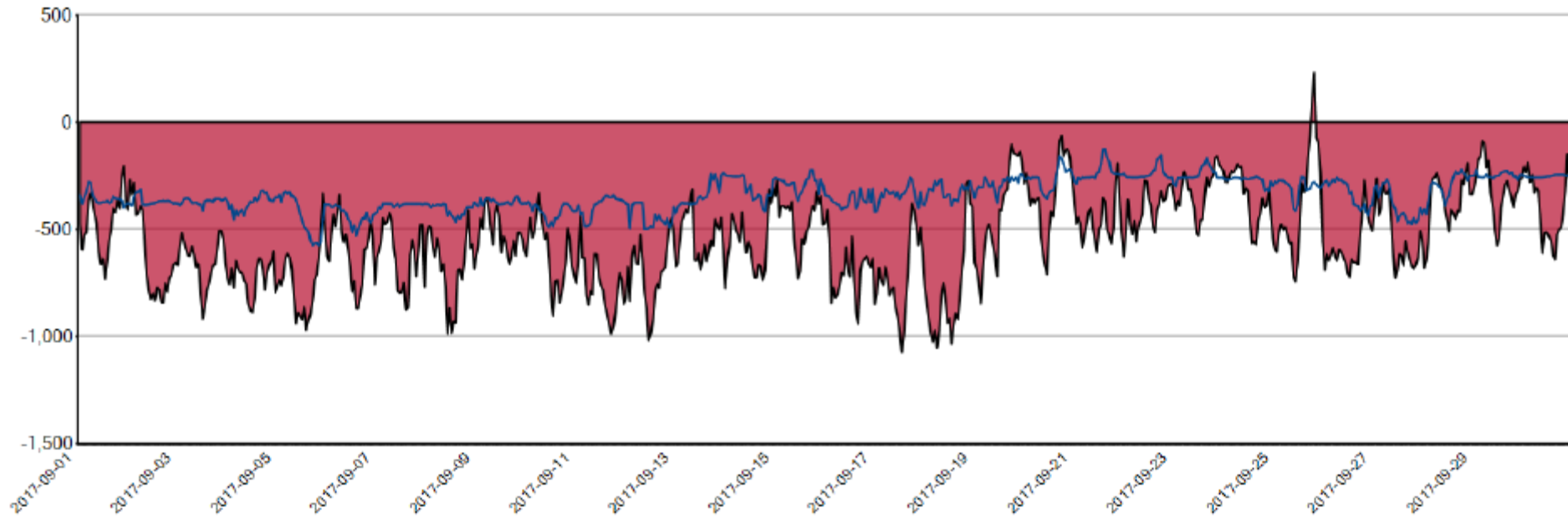
ABC Tap Moves



Note: Prior to September 2017, there may be some erroneous values on the A PAR Tap due to telemetry noise.

2017-09-01 ABC Performance

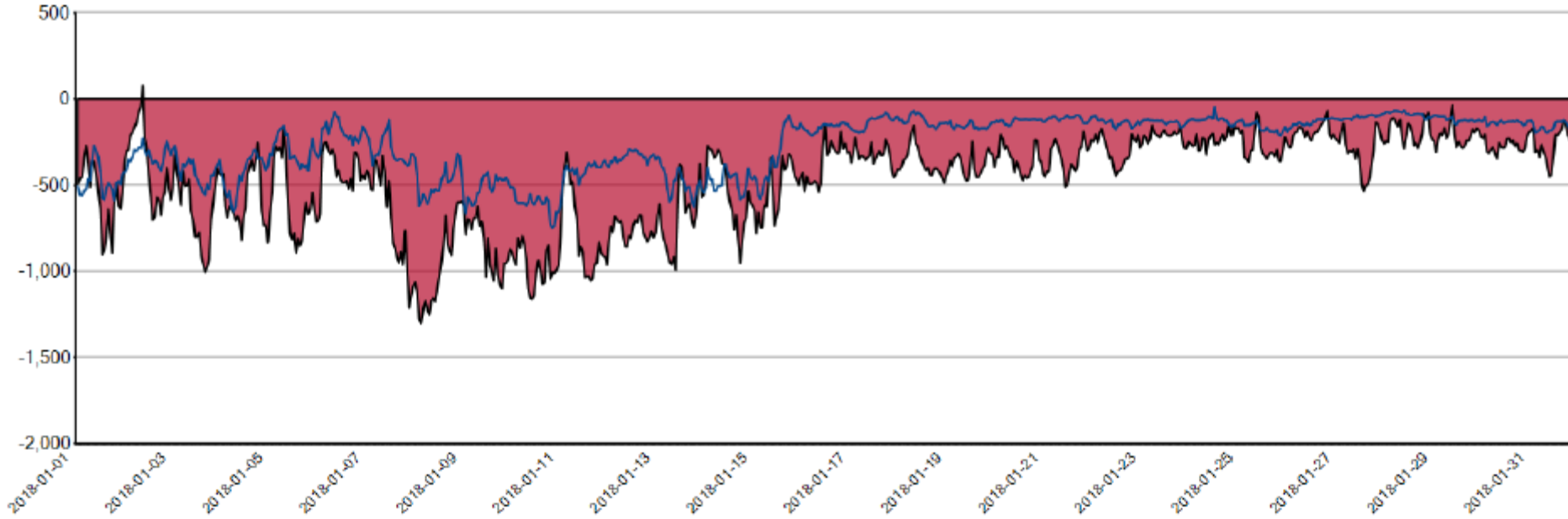
Actual_Flow Target_Flow



Interface	Congested Hours PJM	Congested '+' Hours PJM	Congested '-' Hours PJM	Congested Hours NYISO	Congested '+' Hours NYISO	Congested '-' Hours NYISO
ABC	0	0	0	192	32	160

2018-01-01 ABC Performance

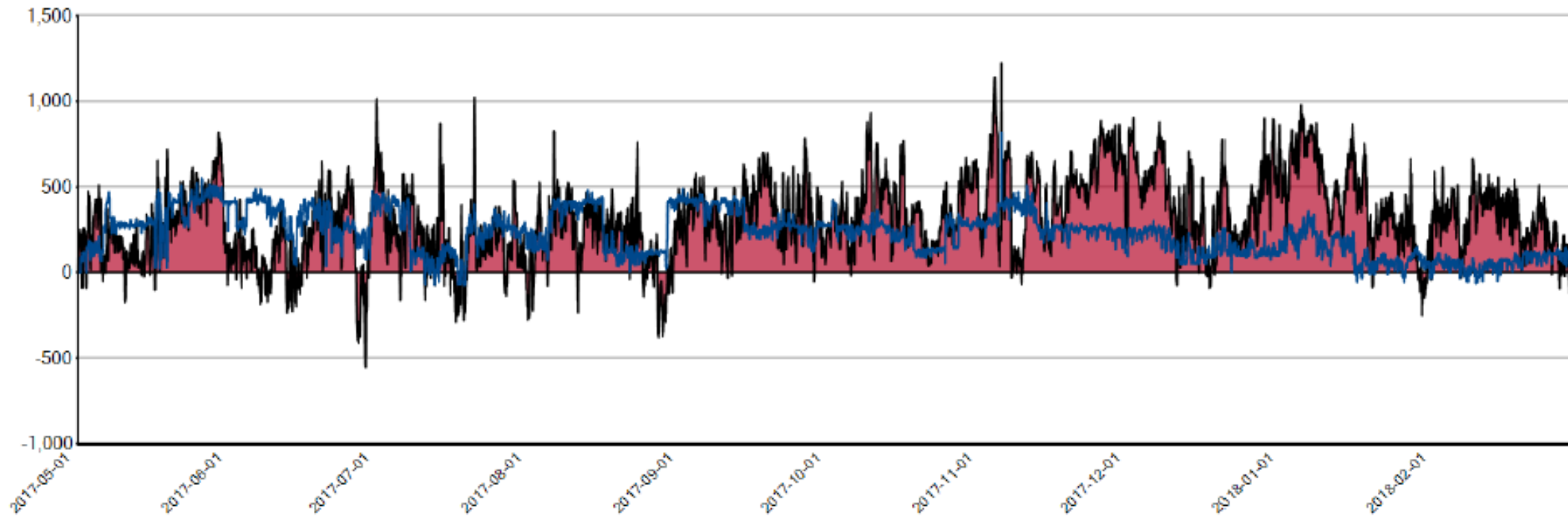
Actual_Flow Target_Flow



Interface	Congested Hours PJM	Congested '+' Hours PJM	Congested '-' Hours PJM	Congested Hours NYISO	Congested '+' Hours NYISO	Congested '-' Hours NYISO
ABC	45	0	45	419	13	406

JK Performance

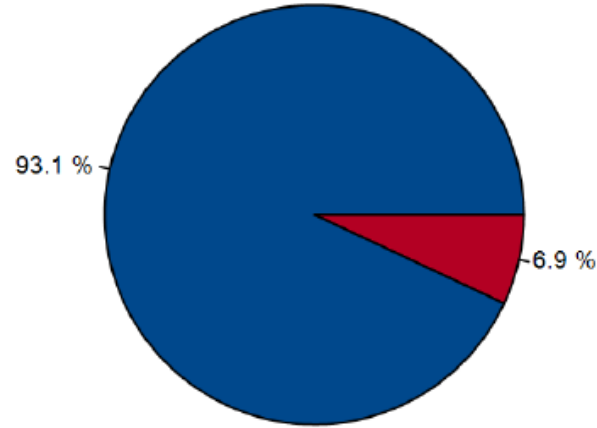
Actual_Flow Target_Flow



Flow Direction - JK

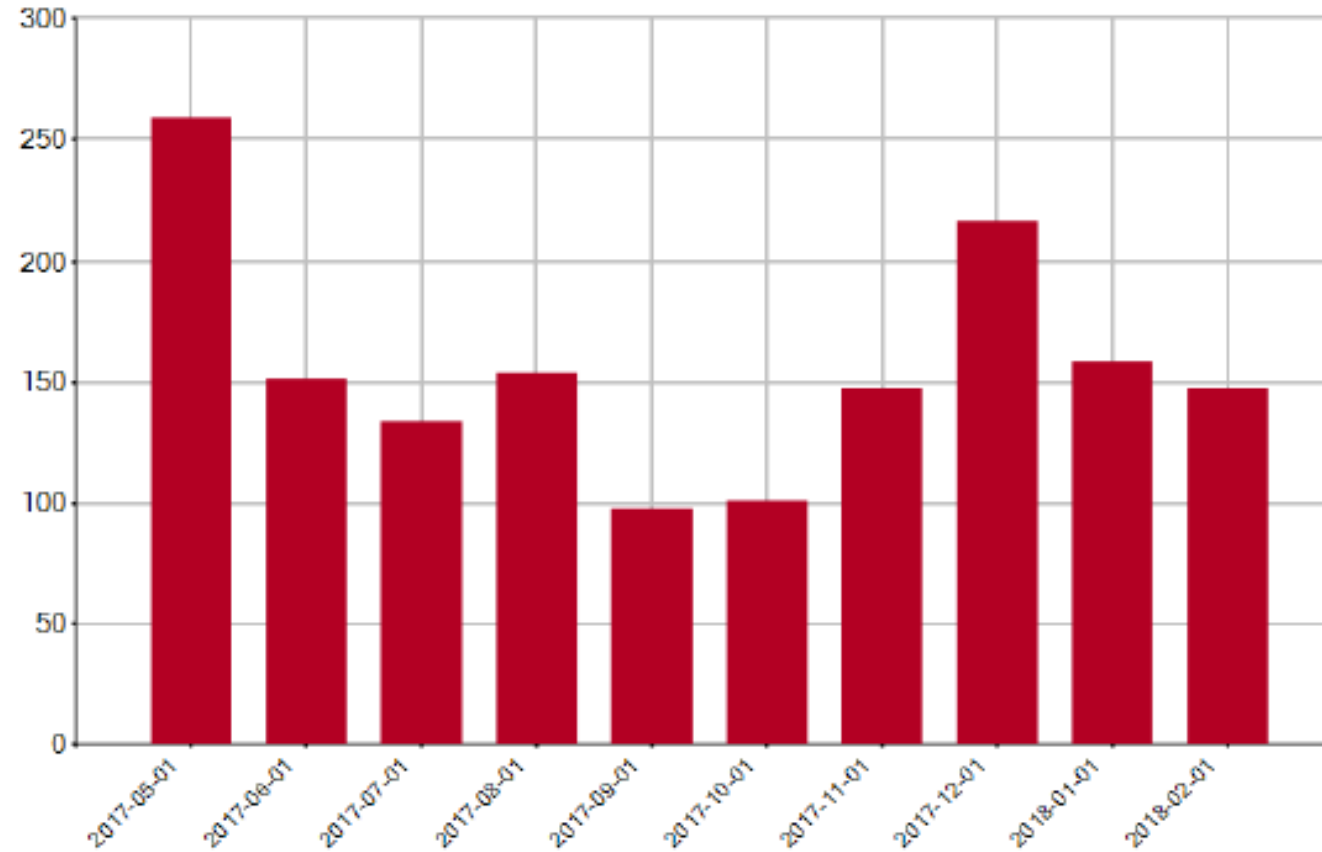
JK Flow Direction (% of time)

NYISO PJM



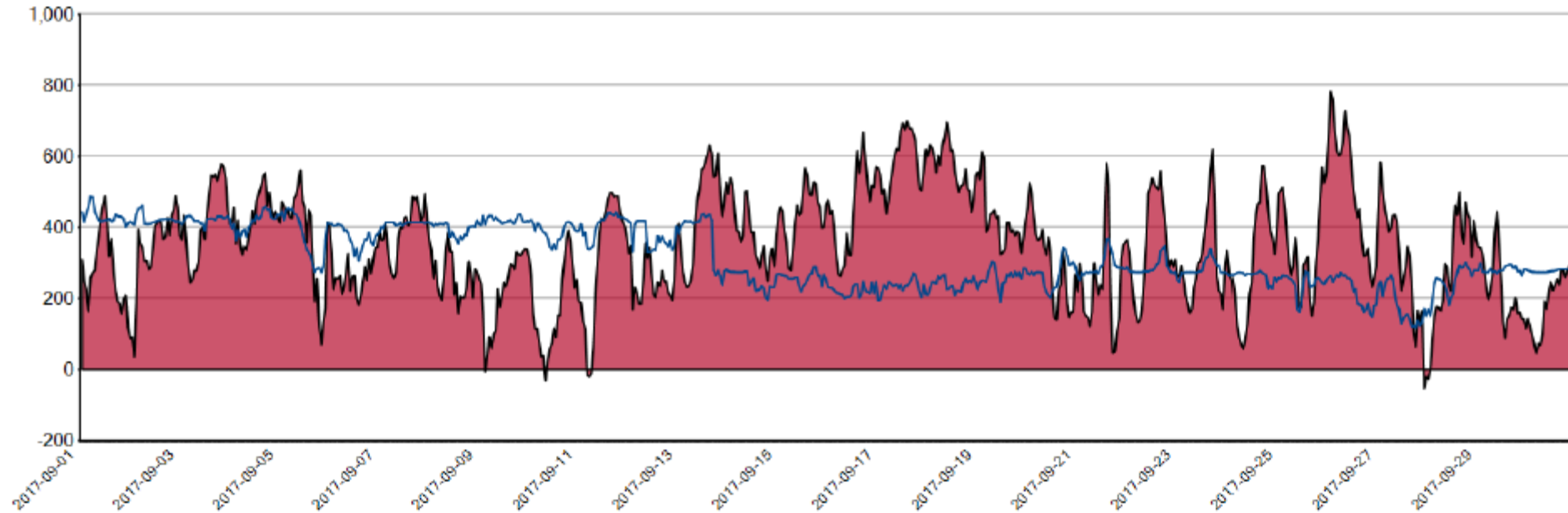
Flow into PJM (Hours)	Flow into PJM (MWh)	Flow into NYISO (Hours)	Flow into NYISO (MWh)
6,790	2,374,497	507	57,245

JK Tap Moves



2017-09-01 JK Performance

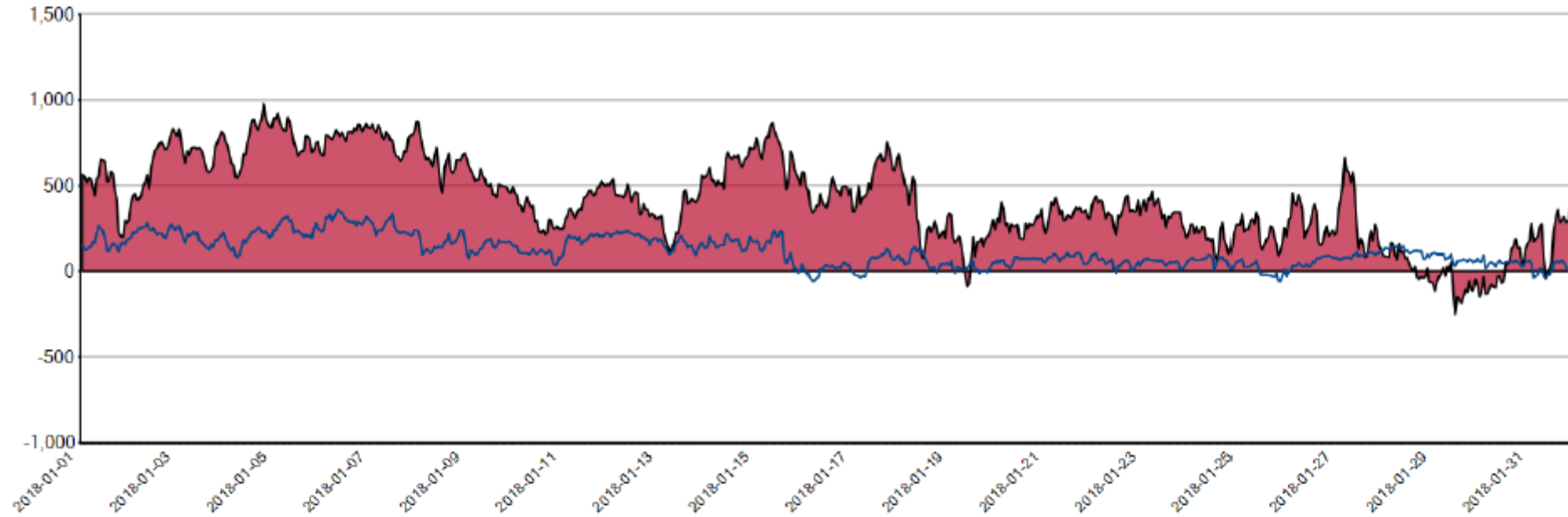
Actual_Flow Target_Flow



Interface	Congested Hours PJM	Congested '+' Hours PJM	Congested '-' Hours PJM	Congested Hours NYISO	Congested '+' Hours NYISO	Congested '-' Hours NYISO
JK	0	0	0	166	33	133

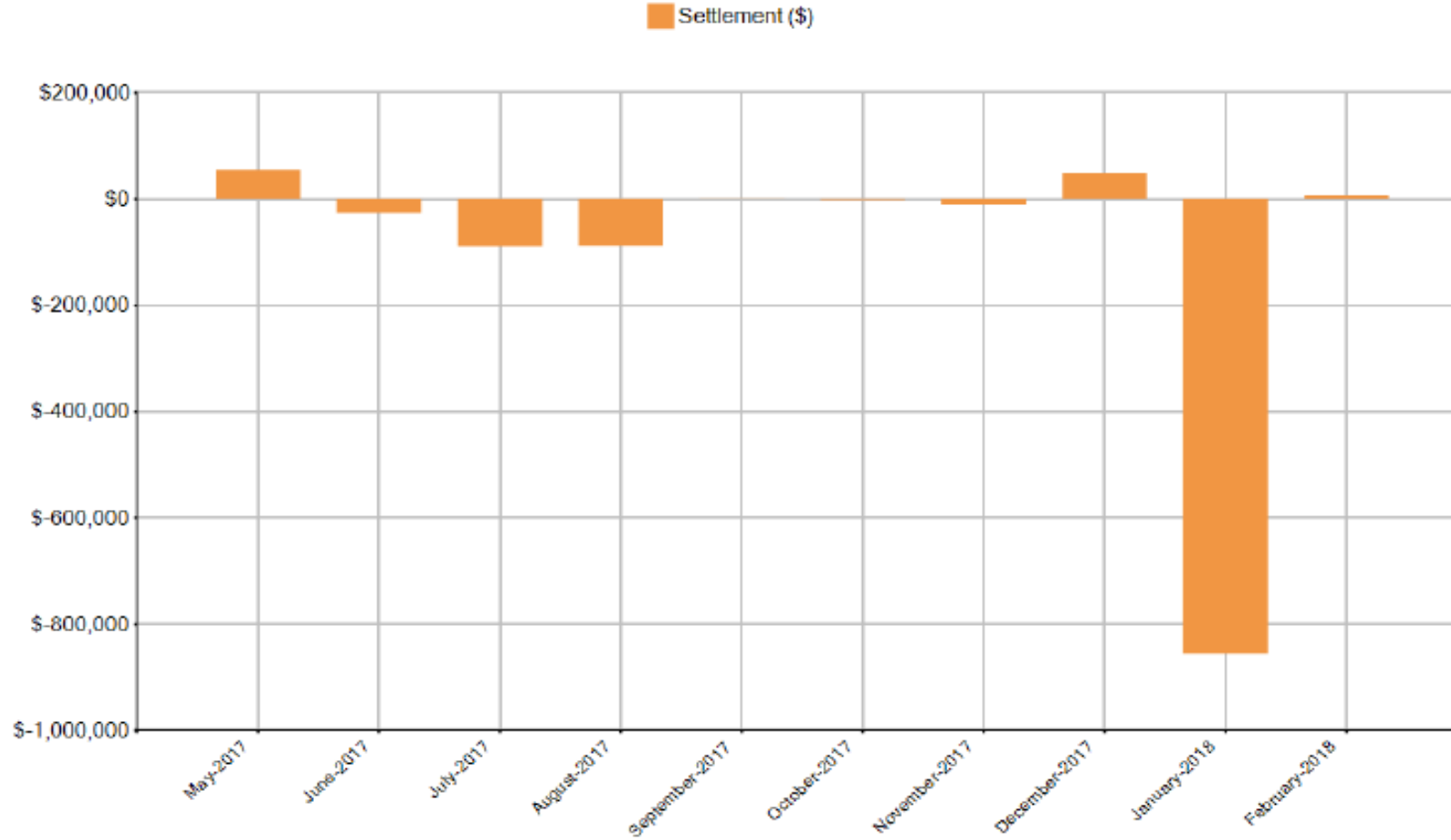
2018-01-01 JK Performance

Actual_Flow Target_Flow



Interface	Congested Hours PJM	Congested '+' Hours PJM	Congested '-' Hours PJM	Congested Hours NYISO	Congested '+' Hours NYISO	Congested '-' Hours NYISO
JK	45	0	45	412	10	402

Monthly Settlement History



Settlement Value: \$(1,008,861.17)

Note: As defined in the JOA, a payment from NYISO to PJM when the value is positive, and a payment from PJM to NYISO when the value is negative.