

Figure 2 - Root Certificate Content

- 7) To save:
 - a) In Chrome, right-click and select 'Save As'
 - b) Internet Explorer – certificate formatting issues have been occurring with IE, Chrome works best.
- 8) Save the file with the name root.pem. Make a note of the location of the file for future reference. For example, c:\windows\temp

Guide to Installing GeoTrust Certificates for Java Applications and Utilities

To import the certificate files for Java applications and utilities.

- 1) Load these files into your Java keystore. First, find where Java is installed.
 - a) If you already know where java is installed, you can ignore the next steps and skip to step 2.
 - b) On a Unix system, you can run one of these commands - “which java”, “echo \$JAVA_HOME” or “locate java”.
 - c) On a Windows system, you can run the “echo %JAVA_HOME%” command.
 - d) For either of these, make a note of the path to the Java installation.
- 2) Once you have the path to the Java installation, run the following commands to install the certificates:

```
> cd <path_to_java_from_step_1>
> cd bin
> keytool -import -alias geotrustIntermediateCA -trustcacerts -file <path_to_intermediate.pem> -keystore
<path_to_java_from_step_1>\jre\lib\security\cacerts
**** Note for unix systems you may need to execute this as ./keytool ****
```

```
> keytool -import -alias geotrustRootCA -trustcacerts -file <path_to_root.pem> -keystore
<path_to_java_from_step_1>\jre\lib\security\cacerts
```

**** Note: For both of these commands, you will be prompted to enter the keystore password: enter your configured keystore password (the default is 'changeit') ****

Note: If you see an error “already exists,” this means you already have the certificates, and can skip that step.

Guide to Installing GeoTrust Certificates for .NET Applications

To import the certificate files for .NET applications.

- 1) Click **Start**, click **Run**, type certmgr.msc, and then click **OK**.
Note: You may need administrative permissions to open certificate manager in Microsoft Management Console snap-in.
- 2) Expand **Certificates (local computer)**, expand **Trusted Root Certification Authorities** and then click **Certificates**, shown in Figure 3.

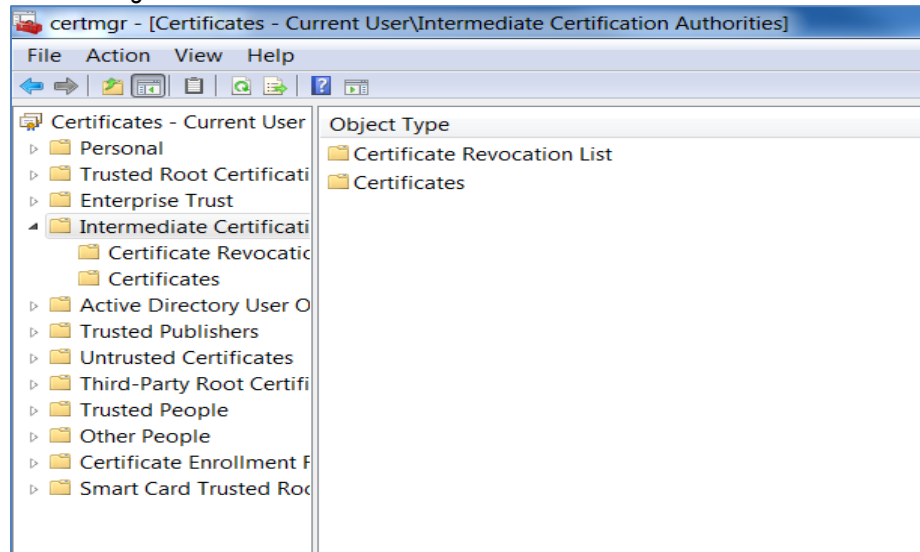


Figure 3 - Intermediate Certificate Store Location

- 3) Confirm the intermediate certificate is not already listed – GeoTrust RSA CA 2018

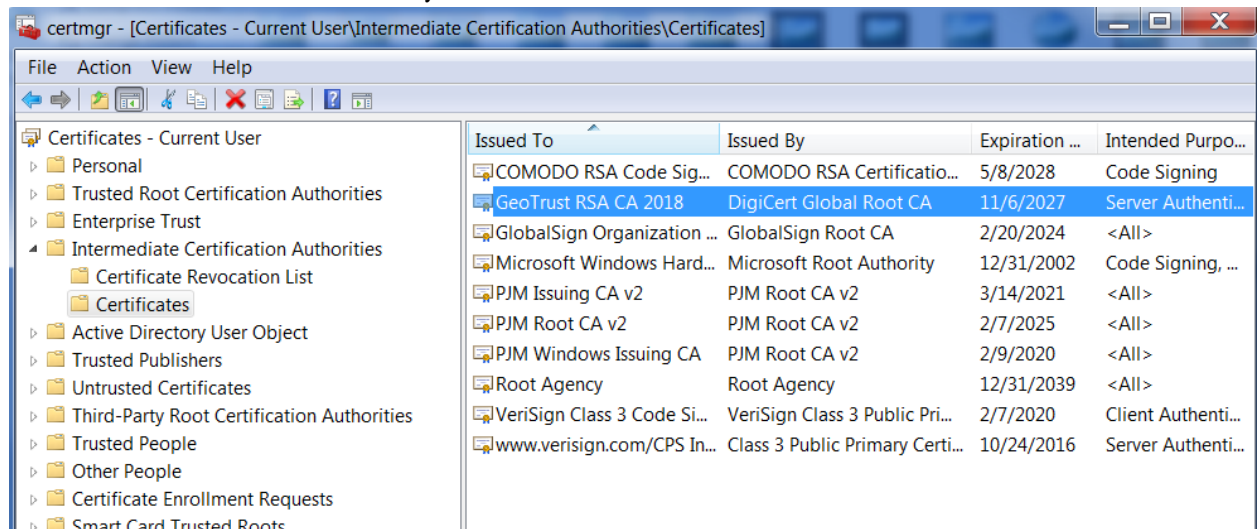


Figure 4 - Confirm GeoTrust Intermediate Certificate

- 4) **If not listed**, expand **certificates (local computer)**, expand **Intermediate Certification Authorities** right-click **Certificates**, click **All Tasks**, and then click **Import**.
- 5) **Import** the intermediate certificate.
 - a. In the **Certificate Import Wizard** dialog box, figure 5, click **Next**.



Figure 5 - Certificate Import Wizard

- b. In the **File name** box (figure 6), give the path of the intermediate certificate authority file downloaded in the first section of this document. For example, c:\windows\temp\intermediate.pem

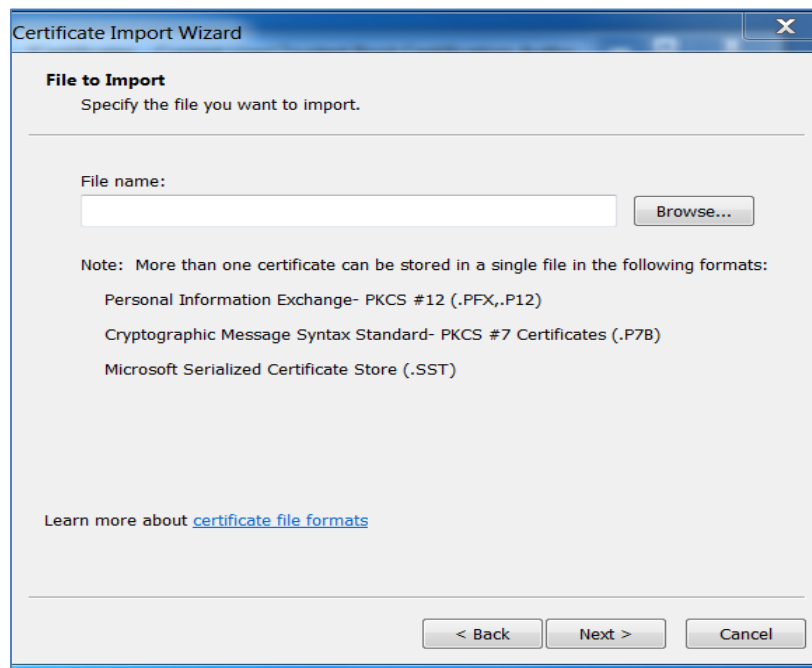


Figure 6 - Import File

- 6) Click **Next** two times.
- 7) Click **Finish**, and then click **OK**. You should see a message appear 'The import was successful'.

Import the Root Certificate

- 8) Expand **Certificates (local computer)**, expand **Trusted Root Certification Authorities**, and then click **Certificates**.
 - a. In the right pane, confirm that the certificate for 'DigiCert Global Root CA' is not listed.
 - b. If not listed, **import** the root certificate.

- c. **Expand Certificates (local computer)**, right-click **Trusted Root Certification Authorities**, click **All Tasks**, and then click **Import**.
- 9) **Import** the root certificate
- a. In the **Certificate Import Wizard** dialog box, figure 7, click **Next**.



Figure 7 - Certificate Import Wizard

- b. In the **File name** box (figure 8), give the path of the root certificate authority file downloaded in the first section of this document. For example, c:\windows\temp\root.pem

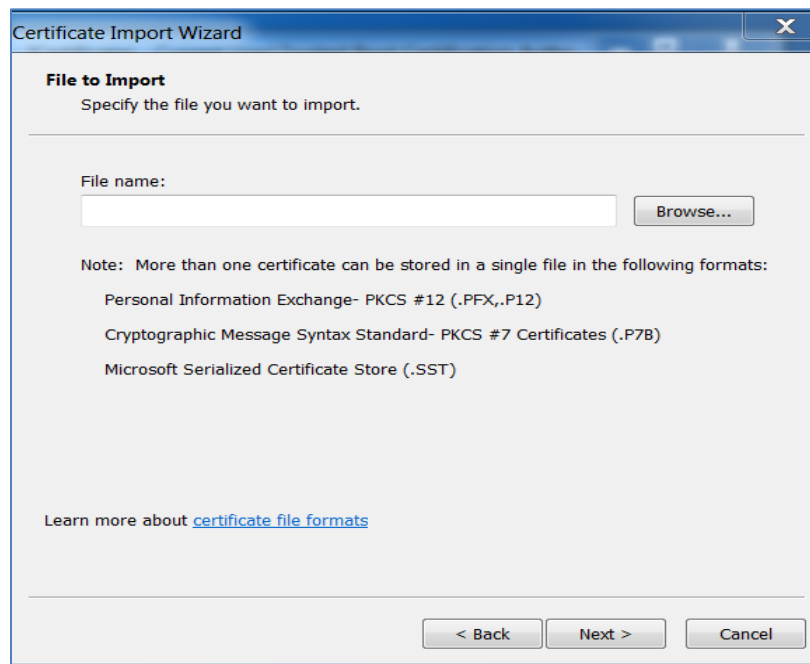


Figure 8 - Import File

- 10) Click **Next** two times.
- 11) Click **Finish**, and then click **OK**. You should see a message appear 'The import was successful'.