

# Transmission Expansion Advisory Committee – PSE&G Supplemental Projects

September 13, 2024

# Needs

Stakeholders must submit any comments within 10 days of this meeting in order to provide time necessary to consider these comments prior to the next phase of the M-3 process

**Need Number:** PSEG-2024-0004

**Process Stage:** Need Meeting 09/13/2024

**Supplemental Project Driver:**

- Customer Service

**Specific Assumption Reference:**

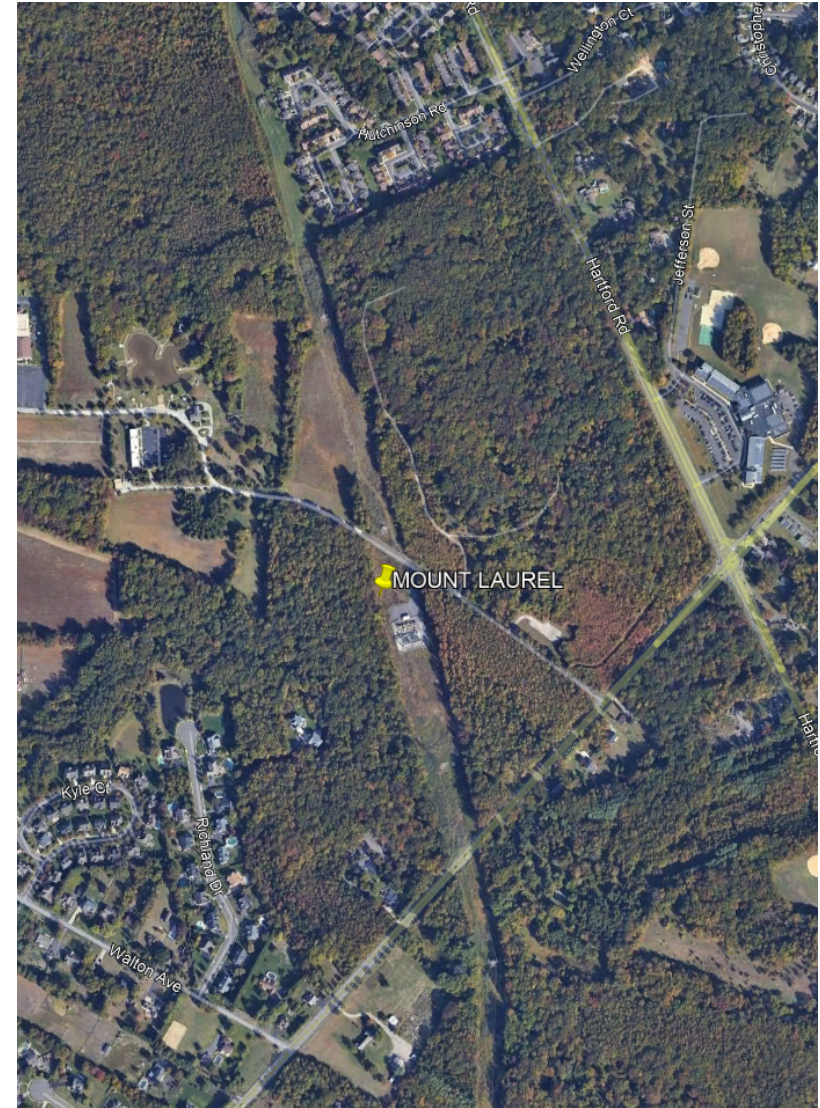
[PSE&G 2024 Annual Assumptions](#)

- Localized Load Growth & Contingency Overloads

**Problem Statement:**

- Mount Laurel Substation in Mount Laurel area is a station with no additional station capacity.
  - Mount Laurel serves about 14,300 customers with a station load of 69.90MVA in 2022. The actual station capacity is 60.60MVA. Projected contingency overload is 115.3%.

**Model:** 2022 Series 2027 Summer RTEP 50/50



# Appendix

# High level M-3 Meeting Schedule

Assumptions	Activity	Timing
	Posting of TO Assumptions Meeting information	20 days before Assumptions Meeting
	Stakeholder comments	10 days after Assumptions Meeting
Needs	Activity	Timing
	TOs and Stakeholders Post Needs Meeting slides	10 days before Needs Meeting
	Stakeholder comments	10 days after Needs Meeting
Solutions	Activity	Timing
	TOs and Stakeholders Post Solutions Meeting slides	10 days before Solutions Meeting
	Stakeholder comments	10 days after Solutions Meeting
Submission of Supplemental Projects & Local Plan	Activity	Timing
	Do No Harm (DNH) analysis for selected solution	Prior to posting selected solution
	Post selected solution(s)	Following completion of DNH analysis
	Stakeholder comments	10 days prior to Local Plan Submission for integration into RTEP
	Local Plan submitted to PJM for integration into RTEP	Following review and consideration of comments received after posting of selected solutions

# Revision History

09/03/2024 – V1 – Original version posted to pjm.com