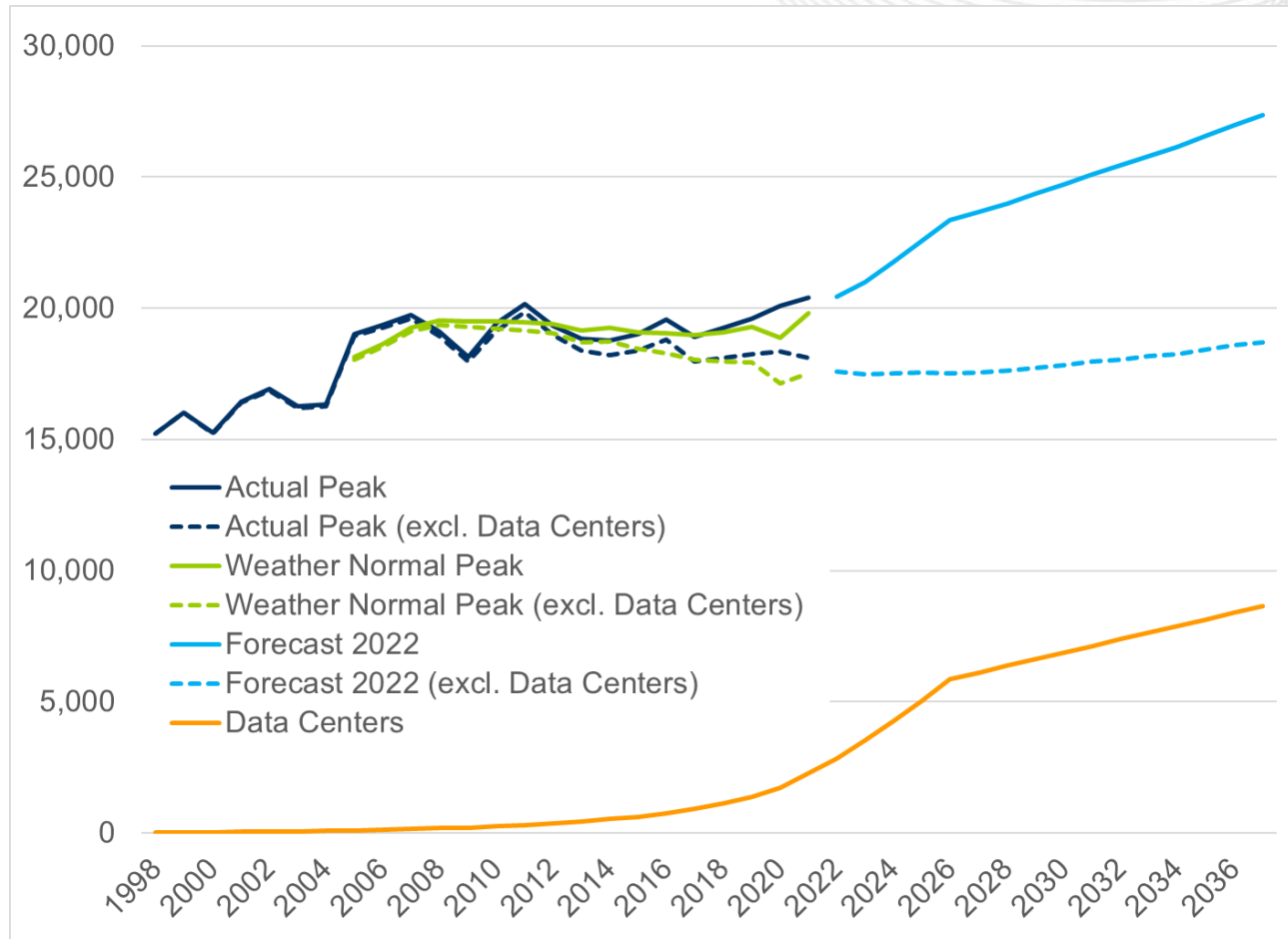


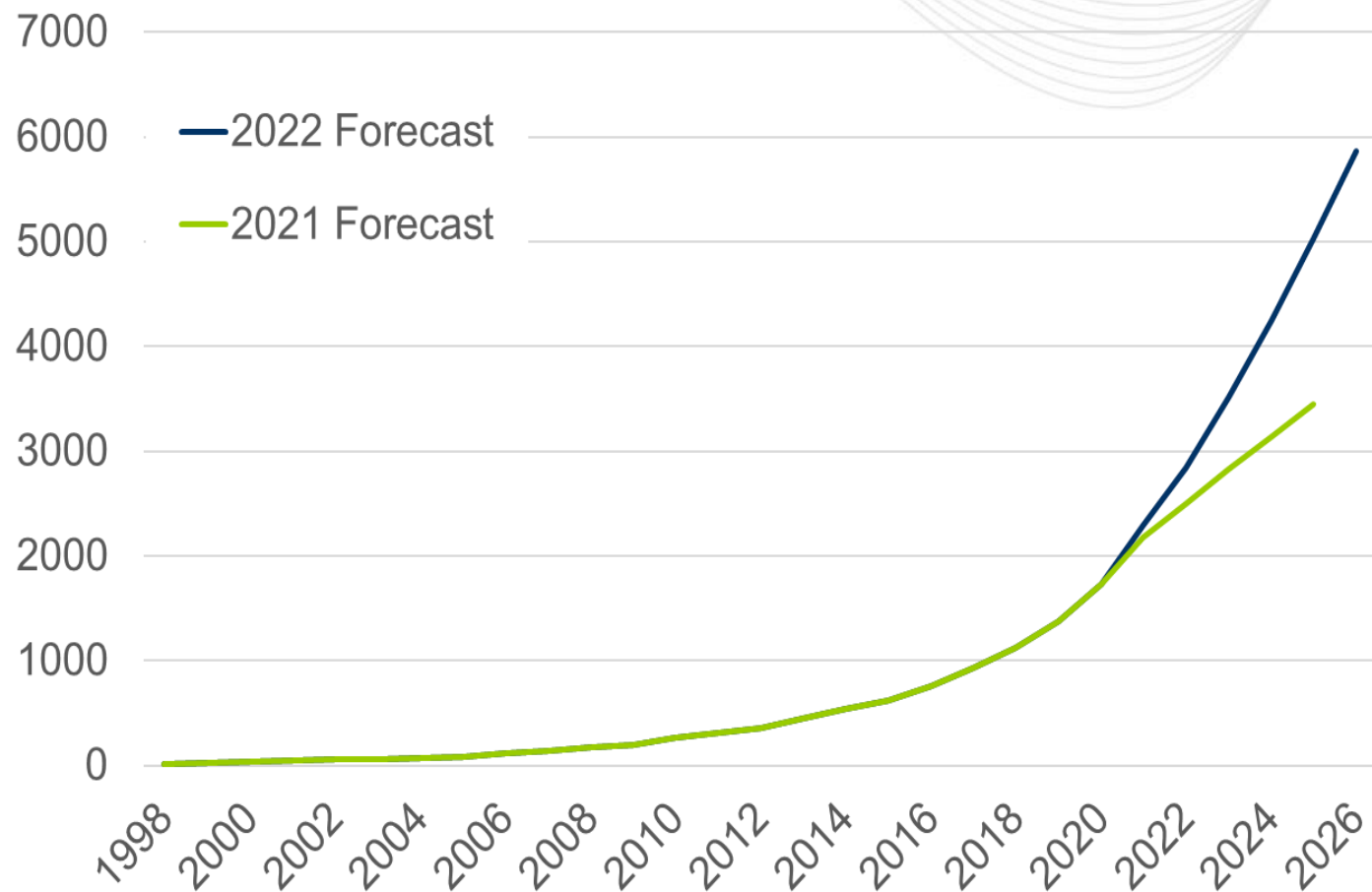


Dominion Data Center Alley Load Increase

TEAC June 7th 2022



- 2022-2027 Annualized Growth Rate
 - With data centers: 3%
 - Excluding data centers: 0%



- Forecasted data center additions for the 2022 Load Forecast provided by Dominion and NOVEC were noticeably higher than were provided in the prior year.

- Current Dominion analysis indicate reliability violations as early as 2025
- 2025 Violations (Basecase – Total Load: 10396 MWs):
 - N-1 and N-1-1 Reliability Violations
 - Generation Deliverability Violations
 - 8 total 230 kV thermal violations (within load area)
- PJM is analyzing the 2025 immediate need and the feasibility of holding a 30 day window.