

Dominion Supplemental Projects

Transmission Expansion Advisory
Committee
July 7, 2020

Needs

Stakeholders must submit any comments within 10 days of this meeting in order to provide time necessary to consider these comments prior to the next phase of the M-3 process

Dominion Transmission Zone: Supplemental Customer Load Request

Need Number: DOM-2020-0021

Process Stage: Need Meeting 07/07/2020

Project Driver: Customer Service

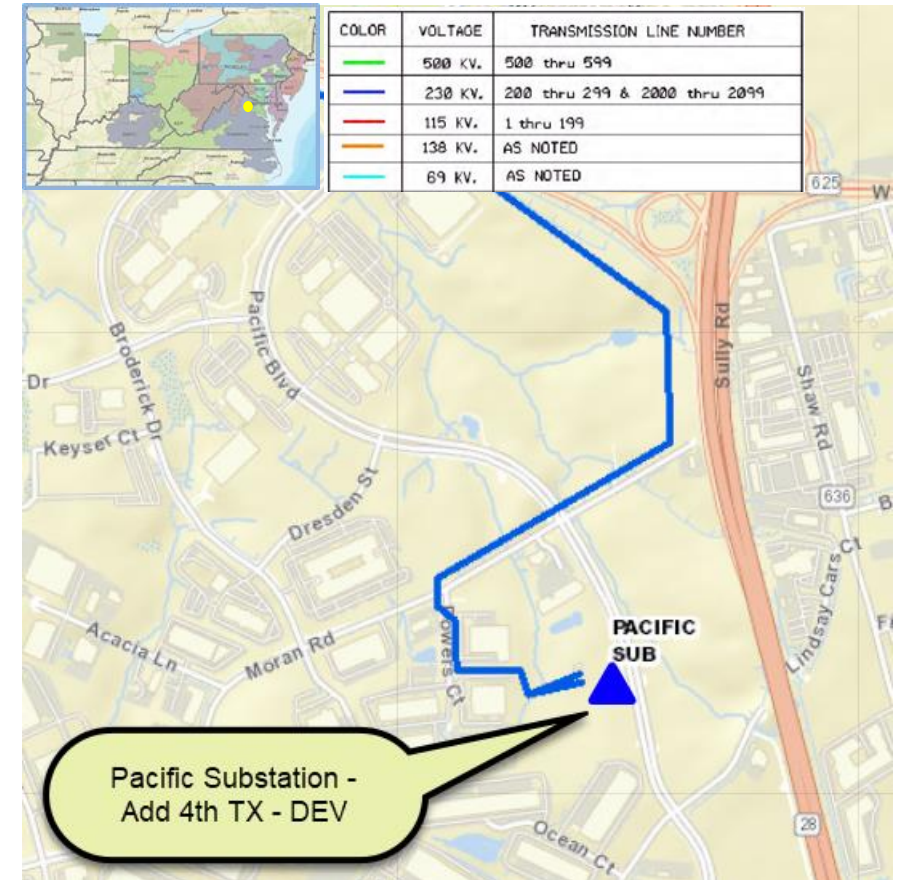
Specific Assumption References:

Customer load request will be evaluated per Dominion’s Facility Interconnection Requirements Document and Dominion’s Transmission Planning Criteria.

Problem Statement:

DEV Distribution has submitted a DP Request to add a 4th distribution transformer at Pacific Substation in Loudoun County. The new 112MVA transformer is being driven by continued load growth in the area and contingency loading for loss of one of the existing transformers. Requested in-service date is 12/15/2021.

Initial In-Service Load	Projected 2025 Load
Summer: 200 MW	Summer: 252 MW



Dominion Transmission Zone: Supplemental Customer Load Request

Need Number: DOM-2020-0022

Process Stage: Need Meeting 07/07/2020

Project Driver: Customer Service

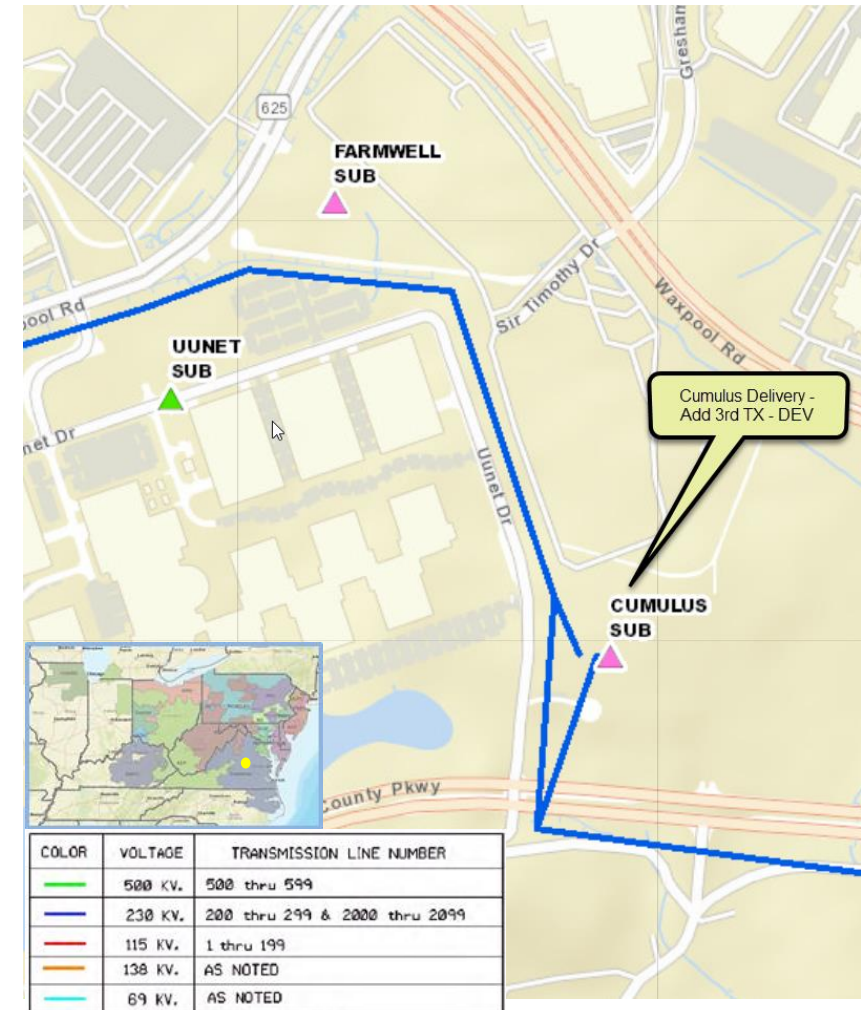
Specific Assumption References:

Customer load request will be evaluated per Dominion’s Facility Interconnection Requirements Document and Dominion’s Transmission Planning Criteria.

Problem Statement:

DEV Distribution has submitted a DP Request to add a 3rd distribution transformer at Cumulus Substation in Loudoun County. The new 84 MVA transformer is being driven by continued load growth in the area and contingency loading for loss of one of the existing transformers. Requested in-service date is 03/01/2022.

Initial In-Service Load	Projected 2025 Load
Summer: 130.4 MW	Summer: 252.6 MW



Dominion Transmission Zone: Supplemental Customer Load Request

Need Number: DOM-2020-0023

Process Stage: Need Meeting 07/07/2020

Project Driver: Customer Service

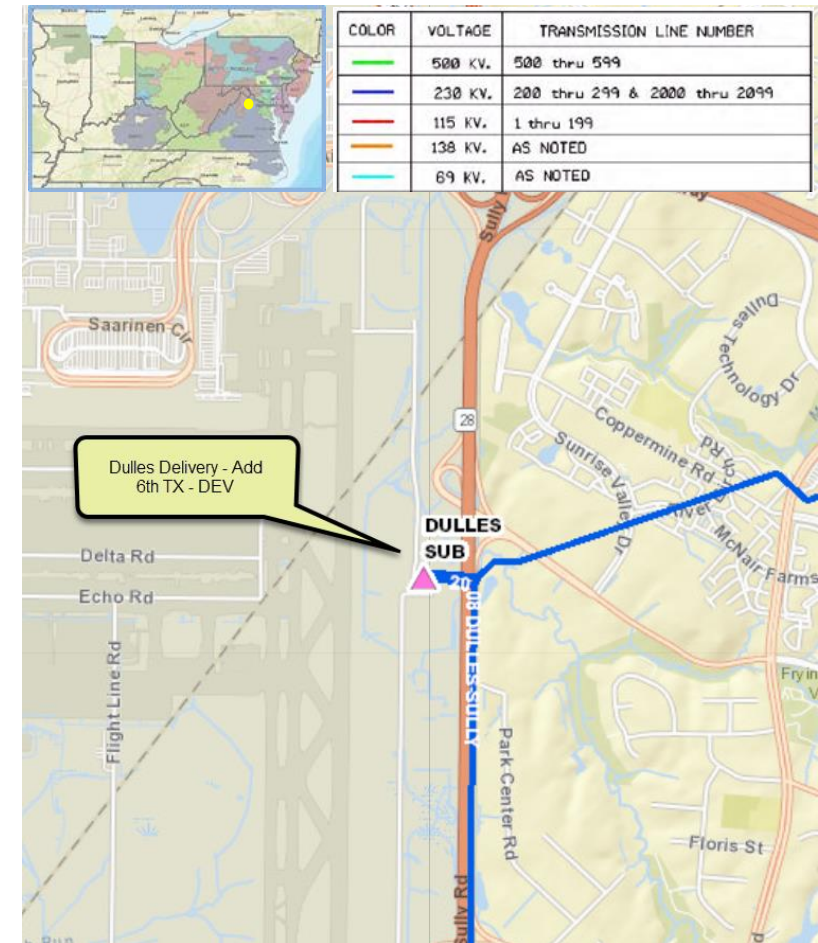
Specific Assumption References:

Customer load request will be evaluated per Dominion’s Facility Interconnection Requirements Document and Dominion’s Transmission Planning Criteria.

Problem Statement:

DEV Distribution has submitted a DP Request to add a 6th distribution transformer at Dulles Substation in Fairfax County. The new 84 MVA transformer is being driven by continued load growth in the area and contingency loading for loss of one of the existing transformers. Requested in-service date is 08/01/2021.

Initial In-Service Load	Projected 2025 Load
Summer: 204.6 MW	Summer: 241.3 MW



Dominion Transmission Zone: Supplemental Customer Load Request

Need Number: DOM-2020-0024

Process Stage: Need Meeting 07/07/2020

Project Driver: Customer Service

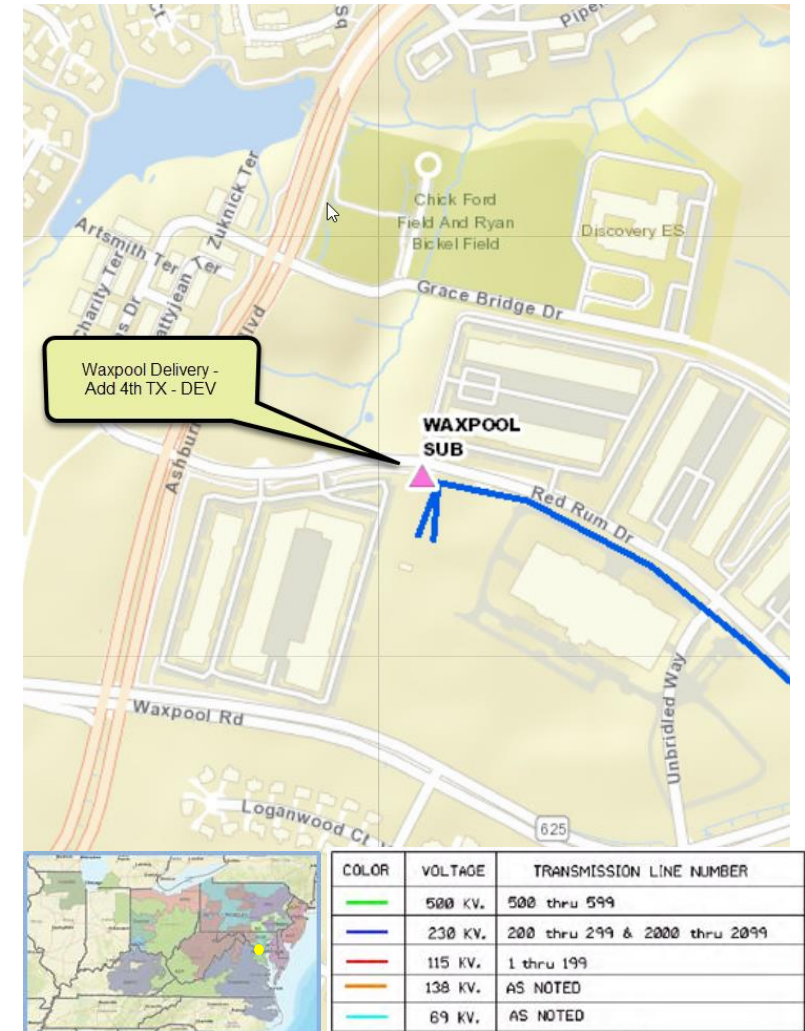
Specific Assumption References:

Customer load request will be evaluated per Dominion’s Facility Interconnection Requirements Document and Dominion’s Transmission Planning Criteria.

Problem Statement:

DEV Distribution has submitted a DP Request to add a 4th distribution transformer at Waxpool Substation in Loudoun County. The 84 MVA new transformer is being driven by continued load growth in the area and contingency loading for loss of one of the existing transformers. Requested in-service date is 08/01/2021.

Initial In-Service Load	Projected 2025 Load
Summer: 185.5 MW	Summer: 223.6 MW



Appendix

High level M-3 Meeting Schedule

Assumptions	Activity	Timing
	Posting of TO Assumptions Meeting information	20 days before Assumptions Meeting
	Stakeholder comments	10 days after Assumptions Meeting
Needs	Activity	Timing
	TOs and Stakeholders Post Needs Meeting slides	10 days before Needs Meeting
	Stakeholder comments	10 days after Needs Meeting
Solutions	Activity	Timing
	TOs and Stakeholders Post Solutions Meeting slides	10 days before Solutions Meeting
	Stakeholder comments	10 days after Solutions Meeting
Submission of Supplemental Projects & Local Plan	Activity	Timing
	Do No Harm (DNH) analysis for selected solution	Prior to posting selected solution
	Post selected solution(s)	Following completion of DNH analysis
	Stakeholder comments	10 days prior to Local Plan Submission for integration into RTEP
	Local Plan submitted to PJM for integration into RTEP	Following review and consideration of comments received after posting of selected solutions

Revision History

6/25/2020 – V1 – Original version posted to pjm.com.