

Transmission Expansion Advisory Committee –FirstEnergy (Met-Ed) Supplemental Projects

April 14, 2020

Needs

Stakeholders must submit any comments within 10 days of this meeting in order to provide time necessary to consider these comments prior to the next phase of the M-3 process

Need Number: ME-2020-001

Process Stage: Need Meeting 4/14/2020

Project Driver:

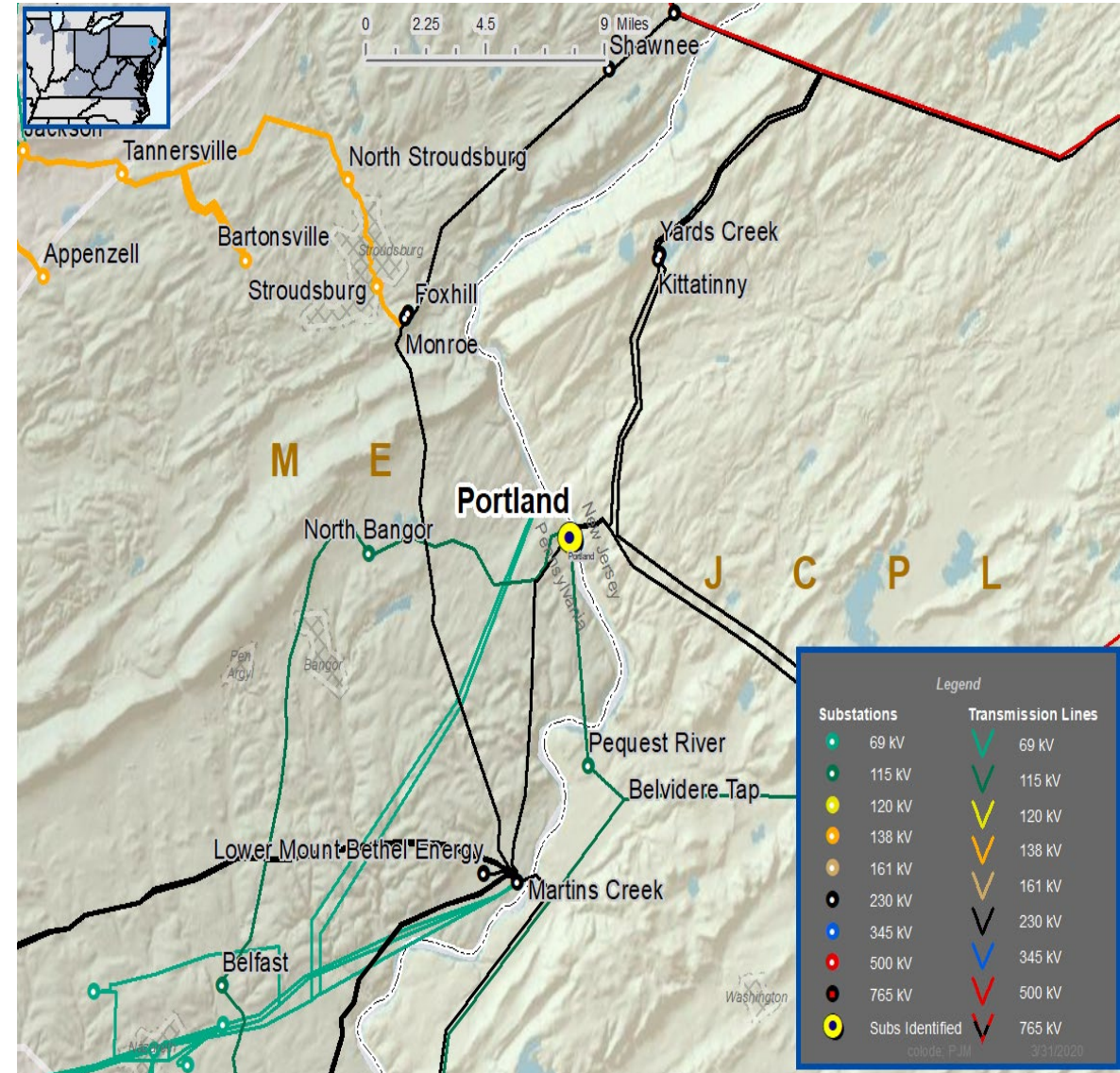
Equipment Material Condition, Performance and Risk

Specific Assumption Reference:

Equipment Failure

Problem Statement:

Portland 230/115 kV #3 Transformer was replaced with a spare transformer as a result of a failure in 2017. The transformer was installed on a temporary pad with temporary oil containment.



Need Number: ME-2020-003

Process Stage: Need Meeting 4/14/2020

Project Driver:

Operational Flexibility and Efficiency

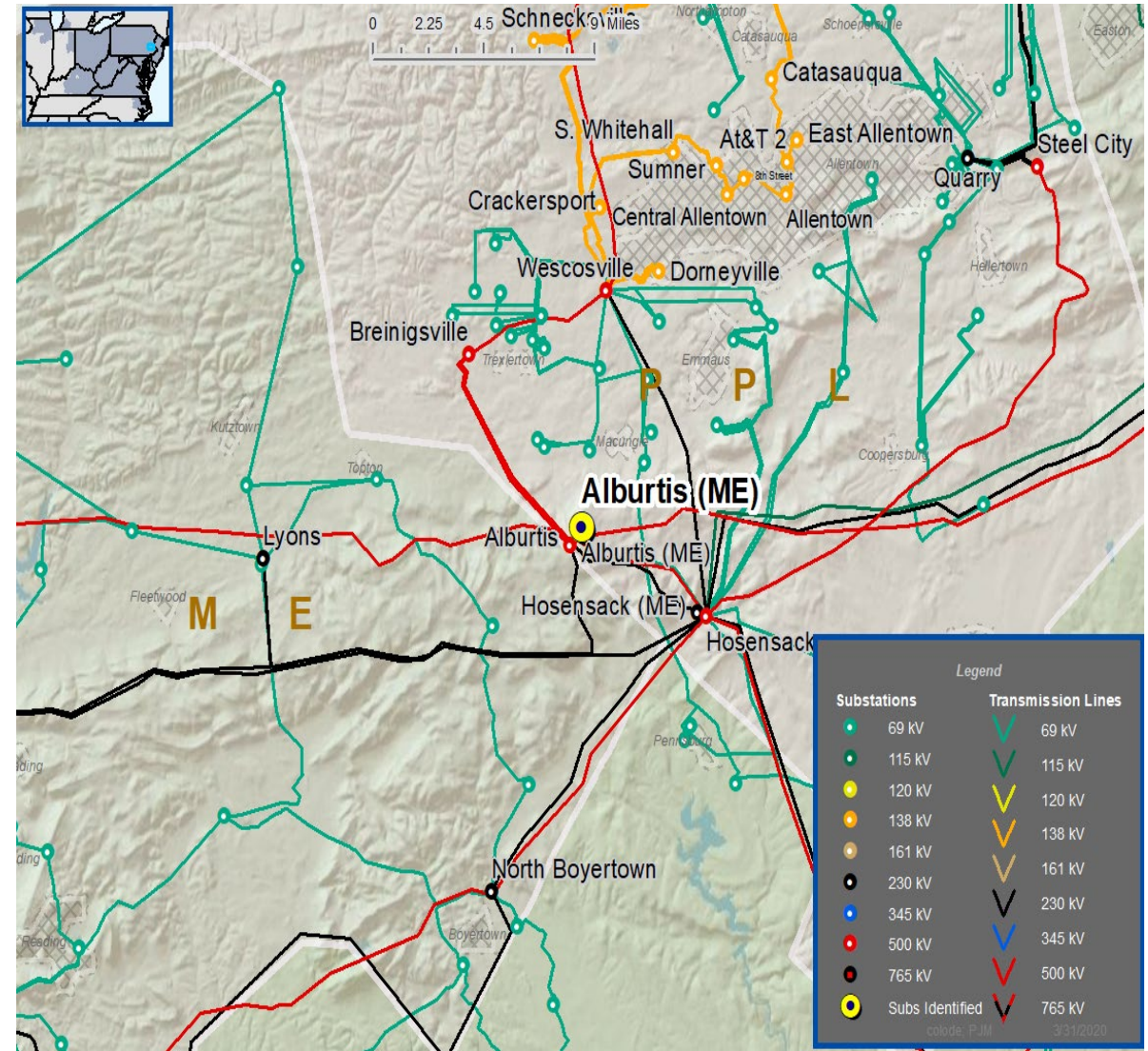
Specific Assumption Reference:

Add/Expand Bus Configuration

- Eliminate simultaneous outages to multiple networked elements

Problem Statement:

Current Alburtis configuration has two 230 kV lines and one 500/230 kV transformer connected to a straight bus. A bus outage or breaker failure would result in the loss of these three elements.



Questions?



Appendix

High level M-3 Meeting Schedule

Assumptions	Activity	Timing
	Posting of TO Assumptions Meeting information	20 days before Assumptions Meeting
	Stakeholder comments	10 days after Assumptions Meeting
Needs	Activity	Timing
	TOs and Stakeholders Post Needs Meeting slides	10 days before Needs Meeting
	Stakeholder comments	10 days after Needs Meeting
Solutions	Activity	Timing
	TOs and Stakeholders Post Solutions Meeting slides	10 days before Solutions Meeting
	Stakeholder comments	10 days after Solutions Meeting
Submission of Supplemental Projects & Local Plan	Activity	Timing
	Do No Harm (DNH) analysis for selected solution	Prior to posting selected solution
	Post selected solution(s)	Following completion of DNH analysis
	Stakeholder comments	10 days prior to Local Plan Submission for integration into RTEP
	Local Plan submitted to PJM for integration into RTEP	Following review and consideration of comments received after posting of selected solutions

Revision History

4/1/2020 – V1 – Original version posted to pjm.com