



# PJM Western Sub-Regional RTEP Committee EKPC Supplemental Upgrades

April 23, 2019

# Needs

Stakeholders must submit any comments within 10 days of this meeting in order to provide time necessary to consider these comments prior to the next phase of the M-3 process

**Need Number:** EKPC-2019-008

**Process Stage:** Needs Meeting 4/23/2019

**Supplemental Project Driver:**

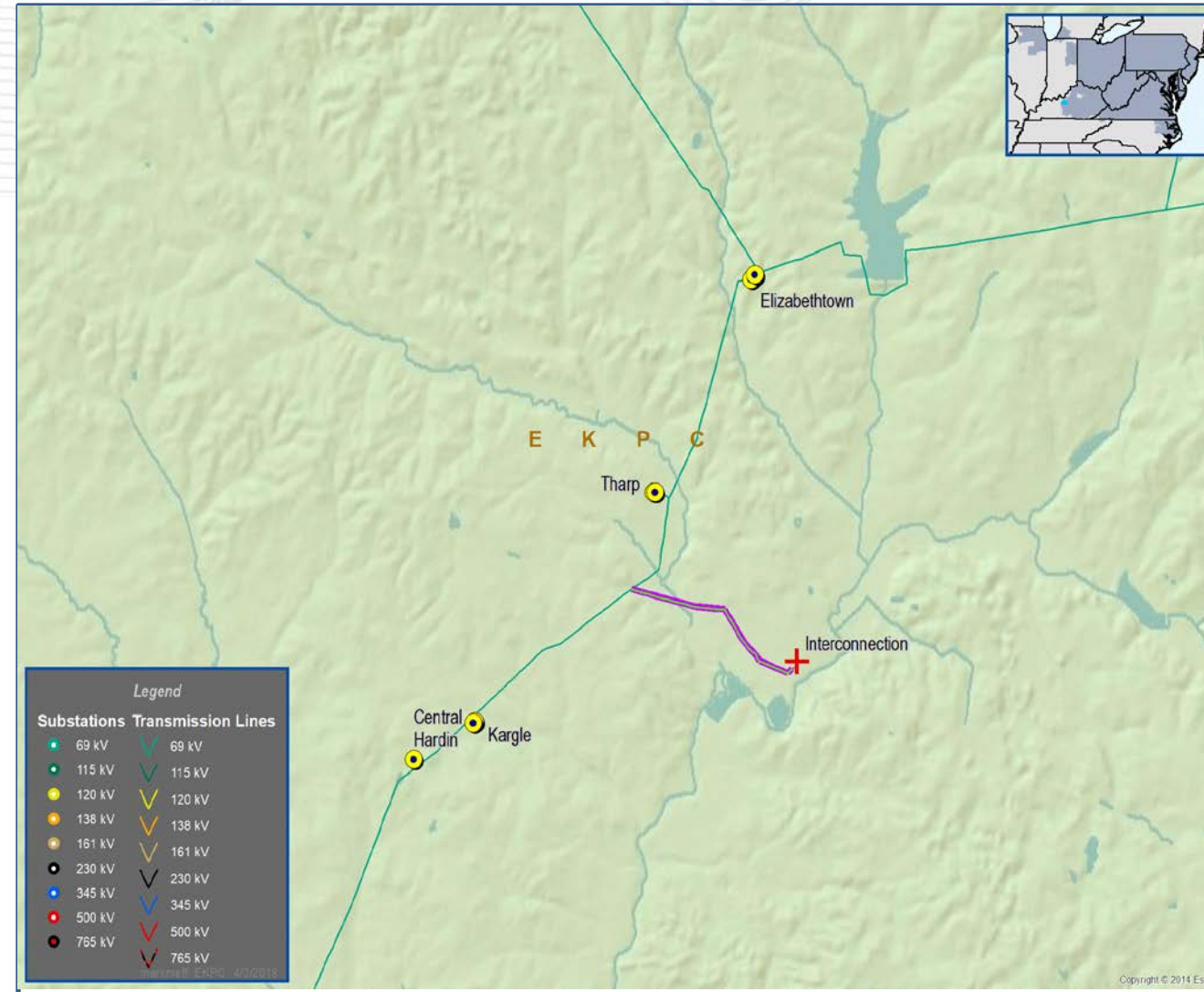
Equipment Material Condition, Performance and Risk/Operational Flexibility and Efficiency

**Specific Assumption References:**

EKPC Assumptions Presentation Slides 8 and 9

**Problem Statement:**

The EKPC-owned Kargle-LGE/KU Elizabethtown 69 kV tie-line was the most restrictive facility for scheduling of maintenance outages on the EKPC transmission system for the 2016-2017 period due to the conductor rating. Additionally, this facility restricts the ability of LGE/KU to schedule outages on the transmission system in the area. These restrictions are prevalent even during light load conditions, resulting in either inability to take maintenance outages or sectionalizing of the transmission system to shed load for subsequent outages in the area. Furthermore, this facility was constructed in 1958, and many of the wood poles are in marginal condition.



# Solutions

Stakeholders must submit any comments within 10 days of this meeting in order to provide time necessary to consider these comments prior to the next phase of the M-3 process



**Need Number:** EKPC-2019-007

**Process Stage:** Solutions Meeting 4/23/2019

**Previously Presented:**

Needs Meeting 2/20/2019

**Supplemental Project Driver:**

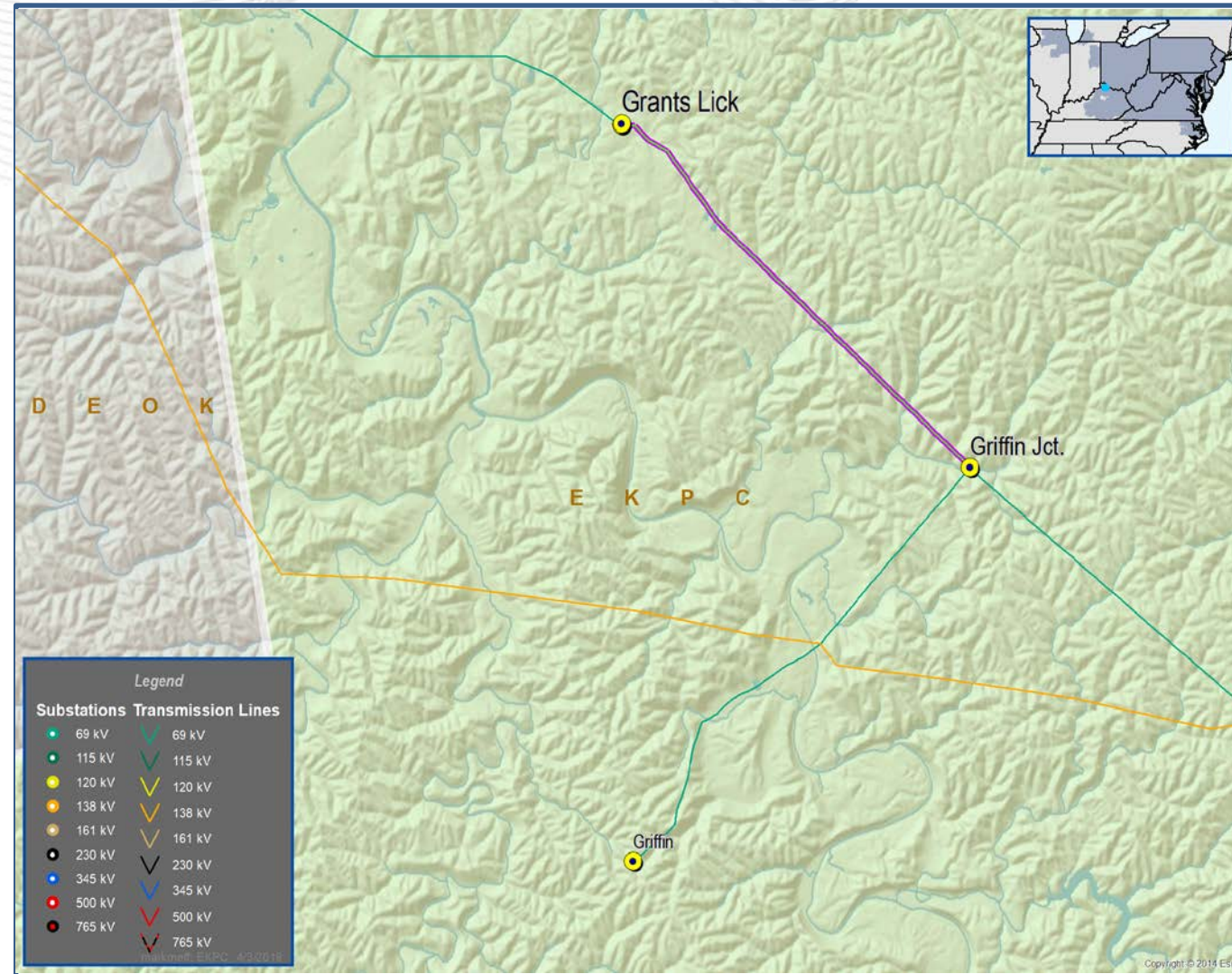
Equipment Material Condition, Performance and Risk

**Specific Assumption References:**

EKPC Assumptions Presentation Slide 8

**Problem Statement:**

The Grants Lick to Griffin Junction line section is 62 years old. The LineVue robot from Kinectrics Corporation revealed that the majority of the line section is in poor condition (static and conductor). The EKPC Reliability team has included this line section in their top 10 of line sections that should be addressed due to the condition assessment.



**Need Number:** EKPC-2019-007

**Process Stage:** Solutions Meeting 4/23/2019

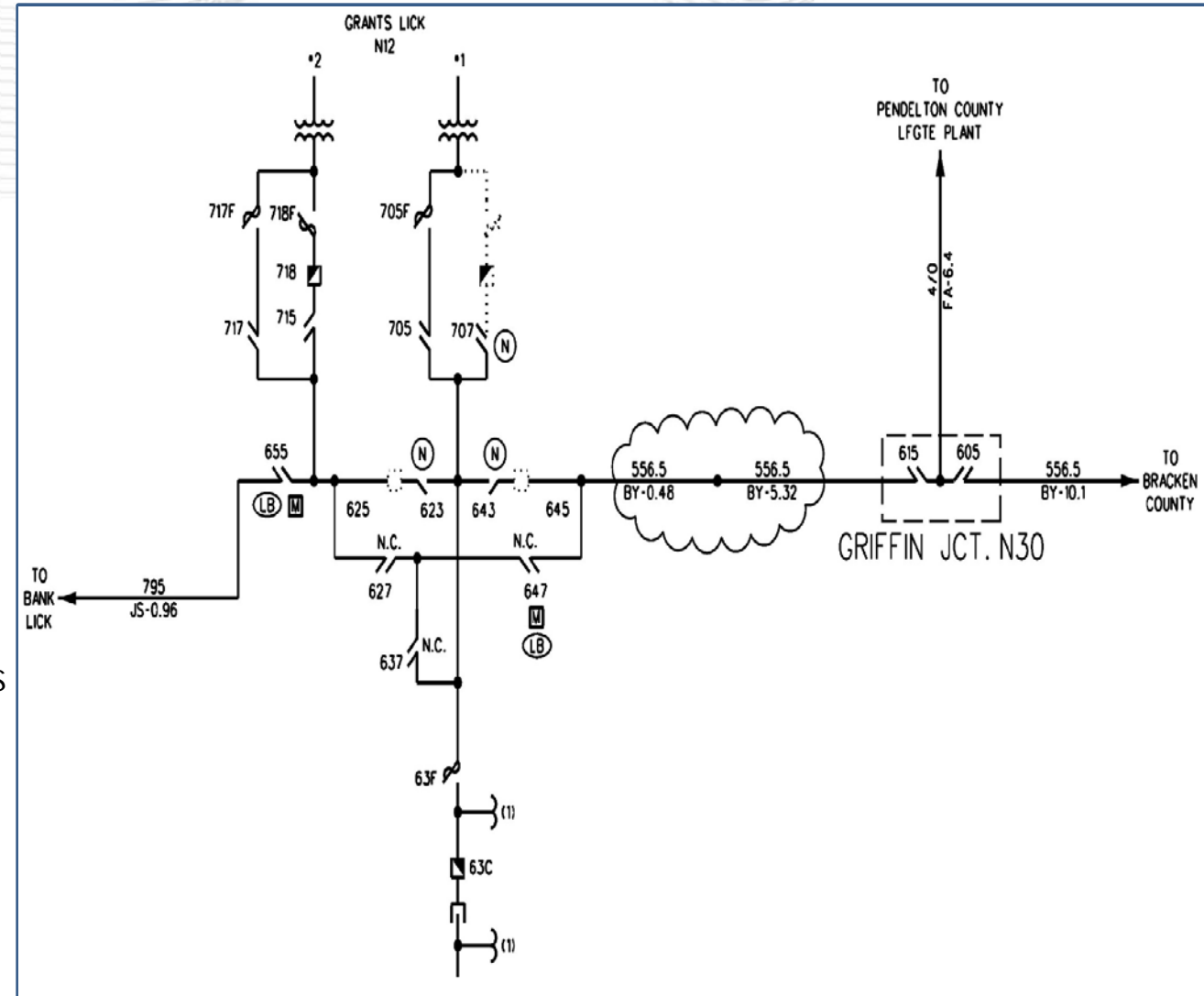
**Potential Solution:**

Rebuild Grants Lick-Griffin Jct 69 KV line using 556.5 ACSR/TW (5.8 miles). \$2.5M

**Alternatives Considered:**

1. Partial Rebuild (replace 71% of structures) and replace existing conductor using 556.5 ACSR/TW. \$1.7M
2. Construct 4.5 miles of 69 KV from Grants Lick to a foreign utility normally-open interconnection point and retire the existing Grants Lick-Griffin Jct line section. \$4.5M

**Projected In-Service:** 12/1/2021





# Appendix



# High level M-3 Meeting Schedule

## Assumptions

Activity	Timing
Posting of TO Assumptions Meeting information	20 days before Assumptions Meeting
Stakeholder comments	10 days after Assumptions Meeting

## Needs

Activity	Timing
TOs and Stakeholders Post Needs Meeting slides	10 days before Needs Meeting
Stakeholder comments	10 days after Needs Meeting

## Solutions

Activity	Timing
TOs and Stakeholders Post Solutions Meeting slides	10 days before Solutions Meeting
Stakeholder comments	10 days after Solutions Meeting

## Submission of Supplemental Projects & Local Plan

Activity	Timing
Do No Harm (DNH) analysis for selected solution	Prior to posting selected solution
Post selected solution(s)	Following completion of DNH analysis
Stakeholder comments	10 days prior to Local Plan Submission for integration into RTEP
Local Plan submitted to PJM for integration into RTEP	Following review and consideration of comments received after posting of selected solutions





# Revision History

4/12/2019 – V1 – Original version posted to pjm.com

4/16/2019 – V2 – Slide #3: Change Need number to EKPC-2019-008