

Subregional RTEP Committee – Mid-Atlantic FirstEnergy Supplemental Projects

June 13, 2024

Solutions

Stakeholders must submit any comments within 10 days of this meeting in order to provide time necessary to consider these comments prior to the next phase of the M-3 process

Met-Ed Transmission Zone M-3 Process North Temple – Allentown Cement 69 kV Line Customer Connection

Need Number: ME-2024-010

Process Stage: Solution Meeting – 6/13/2024

Previously Presented: Need Meeting – 5/16/2024

Project Driver(s):

Customer Service

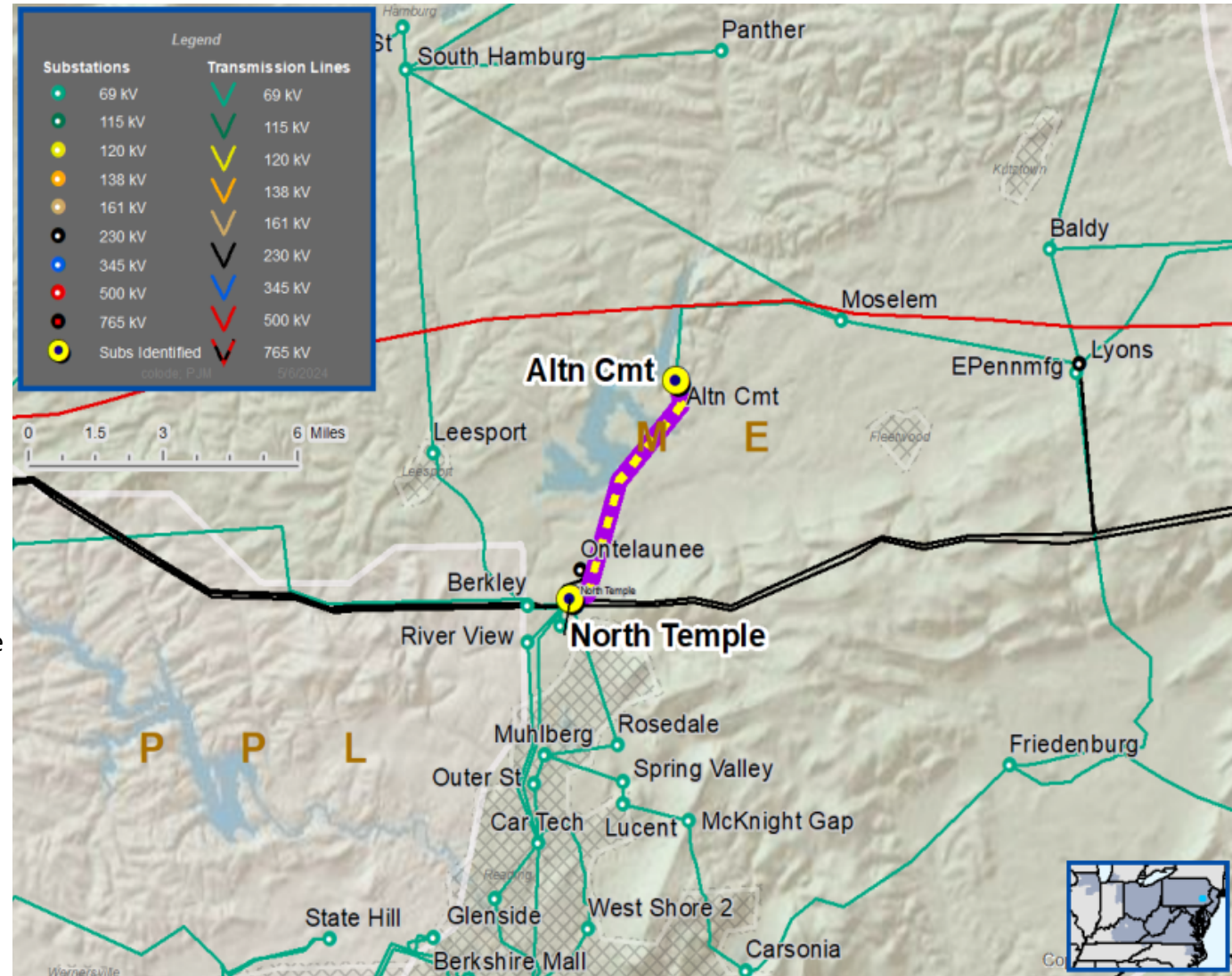
Specific Assumption Reference(s)

New customer connection request will be evaluated per FirstEnergy’s “Requirements for Transmission Connected Facilities” document and “Transmission Planning Criteria” document.

Problem Statement

New Customer Connection – Met-Ed distribution requested 69 kV service for a load of approximately 13 MVA near the North Temple – Allentown Cement 69 kV Line. The service request location is approximately three miles from North Temple Substation.

Requested in-service date is 6/1/2025



Met-Ed Transmission Zone M-3 Process North Temple – Allentown Cement 69 kV Line Customer Connection

Need Number: ME-2024-010

Process Stage: Solution Meeting –6/13/2024

Proposed Solution:

69 kV Transmission Line Tap

- Install three SCADA controlled transmission line switches
- Construct approximately 1-2 spans of transmission line from tap point to customer substation
- Install one 69 kV revenue metering package at customer substation
- Modify relay settings at North Temple and Allentown Cement substations

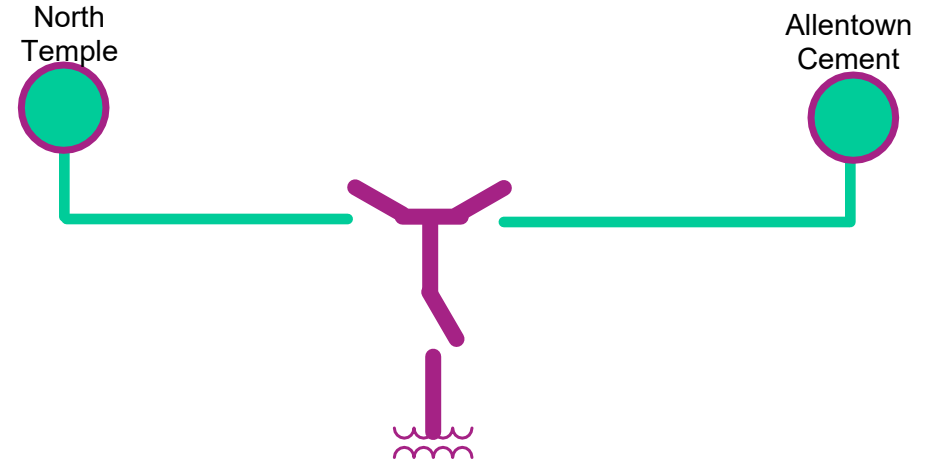
Alternatives Considered:

- No other feasible alternatives considered due to the customers proximity to the North Temple - Allentown Cement 69 kV Line.

Estimated Project Cost: \$0.70M

Projected In-Service: 6/1/2025

Status: Engineering



Legend	
500 kV	
345 kV	
115 kV	
69 kV	
34.5 kV	
23 kV	
New	

Need Number: ME-2024-011

Process Stage: Solution Meeting – 6/13/2024

Previously Presented: Need Meeting – 5/16/2024

Project Driver(s):

Customer Service

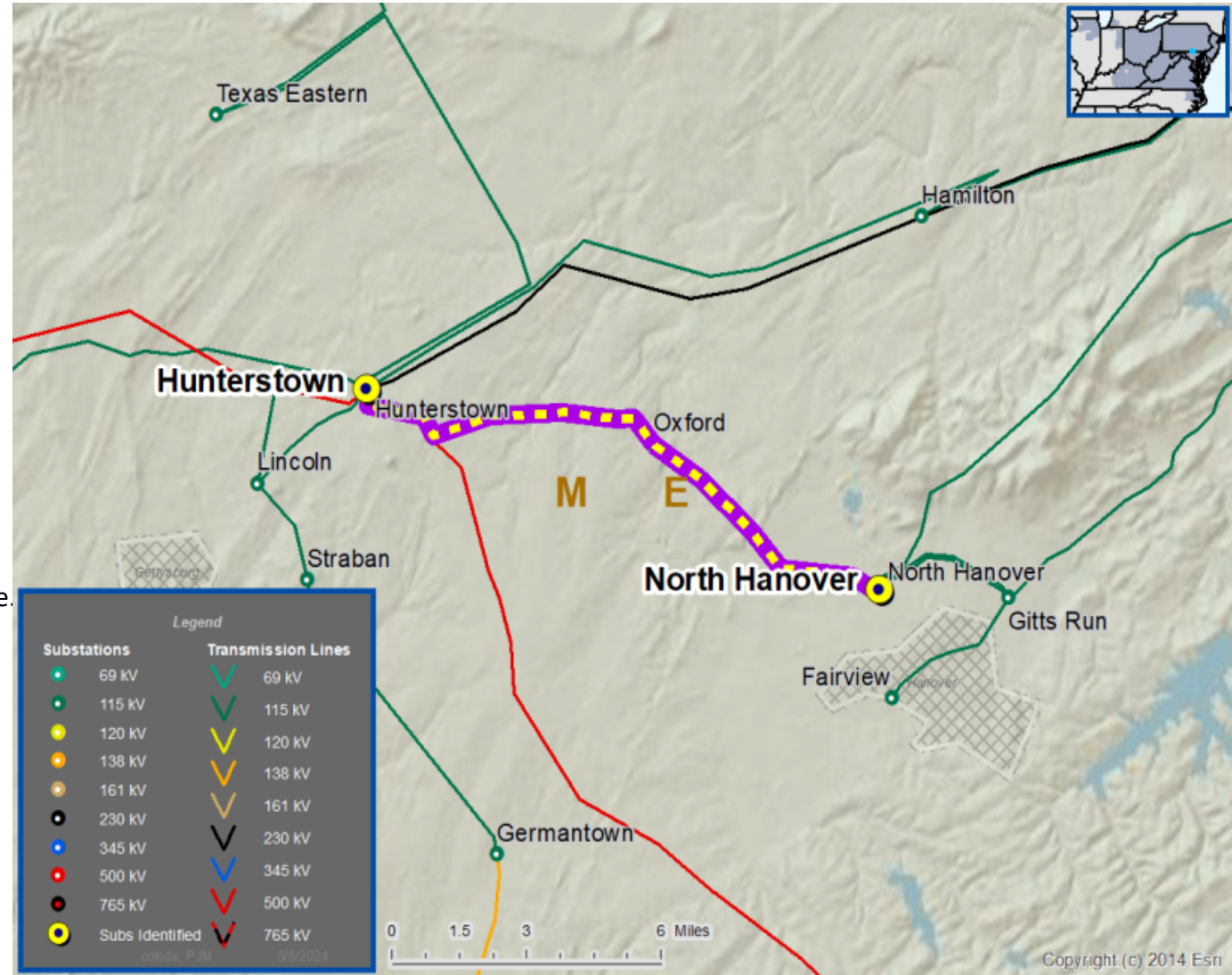
Specific Assumption Reference(s)

New customer connection request will be evaluated per FirstEnergy’s “Requirements for Transmission Connected Facilities” document and “Transmission Planning Criteria” document.

Problem Statement

New Customer Connection – Met-Ed distribution requested 115 kV service for load of approximately 22 MVA near the Hunterstown – North Hanover 115 kV Line. The service request location is approximately two miles from North Hanover Substation.

Requested in-service date is 1/11/2027



Met-Ed Transmission Zone M-3 Process Hunterstown – North Hanover 115 kV Line Customer Connection

Need Number: ME-2024-011

Process Stage: Solution Meeting – 6/13/2024

Proposed Solution:

115 kV Transmission Line Tap

- Install three SCADA controlled transmission line switches
- Construct approximately 1-2 spans of transmission line from tap point to customer substation
- Install one 115 kV revenue metering package at customer substation
- Modify relay settings at North Hanover and Hunterstown substations

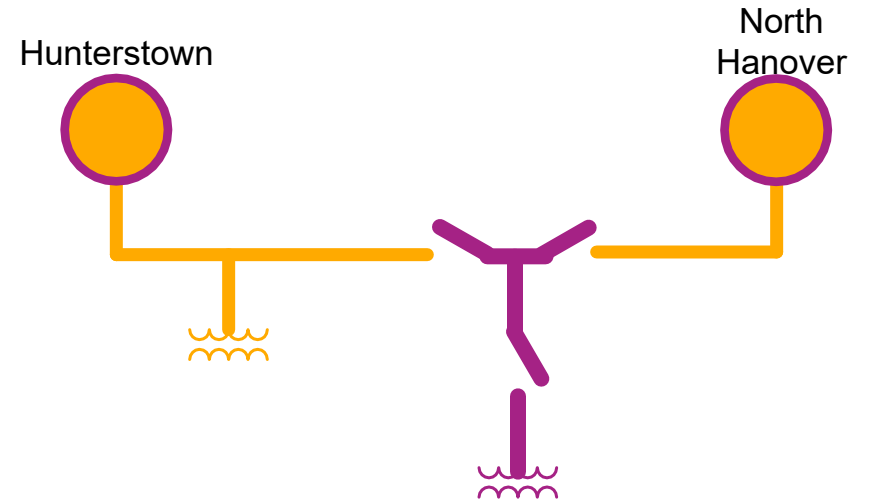
Alternatives Considered:

- No other feasible alternatives considered due to the customers proximity to the Hunterstown – North Hanover 115 kV Line.

Estimated Project Cost: \$1.70M

Projected In-Service: 1/11/2027

Status: Engineering



Legend	
500 kV	
345 kV	
115 kV	
69 kV	
34.5 kV	
23 kV	
New	



Questions?

Appendix

High level M-3 Meeting Schedule

Assumptions	Activity	Timing
	Posting of TO Assumptions Meeting information	20 days before Assumptions Meeting
	Stakeholder comments	10 days after Assumptions Meeting
Needs	Activity	Timing
	TOs and Stakeholders Post Needs Meeting slides	10 days before Needs Meeting
	Stakeholder comments	10 days after Needs Meeting
Solutions	Activity	Timing
	TOs and Stakeholders Post Solutions Meeting slides	10 days before Solutions Meeting
	Stakeholder comments	10 days after Solutions Meeting
Submission of Supplemental Projects & Local Plan	Activity	Timing
	Do No Harm (DNH) analysis for selected solution	Prior to posting selected solution
	Post selected solution(s)	Following completion of DNH analysis
	Stakeholder comments	10 days prior to Local Plan Submission for integration into RTEP
	Local Plan submitted to PJM for integration into RTEP	Following review and consideration of comments received after posting of selected solutions

Revision History

6/03/2024 – V1 – Original version posted to pjm.com