



Sub Regional RTEP Committee PJM Mid-Atlantic Reliability Update

December 20, 2021



First Review Baseline Reliability Project

Process Stage: First Review

Criteria: PSEG FERC Form 715

Assumption Reference: 2026 RTEP assumption

Model Used for Analysis: 2026 RTEP Summer case

Proposal Window Exclusion: Immediate Need/ Below 200 kV

Problem Statement:

A large customer located in the Princeton Area is increasing peak load to 44MW. Per PSE&G's FERC Form 715 criteria, if load exceeds 20 MW and an N-1-1 event would result in a complete loss of electric supply for more than 24 hours, a third source is required.

Proposed Solution:

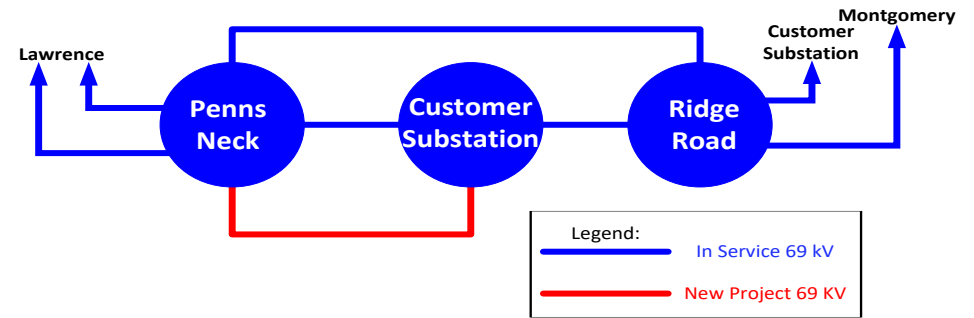
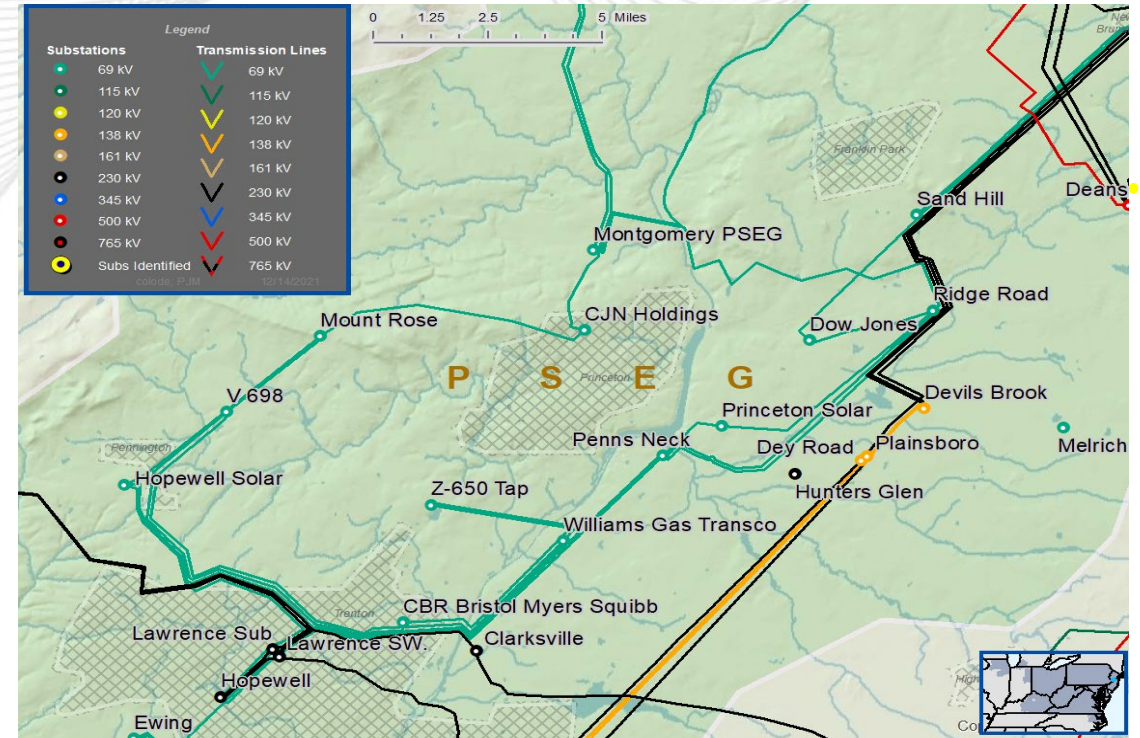
Construct a third 69kV supply line from Penns Neck substation to the West Windsor substation.

Estimated Cost: \$1.05 M

Alternatives:

- A third 69kV supply from Ridge Road would be considerably longer with routing challenges.
- There is no transmission in the area for a potential alternate supply.

Required In-Service: 1/1/2023



Questions?



A large blue arrow pointing to the right, with the year "2022" centered inside it in white text.

2022

- The Next 2022 Mid-Atlantic SRRTEP meetings are as followed
- 1/20
- 2/17
- 3/17
- 4/19
- 5/18
- 6/13



V1 – 12/15/2021 – Original slides posted