

# Subregional RTEP Committee – Mid-Atlantic FirstEnergy (Met-Ed) Supplemental Projects

October 14, 2021

# Needs

Stakeholders must submit any comments within 10 days of this meeting in order to provide time necessary to consider these comments prior to the next phase of the M-3 process

**Need Number:** ME-2021-004

**Process Stage:** Need Meeting 10/14/2021

**Project Driver:**

*Customer Service*

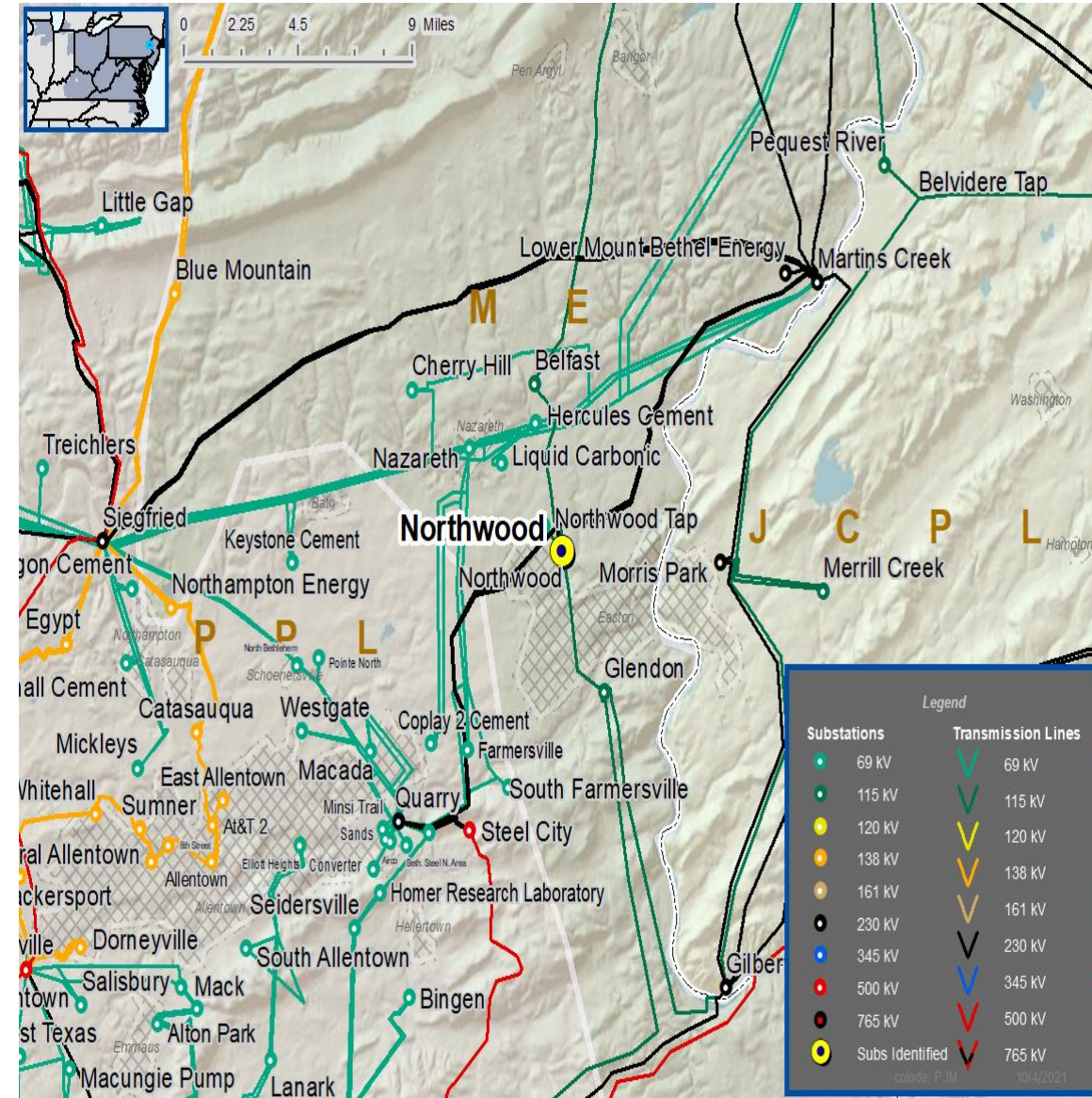
**Specific Assumption Reference:**

Customer request will be evaluated per FirstEnergy’s “Requirements for Transmission Connected Facilities” document and “Transmission Planning Criteria” document.

**Problem Statement:**

New Customer Connection – A customer requested 115 kV service; anticipated load is 30 MVA; location is near the Northwood 230 & 115 kV Substation

Requested in-service date is 5/31/2022



# Solutions

Stakeholders must submit any comments within 10 days of this meeting in order to provide time necessary to consider these comments prior to the next phase of the M-3 process



**Need Number:** ME-2021-001

**Process Stage:** Solution Meeting 10/14/2021

**Previously Presented:** Need Meeting 5/20/2021

**Project Driver:**

*Customer Service*

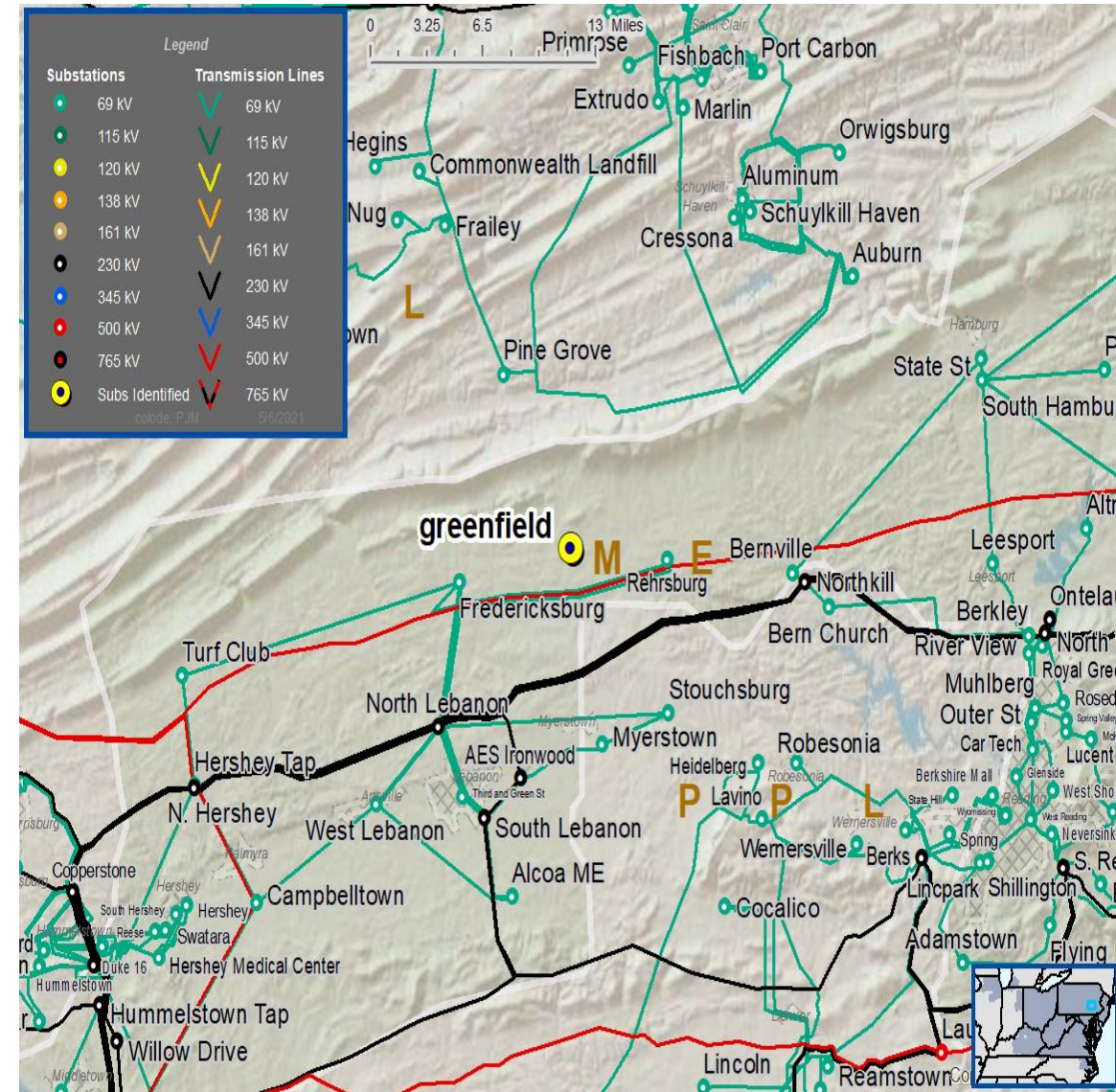
**Specific Assumption Reference:**

Customer request will be evaluated per FirstEnergy’s “Requirements for Transmission Connected Facilities” document and “Transmission Planning Criteria” document.

**Problem Statement:**

New Customer Connection – A customer requested 69 kV service; anticipated load is 12 MVA; location is near the Frystown 69 kV substation

Requested in-service date is 11/1/2021



**Need Number:** ME-2021-001

**Process Stage:** Solution Meeting 10/14/2021

**Proposed Solution:**

- Tap the North Lebanon Tap - Frystown 69 kV line
- Install 69 kV switches
- Construct ~2 span of 69 kV to customer substation

**Alternatives Considered:**

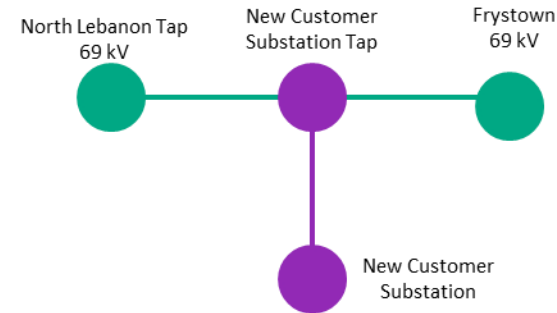
- None

**Estimated Project Cost:** \$0.8M

**Projected In-Service:** 11/01/2021

**Project Status:** Conceptual

**Model:** 2020 RTEP model for 2025 Summer (50/50)



Legend	
500 kV	
345 kV	
230 kV	
138 kV	
115 kV	
69 kV	
46 kV	
34.5 kV	
23 kV	
New	

# Questions?



# Appendix



# High level M-3 Meeting Schedule

Assumptions	Activity	Timing
	Posting of TO Assumptions Meeting information	20 days before Assumptions Meeting
	Stakeholder comments	10 days after Assumptions Meeting
Needs	Activity	Timing
	TOs and Stakeholders Post Needs Meeting slides	10 days before Needs Meeting
	Stakeholder comments	10 days after Needs Meeting
Solutions	Activity	Timing
	TOs and Stakeholders Post Solutions Meeting slides	10 days before Solutions Meeting
	Stakeholder comments	10 days after Solutions Meeting
Submission of Supplemental Projects & Local Plan	Activity	Timing
	Do No Harm (DNH) analysis for selected solution	Prior to posting selected solution
	Post selected solution(s)	Following completion of DNH analysis
	Stakeholder comments	10 days prior to Local Plan Submission for integration into RTEP
	Local Plan submitted to PJM for integration into RTEP	Following review and consideration of comments received after posting of selected solutions

# Revision History

10/4/2021 – V1 – Original version posted to pjm.com