



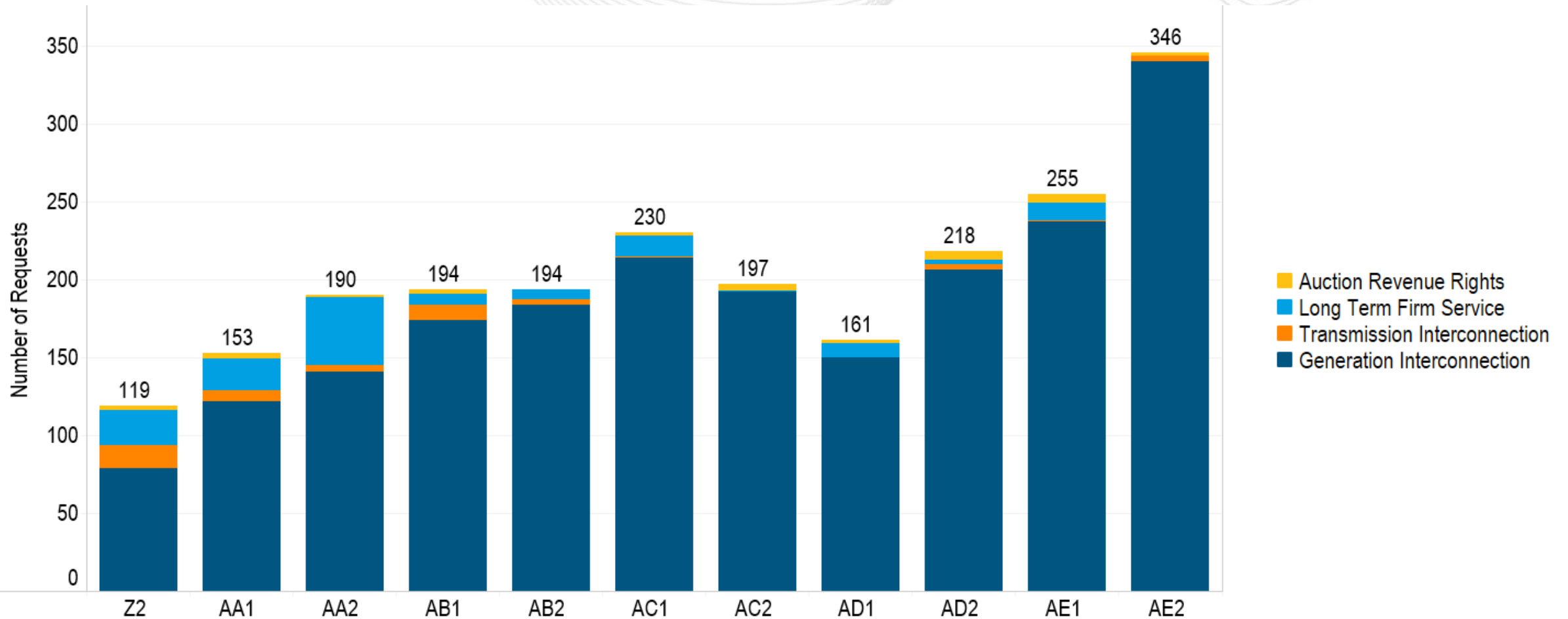
# PJM Interconnection Queue Status & Statistics Update

Onyinye Caven  
Interconnection Projects  
May 16, 2019

- Recent Queue Trends: Z2 (Nov 2013) - AE2 (Oct 2018)
- Generation Phase Progression

# Recent Queue Trends: Z2 - AE2

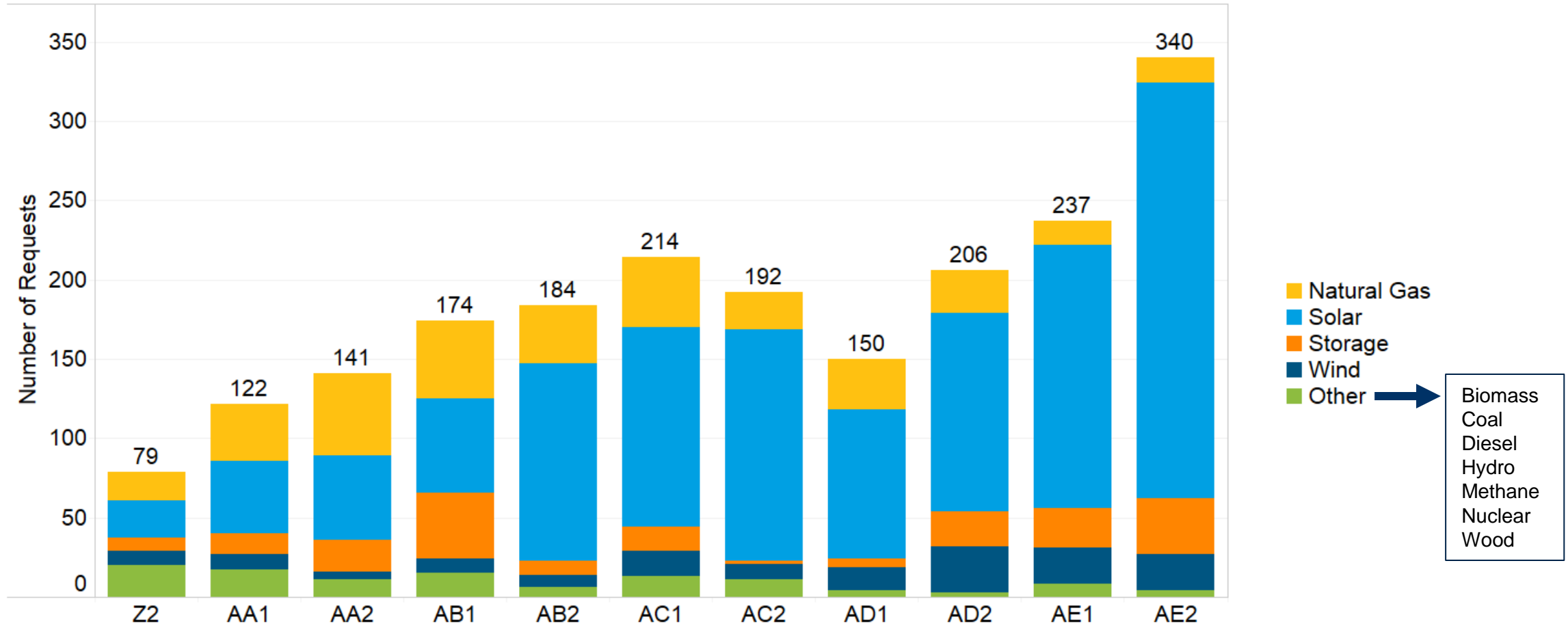
## Total New Service Requests by Application Type



New Service Requests steadily increased over the last 5 years, with a record 346 submitted in Queue AE2

# Recent Queue Trends: Z2 - AE2

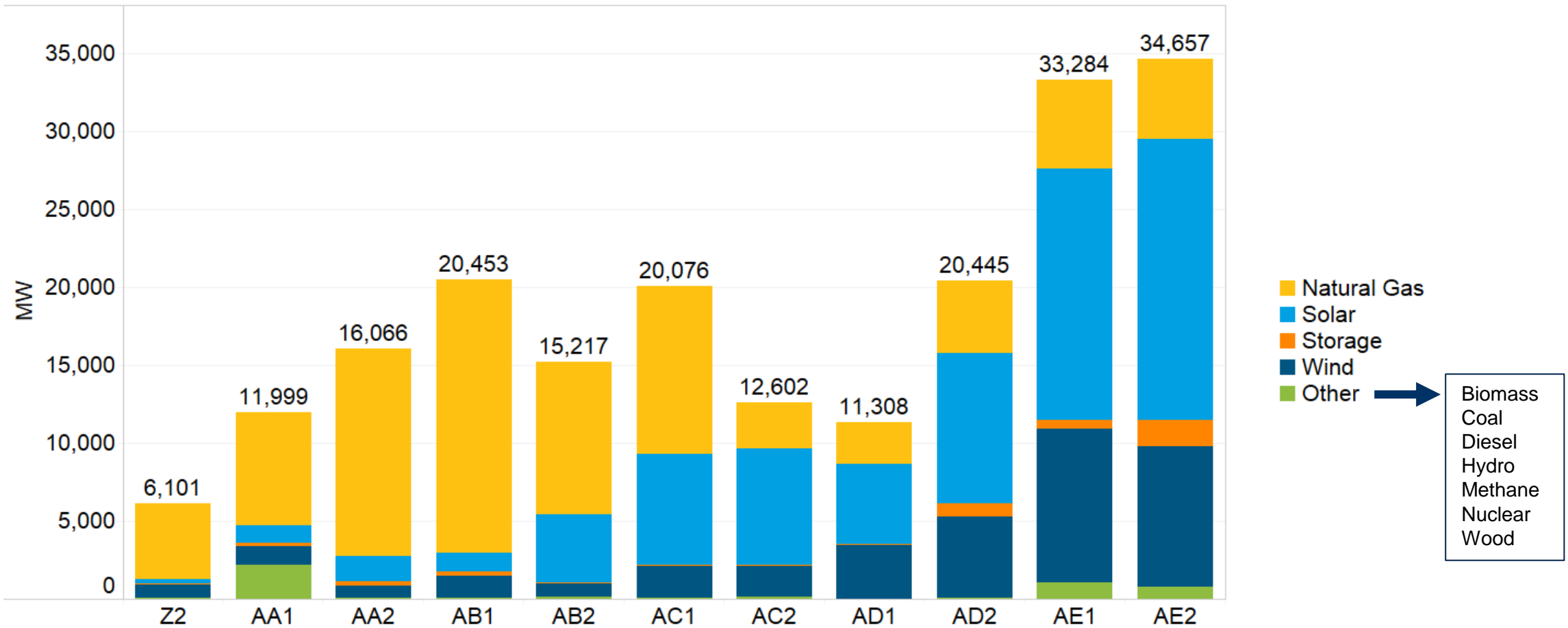
## Generation Interconnection Requests – Total Number



Trend shows shift from mostly Natural Gas Interconnection Requests to Renewables (Solar and Wind). Uptick in Energy Storage

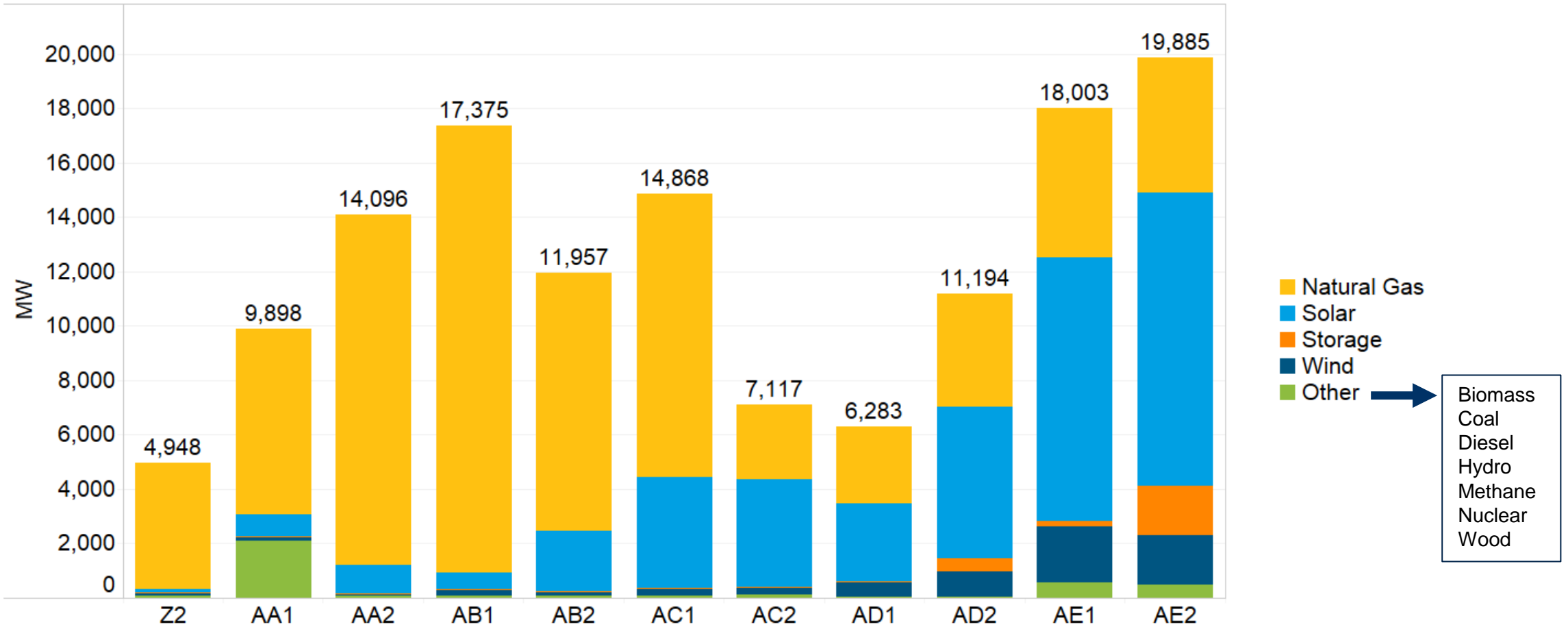
# Recent Queue Trends: Z2 - AE2

## Generation Interconnection Requests – Requested Energy



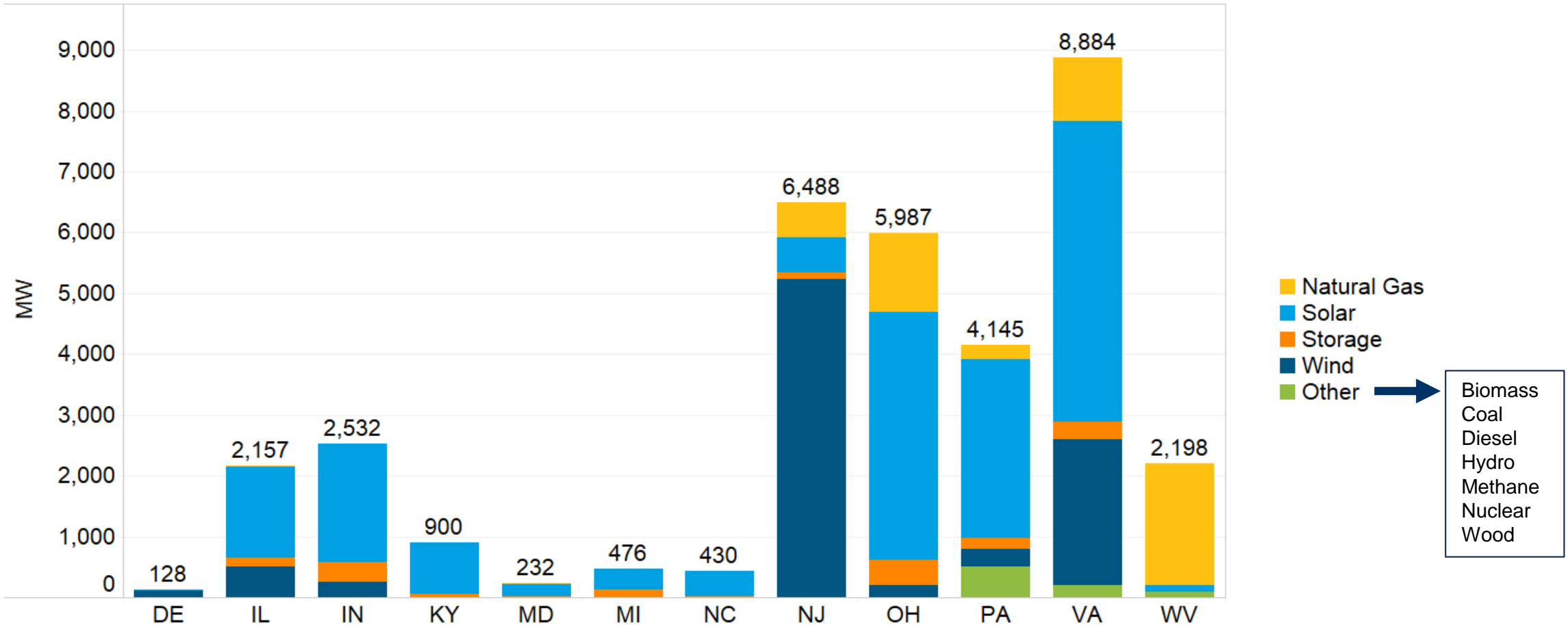
# Recent Queue Trends: Z2 - AE2

## Generation Interconnection Requests – Requested CIRs



# Recent Queue Trends: Z2 - AE2

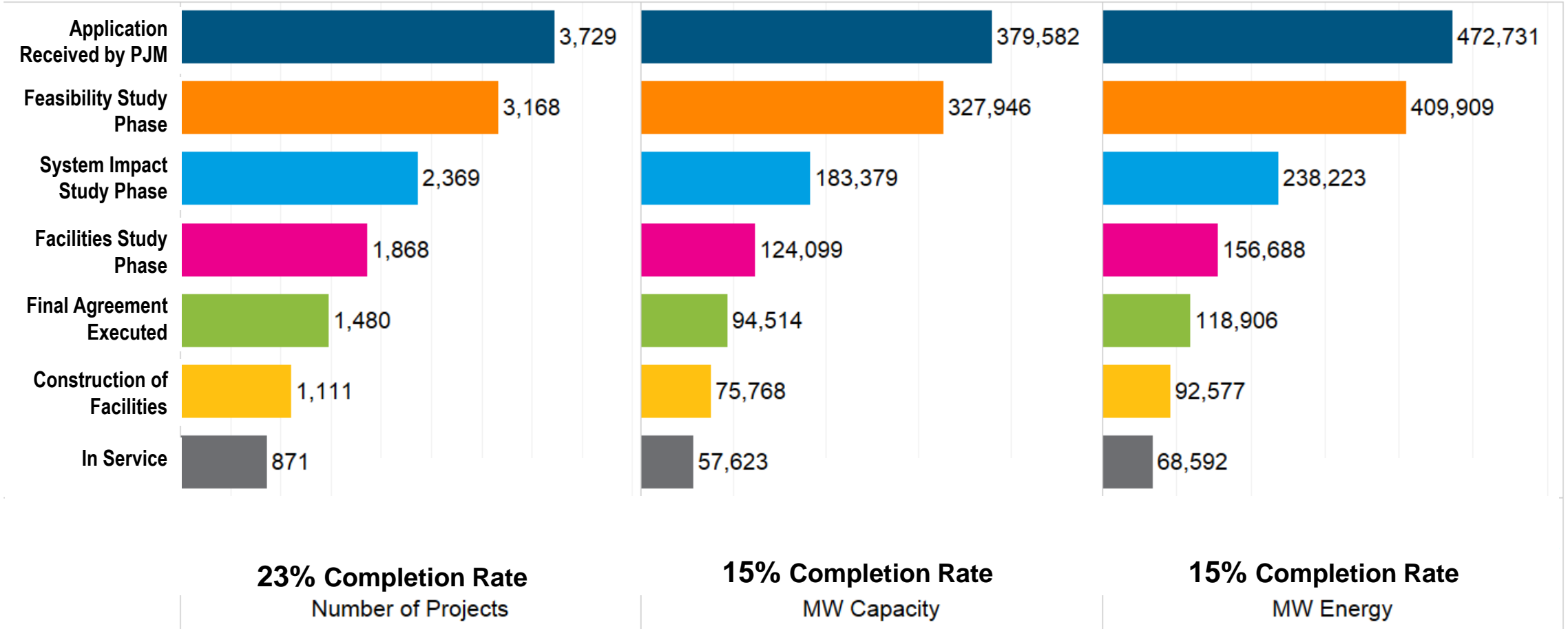
## Generation Interconnection Requests (Queue AE2) by State - Requested Energy



Bulk of Solar project requests are in VA, OH and PA. Bulk of Wind project requests are in NJ and VA (large offshore wind projects)

# Generation Phase Progression: A - AE2 Queues

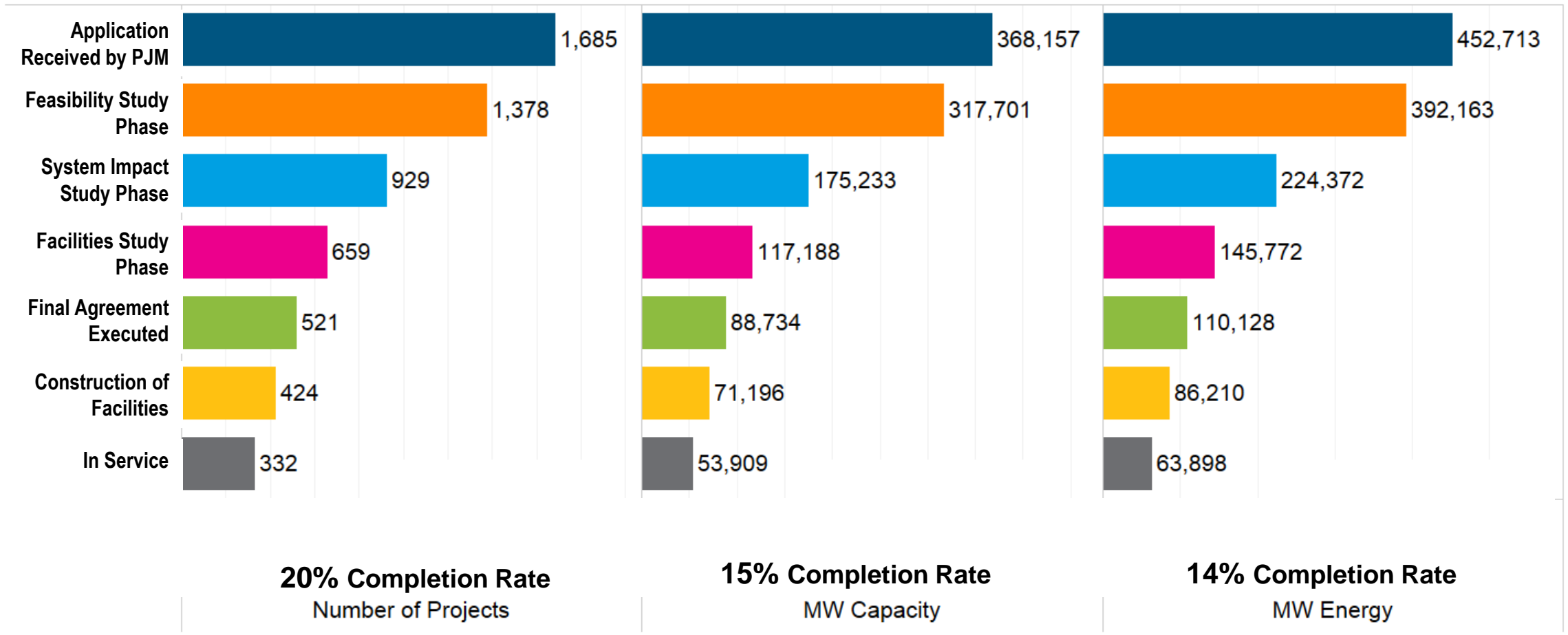




Relatively few Generation Interconnection requests make it to commercial operation from the initial request.

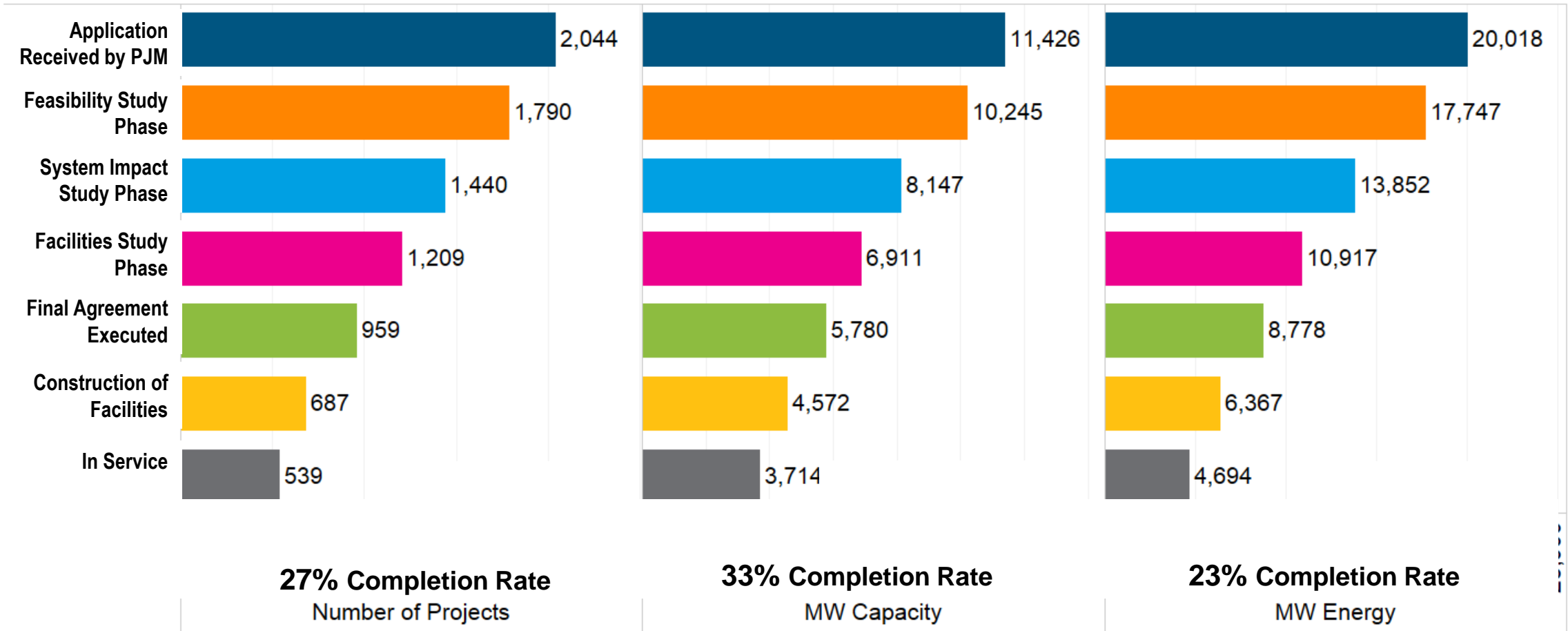
# Generation Phase Progression: A – AE2

## Large Generation Requests (>20 MW)



# Generation Phase Progression: A – AE2

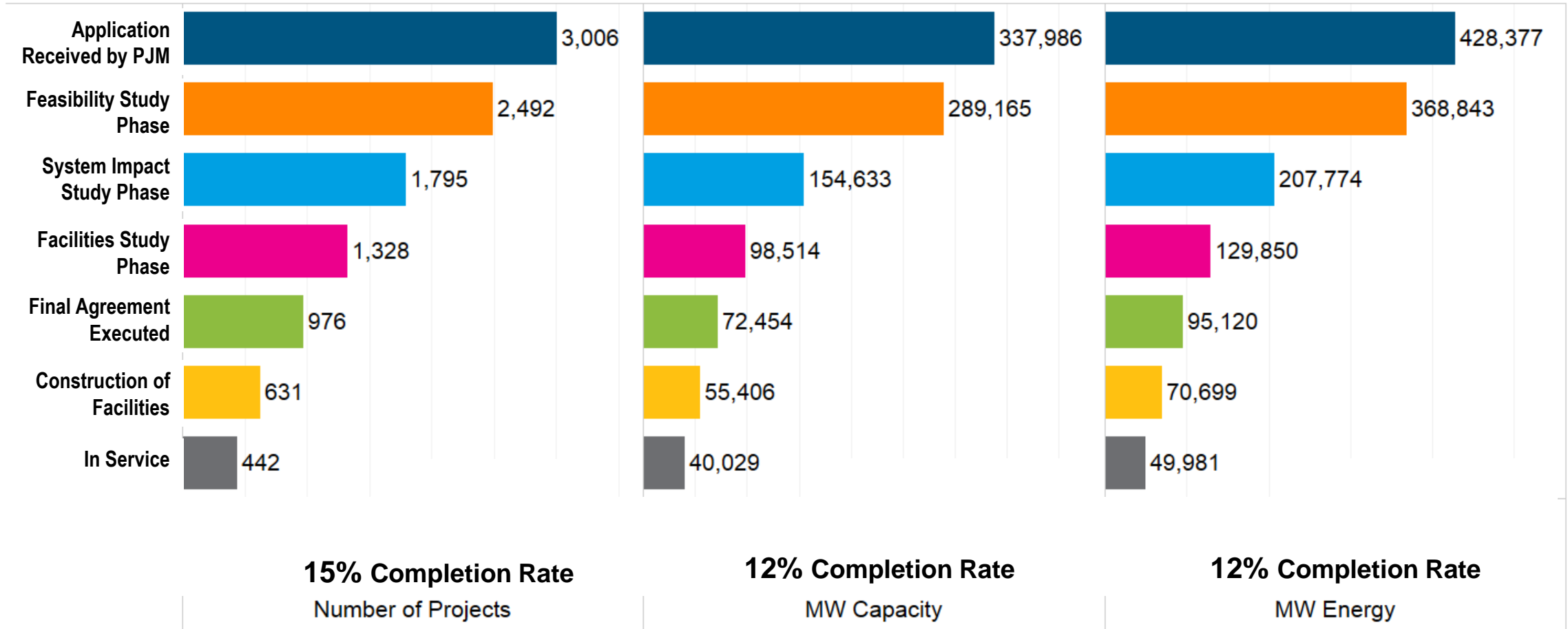
## Small Generation Requests ( $\leq 20$ MW)



More likely that Small Generation Interconnection requests achieve commercial operation

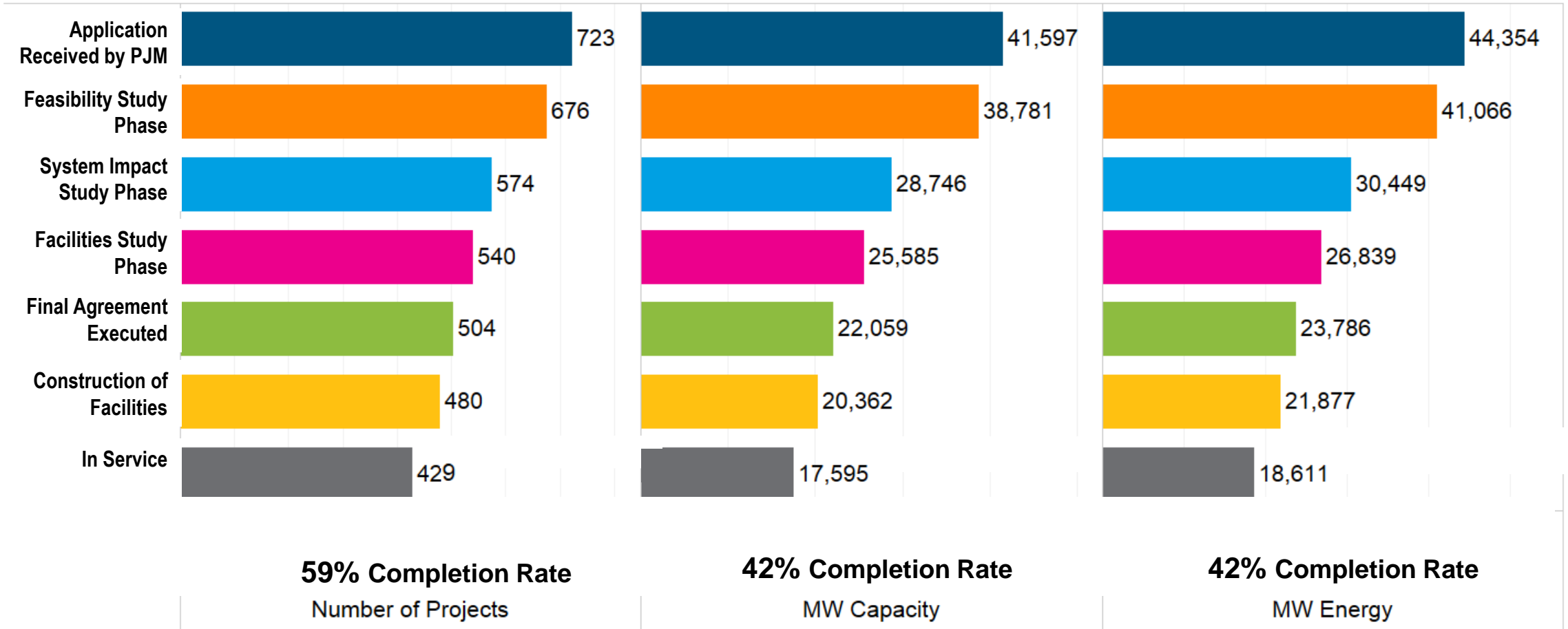
# Generation Phase Progression: A – AE2

## New Facility Generation Requests



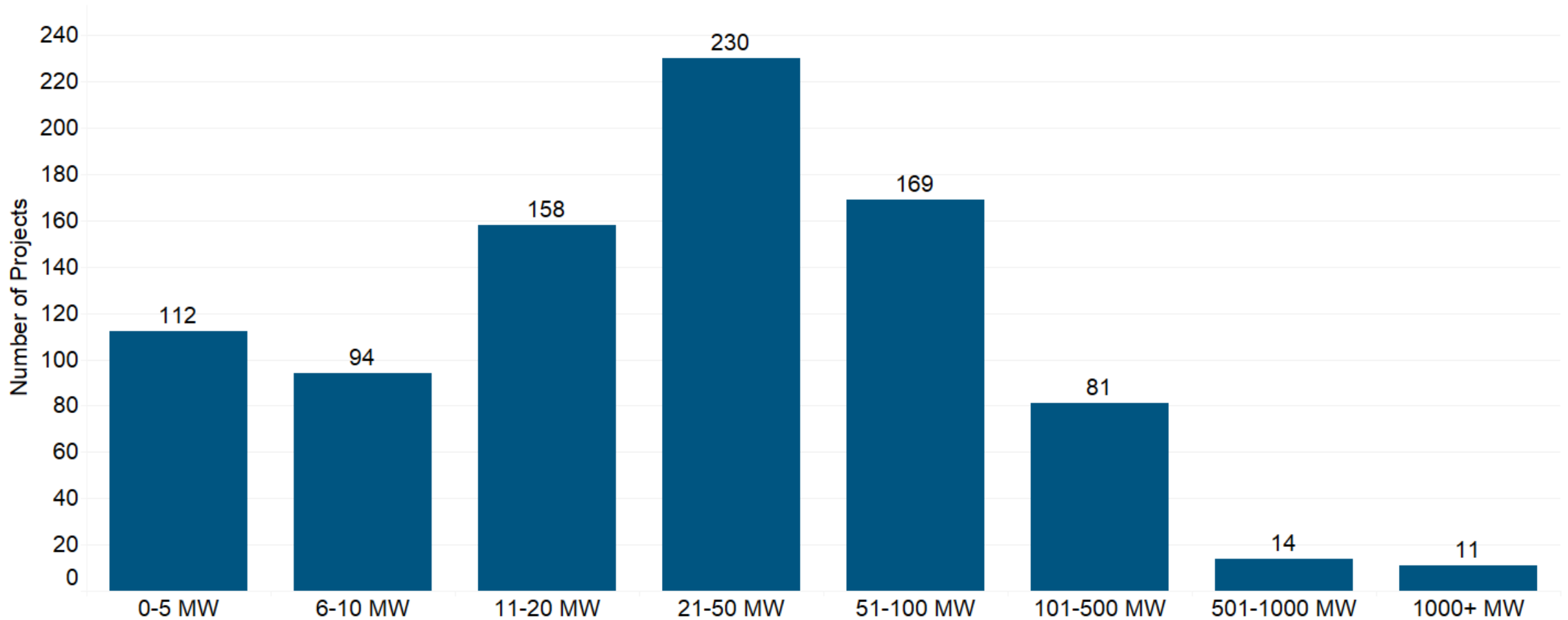
# Generation Phase Progression: A – AE2

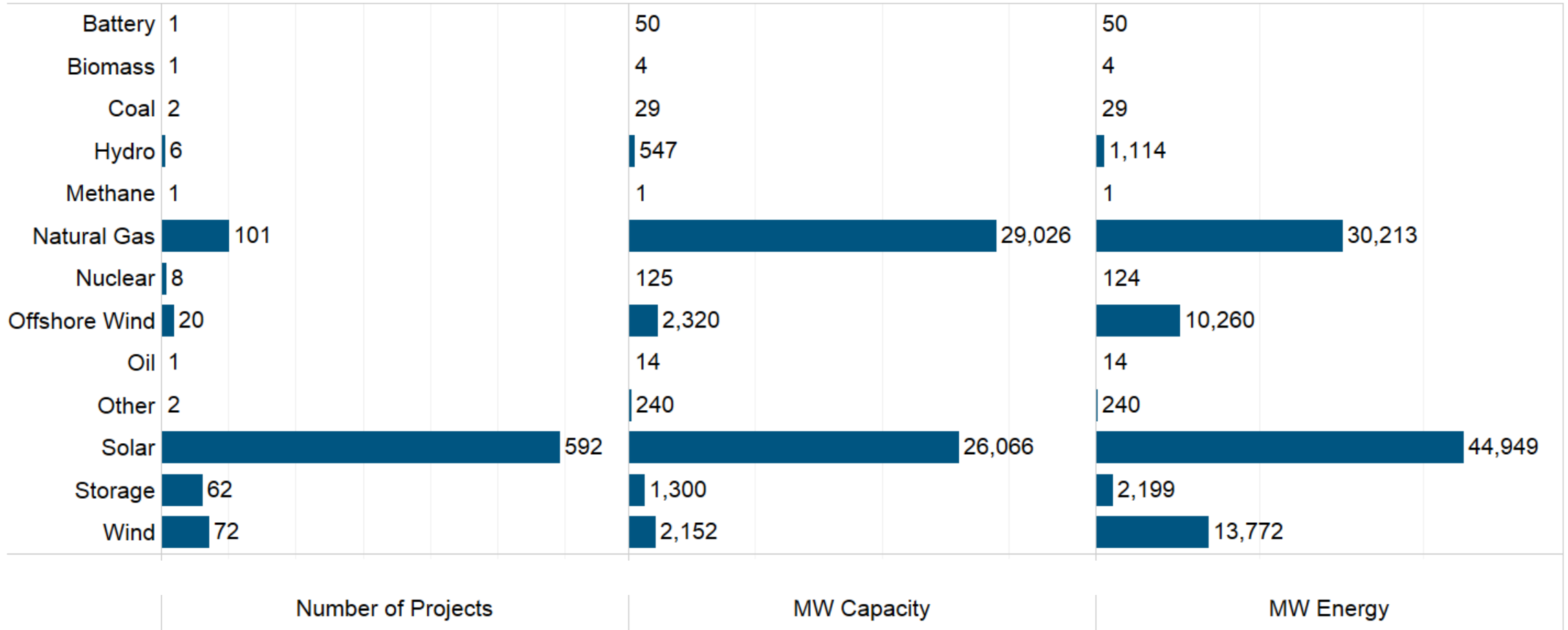
## Uprate Generation Requests



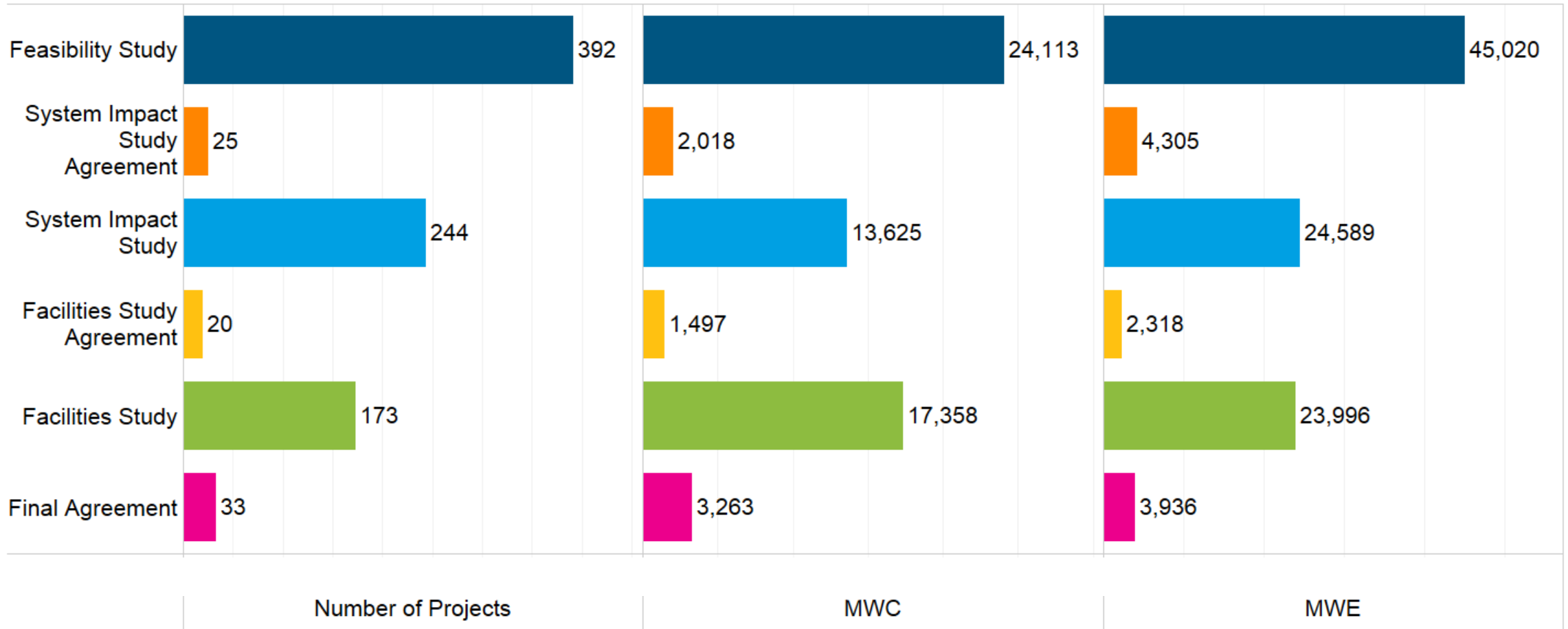
More likely that Uprate Generation Interconnection requests achieve commercial operation

# Appendix









# Active Projects in the Queue Distribution by Transmission Owner Zone

