



System Operations Report

Marcus Smith, Lead Engineer –
Markets Coordination

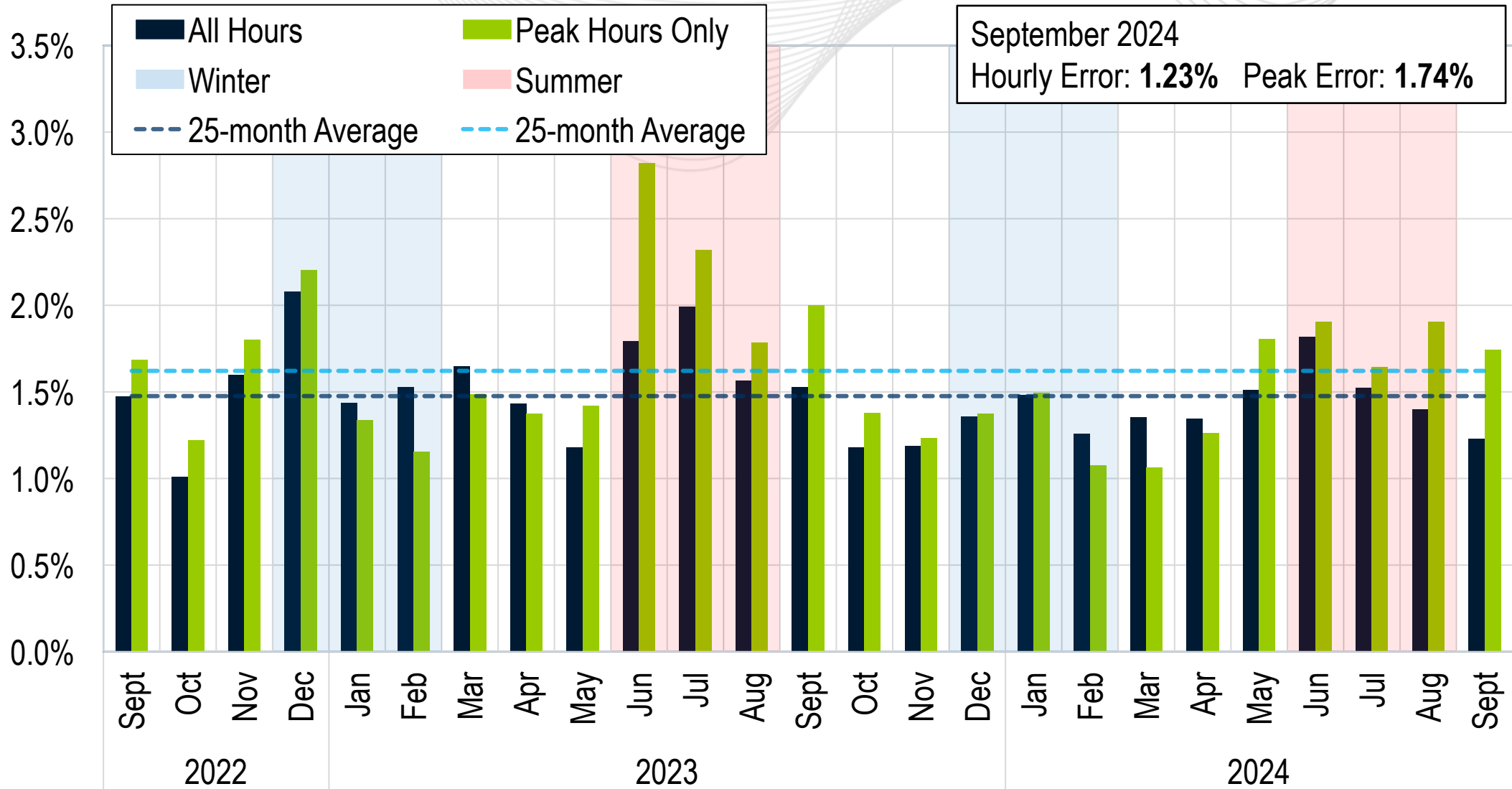
Jennifer Freeman, Lead Economist –
Performance Compliance

Operating Committee

October 10, 2024

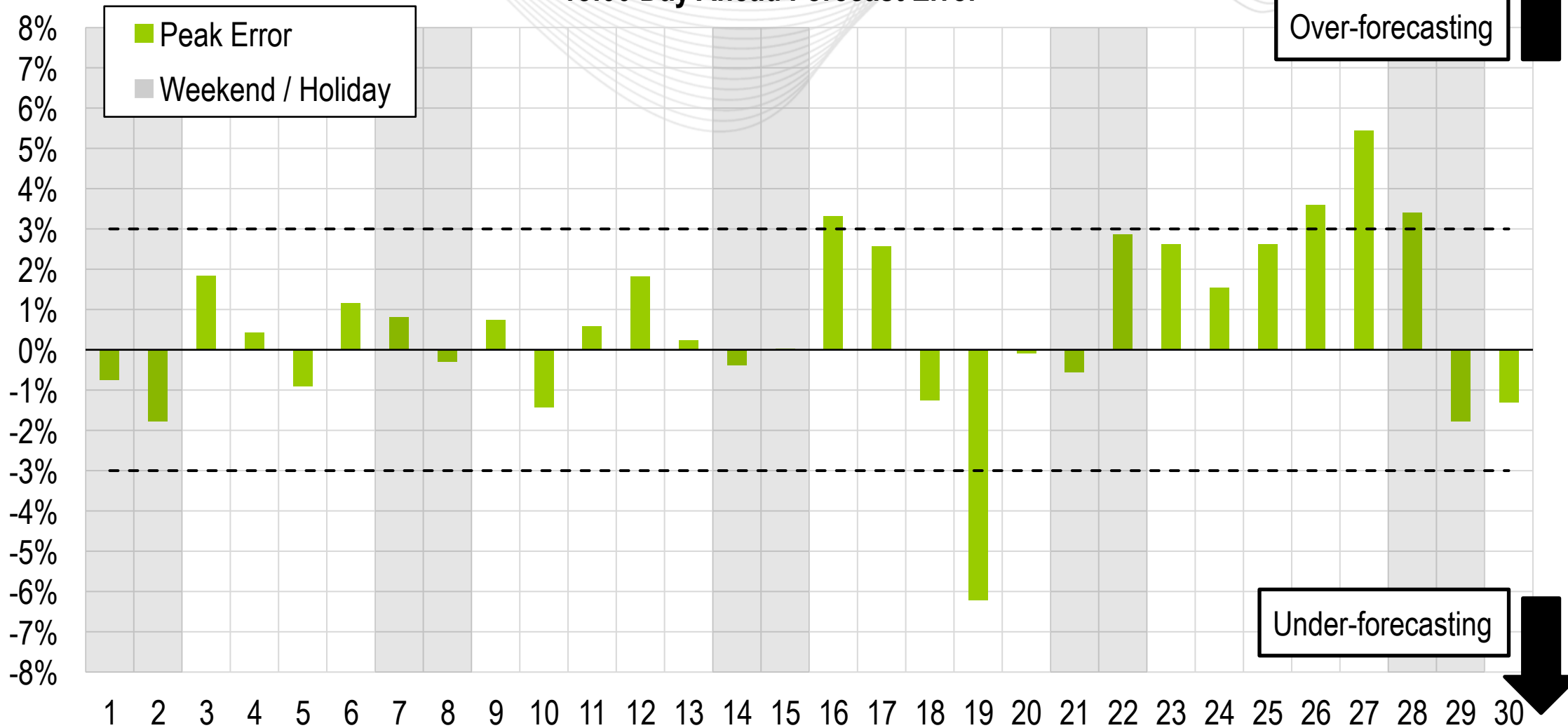


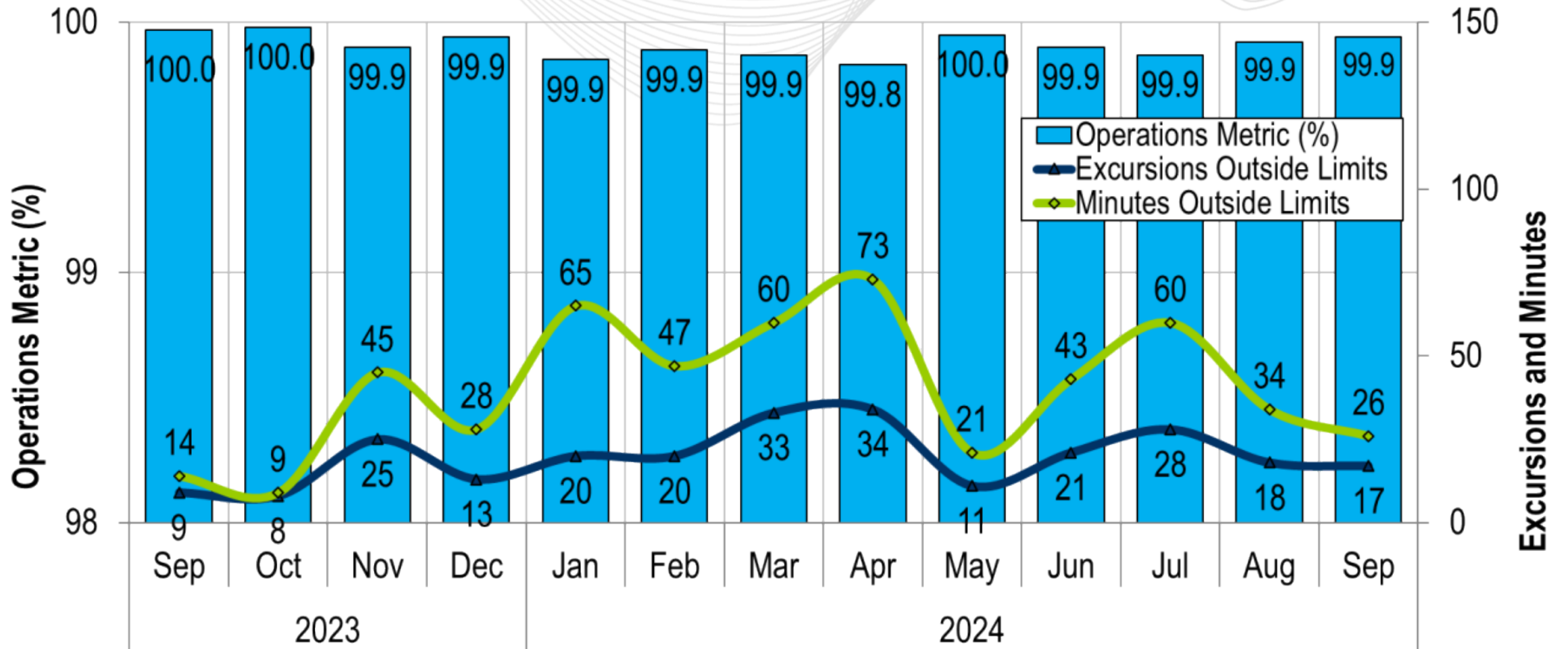
Average Load Forecast Error



Daily Peak Forecast Error (September)

18:00 Day Ahead Forecast Error

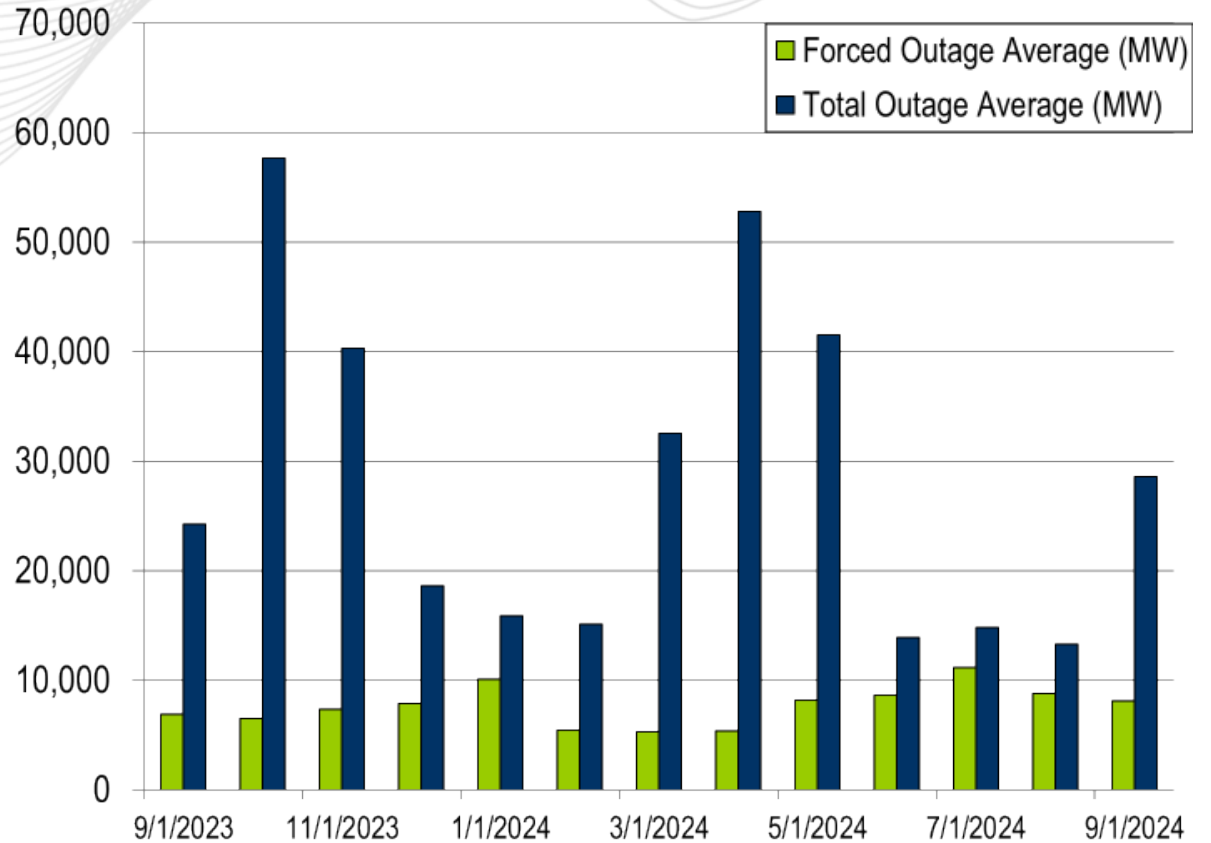
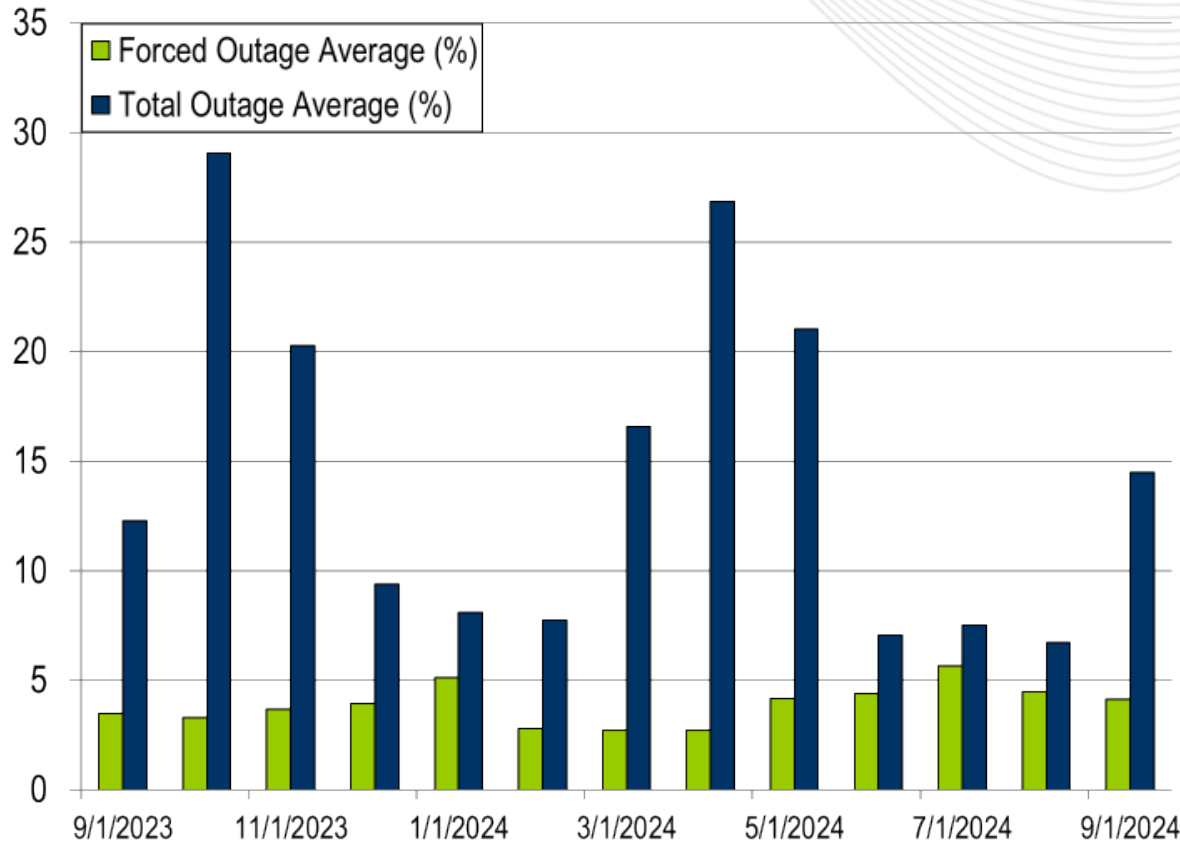




PJM's BAAL performance has exceeded the goal of 99% for each month in 2023 and 2024.

- The following Emergency Procedures occurred:
 - 1 Shared Reserve events
 - 1 High System Voltage Action
 - 2 Geomagnetic Disturbance Warnings
 - 32 Post Contingency Local Load Relief Warnings (PCLLRWs)

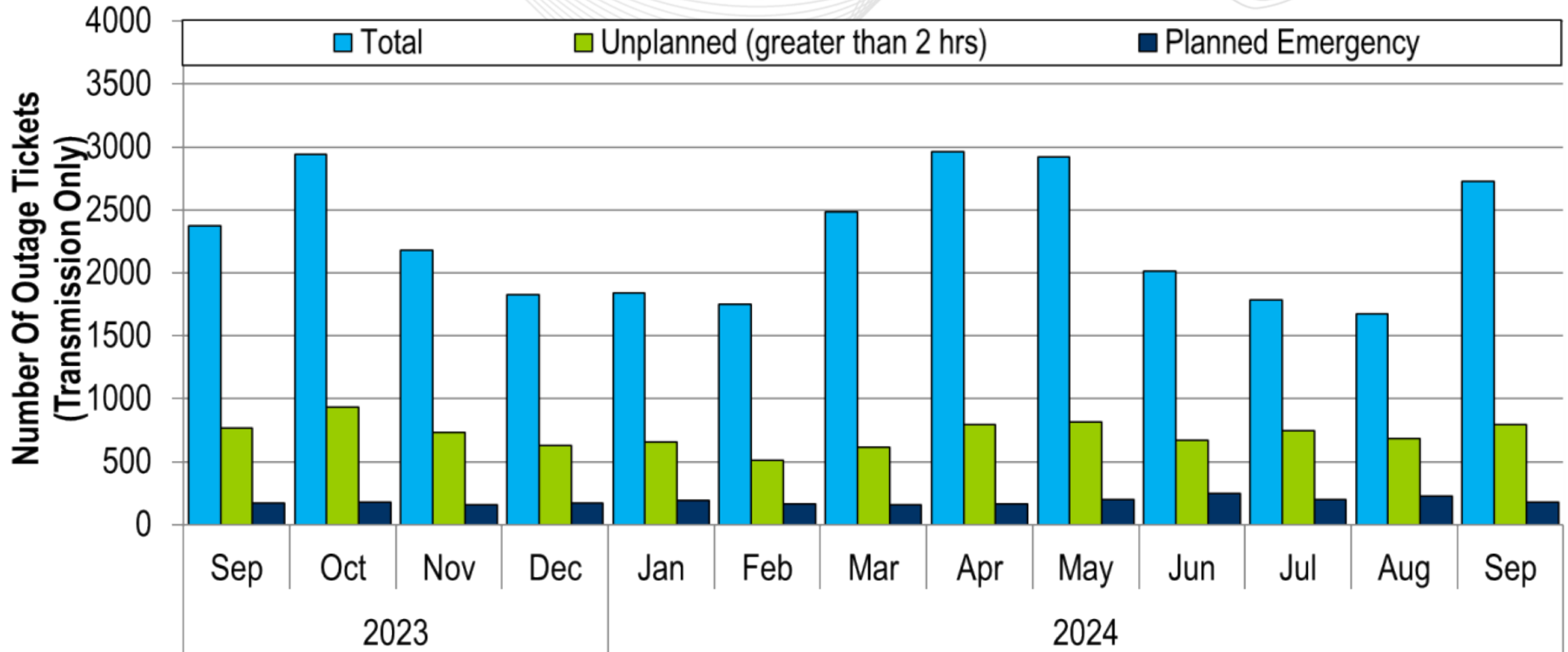
- 2 Shortage Cases Approved
- The approved Shortage Cases occurred on:
 - 09/04/2024:
 - 2 shortage cases approved for the 06:35 and 06:40 intervals
 - Factors: Increase in Load and Reduction of Dispatchable Generation



The 13-month average forced outage rate is 3.91% or 7,718 MW.
 The 13-month average total outage rate is 14.40% or 28,406 MW.

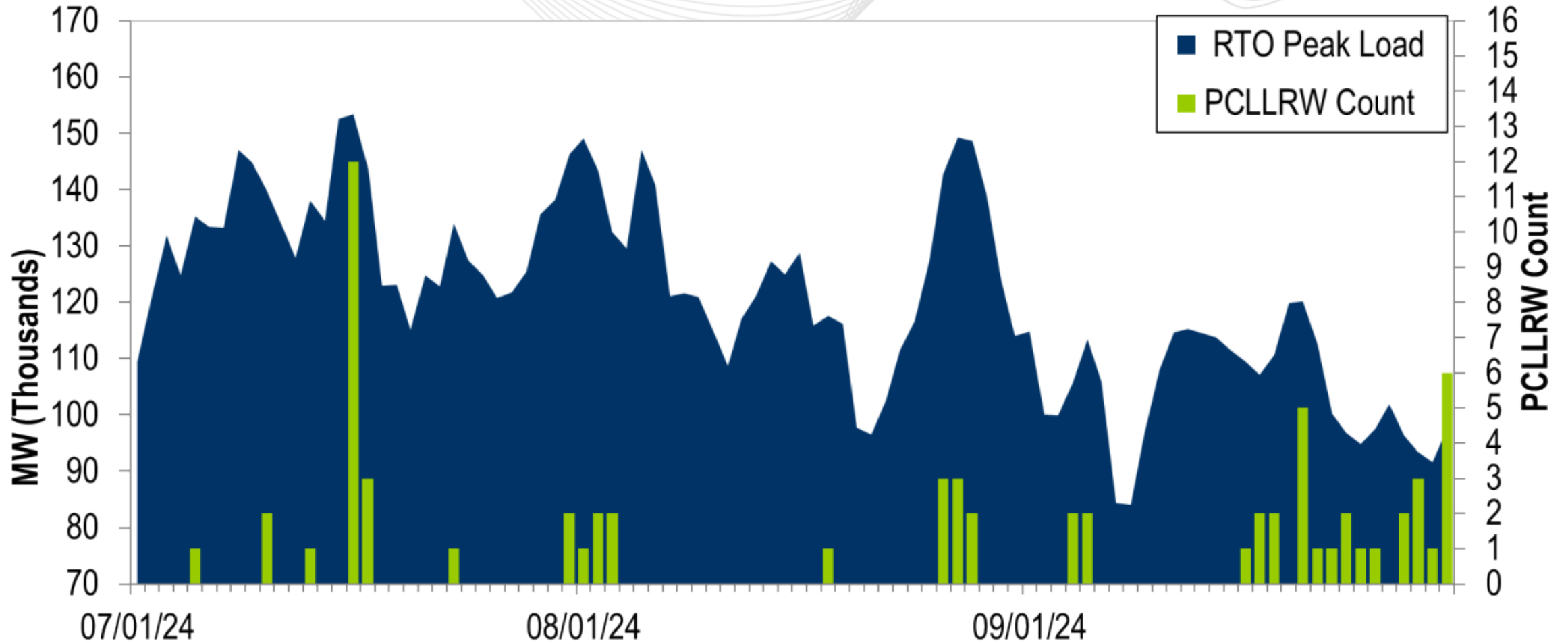


2023-2024 Planned Emergency, Unplanned, and Total Outages by Ticket (Transmission Only)



Note: "Unplanned Outages" include tripped facilities. One tripping event may involve multiple facilities.

PCLLRW Count Vs. Peak Load – Daily Values For 3 Months



- There were no Spin Events for the month of September 2024

Load Forecast Report

Presenter/SME:

Marcus Smith,
Marcus.Smith@pjm.com

System Operations Report

Presenter:

Jennifer Freeman,
Jennifer.Freeman@pjm.com

SME:

Ross Kelly,
Ross.Kelly@pjm.com



Member Hotline

(610) 666 – 8980

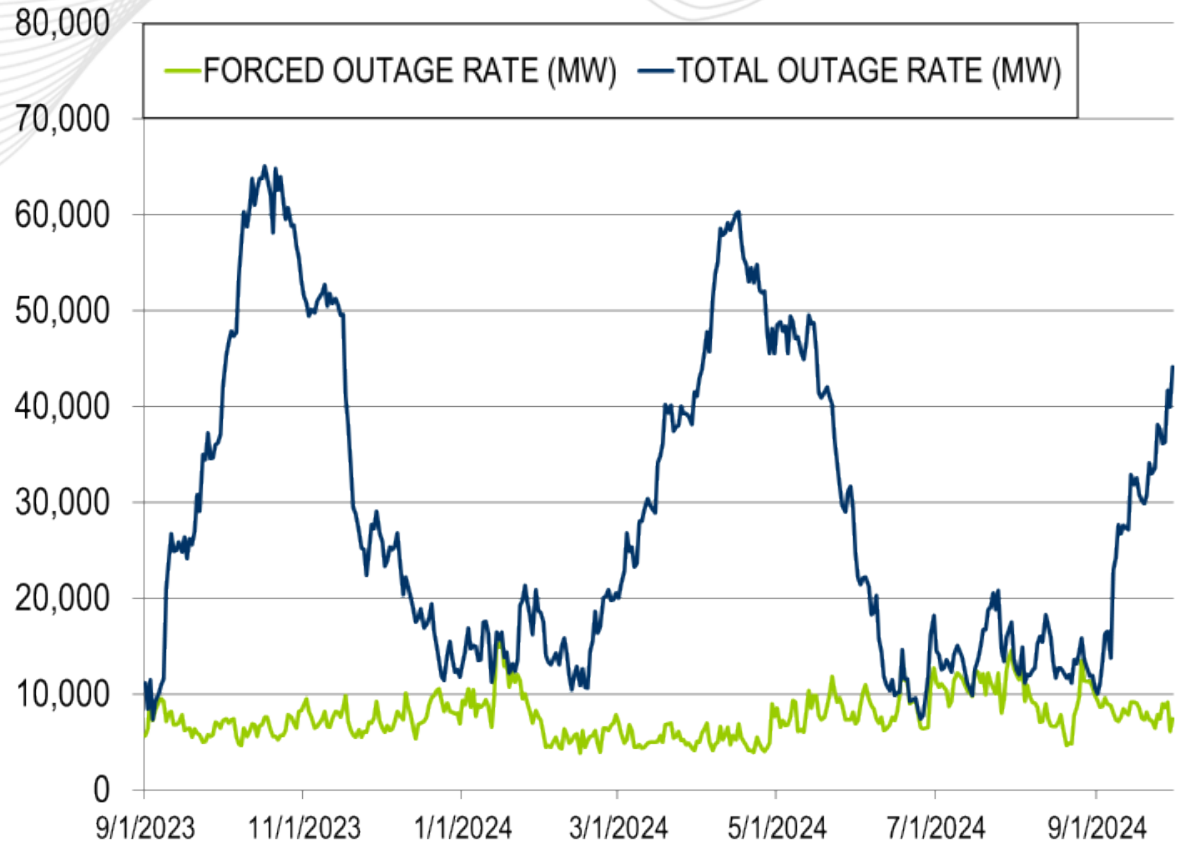
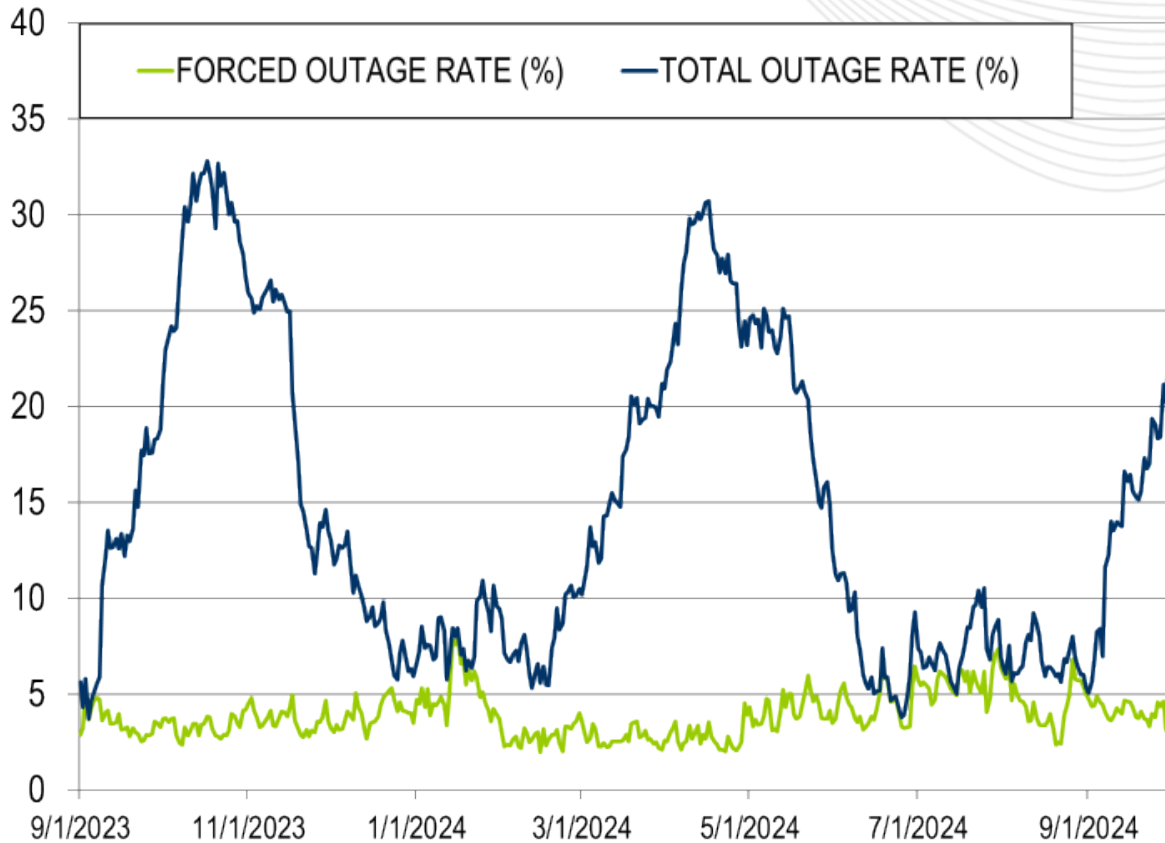
(866) 400 – 8980

custsvc@pjm.com

Appendix

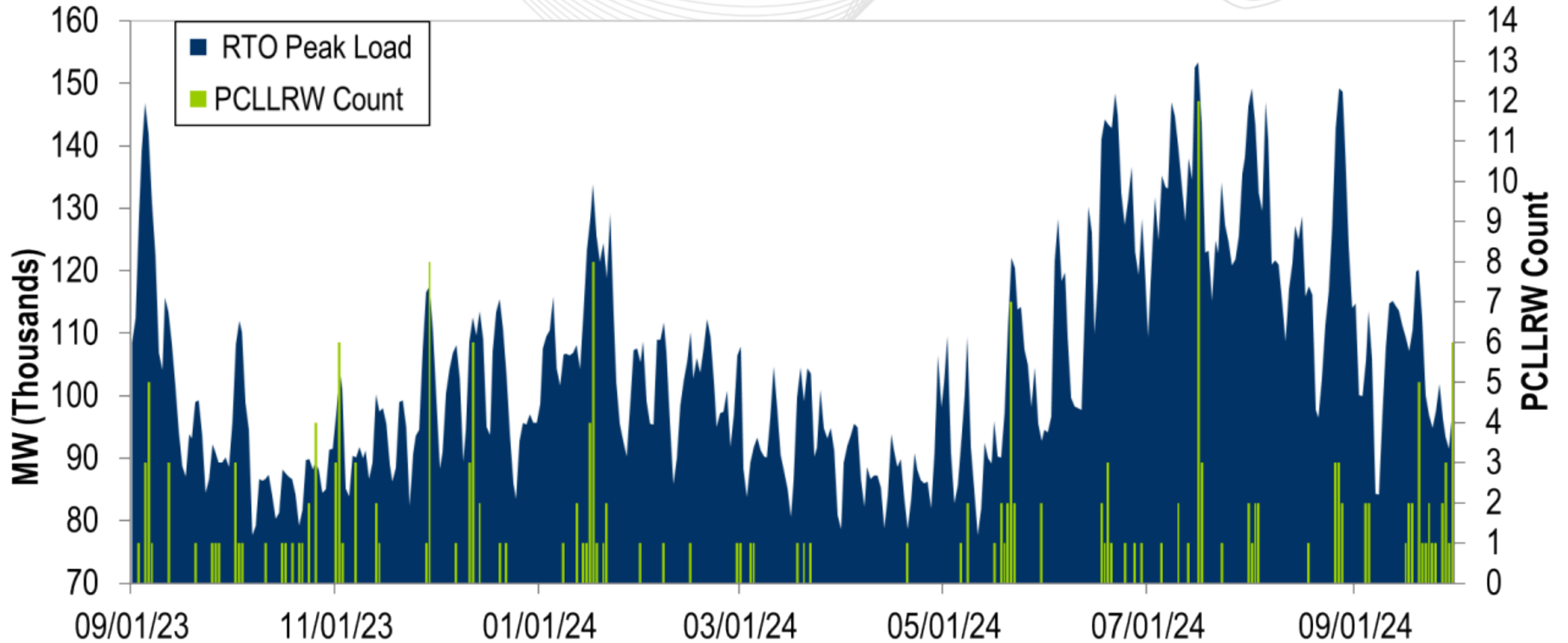
Goal Measurement: Balancing Authority ACE Limit (BAAL)

- The purpose of the new BAAL standard is to maintain interconnection frequency within a predefined frequency profile under all conditions (normal and abnormal), to prevent frequency-related instability, unplanned tripping of load or generation, or uncontrolled separation or cascading outages that adversely impact the reliability of the interconnection. NERC requires each balancing authority demonstrate real-time monitoring of ACE and interconnection frequency against associated limits and shall balance its resources and demands in real time so that its Reporting ACE does not exceed the BAAL ($BAAL_{LOW}$ or $BAAL_{HIGH}$) for a continuous time period greater than 30 minutes for each event.
- PJM directly measures the total number of BAAL excursions in minutes compared to the total number of minutes within a month. PJM has set a target value for this performance goal at 99% on a daily and monthly basis. In addition, current NERC rules limit the recovery period to no more than 30 minutes for a single event.



The 13-month average forced outage rate is 3.91% or 7,718 MW.
 The 13-month average total outage rate is 14.40% or 28,406 MW.

PCLLRW Count Vs. Peak Load – Daily Values For 13 Months



**PROTECT THE
POWER GRID
THINK BEFORE
YOU CLICK!**



Be alert to
malicious
phishing emails.

Report suspicious email activity to PJM.
(610) 666-2244 / it_ops_ctr_shift@pjm.com

