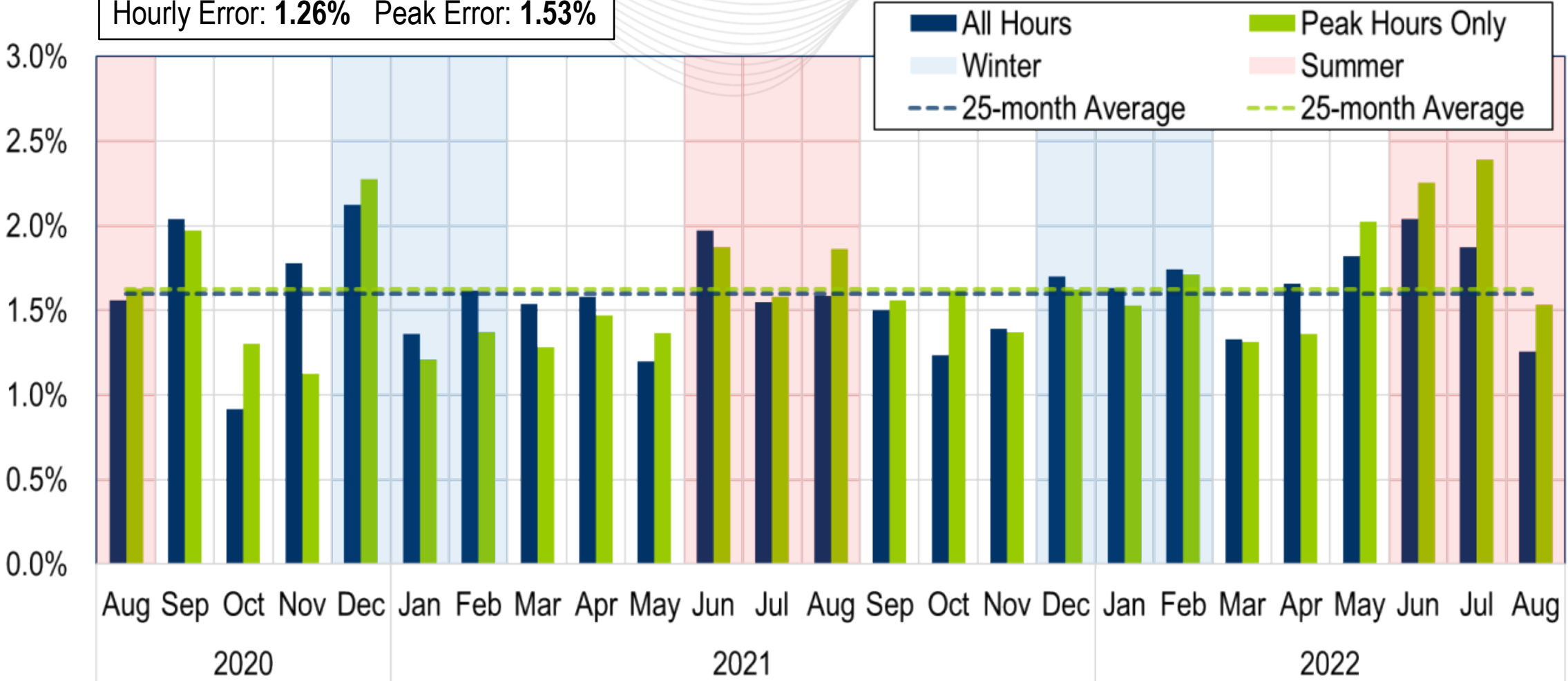




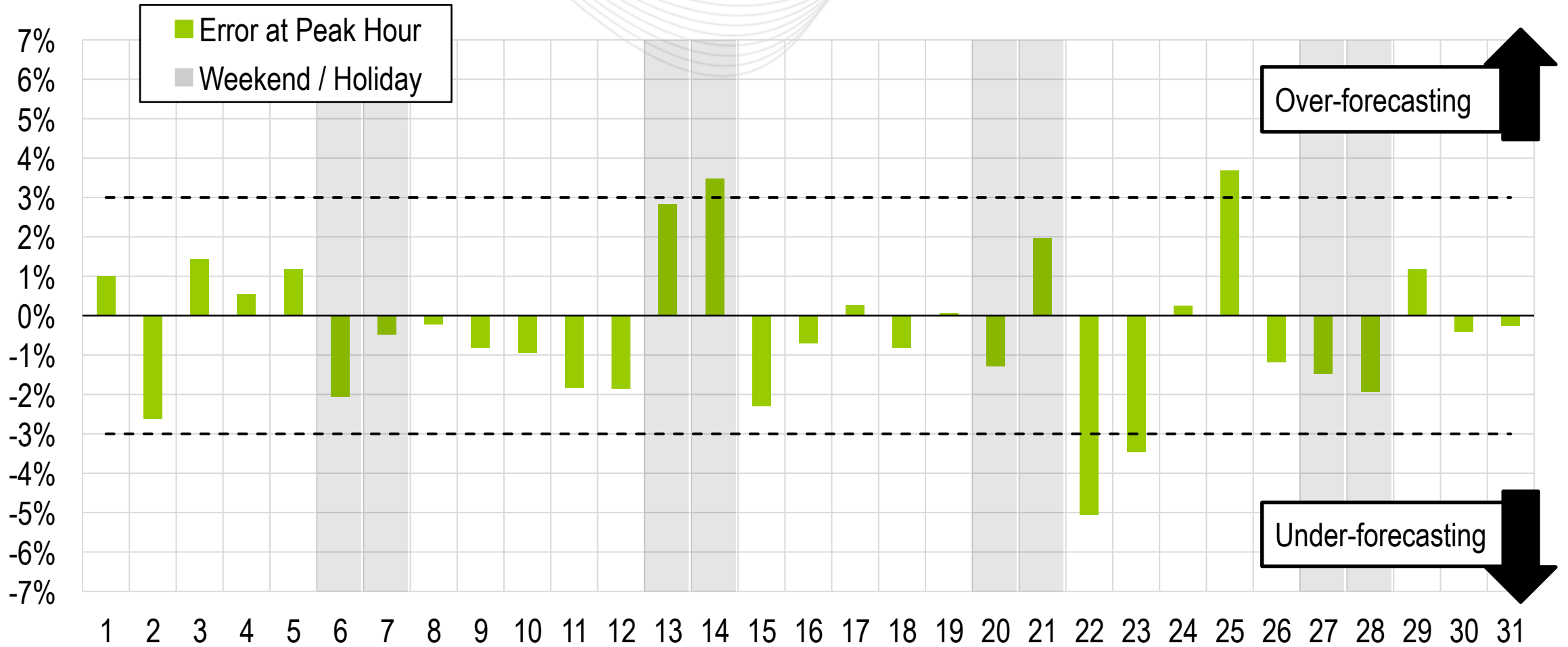
System Operations Report

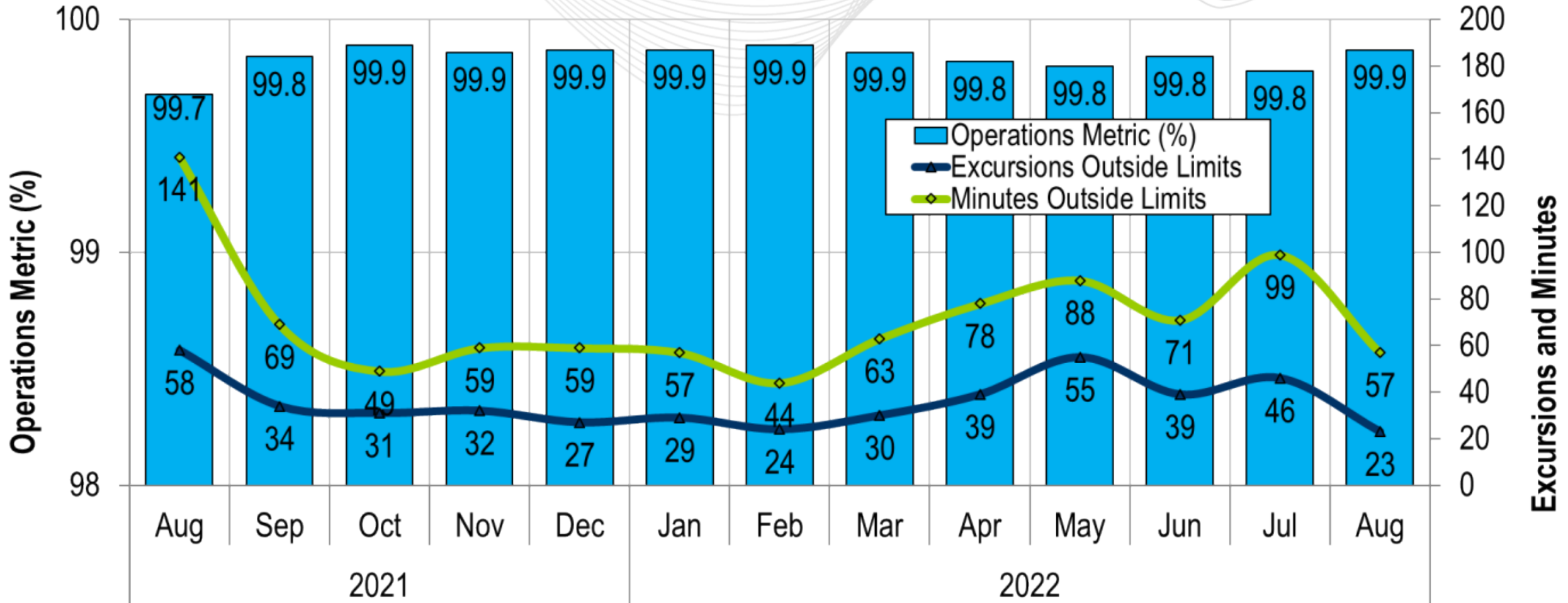
Stephanie Schwarz
Manager, Markets Coordination
Operating Committee
September 8th, 2022

August 2022
 Hourly Error: **1.26%** Peak Error: **1.53%**



Daily Peak Forecast Error (August)

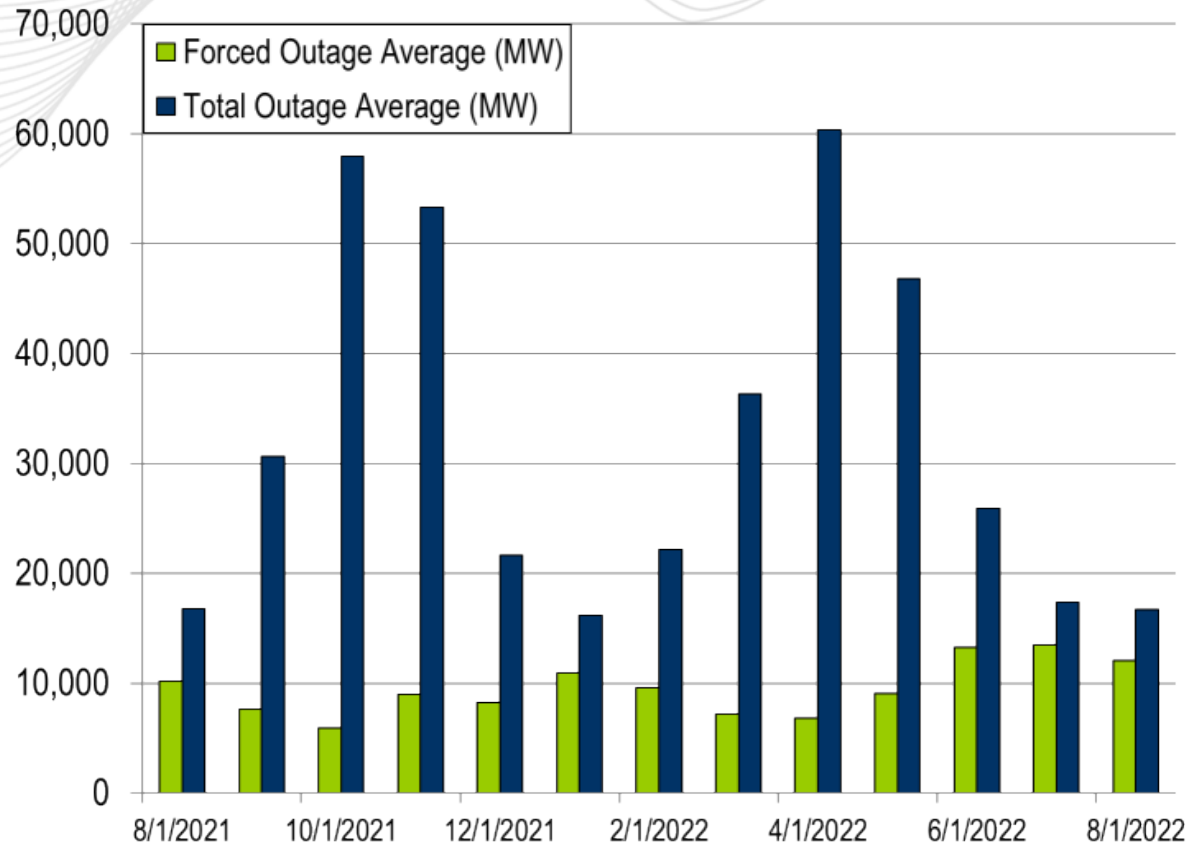
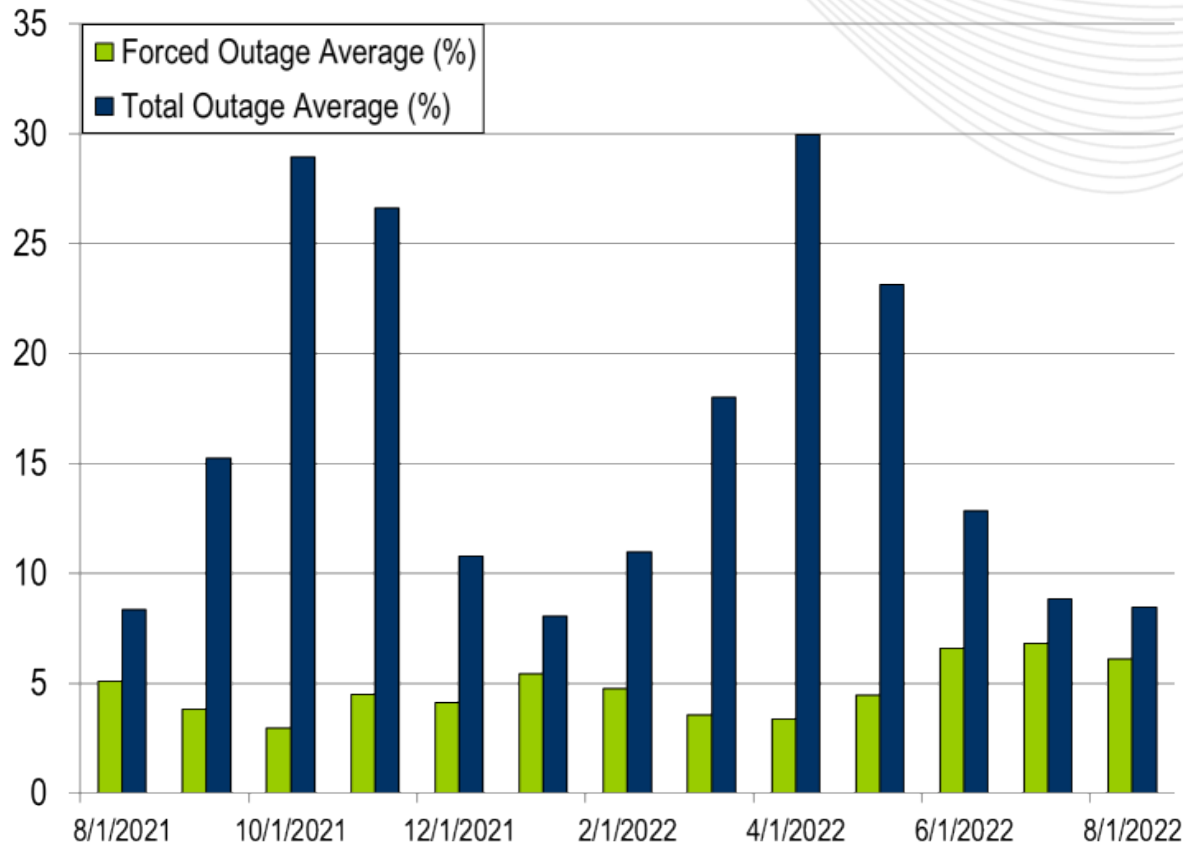




PJM's BAAL performance has exceeded the goal of 99% for each month in 2022.

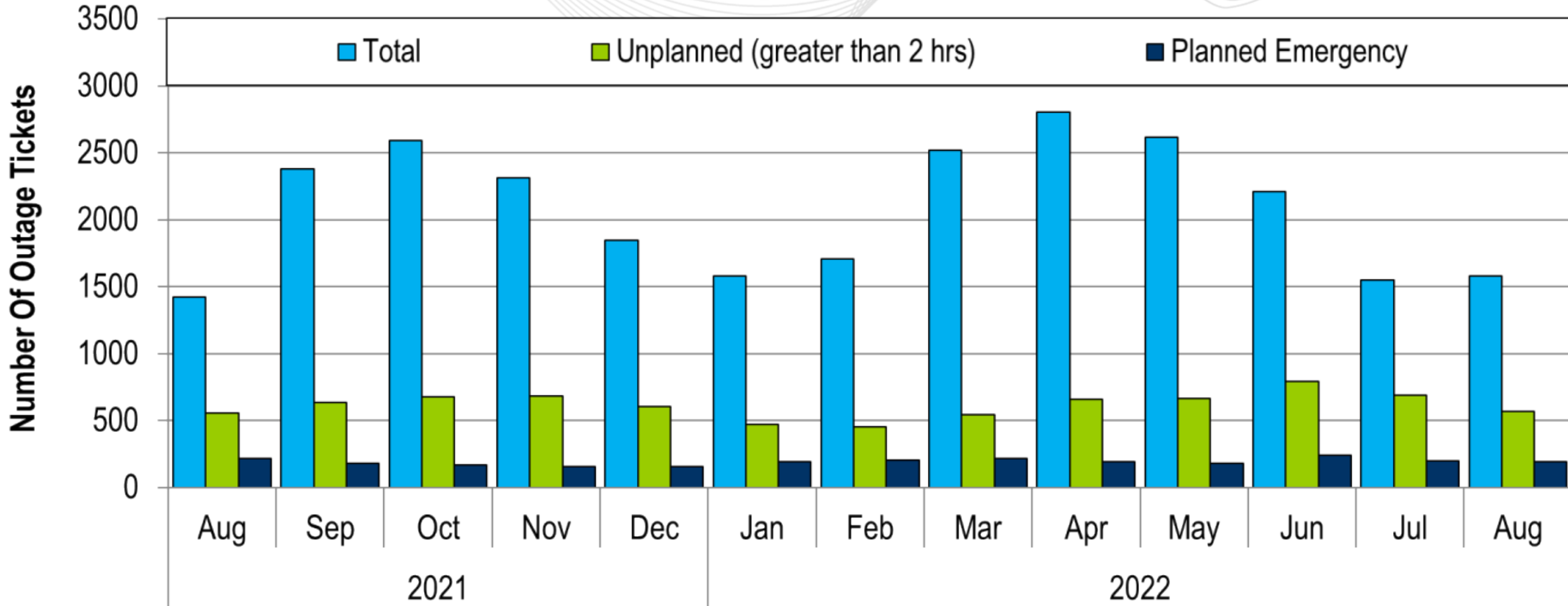
- Four reserve sharing event with the Northeast Power Coordinating Council (NPCC)
- The following Emergency Procedures occurred:
 - 7 Hot Weather Alerts
 - 1 Geomagnetic Disturbance Warning
 - 34 Post-Contingency Local Load Relief Warnings (PCLLRW)

- No Shortage Cases were approved in August 2022



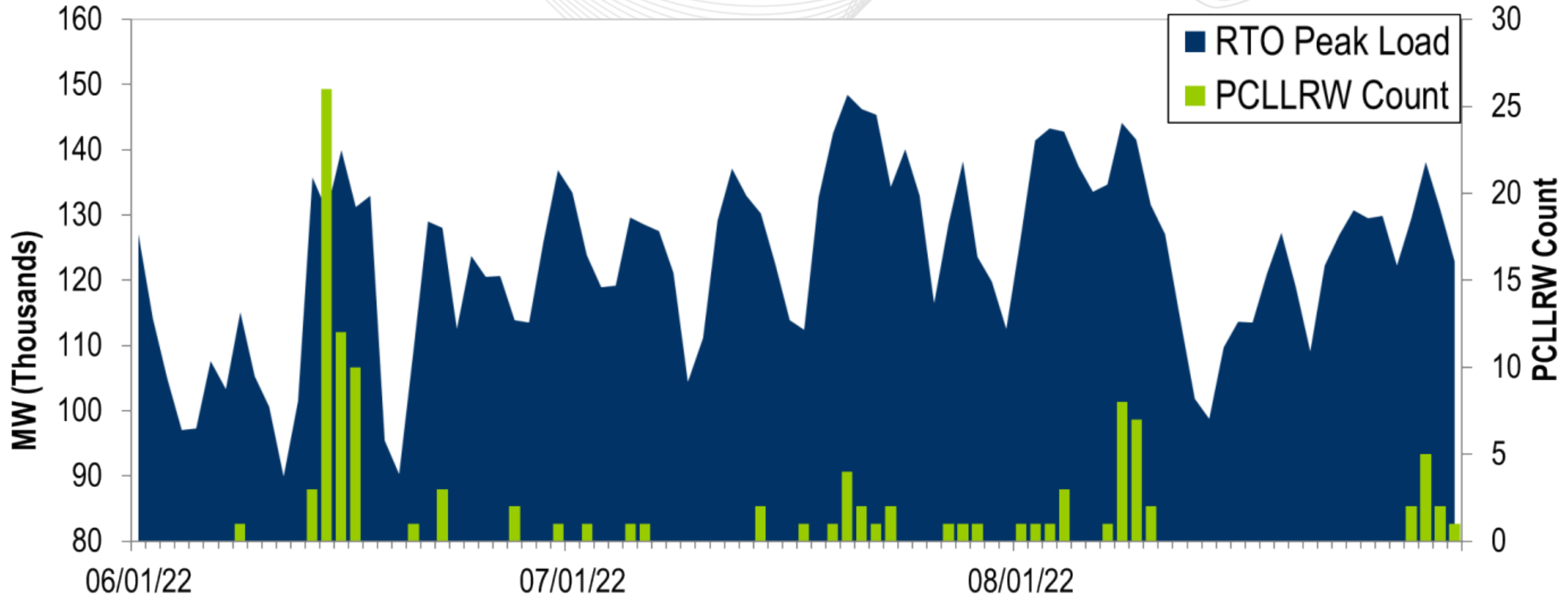
The 13-month average forced outage rate is 4.74% or 9,496 MW.
 The 13-month average total outage rate is 16.16% or 32,464 MW.

2021-2022 Planned Emergency, Unplanned, and Total Outages by Ticket



Note: "Unplanned Outages" include tripped facilities. One tripping event may involve multiple facilities.

PCLLRW Count Vs. Peak Load – Daily Values For 3 Months



- No Spin Events occurred in August 2022

*Tier 2 Response is equal to Tier 2 Assigned for events with duration less than ten minutes

Presenter:
Stephanie Schwarz,
Stephanie.Schwarz@pjm.com

SME:
Ross Kelly,
Ross.Kelly@pjm.com

System Operations Report



Member Hotline

(610) 666 – 8980

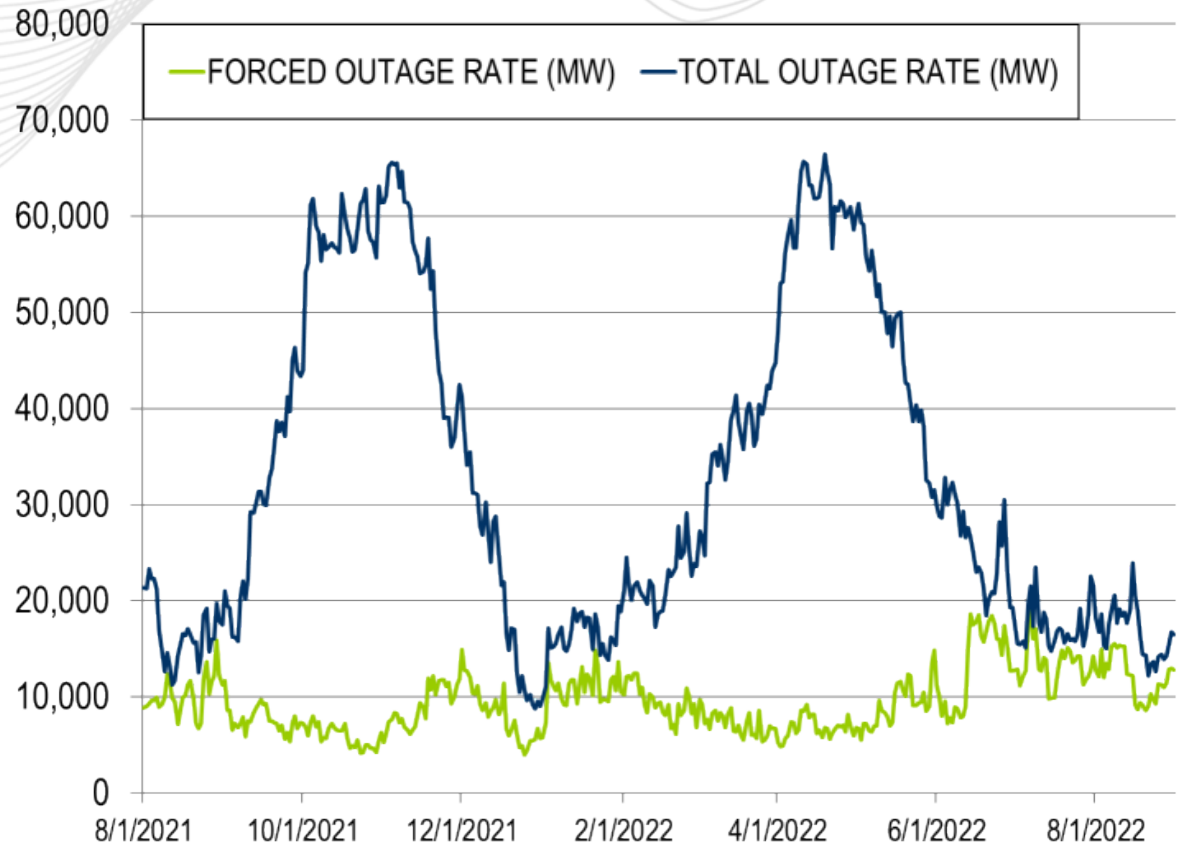
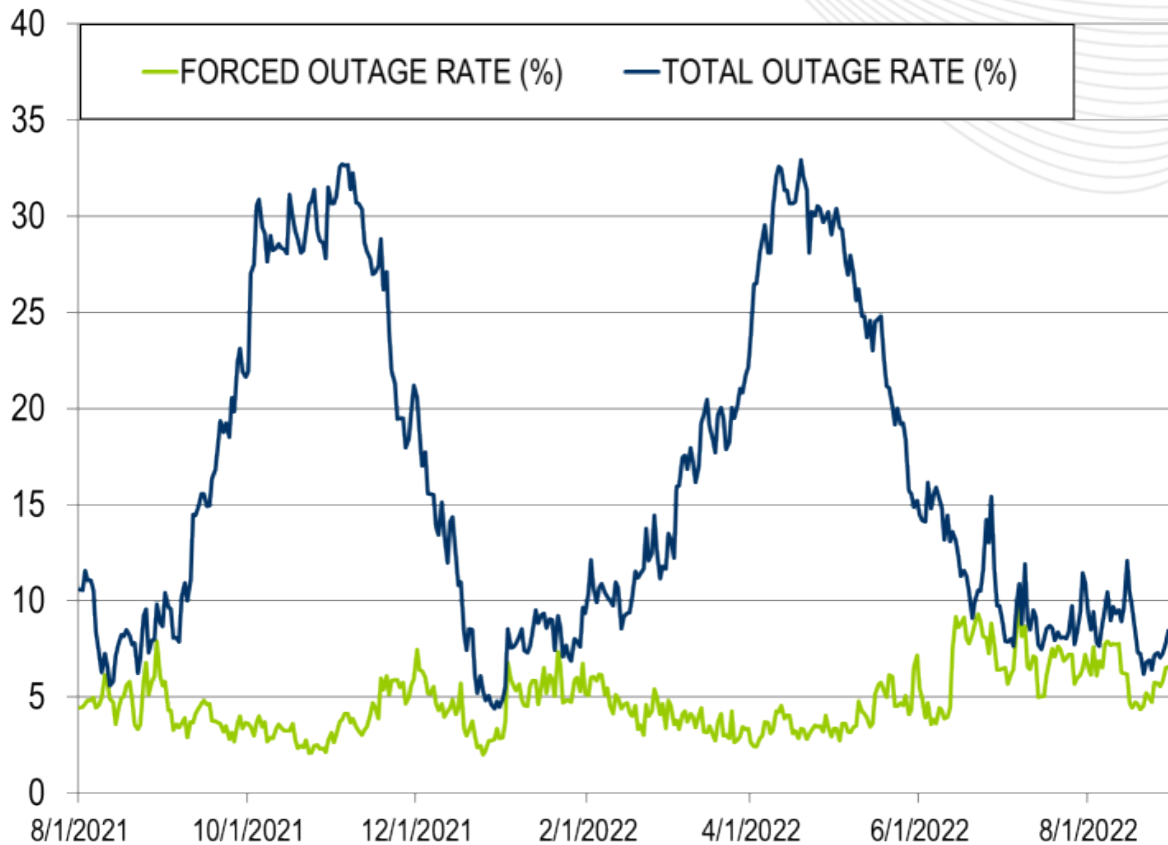
(866) 400 – 8980

custsvc@pjm.com

Appendix

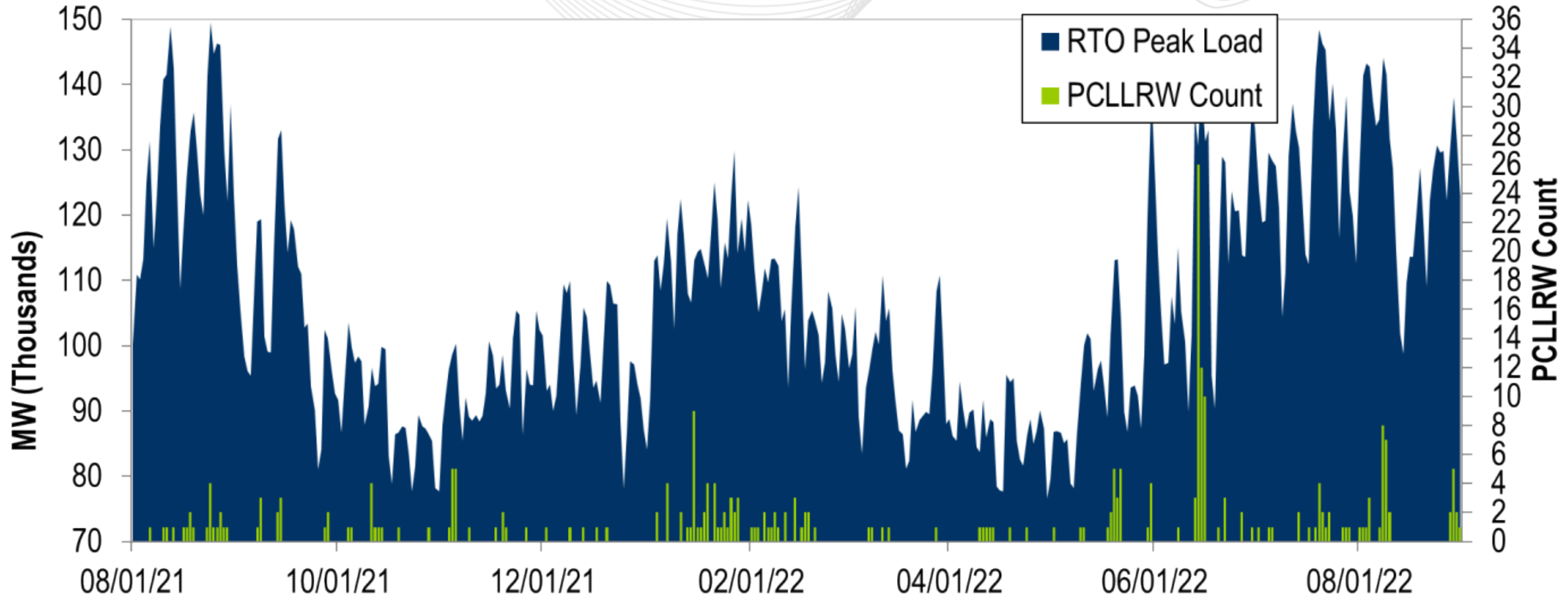
Goal Measurement: Balancing Authority ACE Limit (BAAL)

- The purpose of the new BAAL standard is to maintain interconnection frequency within a predefined frequency profile under all conditions (normal and abnormal), to prevent frequency-related instability, unplanned tripping of load or generation, or uncontrolled separation or cascading outages that adversely impact the reliability of the interconnection. NERC requires each balancing authority demonstrate real-time monitoring of ACE and interconnection frequency against associated limits and shall balance its resources and demands in real time so that its Reporting ACE does not exceed the BAAL ($BAAL_{LOW}$ or $BAAL_{HIGH}$) for a continuous time period greater than 30 minutes for each event.
- PJM directly measures the total number of BAAL excursions in minutes compared to the total number of minutes within a month. PJM has set a target value for this performance goal at 99% on a daily and monthly basis. In addition, current NERC rules limit the recovery period to no more than 30 minutes for a single event.



The 13-month average forced outage rate is 4.74% or 9,496 MW.
 The 13-month average total outage rate is 16.16% or 32,464 MW.

PCLLRW Count Vs. Peak Load – Daily Values For 13 Months



**PROTECT THE
POWER GRID**
**THINK BEFORE
YOU CLICK!**



Be alert to
malicious
phishing emails.

Report suspicious email activity to PJM.
(610) 666-2244 / it_ops_ctr_shift@pjm.com

