



Co-Located Load Guidance

Tim Horgler

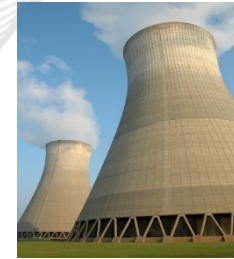
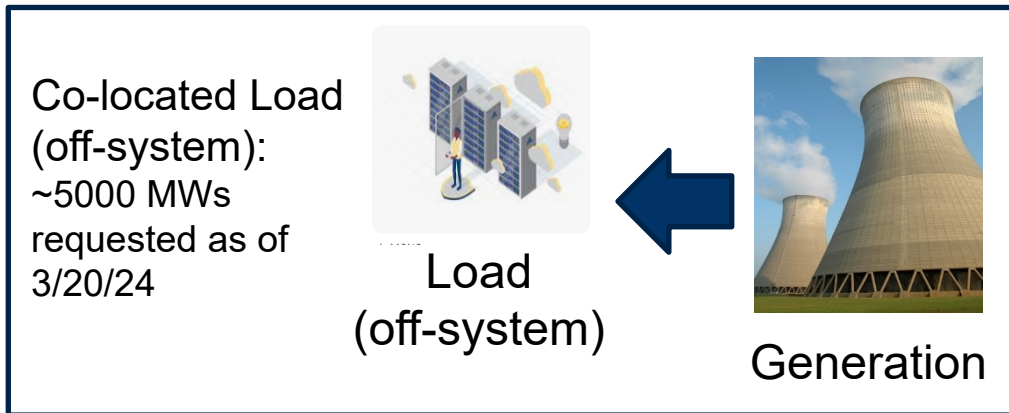
Senior Director, Forward Market Operations &
Performance Compliance

Markets and Reliability Committee

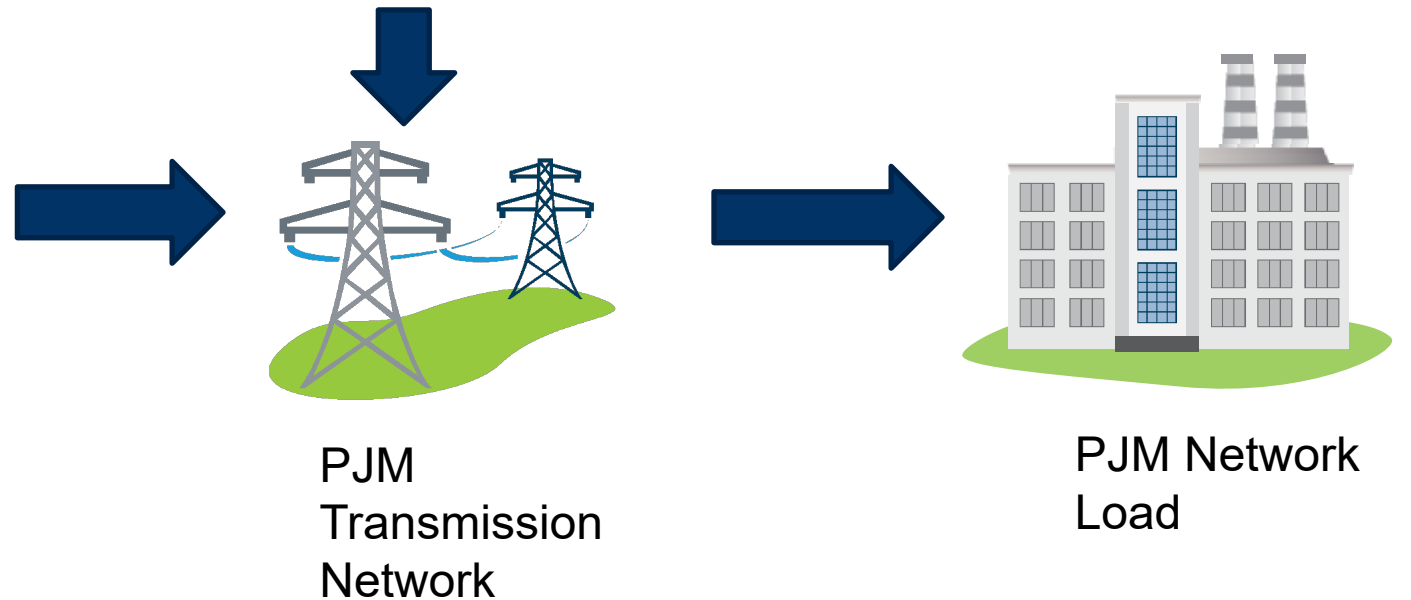
April 25, 2024

- Co-located load configurations continue to significantly increase (~5000 MWs requested).
- PJM posted a guidance document that clarifies existing rules as applied to co-located load configurations.
<https://www.pjm.com/-/media/markets-ops/rpm/rpm-auction-info/pjm-guidance-on-co-located-load.ashx>
- PJM recommends that all co-located load be served from the PJM Transmission System as PJM Network Load with applicable firm transmission service.
- PJM must be notified of any planned modifications to a Customer Generation Facility and a Necessary Studies process will evaluate the potential reliability impacts.
- Co-located load that is not PJM Network Load with applicable firm transmission service must have System Protection Facilities in place to prevent the unexpected injection or withdrawal of power at the POI for the co-located Customer Facility.

Co-located load configuration that is not PJM Network load



Generation





Interconnection Requirements: Co-located load

(Guidance document provides more details)

- Co-located load configurations must be in accordance with the applicable PJM, federal, state and local requirements.
- PJM must be notified of any planned modifications to Customer Facility and a Necessary Studies process will evaluate the potential reliability impacts.
 - Failure to provide advance notification is a breach of the applicable PJM service agreement.
- Any applicable PJM service agreement (e.g., ISA, GIA, WMPA, CSA) must be executed and/or amended to reflect all changes resulting from the incorporation of a co-located load configuration.
- Co-located load requests are not the same as Deactivation requests.
 - Co-located load requests do not result in a change in the MFO of the co-located generation because the generator physically has not changed its operating characteristic, it remains capable of injecting all of its output onto the PJM system, it still is electrically connected and synchronized to the PJM Transmission System and is sharing the same POI with the co-located load.
 - Deactivation requests involves the physical removal of the generation from the PJM system and the MFO will be reduced to zero.



Additional Requirements: Co-located load

(Guidance document provides more details)

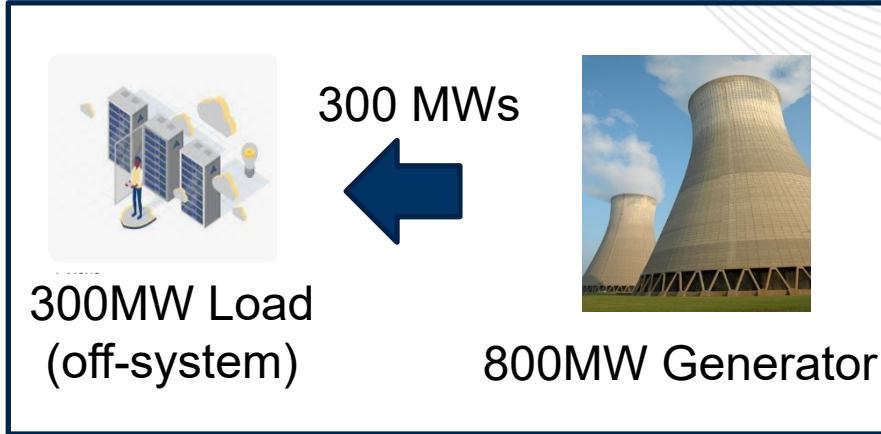
	Co-located Load PJM Network Load	Co-located Load Not PJM Network Load (off-system)
Generation Maximum Facility Output (MFO)	No change	No change
Generation Capacity Injection Rights (CIRs)	No change required except if designated as Behind the Meter Generation (BTMG) must be reduced by portion designated as BTMG	<ul style="list-style-type: none"> Reduced by quantity of co-located load Back-up generation may retain CIRs if meet Capacity and Operational requirements
System Protection	N/A: Load is already part of PJM Network	System Protection Facilities in place to prevent the unexpected injection or withdrawal of power
Settlements	<ul style="list-style-type: none"> The MW consumption of the co-located load and the MW output of the co-located generation Customer Facility (net of Station Power load) must be separately metered. If the co-located generation Customer Facility elects to be designated as Behind the Meter Generation (BTMG), it can net the co-located load directly against the output of the generation facility 	The MW consumption of the co-located load and the MW output of the co-located generation Customer Facility (net of Station Power load) are netted and reported as a single value to Power Meter to be used for PJM settlement purposes.
Metering	Real-time metering (MW & MVAR) and telemetry for the co-located load is required.	Real-time metering (MW & MVAR) and telemetry for the co-located load is required.
Demand Response	Eligible	Not Eligible

- PJM Generation Capacity Resources are dedicated to PJM and must be available when needed
 - Provides energy to the PJM system when needed and meets the capacity and energy must-offer requirement

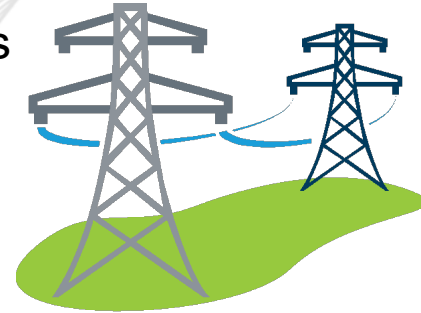
- Requirements for back-up PJM Generation Capacity Resource serving co-located load that is Not PJM Network load
 - Obligations must be fulfilled for the PJM Generation Capacity Resource
 - Coordination with PJM Operations is required before can serve the co-located load.
 - PJM Operations may deny for reasons including capacity related emergencies and/or load shed.
 - eDART cause code “co-located load” with a Forced Outage (FO) recognition is required because of the choice to not serve PJM Network load. All outages using cause code “co-located load” should be entered in eGADS as a forced outage.

Example 1a – Unexpected Load Concerns

Before Co-located Load (off-system)

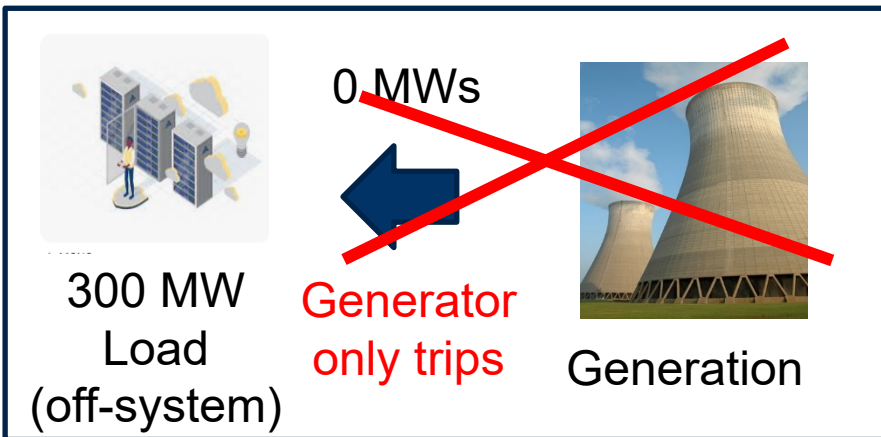


500 MWs



PJM
Transmission
Network

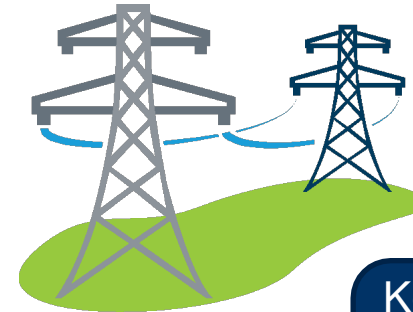
After Co-located Load (**now on-system**)



300 MWs



Unexpected
load on
system!

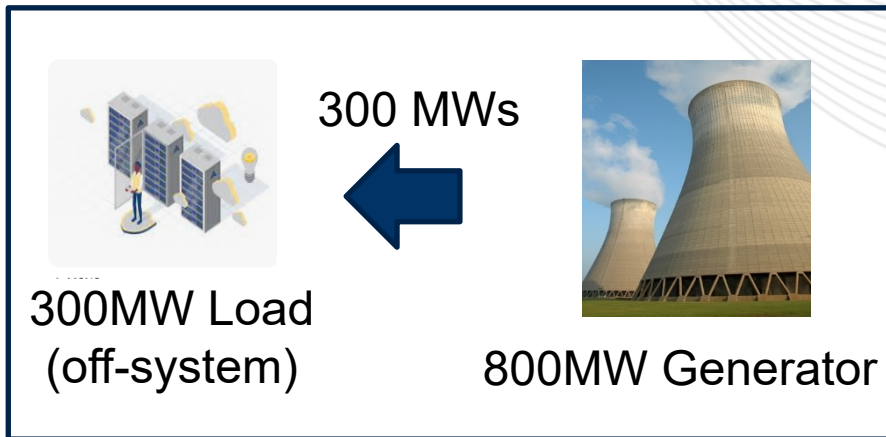


PJM
Transmission
Network

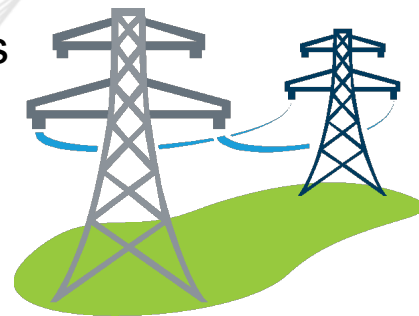
Key Point: System protection is required to avoid unexpected and unapproved load on the system

Example 1b – Concerns Resolved via Load Trip

Before Co-located Load (off-system)

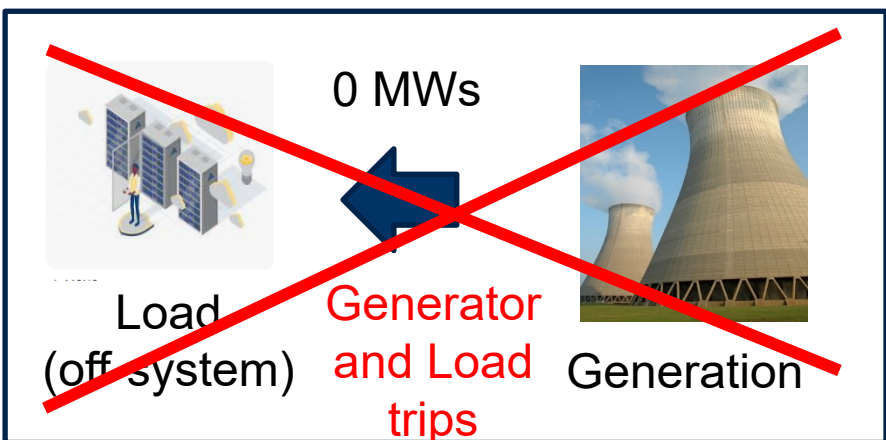


500 MWs

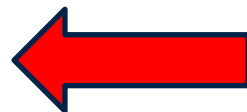


PJM
Transmission
Network

After Co-located Load (off-system)



0 MWs



No
unexpected
load on
system



PJM
Transmission
Network

Key Point: System protection is required to avoid unexpected and unapproved load on the system

- Consider additional feedback and update posted guidance document if necessary
 - Guidance document may be updated as necessary based on, for example, experience gained with co-located load configurations and regulatory developments.

- Review PJM manuals for opportunities to provide additional conforming language.

- Review opportunities to provide additional transparency.

Presenter:
Tim Horger, Tim.horger@pjm.com

Co-located Load Guidance



Member Hotline

(610) 666 – 8980

(866) 400 – 8980

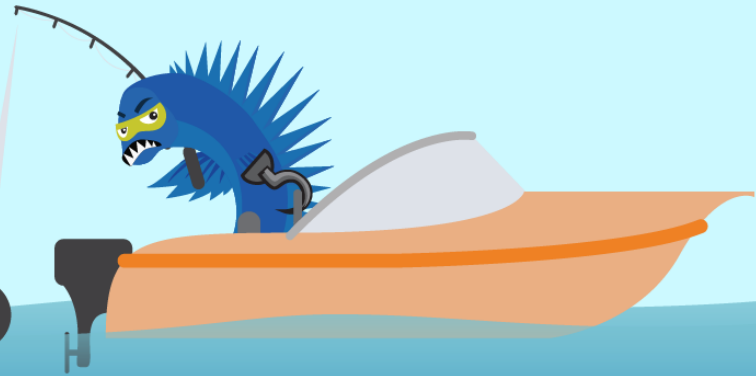
custsvc@pjm.com

**PROTECT THE
POWER GRID**

**THINK BEFORE
YOU CLICK!**



**BE ALERT TO
MALICIOUS PHISHING
EMAILS**



**Report suspicious email activity to PJM.
Call (610) 666-2244 or email it_ops_ctr_shift@pjm.com**