



2017 Day Ahead Scheduling Reserve Requirement

David Kimmel
Engineer, Performance Compliance
System Operations Subcommittee
October 26, 2016

DASR Req. = LFE + FOR Components

- Time Period Winter 2014 through Fall 2016

Load Forecast Error (LFE) Component

- 3 year average of Under forecasted LFE

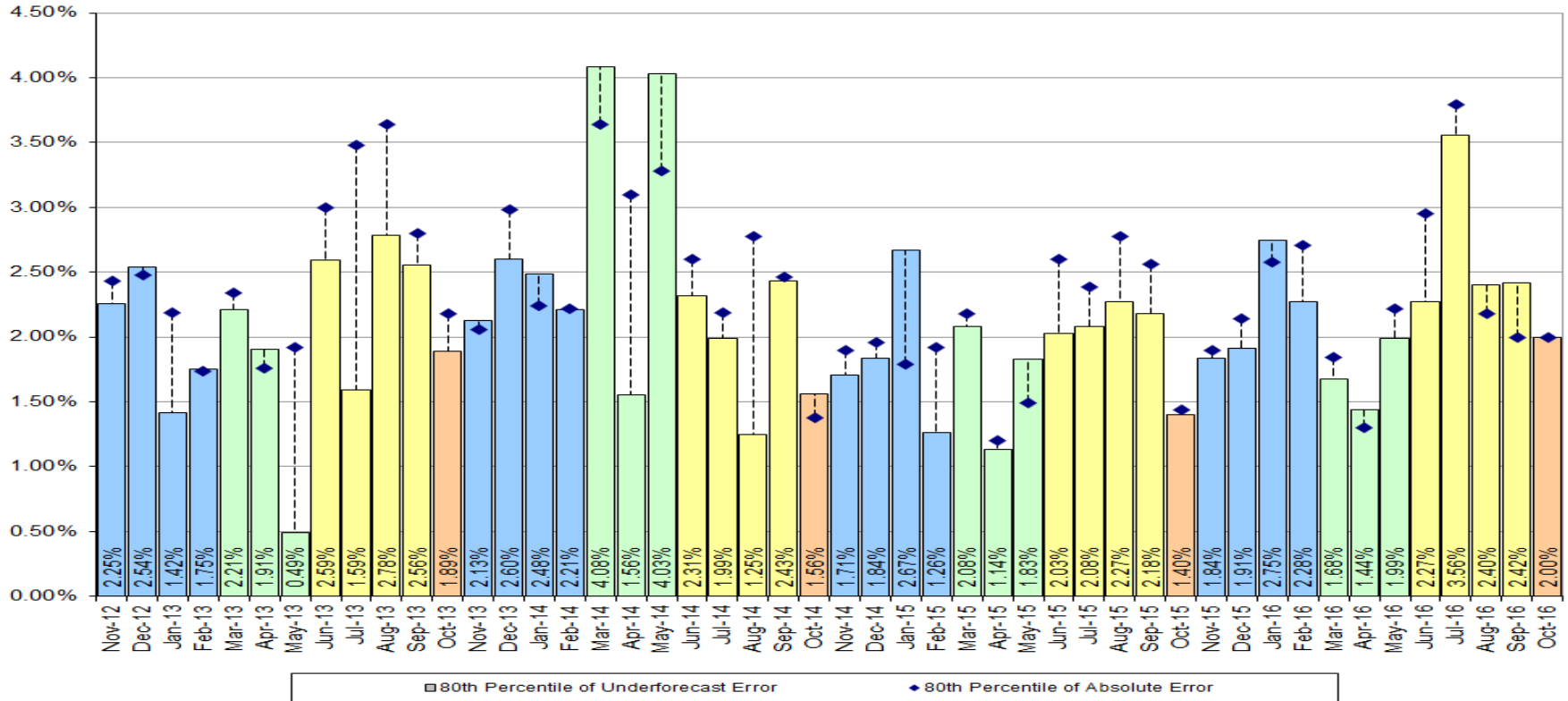
Forced Outage Rate Component

- 3 year average of eDART Forced Outages, submitted after D-1 18:00, effective after D 8:00 ending before D 20:00

Season	Load Forecast Error Component 80th Percentile Absolute Error				Forced Outage Rate Component All Forced Outage Tickets				DA Sched.
	2014	2015	2016	Rollup	2014	2015	2016	Rollup	Req.
Winter	2.36%	1.87%	2.19%	2.14%	4.24%	3.45%	3.04%	3.58%	5.72%
Spring	3.22%	1.68%	1.70%	2.20%	3.36%	3.72%	2.63%	3.24%	5.44%
Summer	2.00%	2.14%	2.66%	2.27%	3.12%	3.63%	3.68%	3.48%	5.74%
Fall	1.56%	1.40%	2.00%	1.65%	3.35%	2.70%		3.02%	4.68%
Annual				2.16%				3.36%	5.51%

- 2017 LFE component is 2.16% (up 0.07%)
- 2017 FOR component is 3.36% (down 0.25%)
- Preliminary 2017 DASR Requirement is 5.51%

Load Forecast Error: Under-forecasts



- 2016 DASR Requirement was 5.70%,
- Preliminary 2017 is 5.51%
 - October 2016 is ongoing (Fall 2016)
- Small increase in Load Forecast Error & small decrease in Forced Outage Rate component
- Review in October, Approval in November, Implement in January
- Final value will be incorporated into up coming Manual 13 Changes