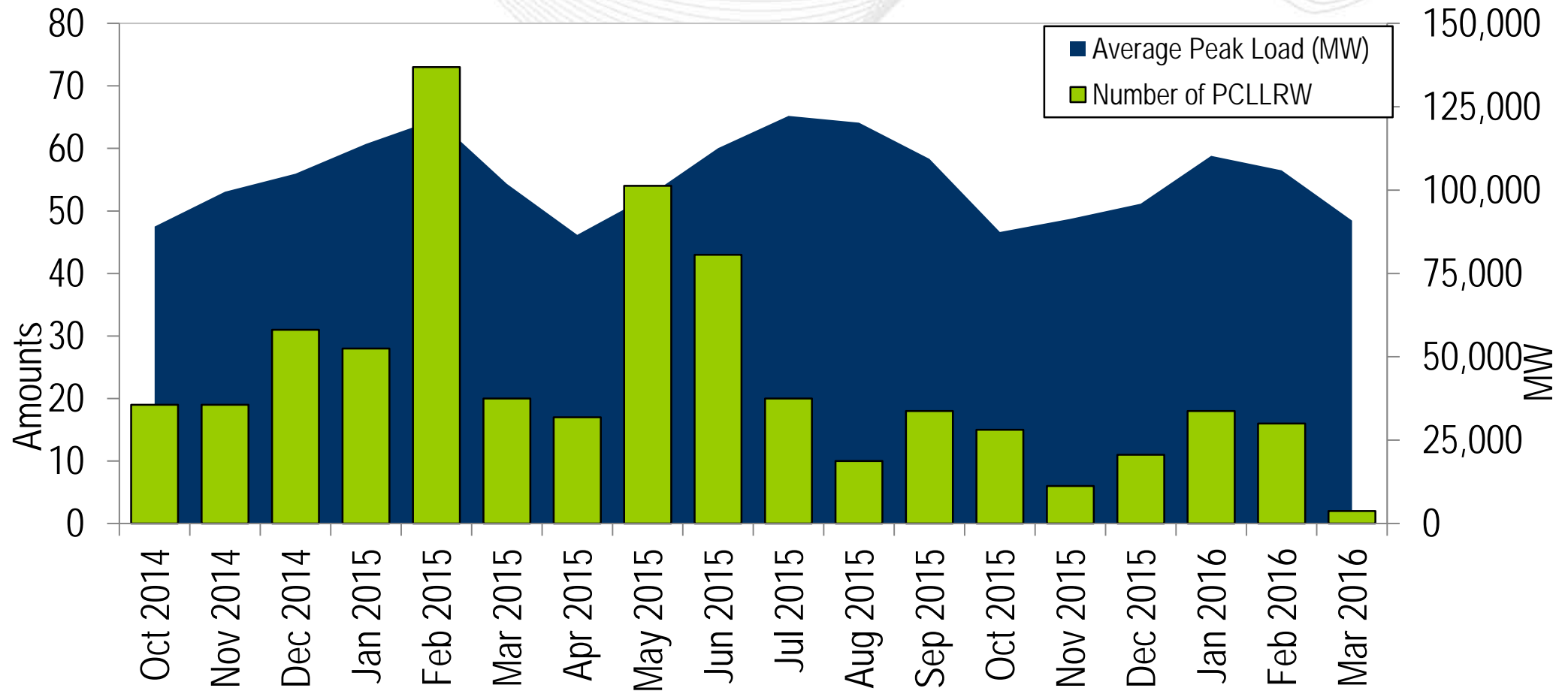
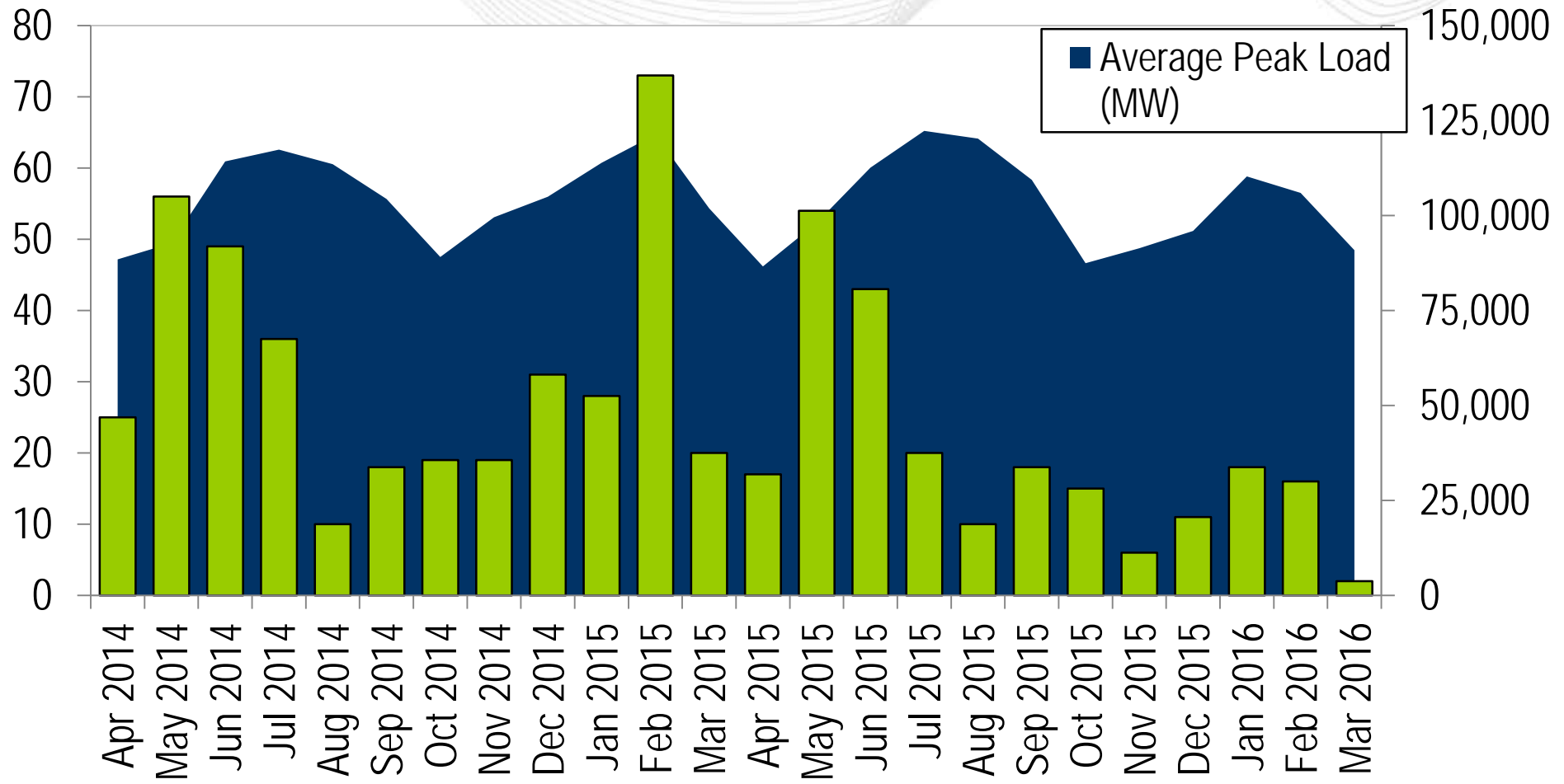


18 Months



24 Months





Average Peak Load Data

Month	Average Peak Load (MW)	Number of PCLLRW
Jan 2014	117,789	173
Feb 2014	111,055	68
Mar 2014	105,587	45
Apr 2014	88,431	25
May 2014	92,707	56
Jun 2014	114,221	49
Jul 2014	117,323	36
Aug 2014	113,490	10
Sep 2014	104,340	18
Oct 2014	89,060	19
Nov 2014	99,519	19
Dec 2014	104,921	31
Jan 2015	113,855	28
Feb 2015	121,284	73
Mar 2015	101,877	20
Apr 2015	86,574	17
May 2015	98,055	54
Jun 2015	112,583	43
Jul-15	122,258	20
August-15	120,225	10
September-15	109,366	18
October-15	87,425	41
Nov 2015	91,362	24
Dec 2015	95,918	13
Jan 2016	110,271	24
Feb 2016	105,924	21
Mar 2016	90,851	9