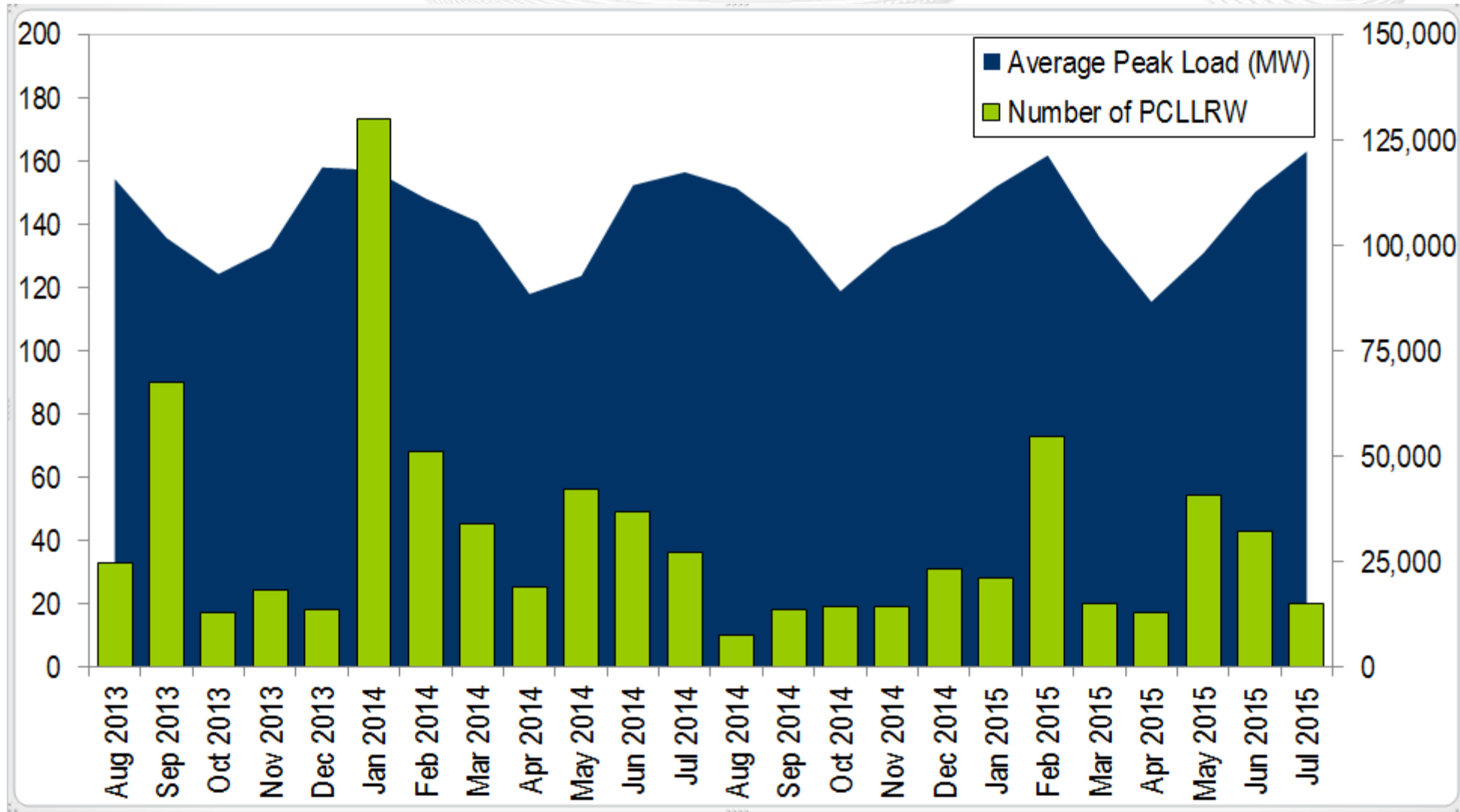
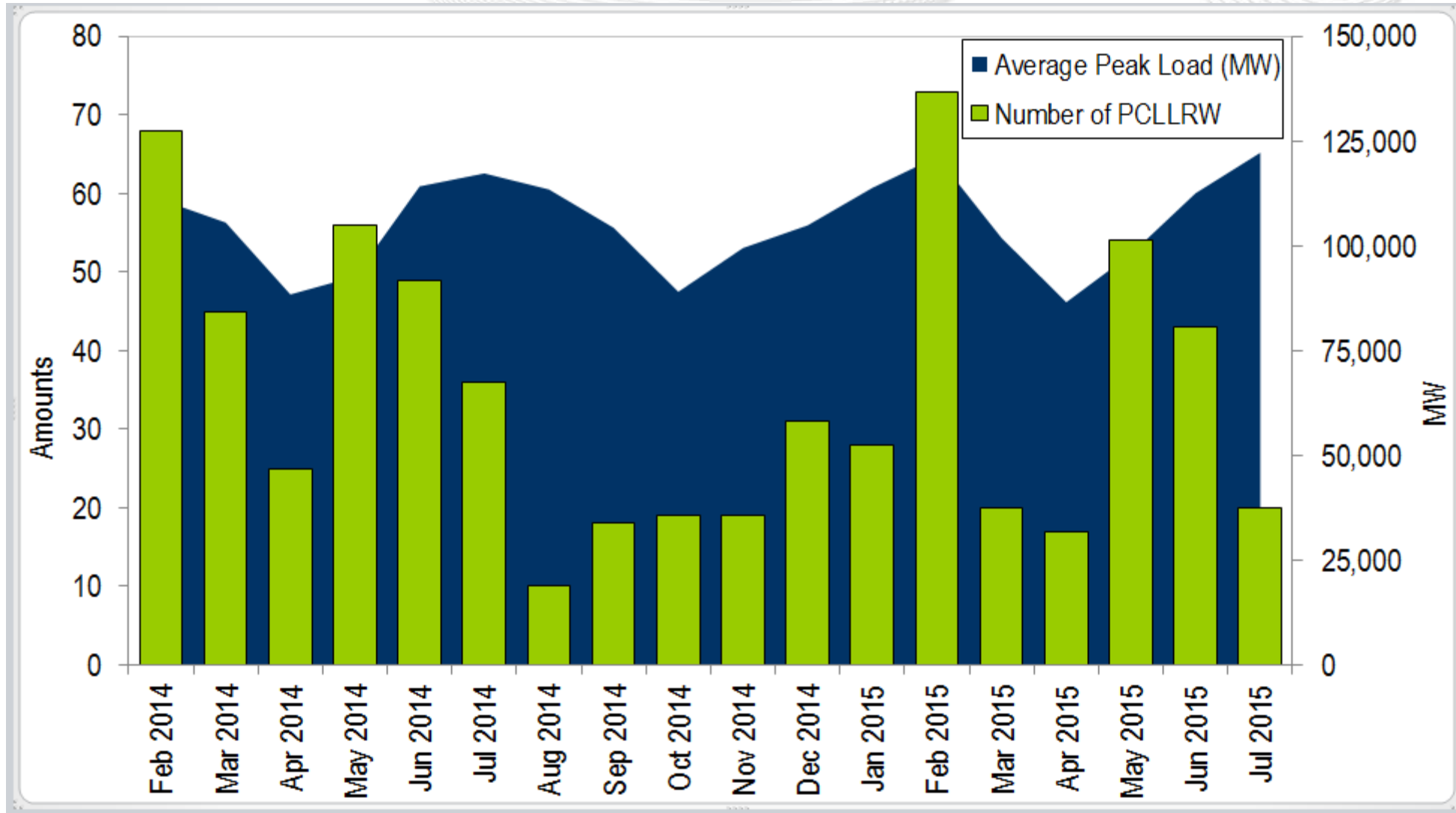


24 Months



18 Months



Data

Date	Average Peak Load (MW)	Number of PCLLRW
Jul 2013	126,058	143
Aug 2013	115,683	33
Sep 2013	101,714	90
Oct 2013	93,148	17
Nov 2013	99,379	24
Dec 2013	118,452	18
Jan 2014	117,789	173
Feb 2014	111,055	68
Mar 2014	105,587	45
Apr 2014	88,431	25
May 2014	92,707	56
Jun 2014	114,221	49
Jul 2014	117,323	36
Aug 2014	113,490	10
Sep 2014	104,340	18
Oct 2014	89,060	19
Nov 2014	99,519	19
Dec 2014	104,921	31
Jan 2015	113,855	28
Feb 2015	121,284	73
Mar 2015	101,877	20
Apr 2015	86,574	17
May 2015	98,055	54
Jun 2015	112,583	43
Jul 2015	122,258	20