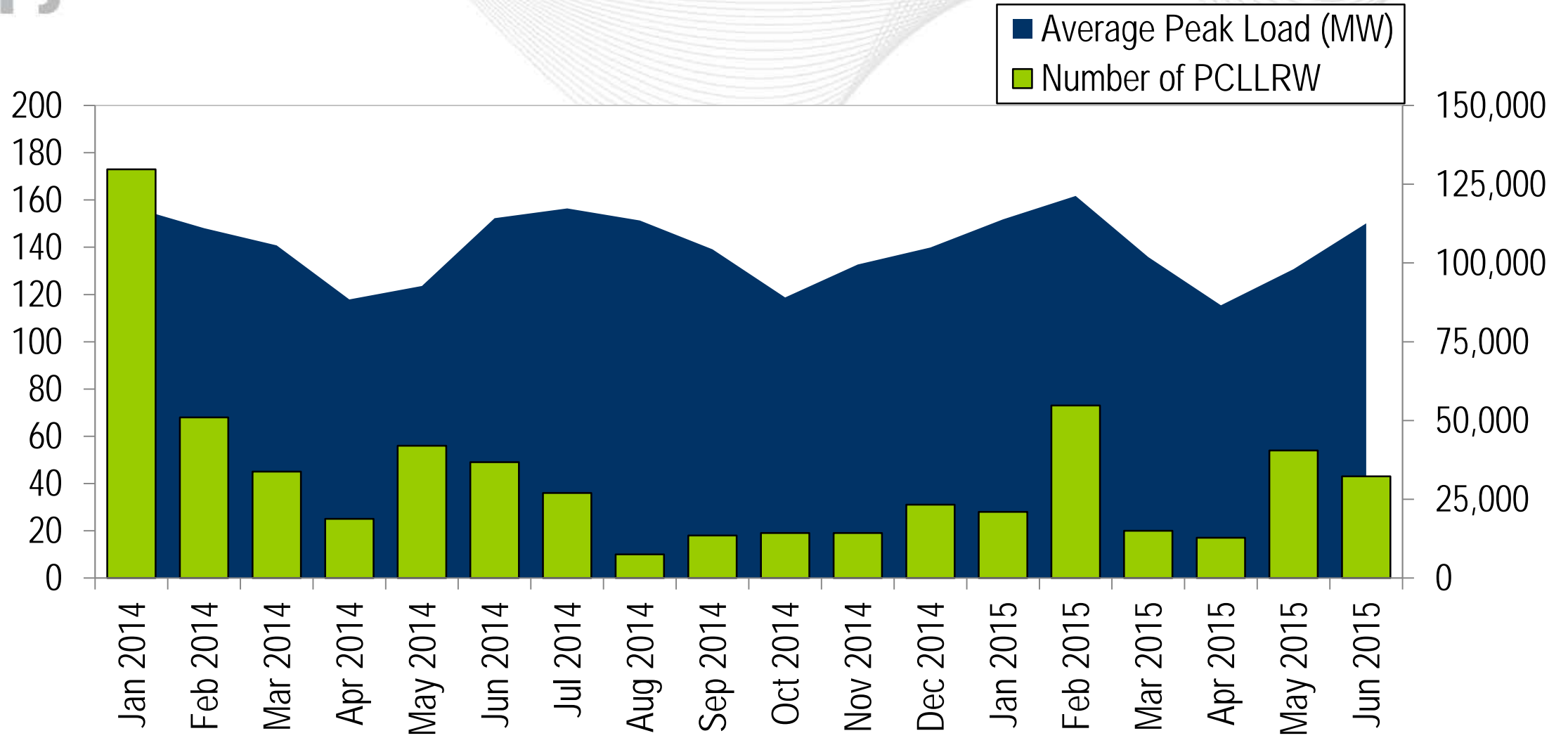


# 18 Months



# Data

Month	Month	Average Peak Load (MW)	Number of PCLLRW
Jun 2013	June	105,784	21
Jul 2013	July	126,058	143
Aug 2013	August	115,683	33
Sep 2013	September	101,714	90
Oct 2013	October	93,148	17
Nov 2013	November	99,379	24
Dec 2013	December	118,452	18
Jan 2014	January	117,789	173
Feb 2014	February	111,055	68
Mar 2014	March	105,587	45
Apr 2014	April	88,431	25
May 2014	May	92,707	56
Jun 2014	June	114,221	49
Jul 2014	July	117,323	36
Aug 2014	August	113,490	10
Sep 2014	September	104,340	18
Oct 2014	October	89,060	19
Nov 2014	November	99,519	19
Dec 2014	December	104,921	31
Jan 2015	January	113,855	28
Feb 2015	February	121,284	73
Mar 2015	March	101,877	20
Apr 2015	April	86,574	17
May 2015	May	98,055	54
Jun 2015	June	112,583	43