

# PJM Roadmap for eDART

As of March 15, 2017



eDART (electronic Dispatcher Application and Reporting Tool) is a suite of electronic applications used to facilitate dispatcher-to-dispatcher communications, along with other engineering communication and coordination functions.

[eDART Product Page](#)

[eDART Training Presentations](#)

[eDART User Group](#)

[eDART XML User Group](#)

PJM  
**Production**

- Feedback
- My eDART
- Upload
- Download
- Hydro Calculator
- Gen. Tickets
- Trans. Tickets
- Black Start
- Instantaneous Reserve Check
- Minimum Gen. Report
- PJM Status Report
- NERC Data
- Facility Data
- Online Help
- Logout

Used to schedule the output of Susquehanna River Hydroelectric Assets

Used to capture unit data and determine critical load in system restoration plans.

Used to verify generation will not over-exceed light load margins.

Used to record and schedule:  
-Generator MW Outages  
-Voltage Regulator Outages  
-Governor Outages  
-D-Curve Adjustments  
-Reactive Tests  
Reactive Test Results Tickets

(IRC)  
Used to verify if enough reserve MW available.

- PJM**  
**Production**
- Feedback
  - My eDART
  - Upload
  - Download
  - Trans. Tickets
  - Network Model
  - Black Start
  - Telemetry Coordination
  - TERM
  - Reactive Reserve
  - Instantaneous Reserve Check
  - Minimum Gen. Report
  - PJM Status Report
  - NERC Data
  - Restoration Data
  - Facility Data
  - Online Help
  - Logout

Used to record and schedule non-generator transmission facility outages.

Used by companies to submit changes to the transmission grid.

Used to coordinate the update of system restoration plans.

Used to view updates made to Object IDs.

Used to record and schedule line, transformer, phase shifters, series and flow devices temperature apparent power ratings.

Used to practice and coordinate restoration of service in PJM area after a blackout.

Used to update facility clearing times data used in dynamic studies.

**PJM**  
**Production**

- Feedback
- My eDART
- Upload
- Download
- Trans. Tickets
- Network Model
- Black Start
- Telemetry Coordination
- TERM
- Reactive Reserve
- Instantaneous Reserve Check
- Minimum Gen. Report
- PJM Status Report
- NERC Data
- Restoration Data
- Facility Data
- Online Help
- Logout

Used to record and coordinate  
-Reactive Reserve Check (RRC)  
-D-Curve Review (on Gen. Tickets menu for Gen users)

Used to manage PSSE mapping information for the purpose of sending and receiving info to/ from NERC SDX

**Current Status Report**  
15 minute snapshot of current status



**Peak Status Report**  
Forecast of system condition for the peak of the day

**Supplemental Status Report (SSR)**  
72 hour forecast of system condition; typically for extreme hot/cold weather conditions

**Gen Checkout**  
Used to compare and highlight discrepancies between Market Gateway bids and Available Capacity. Brings Markets and Operations together in real-time



Legend

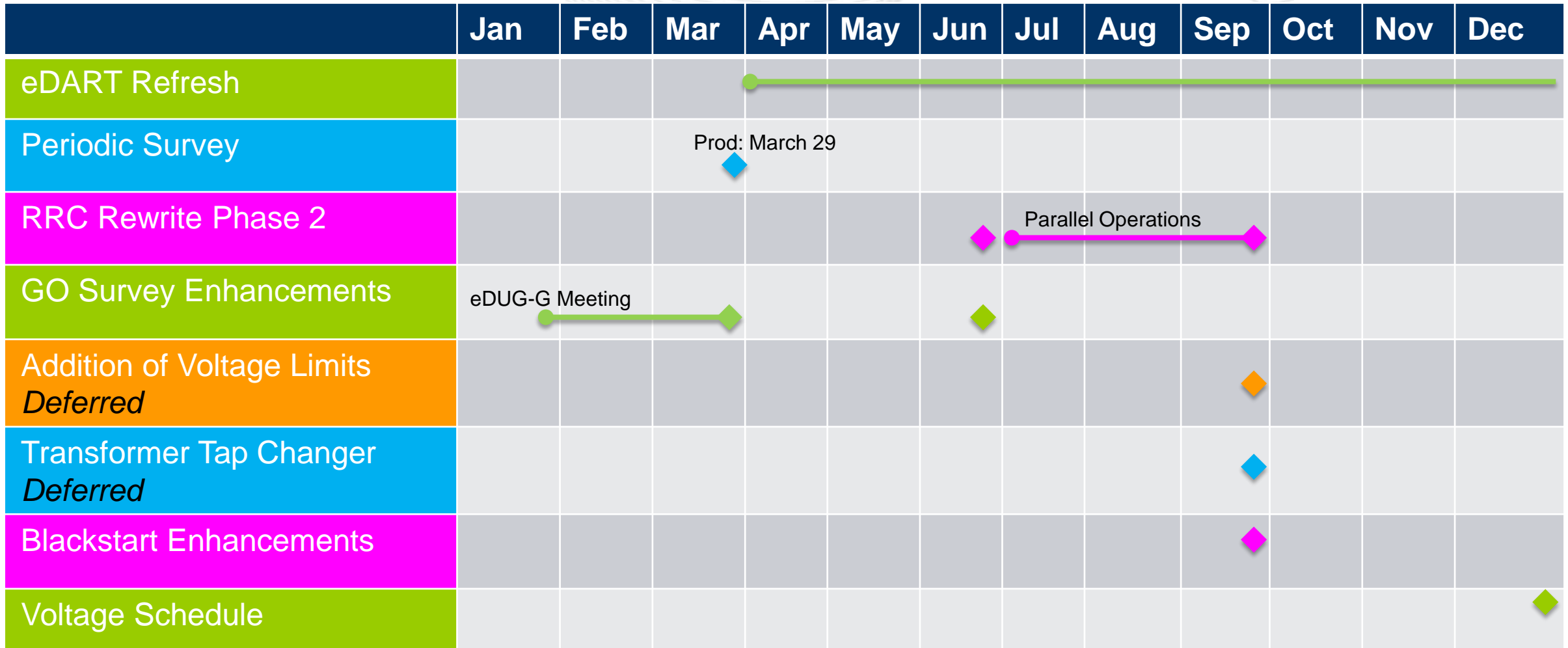
-  Start Date
-  End Date

## RRC Rewrite Phase 1:

- Self Check data made available on February 2.
- Send feedback to [RRCHelp@pjm.com](mailto:RRCHelp@pjm.com).

## Reactive Test Results Tickets:

- Replacement of current MS Excel and email method of communicating reactive test data and analysis results.
- Send feedback to [ReactiveTesting@pjm.com](mailto:ReactiveTesting@pjm.com)
- Current method to be retired **June 1, 2017**.





- eDART will be unavailable from **19:00 on 3/29 to 02:00 on 3/30**.
- Enhancements discussed during 3/2 user group meetings:
  - [eDART User Group presentation](#)
  - [eDART XML User Group presentation](#)
- Enhancements include:
  - Periodic GO Survey issued on a monthly or more frequent basis per Manual 14-D, Section 7.3.5.
  - MW Outage Switch Start Business Rule implemented 12/14 extended to include Unplanned Tickets.
    - Switch Start restricted to 1 hour or less before Est. Start.

- Enhancements include:
  - New flag added to MVAR Test tickets to indicate that ticket is for reactive testing with operational data instead of staged data.
  - Changes Reactive Results Tickets following member feedback:
    - Generator Voltage Schedule PT Ratio & System Voltage PT Ratio data field types changed from number to text.
    - ‘Generator Voltage Scheduled’ changed to ‘Generator Voltage/MVAR/PF Schedule’ and will include unit of measure.
  - Warning message to be displayed when Transmission outage tickets submitted with Start Date in the past.

- Enhancements include:
  - New business rules for use of Unknown cause type:
    - Only applicable for EMS Tripped Tickets.
    - Modification of EMS Tripped Tickets will require Cause Type to be changed from Unknown.

## Current timeline for JAVA Browserless Interface Migration

- Q2 2017
  - Command Line Interface (CLI) design.
  - Stakeholders presentations and feedback.
- Q3 2017
  - Available in Sandbox for testing, training and feedback.
- Q4 2017
  - Parallel Production.
  - Shutdown of JAVA browserless interface; CLI is official browserless interface.

## Current timeline for Web UI refresh

### – 2017

- User Experience Analysis and Design
- Requirements gathering
- User accounts mapping to Account Manager
- Work planning (overall project schedule & web UI page sequencing)

### – 2018

- Web UI refresh
- Progress review

Event	Timing (approximate)
Gen Users Feedback Meeting	January 30
User Group Meetings	March 02
XML/Browserless Documentation Available	Week of February 27
Sandbox Release – XML/Browserless	Week of February 27
Sandbox Release - UI	Week of March 13
Coordinated Testing	March 17
Production Release	March 29

- Reactive Reserve Check (RRC) Rewrite Phase 2
  - Ability for PJM to initiate New RRC.
  - Ability for Transmission Owners to respond to New RRC; submit reserve values and/or acknowledge reserve values.
- GO Survey Enhancements
  - .csv download and upload for responding to GO Survey.
  - Ability to save partially completed GO Survey.
  - Meeting to be scheduled to discuss enhancements.