

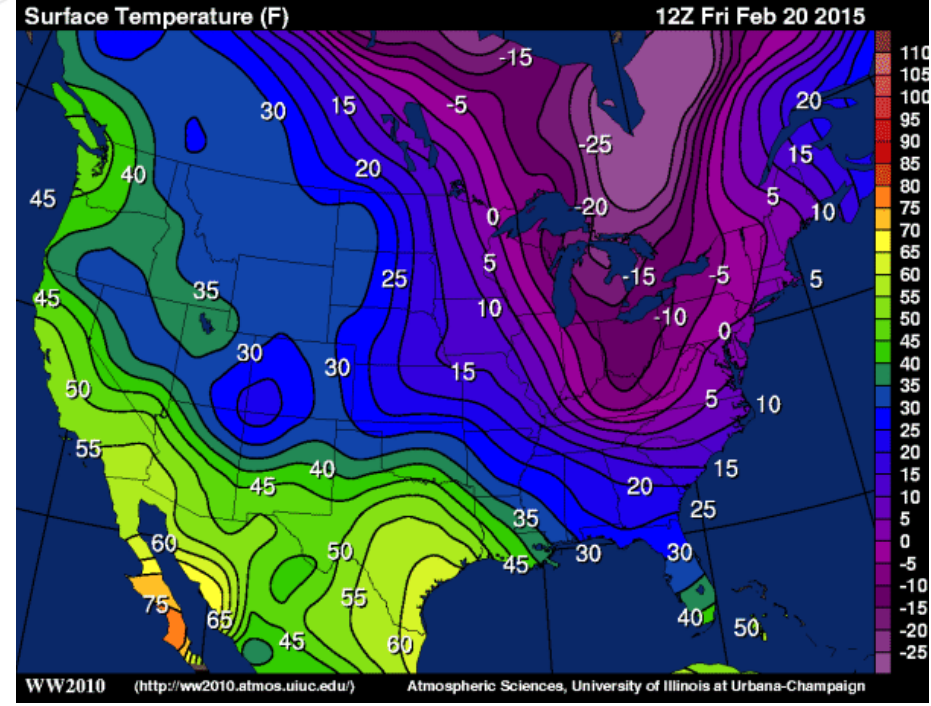
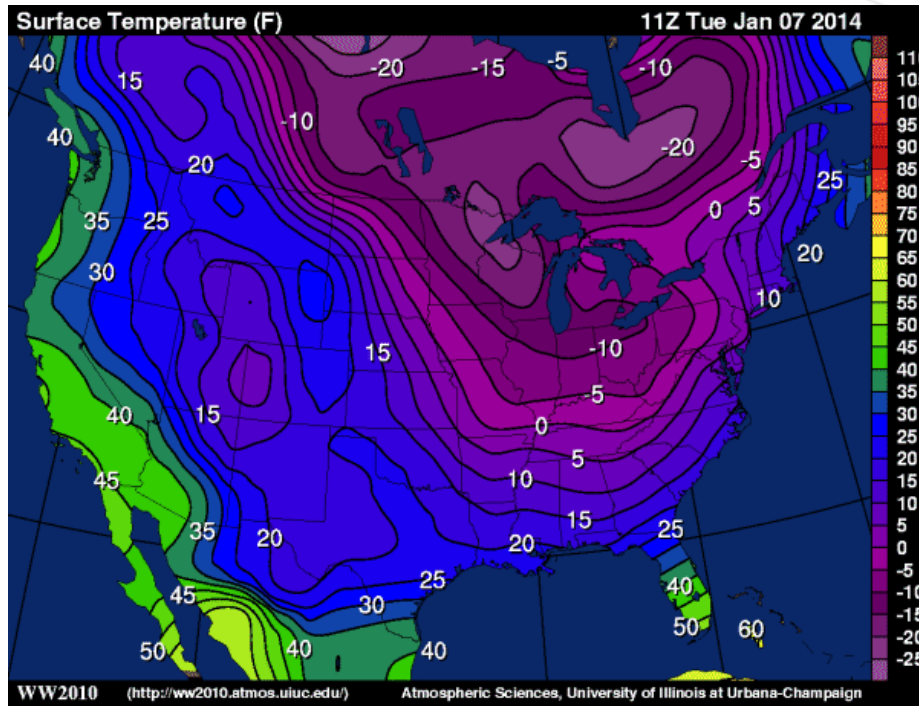


# February Cold Weather Review

March 3, 2015  
TOA-AC

## Polar Vortex 1/7/2014

## 2/20/2015



Load Values (MW)					
Date	Valley	Morning Actual	Morning Forecast	Evening Actual	Evening Forecast
2/19/2015	112,141	134,109	134,305	140,860	140,885
2/20/2015	125,397	143,826	141,851	132,728	132,429

## Top Ten Winter Peaks

Rank	Date	Load MWh
1	2/20/2015	*143,826
2	1/7/2014	†142,863
3	2/19/2015	*140,860
4	1/24/2014	†137,584
5	1/28/2014	137,336
6	2/5/2007	†136,675
7	1/8/2015	*136,669
8	1/30/2014	136,215
9	1/7/2015	*136,119
10	1/29/2014	136,020

† Includes demand response

\* Preliminary telemetered data

† Includes coincident not-yet-integrated zones

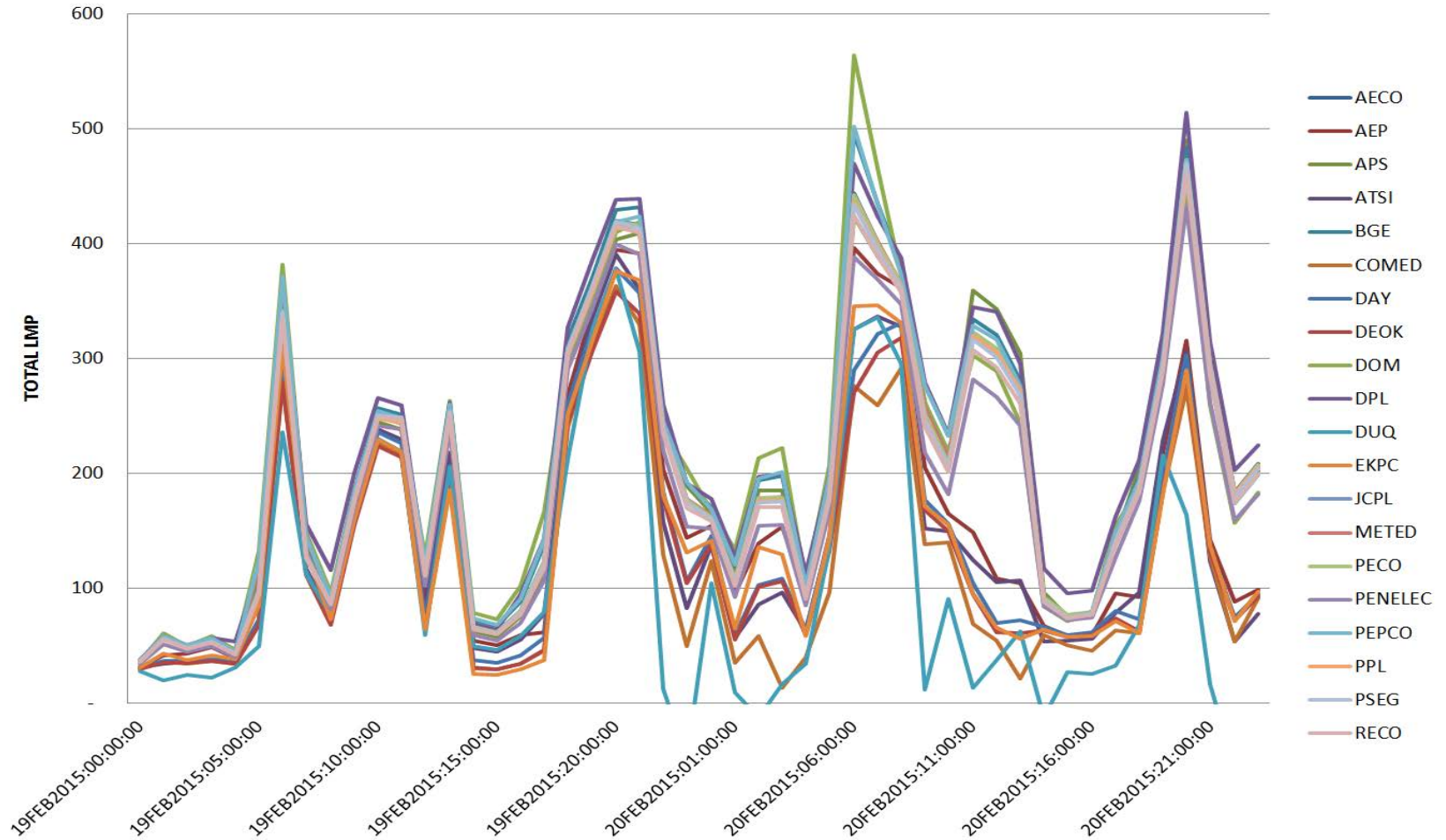


# Generator Performance

Date	Total Forced Outages - ALL fuel types (MW)	Forced Outage Rate	Total Forced Outages - <u>Gas</u> Units (MW)	% of forced outages due to gas issues
2/19 Evening	17,500	9.4%	5,700	32.6%
2/20 Morning	22,800	12.3%	5,100	22.4%

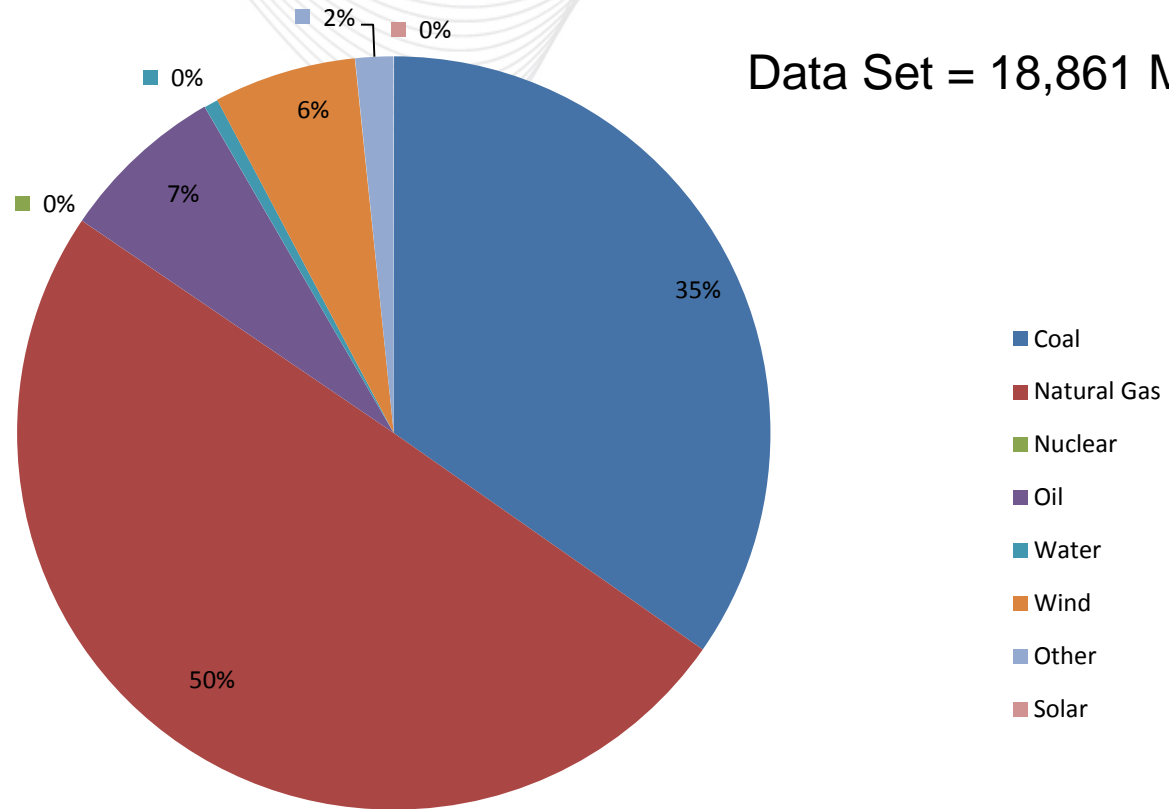
NOTE: All outage numbers are approximate and will be finalized when GADs data is submitted and reviewed.

## REAL TIME HOURLY LMP FEBRUARY 19 THROUGH FEBRUARY 20



# RTO Total Forced Outages by Fuel Type on 01/08/15 HE 08

Data Set = 18,861 MW



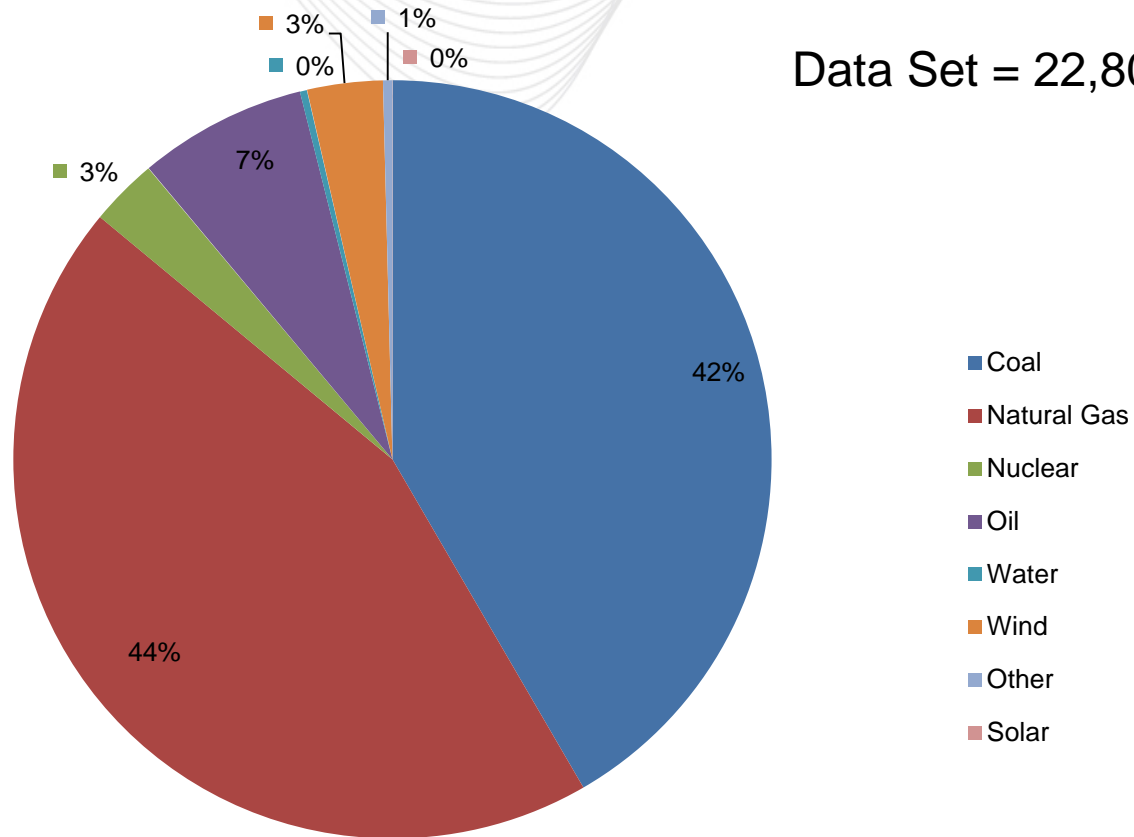




# RTO Total Forced Outages by Fuel Type

02/20/15 HE 08

Data Set = 22,800 MW



- No major transmission constraints
- Generators did a good job of getting outage information and parameter changes into the system /increased notification information into eDart and/or updating notification parameters to reflect fuel procurement timelines
- Dual fuel unit swapping worked well. Gen Owners kept PJM informed of fuel inventory concerns via SSR, Max Run and email notifications.
- Some gas Gen owners still calling PJM to ask about day-ahead commitments without updating parameters.
  - PJM operators gave proper response: “Update unit parameters and let the system work as designed”