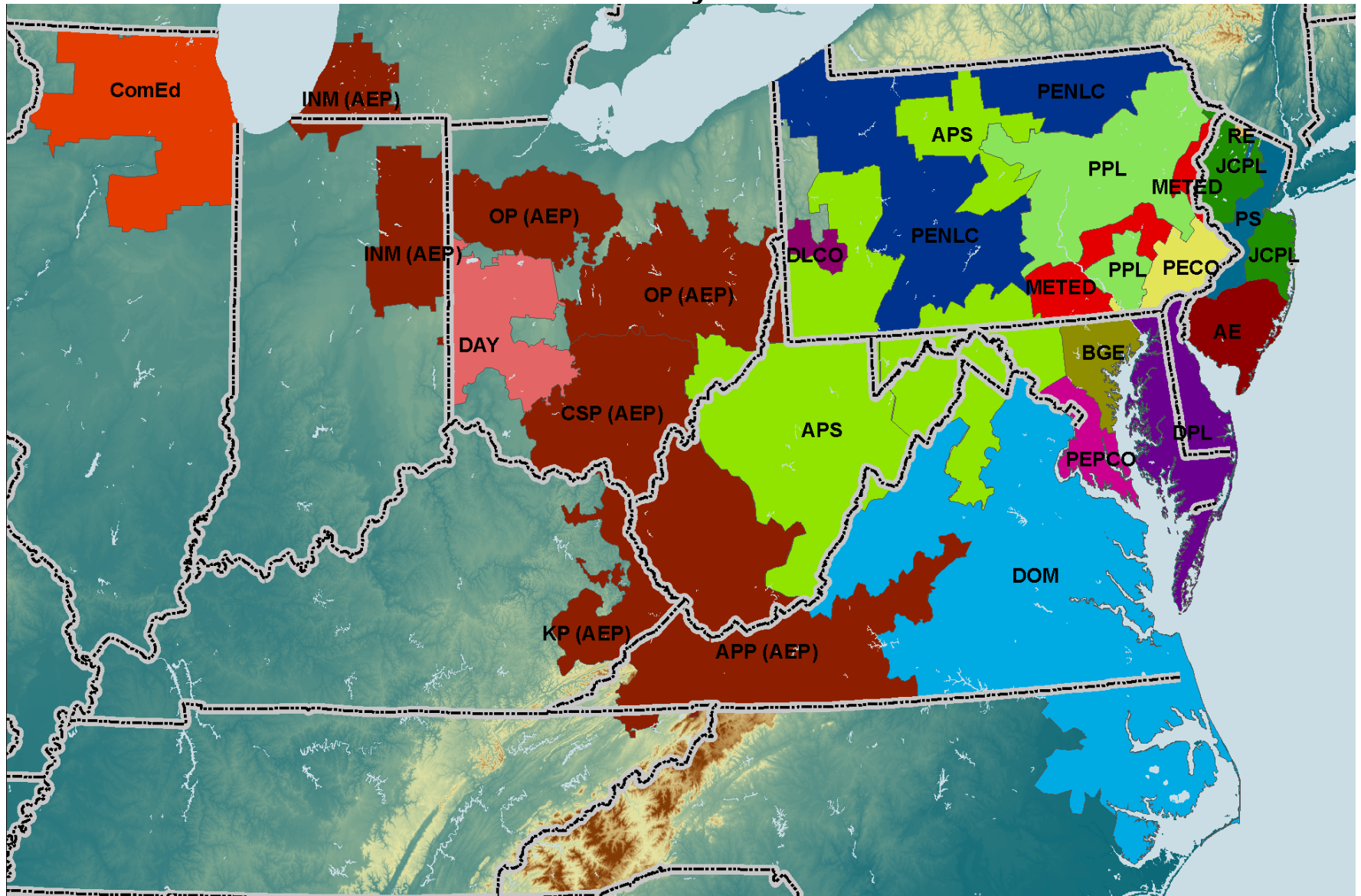


# PJM Load Forecast Report February 2006



Prepared by PJM Capacity Adequacy Planning Department

## TABLE OF CONTENTS

	TABLE NUMBER	CHART PAGE	TABLE PAGE
EXECUTIVE SUMMARY			1
FORECAST COMPARISON:			
Summer Geographic Zone and PJM RTO – Comparison to Prior Peak Forecasts	A-1		23
Winter Geographic Zone and PJM RTO – Comparison to Prior Peak Forecasts	A-2		25
PEAK LOAD FORECAST AND ANNUAL GROWTH RATES:			
Seasonal Unrestricted PJM Peak Forecast			27
Summer Peak Forecasts and Growth Rates of each Geographic Zone and Total PJM	B-1	2, 4-22	28
Winter Peak Forecasts and Growth Rates of each Geographic Zone and Total PJM	B-2	3, 4-22	30
Spring Peak Forecasts of each Geographic Zone and Total PJM	B-3		32
Fall Peak Forecasts of each Geographic Zone and Total PJM	B-4		34
Monthly Peak Forecasts of each Geographic Zone and PJM Totals	B-5		36
Monthly Peak Forecasts of FE/GPU and PLGrp	B-6		38
Active Load Management in Planning Placed Under PJM Coordination by Geographic Zone	B-7		39
COMBINATION OF SEASONAL PEAKS:			
Central Mid-Atlantic: BGE, MetEd, PEPCO, PL and UGI Seasonal Peaks	C-1		41
Western Mid-Atlantic: MetEd, PENLC, PL and UGI Seasonal Peaks	C-2		42

	<b>TABLE NUMBER</b>	<b>CHART PAGE</b>	<b>TABLE PAGE</b>
Eastern Mid-Atlantic: AE, DPL, JCPL, PECO, PS and RECO Seasonal Peaks	C-3		43
Southern Mid-Atlantic: BGE and PEPCO Seasonal Peaks	C-4		44
<b>PJM HISTORICAL DATA:</b>			
Historical RTO Summer and Winter Peaks	D-1		45
Historical RTO Net Energy	D-2		46

## TERMS AND ABBREVIATIONS USED IN THIS REPORT

AE	Atlantic Electric zone (part of Pepco Holdings, Inc)
AEP	American Electric Power zone (incorporated 10/1/2004)
APP	Appalachian Power, sub-zone of AEP
APS	Allegheny Power zone (incorporated 4/1/2002)
Base Load	Average peak load on non-holiday weekdays with no heating or cooling load
BGE	Baltimore Gas & Electric zone
COMED	Commonwealth Edison zone (incorporated 5/1/2004)
Contractually Interruptible	Load Management from customers responding to direction from a control center
Cooling Load	Summer peak load less base load
CSP	Columbus Southern Power, sub-zone of AEP
Direct Control	Load Management achieved directly by a signal from a control center
DAY	Dayton Power & Light zone (incorporated 10/1/2004)
DLCO	Duquesne Lighting Company zone (incorporated 1/1/2005)
DPL	Delmarva Power & Light zone (part of Pepco Holdings, Inc)
FE/GPU	The combination of First Energy's Jersey Central Power & Light, Metropolitan Edison, and Pennsylvania Electric zones (formerly GPU)
Heating Load	Winter peak load less base load
INM	Indiana Michigan Power, sub-zone of AEP
JCPL	Jersey Central Power & Light zone
KP	Kentucky Power, sub-zone of AEP
METED	Metropolitan Edison zone
MP	Monongahela Power, sub-zone of APS
OP	Ohio Power, sub-zone of AEP
PECO	PECO Energy zone
PED	Potomac Edison, sub-zone of APS

PEPCO	Potomac Electric Power zone (part of Pepco Holdings, Inc)
PL	PPL Electric Utilities, sub-zone of PLGroup
PLGroup/PLGRP	Pennsylvania Power & Light zone
PENLC	Pennsylvania Electric zone
PS	Public Service Electric & Gas zone
RECO	Rockland Electric (East) zone (incorporated 3/1/2002)
UGI	UGI Utilities, sub-zone of PLGroup
WP	West Penn Power, sub-zone of APS
Zone	Areas within the PJM Control Area, as defined in Schedule 16 of the PJM Reliability Assurance Agreement

# 2006 PJM LOAD REPORT

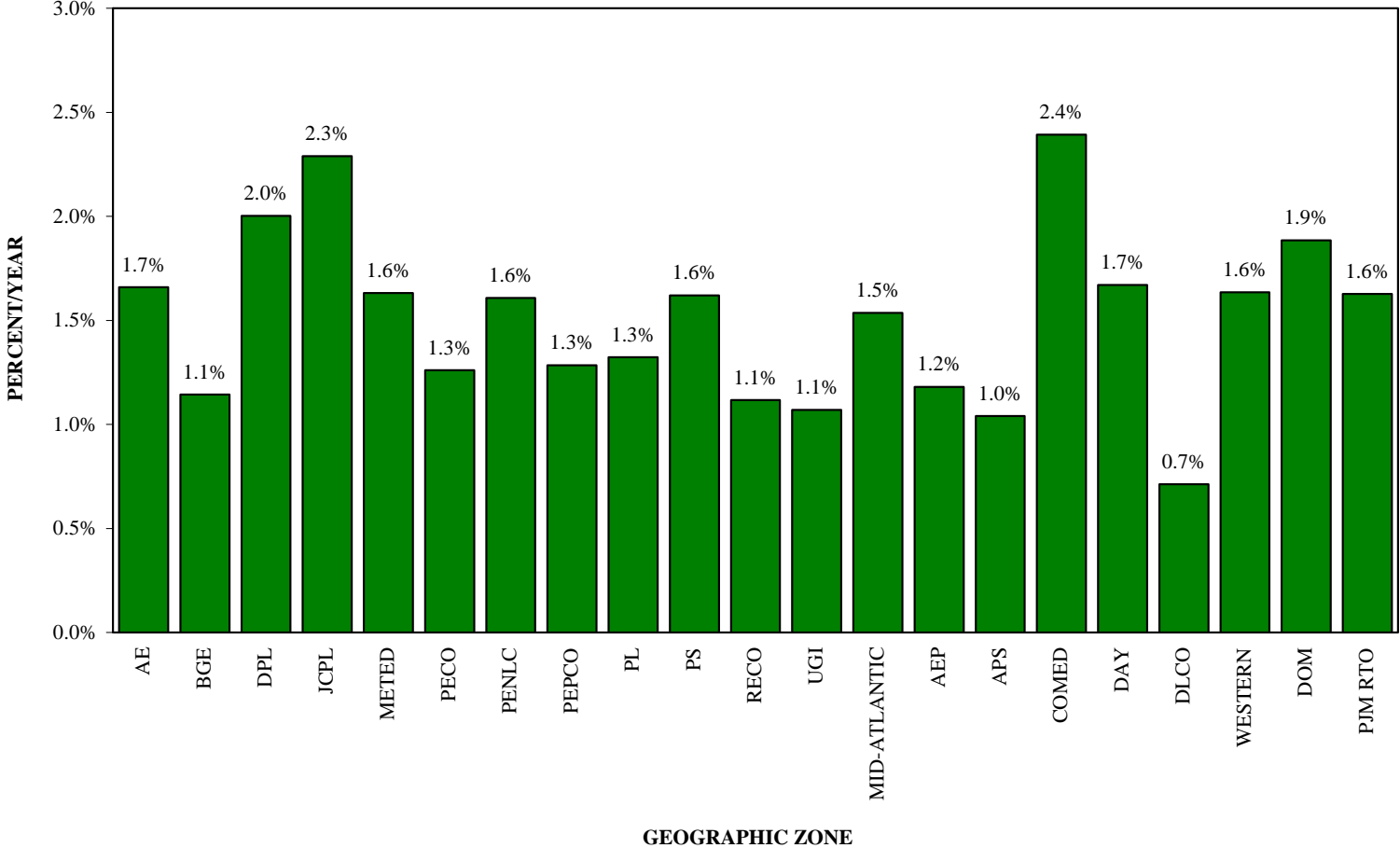
## EXECUTIVE SUMMARY

1. This report represents the first independent load forecast prepared by PJM staff. It replaces the diversified sum of zones forecast previously prepared by the Load Analysis Subcommittee.
2. The report includes long-term forecasts of peaks and load management for each PJM zone, region, and the total RTO.
3. The PJM RTO weather normalized summer peak for 2005 was 132,270 MW. The projection for the 2006 PJM RTO summer peak is 133,500 MW, an increase of 1,230 MW, or 0.9%, from the 2005 normalized peak.
4. Summer peak load growth for PJM RTO is projected to average 1.6% per year over the next 10 years. The PJM RTO summer peak reaches 156,893 MW in 2016, a 10-year increase of 23,393 MW. Annualized growth rates for individual zones range from 0.7% to 2.4%.
5. Winter peak load growth for PJM RTO is projected to average 1.6% per year over the next 10 years. The PJM RTO winter peak load in 2015/16 is forecast to be 128,342 MW, a 10-year increase of 18,300 MW. Annualized growth rates for individual zones range from 0.9% to 2.6%.
6. Based on the forecast contained within this report, the PJM RTO will continue to be summer peaking during the next 10 years.

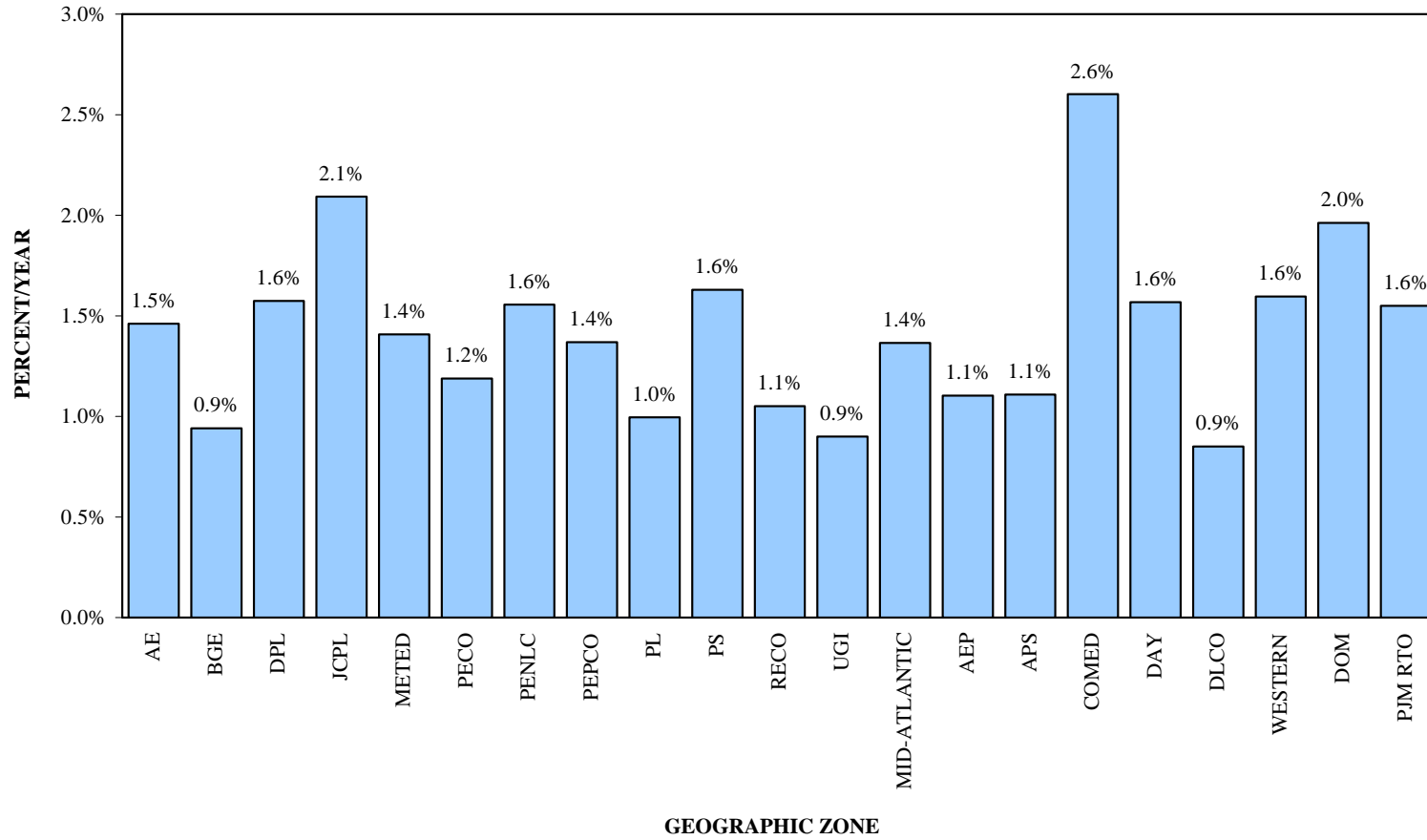
### **NOTE:**

All 10-year compound growth rates are calculated from the first year of the forecast.

**PJM SUMMER PEAK LOAD GROWTH RATE  
2006-2016**

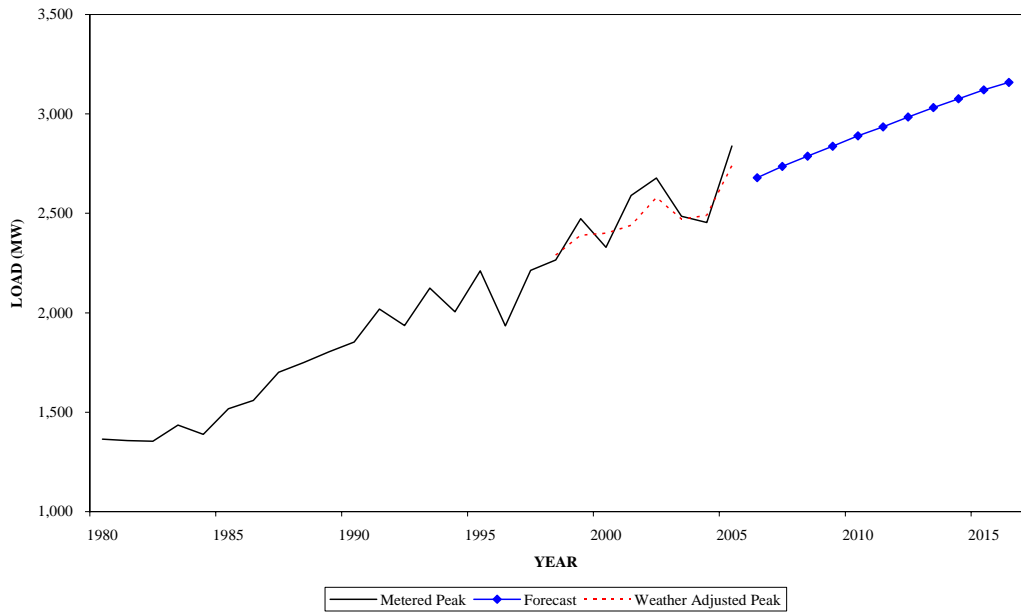


**PJM WINTER PEAK LOAD GROWTH RATE  
2006-2016**

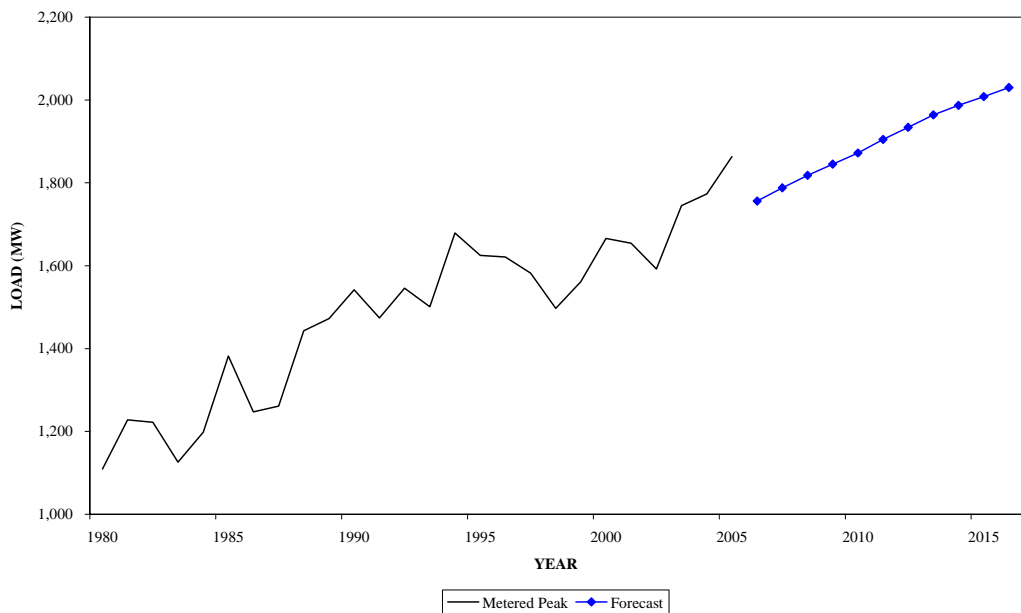




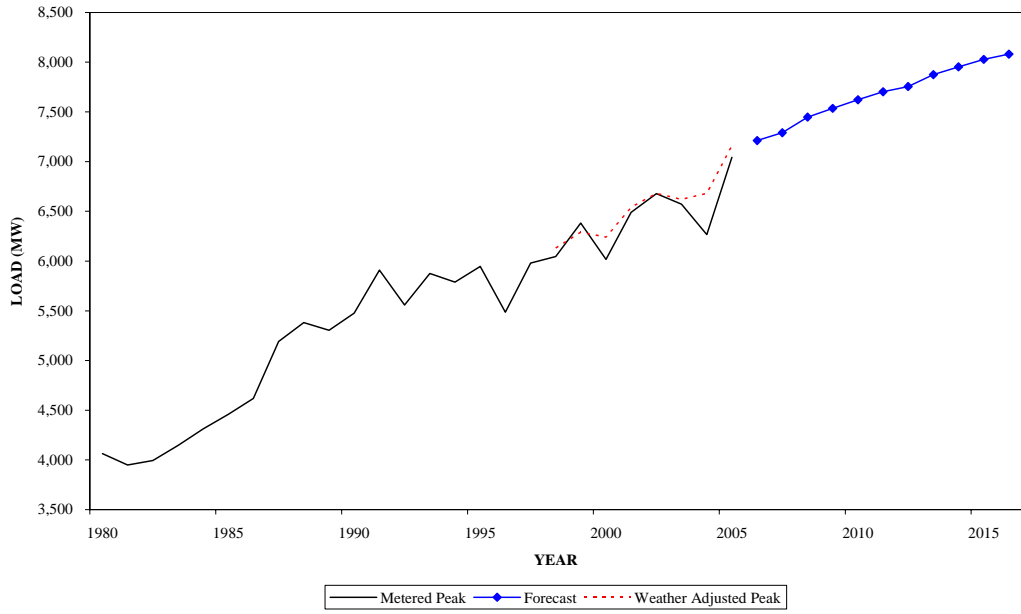
**SUMMER PEAK DEMAND FOR AE  
GEOGRAPHIC ZONE**



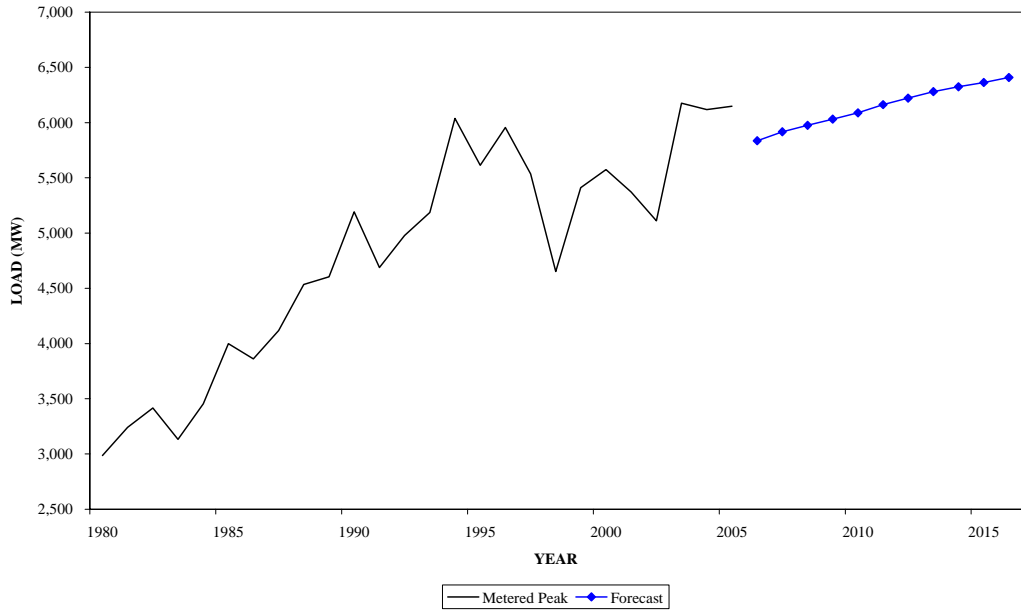
**WINTER PEAK DEMAND FOR AE  
GEOGRAPHIC ZONE**



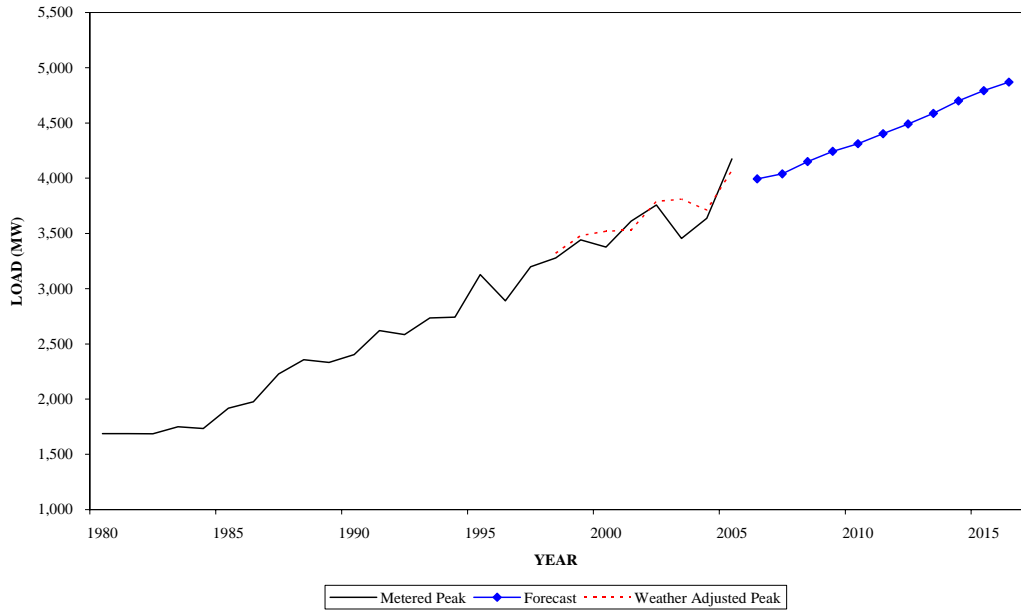
**SUMMER PEAK DEMAND FOR BGE  
GEOGRAPHIC ZONE**



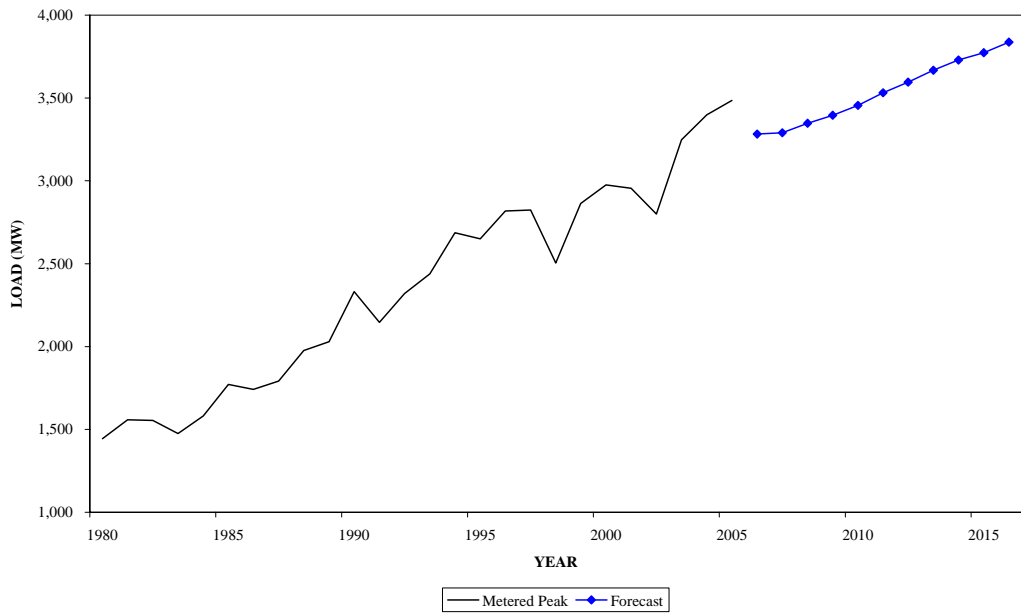
**WINTER PEAK DEMAND FOR BGE  
GEOGRAPHIC ZONE**



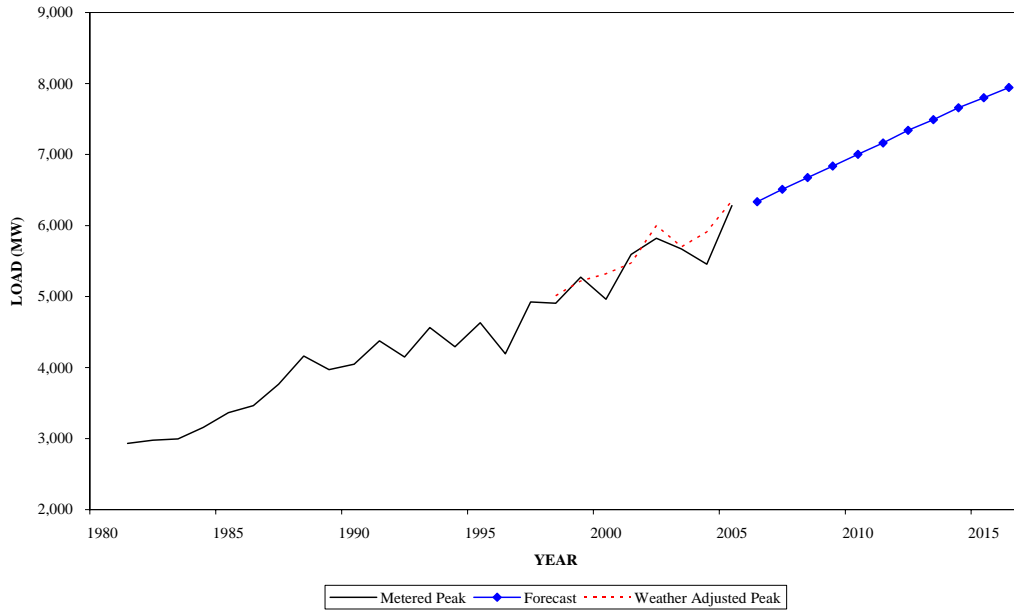
**SUMMER PEAK DEMAND FOR DPL  
GEOGRAPHIC ZONE**



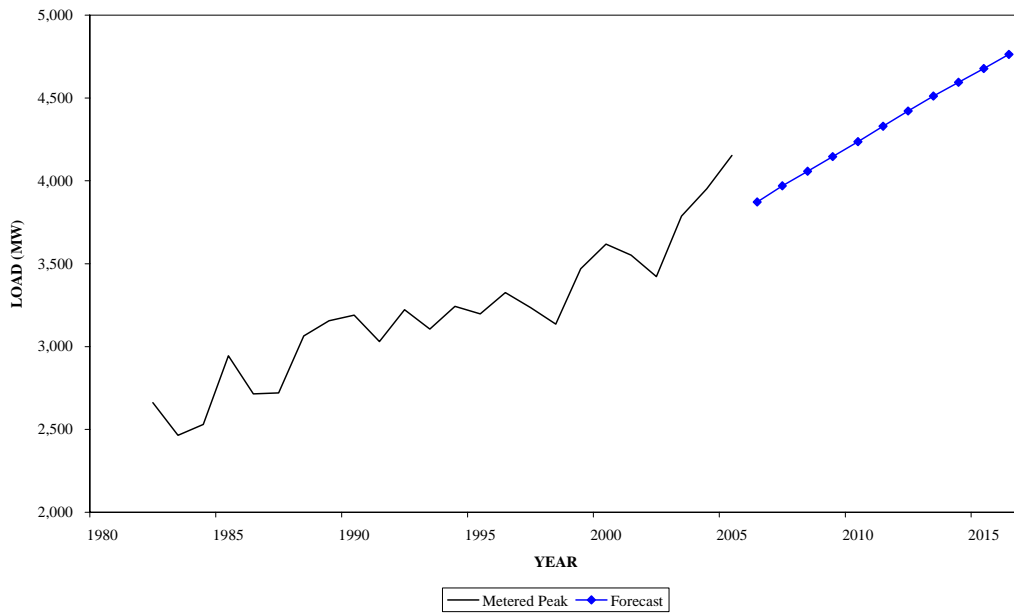
**WINTER PEAK DEMAND FOR DPL  
GEOGRAPHIC ZONE**



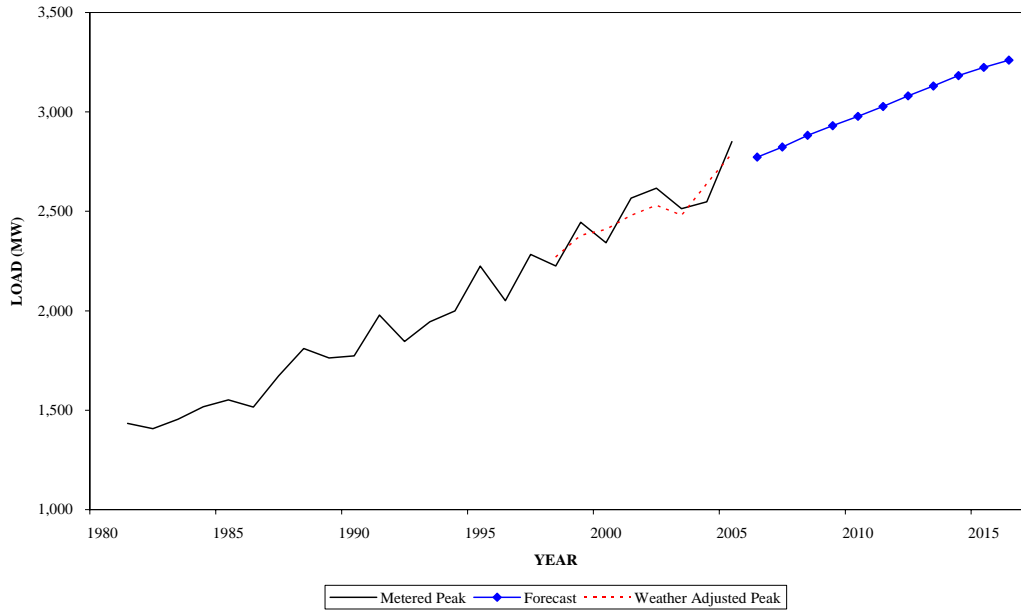
**SUMMER PEAK DEMAND FOR JCPL  
GEOGRAPHIC ZONE**



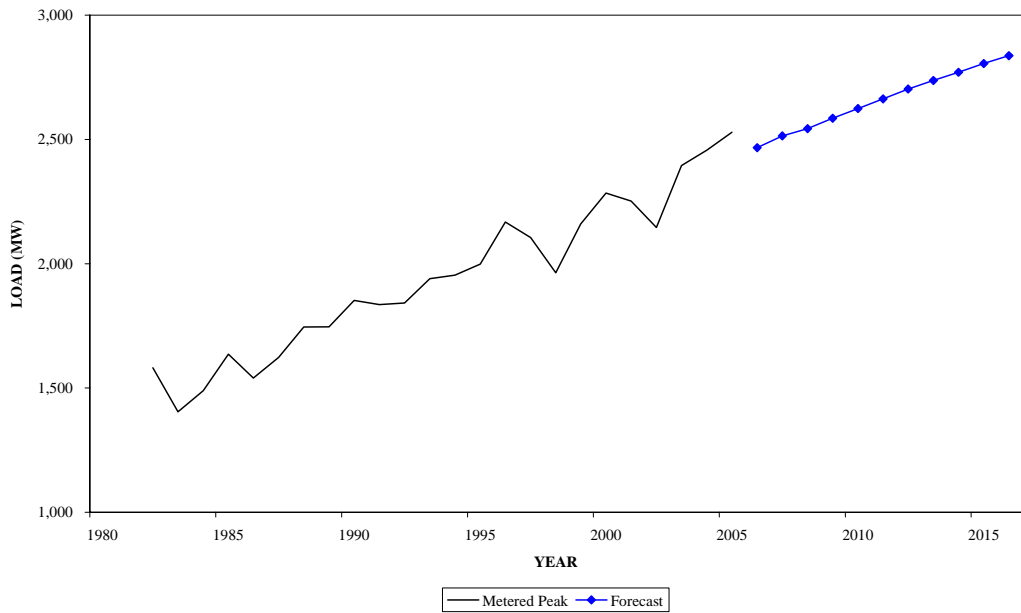
**WINTER PEAK DEMAND FOR JCPL  
GEOGRAPHIC ZONE**



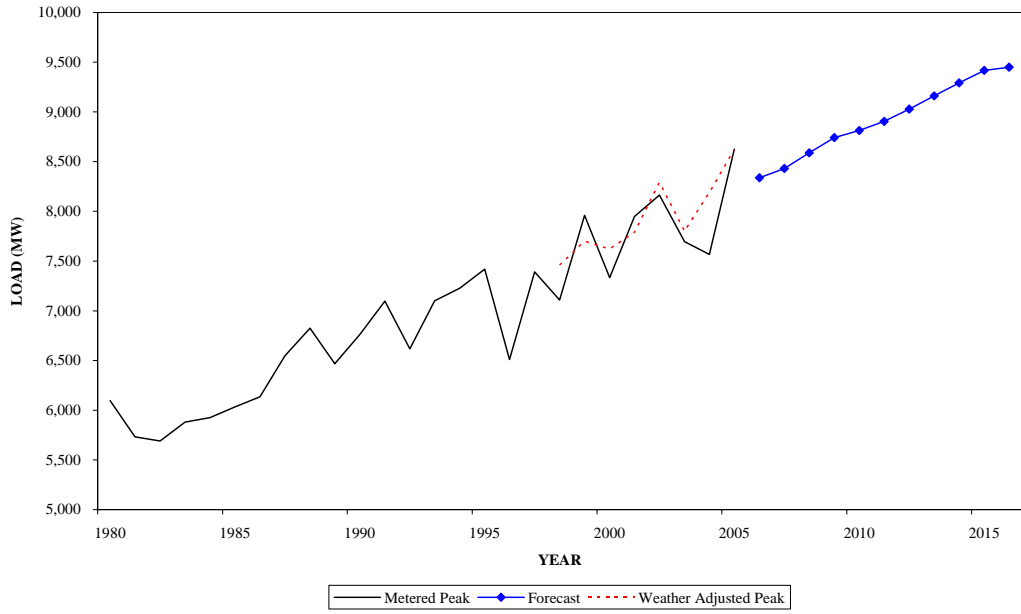
**SUMMER PEAK DEMAND FOR METED  
GEOGRAPHIC ZONE**



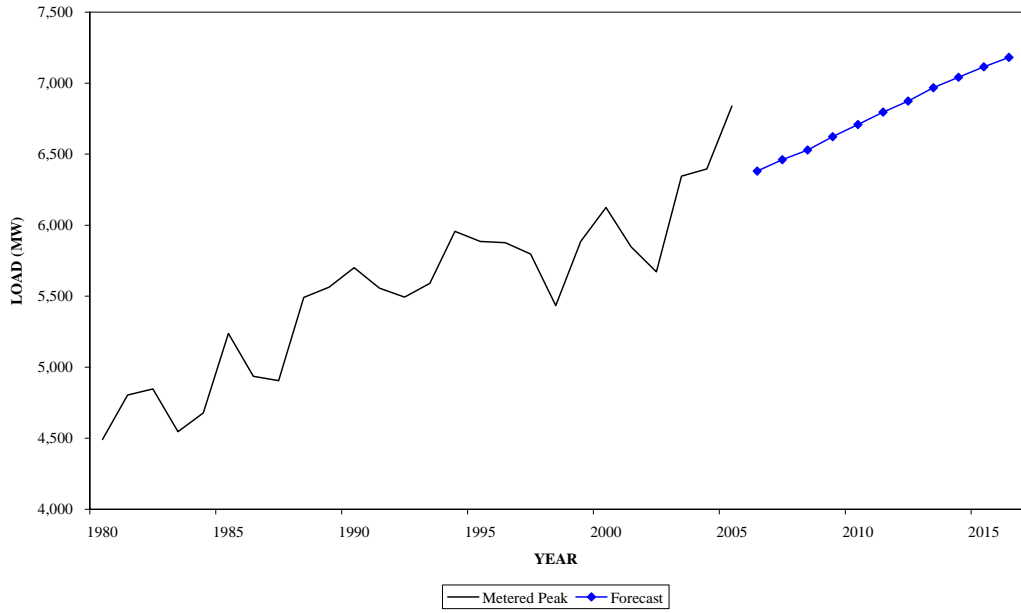
**WINTER PEAK DEMAND FOR METED  
GEOGRAPHIC ZONE**



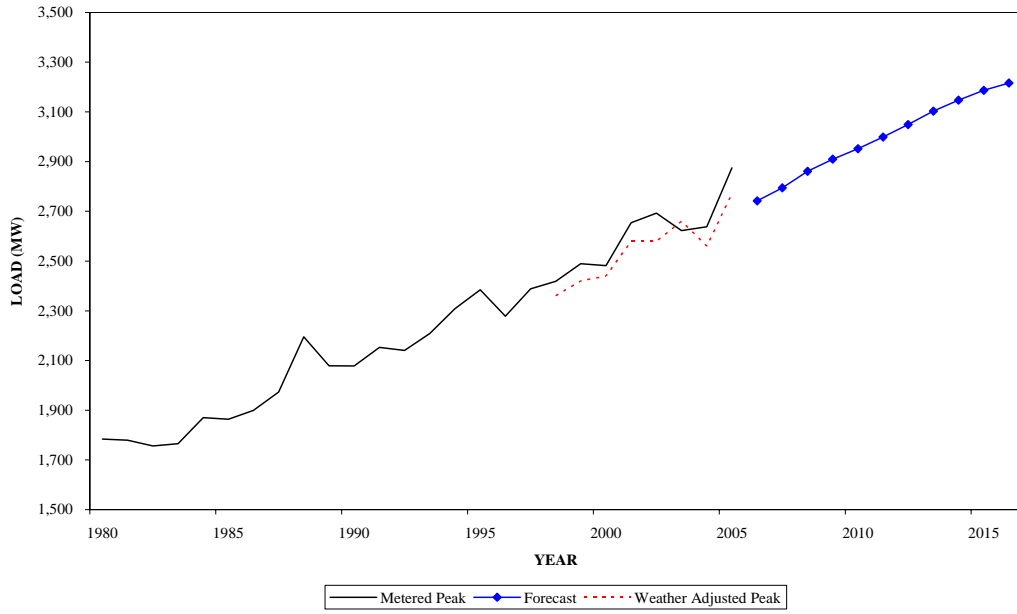
**SUMMER PEAK DEMAND FOR PECO  
GEOGRAPHIC ZONE**



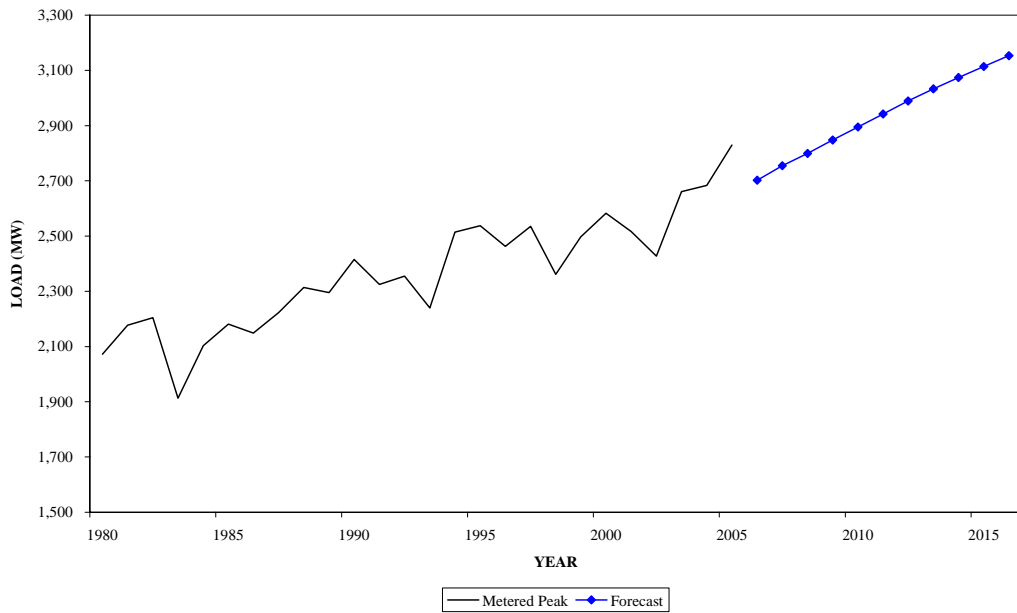
**WINTER PEAK DEMAND FOR PECO  
GEOGRAPHIC ZONE**



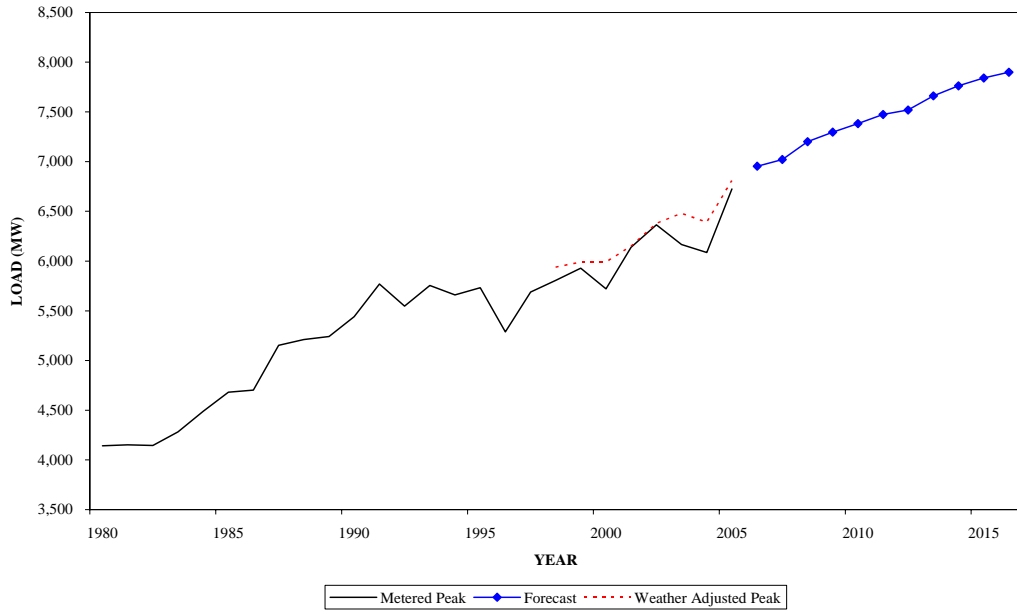
**SUMMER PEAK DEMAND FOR PENLC  
GEOGRAPHIC ZONE**



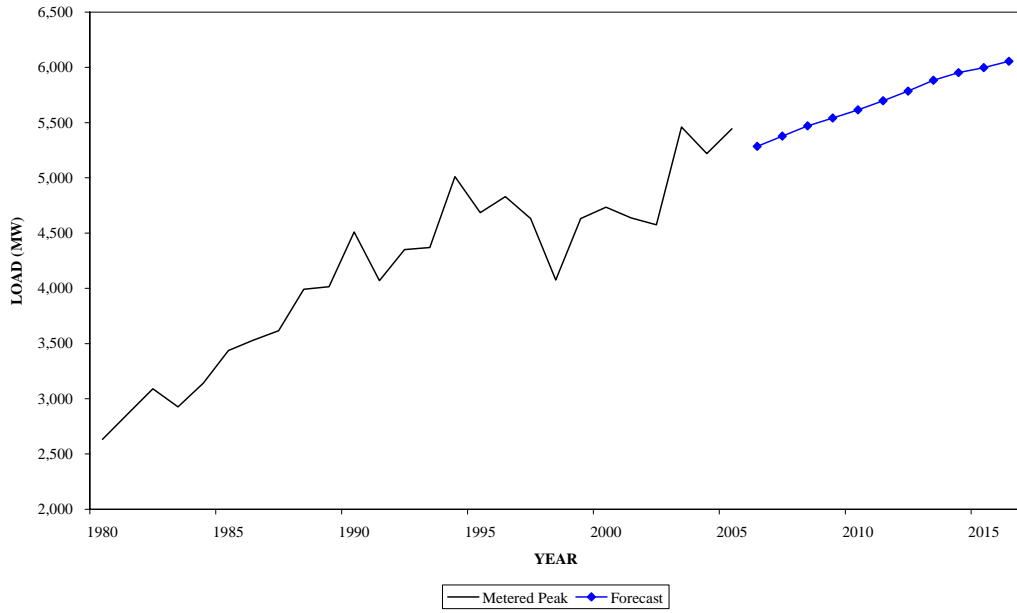
**WINTER PEAK DEMAND FOR PENLC  
GEOGRAPHIC ZONE**



**SUMMER PEAK DEMAND FOR PEPCO  
GEOGRAPHIC ZONE**

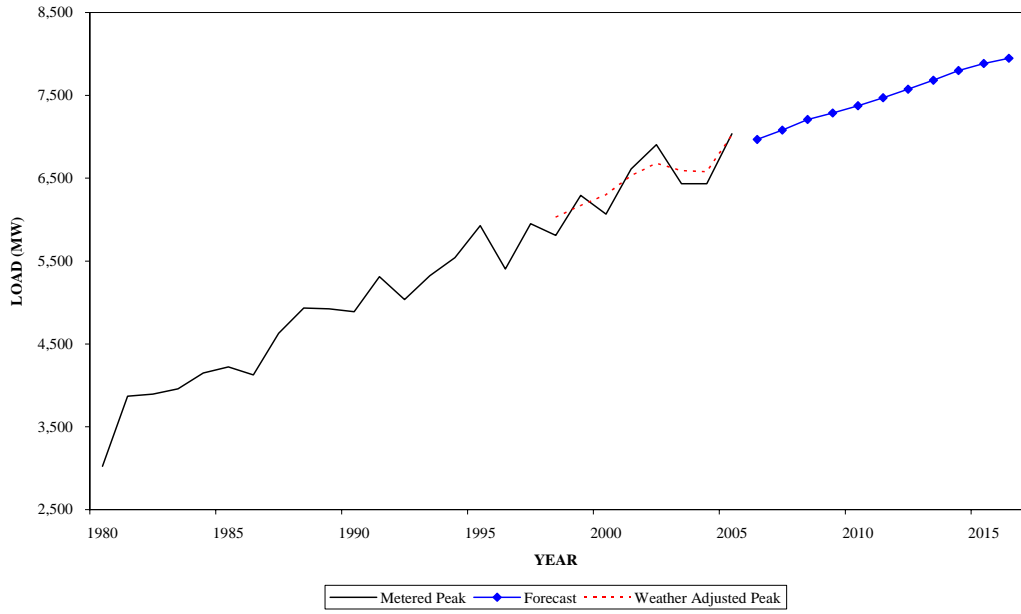


**WINTER PEAK DEMAND FOR PEPCO  
GEOGRAPHIC ZONE**

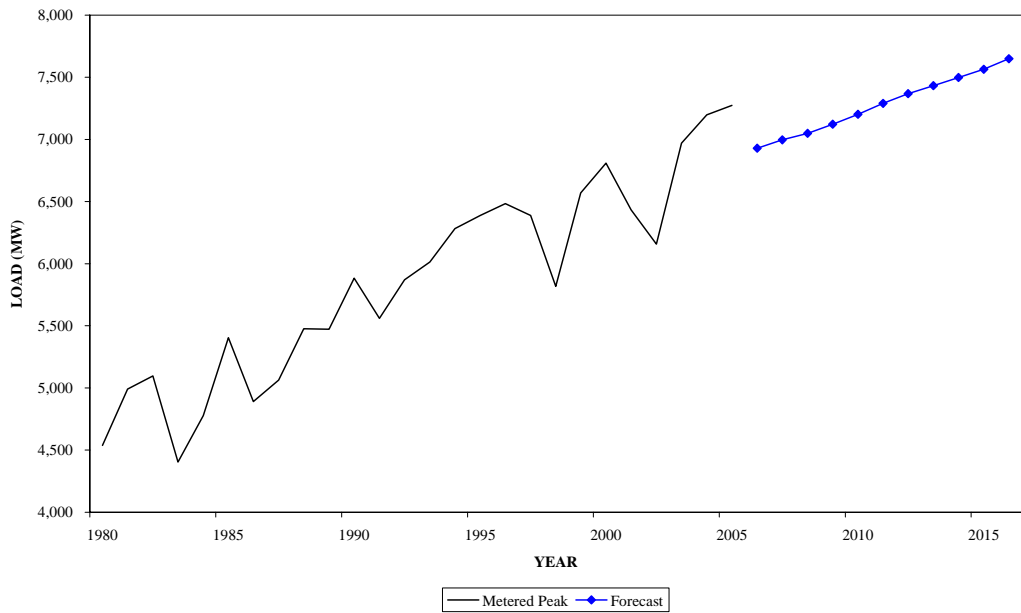




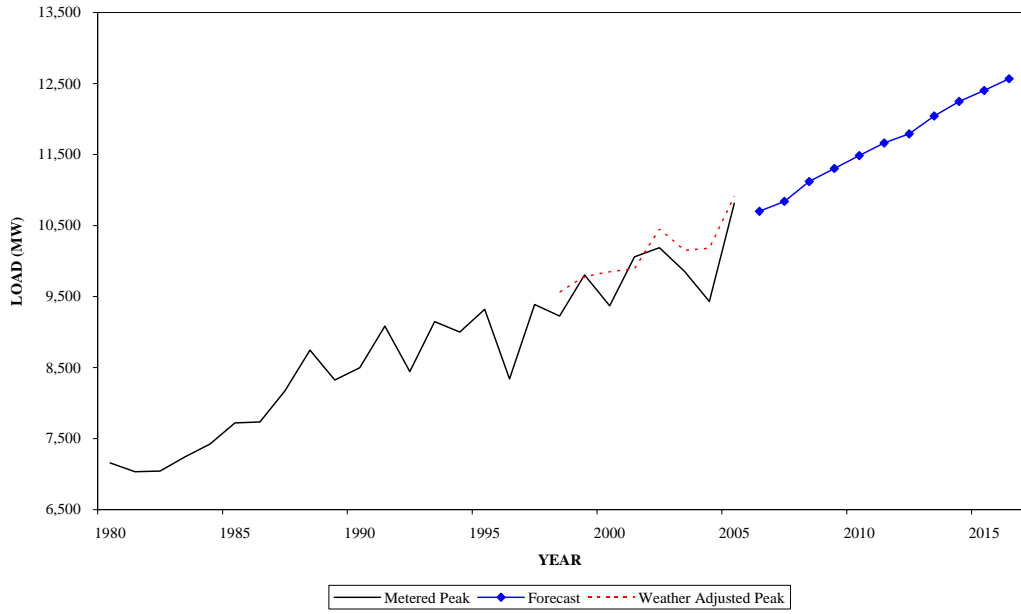
**SUMMER PEAK DEMAND FOR PL  
GEOGRAPHIC ZONE**



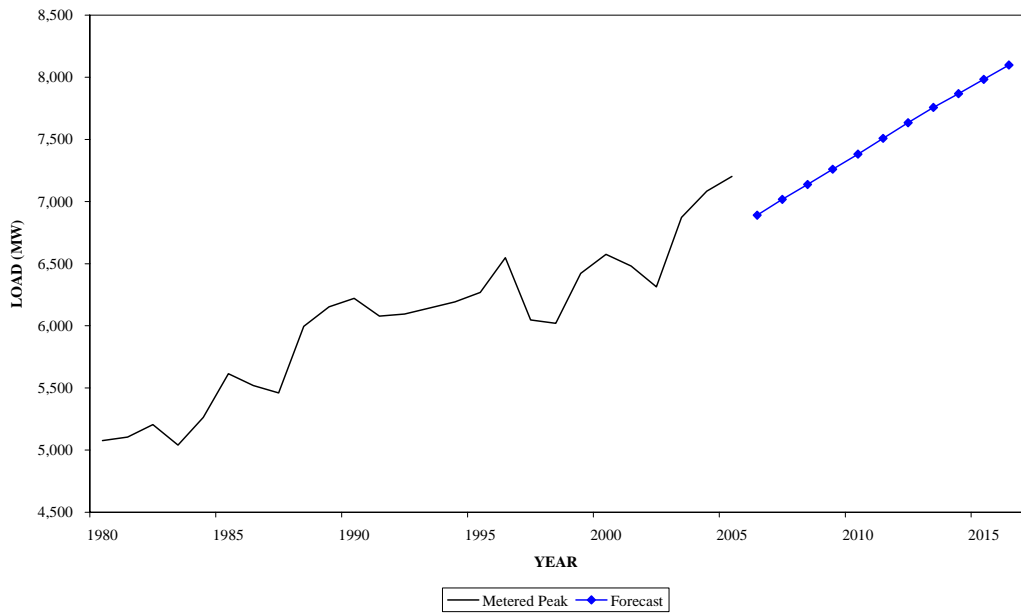
**WINTER PEAK DEMAND FOR PL  
GEOGRAPHIC ZONE**



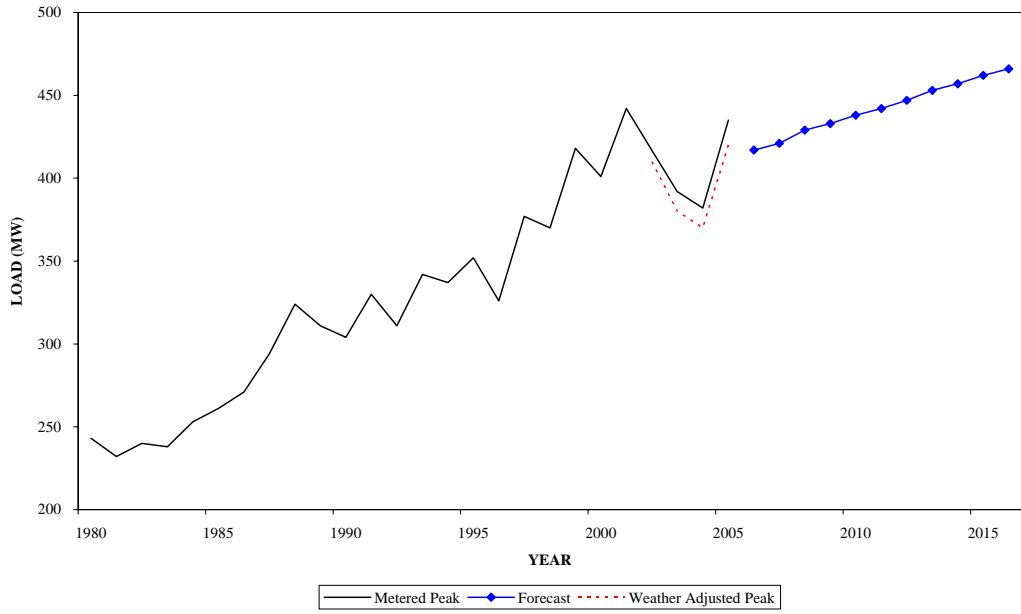
**SUMMER PEAK DEMAND FOR PS  
GEOGRAPHIC ZONE**



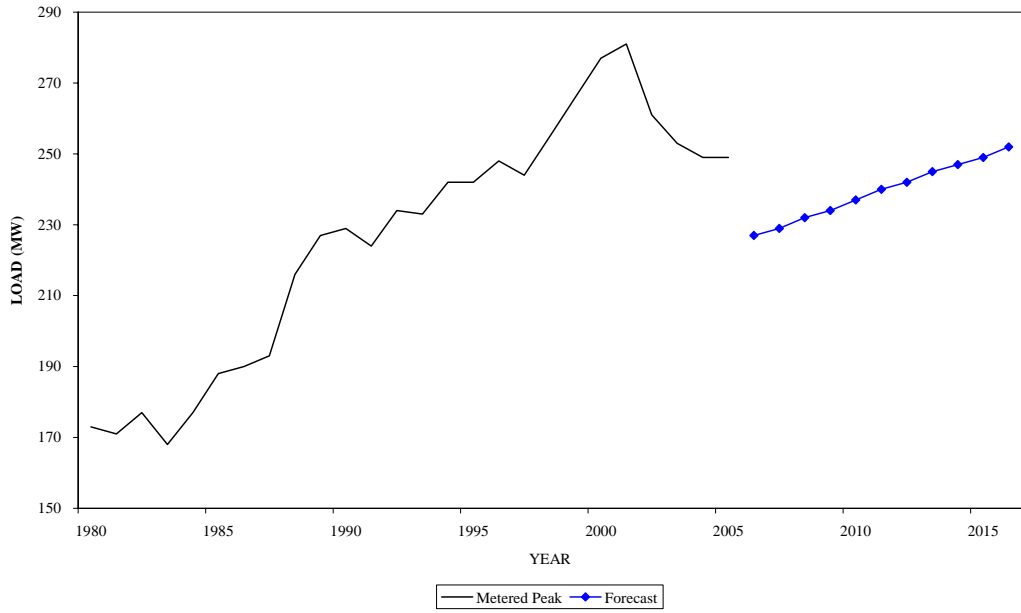
**WINTER PEAK DEMAND FOR PS  
GEOGRAPHIC ZONE**



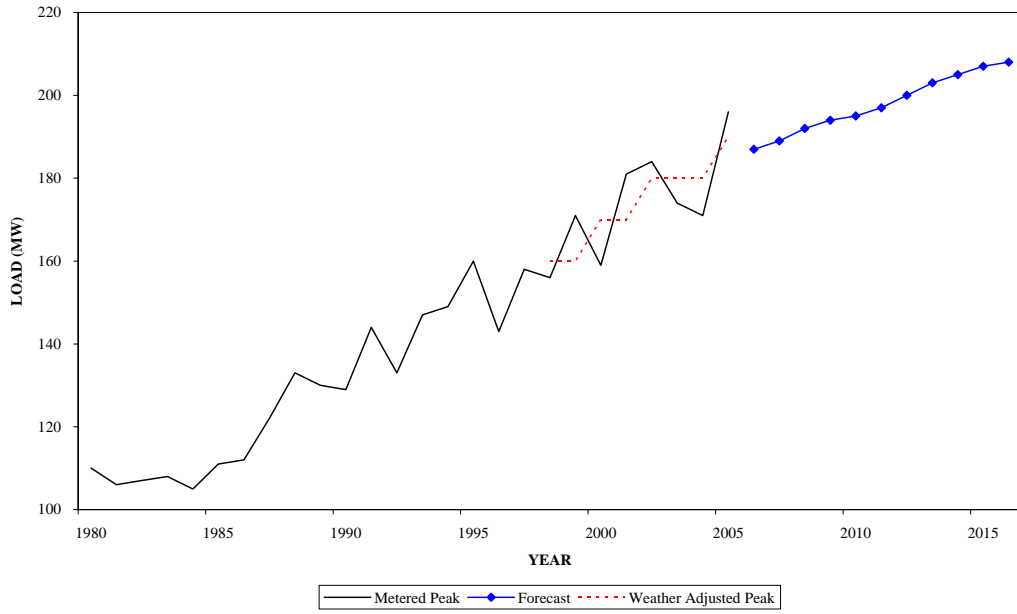
**SUMMER PEAK DEMAND FOR RECO  
GEOGRAPHIC ZONE**



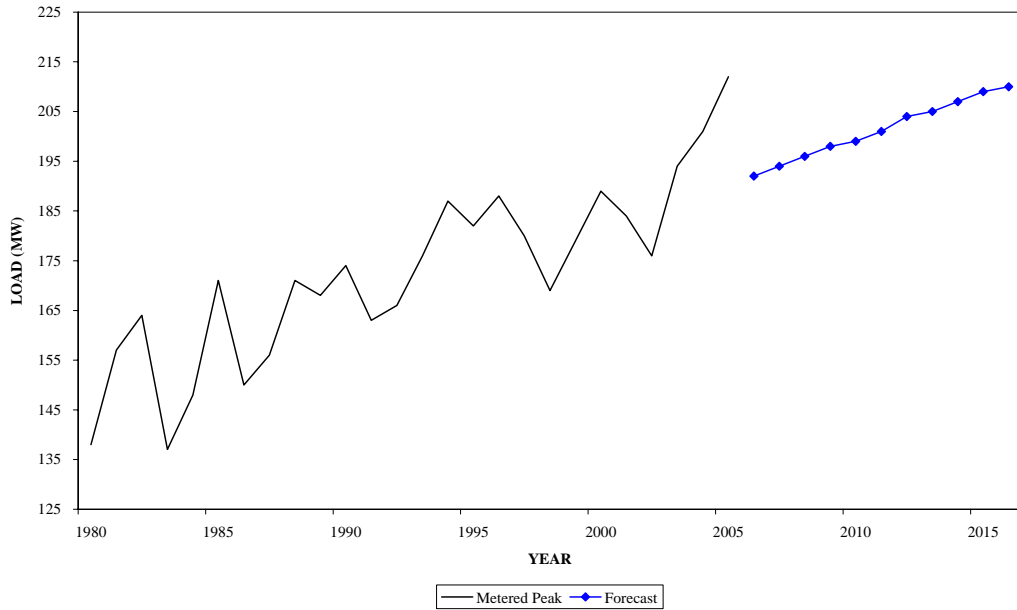
**WINTER PEAK DEMAND FOR RECO  
GEOGRAPHIC ZONE**



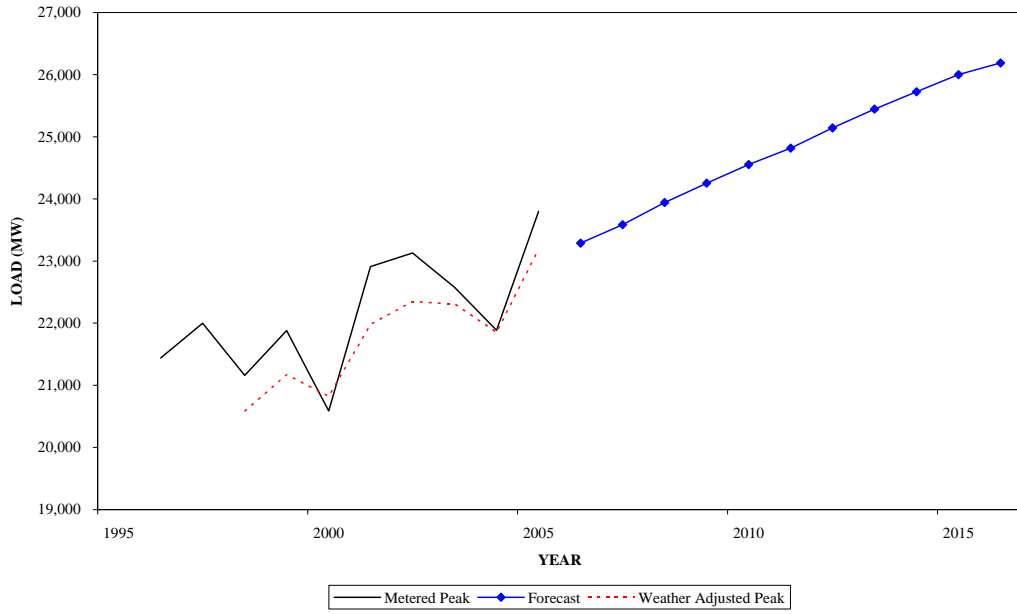
**SUMMER PEAK DEMAND FOR UGI  
GEOGRAPHIC ZONE**



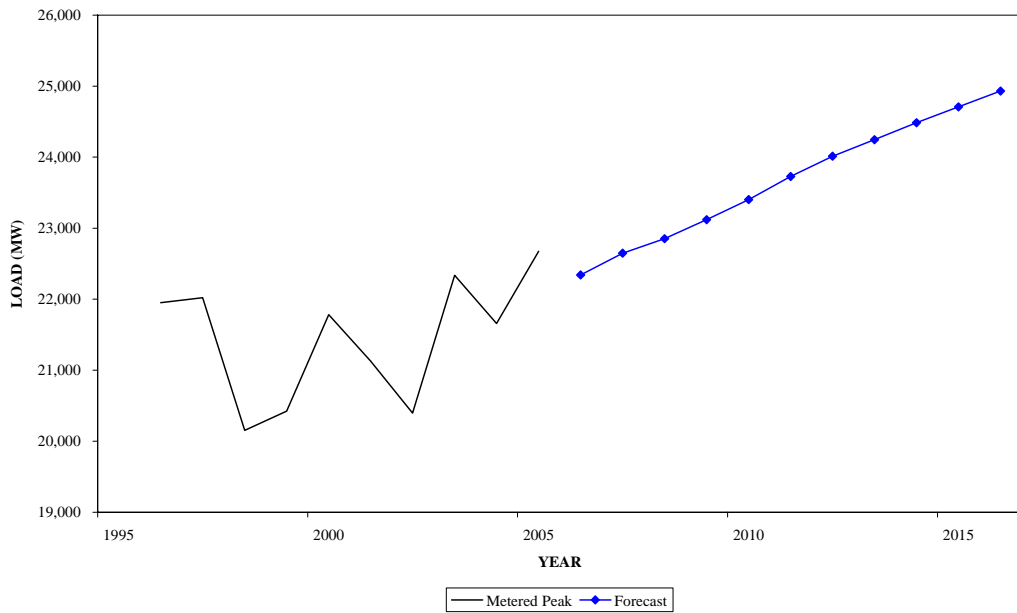
**WINTER PEAK DEMAND FOR UGI  
GEOGRAPHIC ZONE**



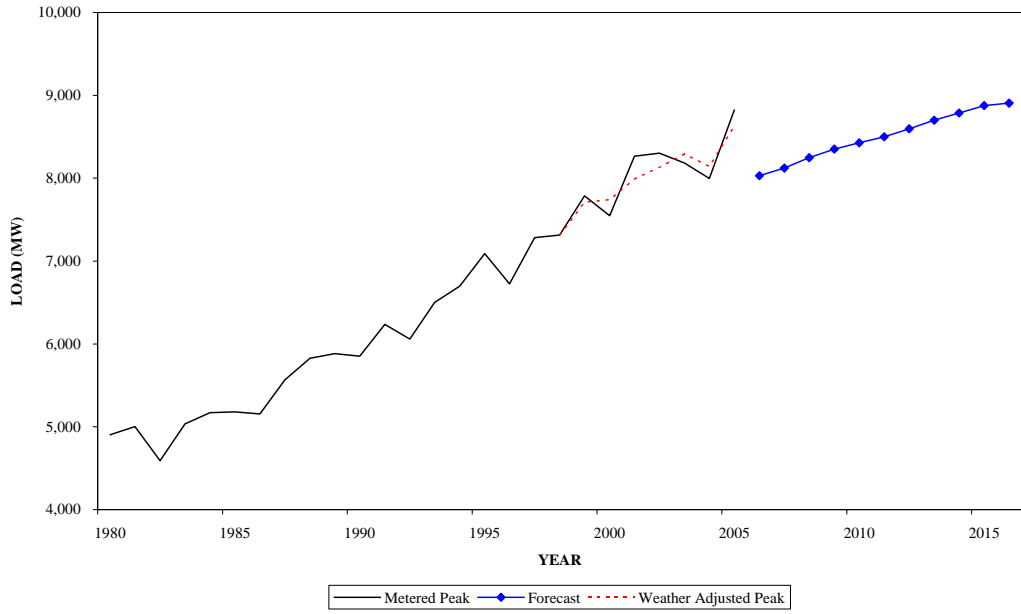
**SUMMER PEAK DEMAND FOR AEP  
GEOGRAPHIC ZONE**



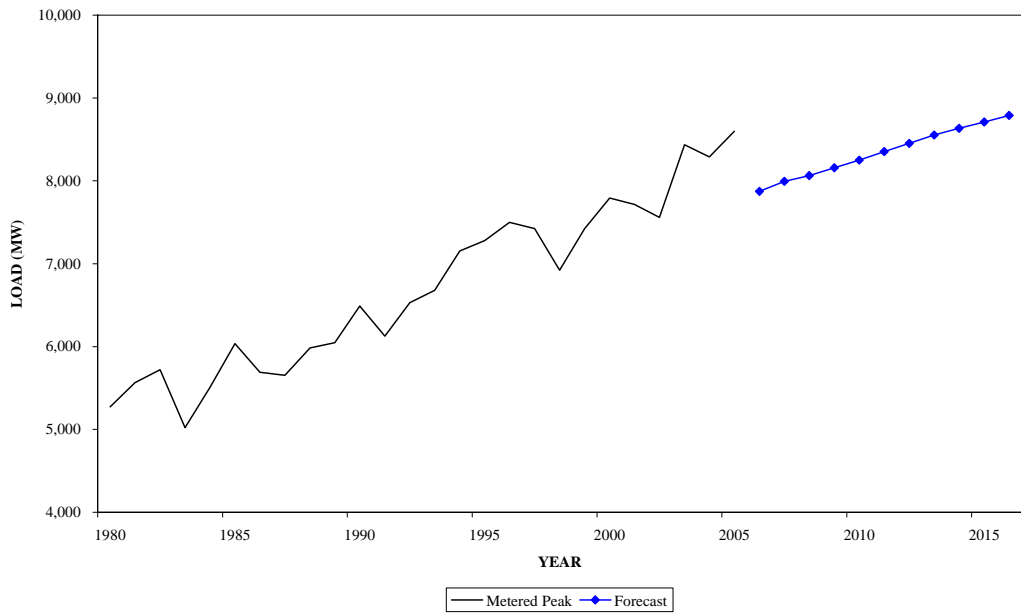
**WINTER PEAK DEMAND FOR AEP  
GEOGRAPHIC ZONE**



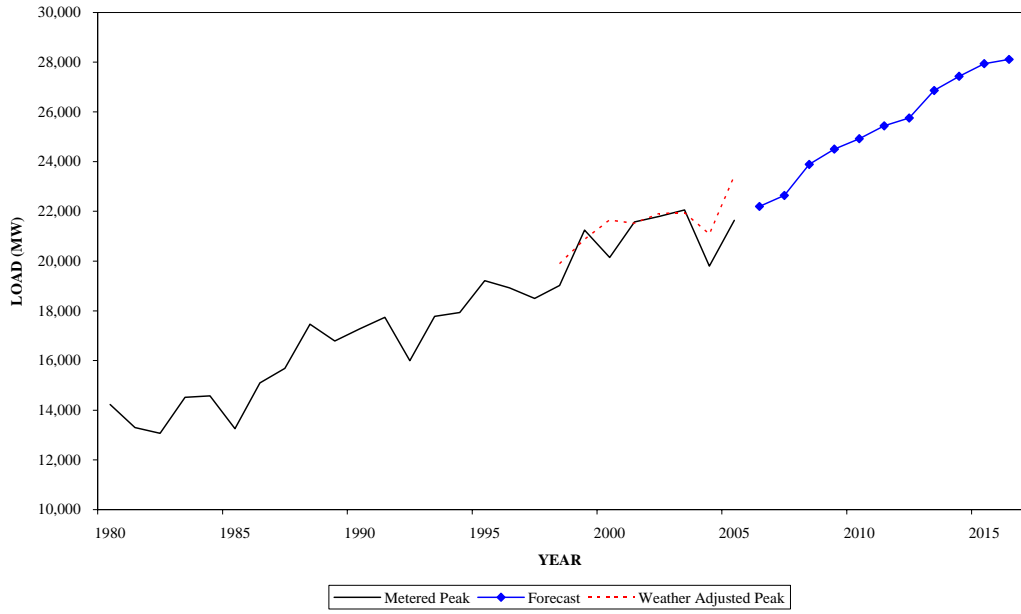
**SUMMER PEAK DEMAND FOR APS  
GEOGRAPHIC ZONE**



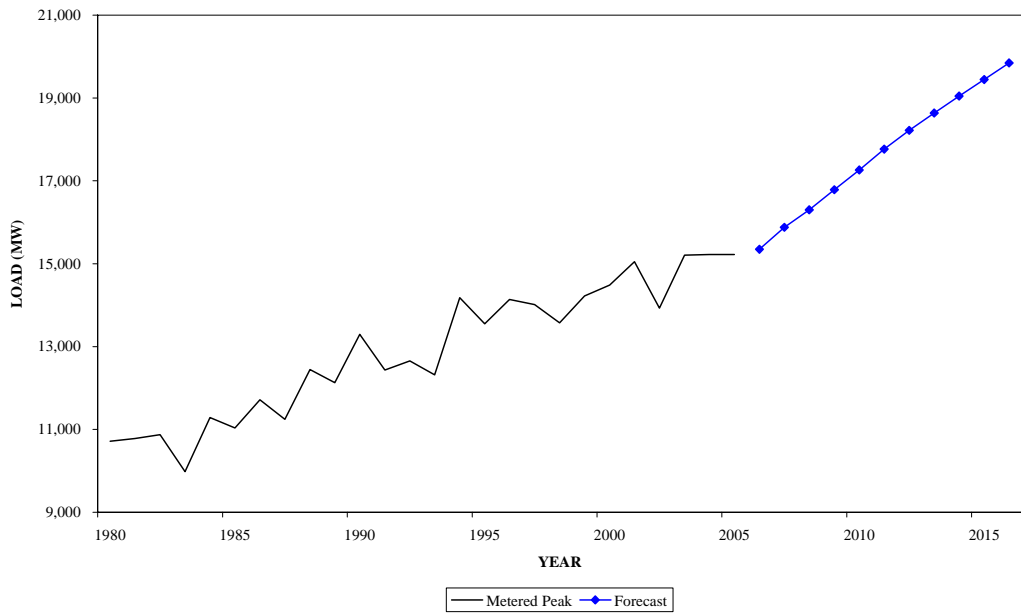
**WINTER PEAK DEMAND FOR APS  
GEOGRAPHIC ZONE**



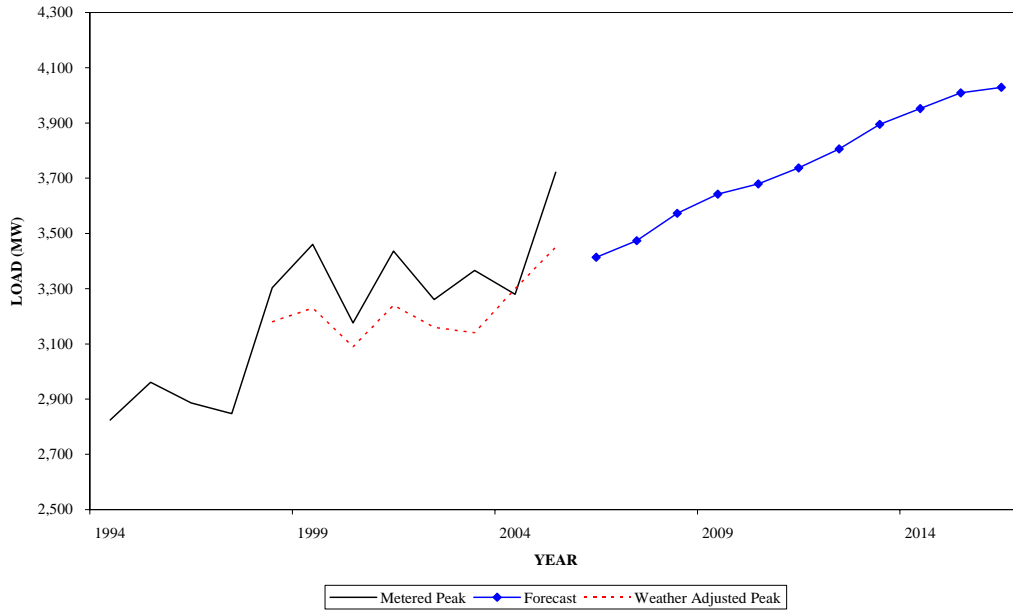
**SUMMER PEAK DEMAND FOR COMED  
GEOGRAPHIC ZONE**



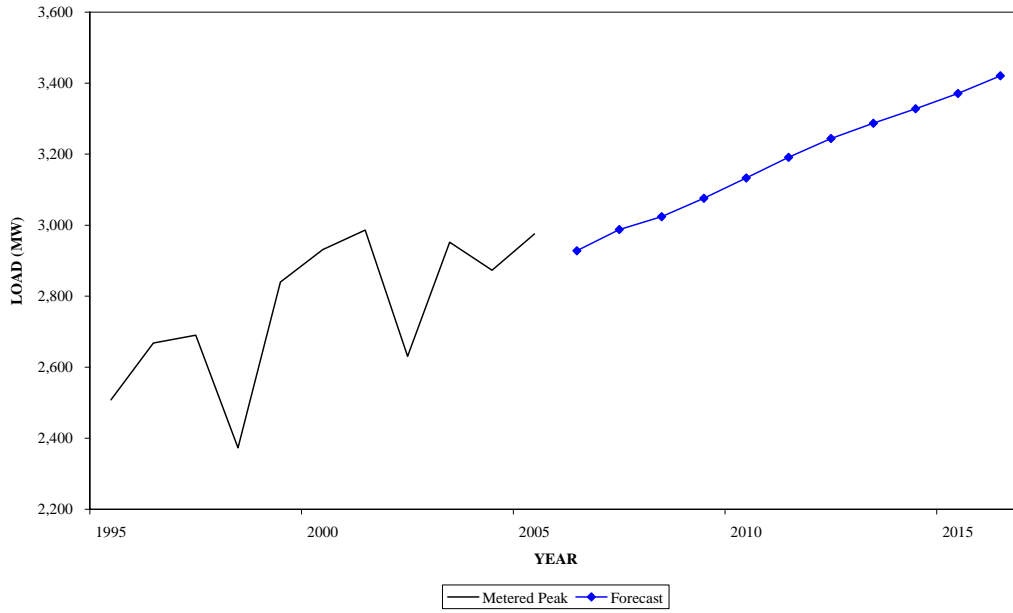
**WINTER PEAK DEMAND FOR COMED  
GEOGRAPHIC ZONE**



**SUMMER PEAK DEMAND FOR DAY  
GEOGRAPHIC ZONE**

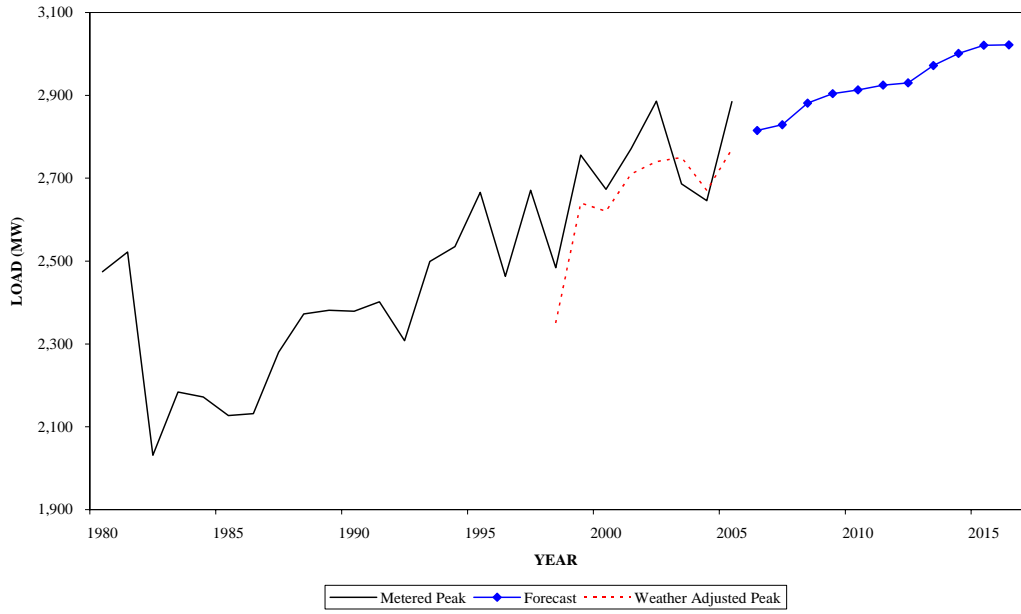


**WINTER PEAK DEMAND FOR DAY  
GEOGRAPHIC ZONE**

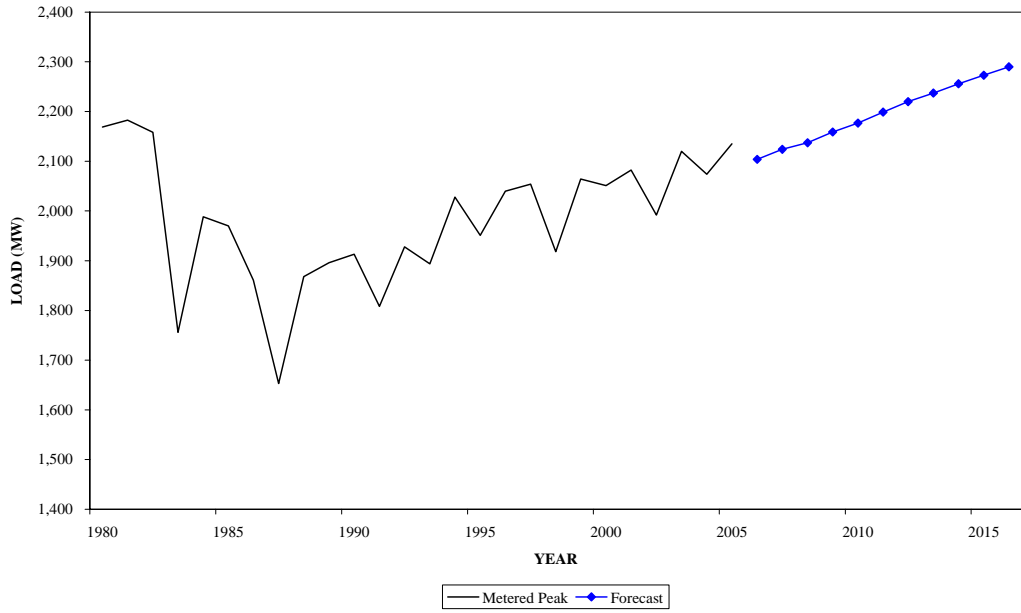




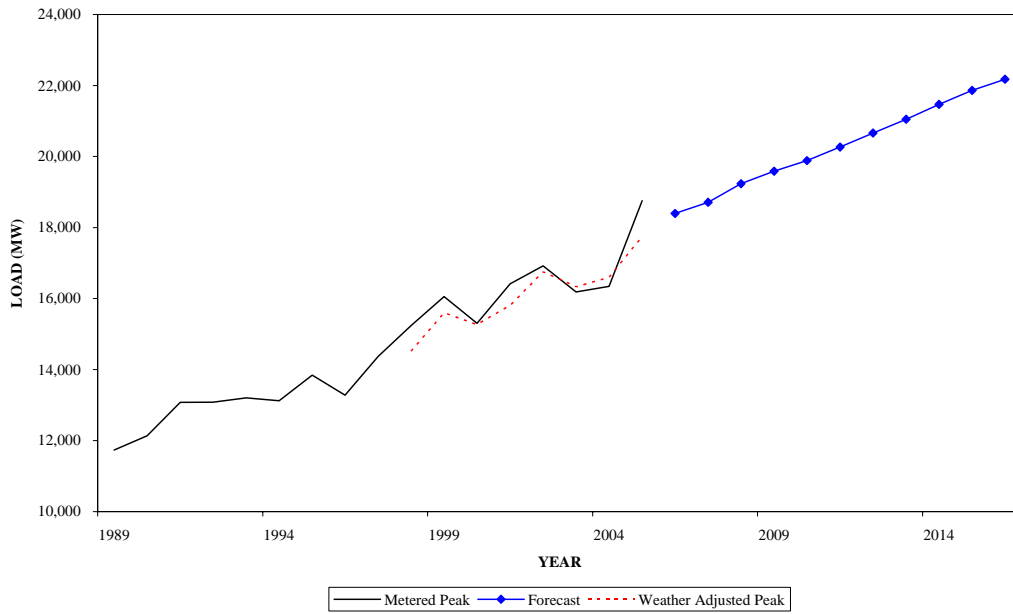
**SUMMER PEAK DEMAND FOR DLCO  
GEOGRAPHIC ZONE**



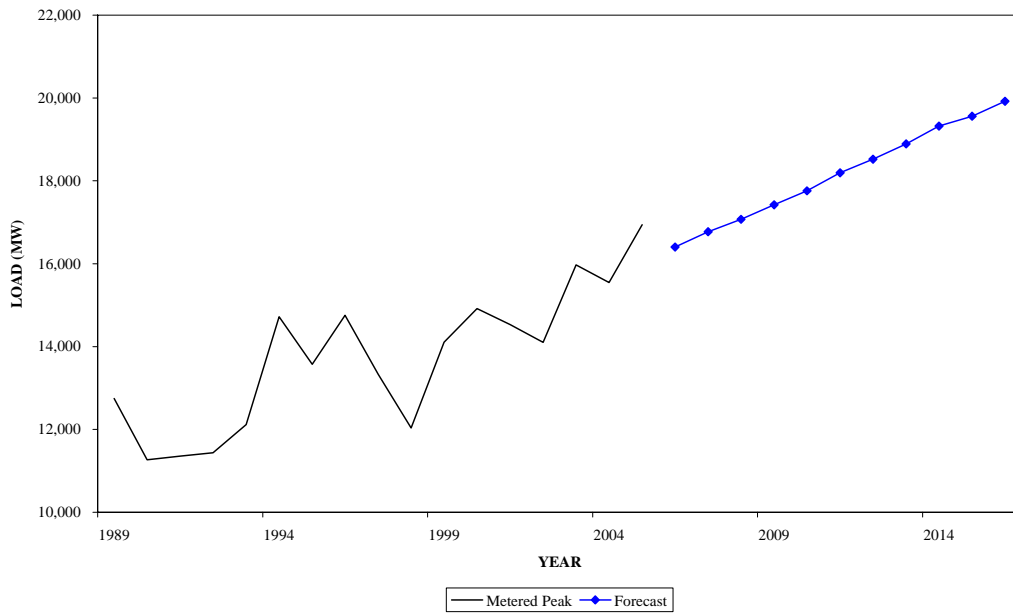
**WINTER PEAK DEMAND FOR DLCO  
GEOGRAPHIC ZONE**



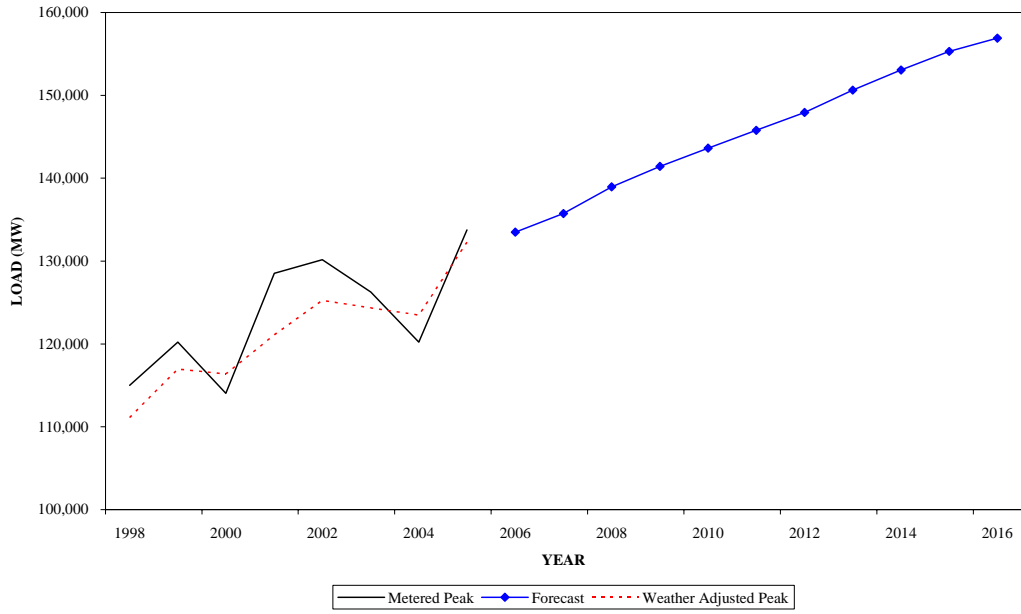
**SUMMER PEAK DEMAND FOR DOM  
GEOGRAPHIC ZONE**



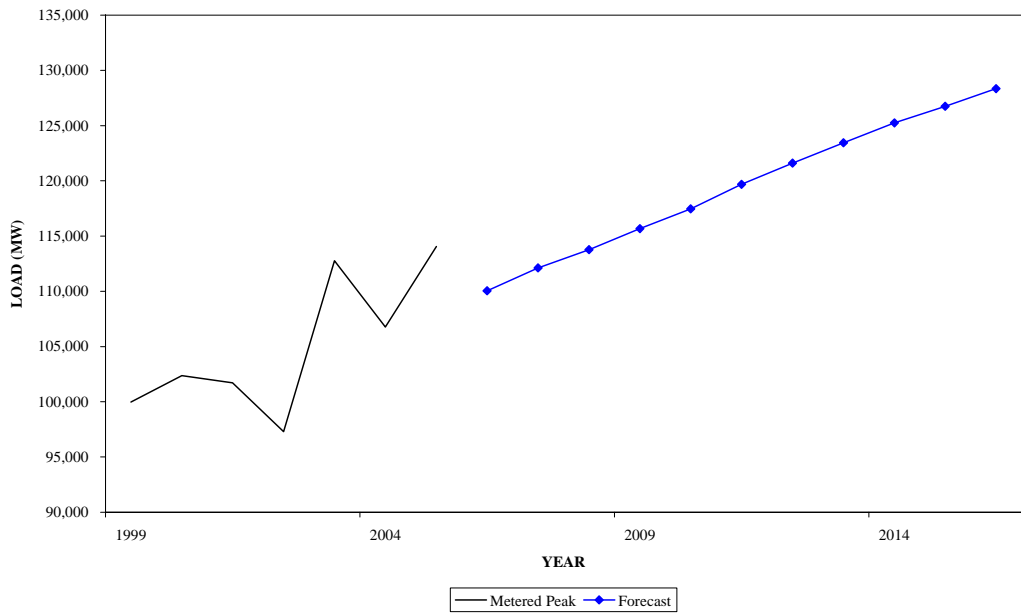
**WINTER PEAK DEMAND FOR DOM  
GEOGRAPHIC ZONE**



**SUMMER PEAK DEMAND FOR PJM RTO**



**WINTER PEAK DEMAND FOR PJM RTO**



**Table A-1**

**PJM MID-ATLANTIC  
SUMMER PEAK LOAD COMPARISONS OF THE CURRENT FORECAST  
TO THE FEBRUARY 2005 LOAD FORECAST REPORT**

**INCREASE OR DECREASE OVER PRIOR FORECAST**

	<b>2006</b>		<b>2011</b>		<b>2015</b>	
	<b>MW</b>	<b>%</b>	<b>MW</b>	<b>%</b>	<b>MW</b>	<b>%</b>
AE						
BGE						
DPL						
JCPL						
METED						
PECO						
PENLC						
PEPCO						
PL						
PS						
RECO						
UGI						
PJM MID-ATLANTIC						
FE/GPU						
PLGRP						

**This table intentionally left blank  
To be published in future**

**Table A-1**

**PJM WESTERN, PJM SOUTHERN AND PJM RTO  
SUMMER PEAK LOAD COMPARISONS OF THE CURRENT FORECAST  
TO THE FEBRUARY 2005 LOAD FORECAST REPORT**

**INCREASE OR DECREASE OVER PRIOR FORECAST**

	<b>2006</b>		<b>2011</b>		<b>2015</b>	
	<b>MW</b>	<b>%</b>	<b>MW</b>	<b>%</b>	<b>MW</b>	<b>%</b>
AEP						
APS						
COMED						
DAY						
DLCO						
PJM WESTERN						
DOM						
PJM RTO						

**This table intentionally left blank  
To be published in future**

Table A-2

**PJM MID-ATLANTIC  
WINTER PEAK LOAD COMPARISONS OF THE CURRENT FORECAST  
TO THE FEBRUARY 2005 LOAD FORECAST REPORT**

**INCREASE OR DECREASE OVER PRIOR FORECAST**

	2006		2011		2015	
	MW	%	MW	%	MW	%

AE  
BGE  
DPL  
JCPL  
METED  
PECO  
PENLC  
PEPCO  
PL  
PS  
RECO  
UGI

**This table intentionally left blank  
To be published in future**

PJM MID-ATLANTIC

FE/GPU  
PLGRP

Table A-2

**PJM WESTERN, PJM SOUTHERN AND PJM RTO  
WINTER PEAK LOAD COMPARISONS OF THE CURRENT FORECAST  
TO THE FEBRUARY 2005 LOAD FORECAST REPORT**

**INCREASE OR DECREASE OVER PRIOR FORECAST**

	2006		2011		2015	
	MW	%	MW	%	MW	%
AEP						
APS						
COMED						
DAY						
DLCO						
PJM WESTERN						
DOM						
PJM RTO						

**This table intentionally left blank  
To be published in future**

**PJM CONTROL AREA - FEBRUARY 2006  
UNRESTRICTED PEAK FORECAST: SUMMER/WINTER  
2006-2016**

**SUMMER UNRESTRICTED PEAK (MW)**

		<b>2006</b>	<b>2007</b>	<b>2008</b>	<b>2009</b>	<b>2010</b>	<b>2011</b>	<b>2012</b>	<b>2013</b>	<b>2014</b>	<b>2015</b>	<b>2016</b>	<b>ANNUAL GROWTH RATE %</b>
PJM MID-ATLANTIC		58,742	59,611	60,965	61,966	62,850	63,777	64,648	65,798	66,845	67,725	68,417	1.5%
	%		1.5%	2.3%	1.6%	1.4%	1.5%	1.4%	1.8%	1.6%	1.3%	1.0%	
PJM WESTERN		58,303	59,187	61,026	62,122	62,937	63,842	64,631	66,237	67,237	68,167	68,565	1.6%
	%		1.5%	3.1%	1.8%	1.3%	1.4%	1.2%	2.5%	1.5%	1.4%	0.6%	
PJM SOUTHERN		18,398	18,712	19,238	19,588	19,883	20,268	20,662	21,051	21,468	21,864	22,175	1.9%
	%		1.7%	2.8%	1.8%	1.5%	1.9%	1.9%	1.9%	2.0%	1.8%	1.4%	
PJM RTO		133,500	135,747	138,962	141,430	143,628	145,775	147,936	150,630	153,065	155,298	156,893	1.6%
	%		1.7%	2.4%	1.8%	1.6%	1.5%	1.5%	1.8%	1.6%	1.5%	1.0%	

**WINTER UNRESTRICTED PEAK (MW)**

		<b>05/06</b>	<b>06/07</b>	<b>07/08</b>	<b>08/09</b>	<b>09/10</b>	<b>10/11</b>	<b>11/12</b>	<b>12/13</b>	<b>13/14</b>	<b>14/15</b>	<b>15/16</b>	<b>ANNUAL GROWTH RATE %</b>
PJM MID-ATLANTIC		45,144	45,826	46,460	47,127	47,799	48,542	49,238	49,938	50,538	51,096	51,703	1.4%
	%		1.5%	1.4%	1.4%	1.4%	1.6%	1.4%	1.4%	1.2%	1.1%	1.2%	
PJM WESTERN		49,490	50,505	51,234	52,138	53,043	54,031	54,926	55,718	56,491	57,229	57,983	1.6%
	%		2.1%	1.4%	1.8%	1.7%	1.9%	1.7%	1.4%	1.4%	1.3%	1.3%	
PJM SOUTHERN		16,401	16,772	17,073	17,422	17,758	18,193	18,523	18,890	19,323	19,561	19,918	2.0%
	%		2.3%	1.8%	2.0%	1.9%	2.4%	1.8%	2.0%	2.3%	1.2%	1.8%	
PJM RTO		110,042	112,114	113,768	115,670	117,465	119,687	121,605	123,450	125,238	126,741	128,342	1.6%
	%		1.9%	1.5%	1.7%	1.6%	1.9%	1.6%	1.5%	1.4%	1.2%	1.3%	

**Note:**

Projected PJM seasonal peak load under normal peak weather conditions in the absence of any load reductions due to active load management, voltage reductions or voluntary curtailments.



Table B-1

SUMMER PEAK LOAD (MW) AND GROWTH RATES FOR  
EACH PJM MID-ATLANTIC GEOGRAPHIC ZONE AND SUM OF GEOGRAPHIC ZONES

	METERED 2005	UNRESTRICTED 2005	NORMAL 2005	2006	2007	2008	2009	2010	2011	2012	2013	2014	2015	2016	Annual Growth Rate %
AE	2,838	2,838	2,740	2,679	2,736	2,788	2,837	2,890	2,935	2,984	3,032	3,076	3,121	3,158	1.7%
%				-2.2%	2.1%	1.9%	1.8%	1.9%	1.6%	1.7%	1.6%	1.5%	1.5%	1.2%	
BGE	7,044	7,376	7,160	7,212	7,291	7,448	7,536	7,622	7,703	7,755	7,874	7,954	8,029	8,081	1.1%
%				0.7%	1.1%	2.2%	1.2%	1.1%	1.1%	0.7%	1.5%	1.0%	0.9%	0.6%	
DPL	4,174	4,246	4,070	3,994	4,040	4,150	4,244	4,313	4,403	4,491	4,587	4,700	4,792	4,870	2.0%
%				-1.9%	1.2%	2.7%	2.3%	1.6%	2.1%	2.0%	2.1%	2.5%	2.0%	1.6%	
JCPL	6,279	6,440	6,350	6,335	6,509	6,676	6,839	7,002	7,164	7,341	7,491	7,658	7,801	7,944	2.3%
%				-0.2%	2.7%	2.6%	2.4%	2.4%	2.3%	2.5%	2.0%	2.2%	1.9%	1.8%	
METED	2,850	2,862	2,790	2,773	2,823	2,882	2,931	2,978	3,027	3,081	3,130	3,183	3,224	3,260	1.6%
%				-0.6%	1.8%	2.1%	1.7%	1.6%	1.6%	1.8%	1.6%	1.7%	1.3%	1.1%	
PECO	8,626	8,847	8,620	8,337	8,431	8,588	8,742	8,814	8,904	9,029	9,161	9,292	9,418	9,450	1.3%
%				-3.3%	1.1%	1.9%	1.8%	0.8%	1.0%	1.4%	1.5%	1.4%	1.4%	0.3%	
PENLC	2,875	2,875	2,770	2,742	2,795	2,861	2,910	2,952	2,999	3,049	3,103	3,147	3,187	3,216	1.6%
%				-1.0%	1.9%	2.4%	1.7%	1.4%	1.6%	1.7%	1.8%	1.4%	1.3%	0.9%	
PEPCO	6,725	6,766	6,810	6,953	7,021	7,200	7,296	7,382	7,474	7,519	7,662	7,762	7,842	7,899	1.3%
%				2.1%	1.0%	2.5%	1.3%	1.2%	1.2%	0.6%	1.9%	1.3%	1.0%	0.7%	
PL	7,035	7,176	7,020	6,969	7,080	7,208	7,288	7,375	7,472	7,574	7,682	7,799	7,884	7,948	1.3%
%				-0.7%	1.6%	1.8%	1.1%	1.2%	1.3%	1.4%	1.4%	1.5%	1.1%	0.8%	
PS	10,815	11,122	10,910	10,701	10,841	11,121	11,304	11,485	11,662	11,791	12,044	12,246	12,401	12,566	1.6%
%				-1.9%	1.3%	2.6%	1.6%	1.6%	1.5%	1.1%	2.1%	1.7%	1.3%	1.3%	
RECO	435	435	420	417	421	429	433	438	442	447	453	457	462	466	1.1%
%				-0.7%	1.0%	1.9%	0.9%	1.2%	0.9%	1.1%	1.3%	0.9%	1.1%	0.9%	
UGI	196	196	190	187	189	192	194	195	197	200	203	205	207	208	1.1%
%				-1.6%	1.1%	1.6%	1.0%	0.5%	1.0%	1.5%	1.5%	1.0%	1.0%	0.5%	
DIVERSITY (-)				557	566	578	588	596	605	613	624	634	643	649	
PJM MID-ATLANTIC	59,042	60,520	59,330	58,742	59,611	60,965	61,966	62,850	63,777	64,648	65,798	66,845	67,725	68,417	1.5%
%				-1.0%	1.5%	2.3%	1.6%	1.4%	1.5%	1.4%	1.8%	1.6%	1.3%	1.0%	
FE/GPU	11,685	11,752	11,783	11,724	11,998	12,287	12,545	12,794	13,049	13,327	13,578	13,839	14,060	14,266	2.0%
%				-0.5%	2.3%	2.4%	2.1%	2.0%	2.0%	2.1%	1.9%	1.9%	1.6%	1.5%	
PLGRP	7,230	7,361	7,206	7,152	7,265	7,396	7,478	7,566	7,665	7,770	7,881	8,000	8,087	8,152	1.3%
%				-0.7%	1.6%	1.8%	1.1%	1.2%	1.3%	1.4%	1.4%	1.5%	1.1%	0.8%	

Note:  
Normal 2005 and all forecast values are non-coincident as estimated by PJM staff.  
Normal 2005 and all forecast values represent unrestricted peaks.  
Forecasted and weather-normalized values for FE/GPU and PLGRP are calculated as the diversified sum of zonal non-coincident values.

Table B-1

SUMMER PEAK LOAD (MW) AND GROWTH RATES FOR  
EACH PJM WESTERN AND PJM SOUTHERN GEOGRAPHIC ZONE AND SUM OF GEOGRAPHIC ZONES

	METERED 2005	UNRESTRICTED 2005	NORMAL 2005	2006	2007	2008	2009	2010	2011	2012	2013	2014	2015	2016	Annual Growth Rate %
AEP	23,802	23,921	23,190	23,290	23,585	23,943	24,253	24,553	24,817	25,142	25,447	25,724	26,001	26,189	1.2%
%				0.4%	1.3%	1.5%	1.3%	1.2%	1.1%	1.3%	1.2%	1.1%	1.1%	0.7%	
APS	8,824	8,824	8,630	8,030	8,123	8,248	8,352	8,427	8,499	8,596	8,700	8,786	8,876	8,905	1.0%
%				-7.0%	1.2%	1.5%	1.3%	0.9%	0.9%	1.1%	1.2%	1.0%	1.0%	0.3%	
COMED	21,635	21,635	23,420	22,194	22,638	23,888	24,505	24,920	25,441	25,753	26,859	27,435	27,944	28,114	2.4%
%				-5.2%	2.0%	5.5%	2.6%	1.7%	2.1%	1.2%	4.3%	2.1%	1.9%	0.6%	
DAY	3,722	3,725	3,450	3,414	3,474	3,573	3,642	3,679	3,737	3,806	3,895	3,952	4,009	4,029	1.7%
%				-1.0%	1.8%	2.8%	1.9%	1.0%	1.6%	1.8%	2.3%	1.5%	1.4%	0.5%	
DLCO	2,885	2,885	2,770	2,815	2,829	2,881	2,904	2,913	2,925	2,930	2,972	3,001	3,021	3,022	0.7%
%				1.6%	0.5%	1.8%	0.8%	0.3%	0.4%	0.2%	1.4%	1.0%	0.7%	0.0%	
DIVERSITY (-)				1,440	1,462	1,507	1,534	1,555	1,577	1,596	1,636	1,661	1,684	1,694	
PJM WESTERN	59,660	59,760		58,303	59,187	61,026	62,122	62,937	63,842	64,631	66,237	67,237	68,167	68,565	1.6%
%					1.5%	3.1%	1.8%	1.3%	1.4%	1.2%	2.5%	1.5%	1.4%	0.6%	
DOM	18,754	19,028	17,740	18,398	18,712	19,238	19,588	19,883	20,268	20,662	21,051	21,468	21,864	22,175	1.9%
%				3.7%	1.7%	2.8%	1.8%	1.5%	1.9%	1.9%	1.9%	2.0%	1.8%	1.4%	
DIVERSITY (-)				1,943	1,763	2,266	2,246	2,042	2,112	2,004	2,456	2,485	2,459	2,264	
PJM RTO	133,761	134,219	132,270	133,500	135,747	138,962	141,430	143,628	145,775	147,936	150,630	153,065	155,298	156,893	1.6%
%				0.9%	1.7%	2.4%	1.8%	1.6%	1.5%	1.5%	1.8%	1.6%	1.5%	1.0%	

Note:  
Normal 2005 and all forecast values are non-coincident as estimated by PJM staff.  
Normal 2005 and all forecast values represent unrestricted peaks.

Table B-2

WINTER PEAK LOAD (MW) AND GROWTH RATES FOR  
EACH PJM MID-ATLANTIC GEOGRAPHIC ZONE AND SUM OF GEOGRAPHIC ZONES

	METERED 04/05	UNRESTRICTED 04/05	NORMAL 04/05	05/06	06/07	07/08	08/09	09/10	10/11	11/12	12/13	13/14	14/15	15/16	Annual Growth Rate %
AE	1,863	1,863	1,670	1,756	1,788	1,818	1,845	1,872	1,905	1,934	1,964	1,987	2,008	2,030	1.5%
%				5.1%	1.8%	1.7%	1.5%	1.5%	1.8%	1.5%	1.6%	1.2%	1.1%	1.1%	
BGE	6,147	6,147	5,780	5,836	5,917	5,976	6,032	6,088	6,163	6,222	6,281	6,325	6,363	6,409	0.9%
%				1.0%	1.4%	1.0%	0.9%	0.9%	1.2%	1.0%	0.9%	0.7%	0.6%	0.7%	
DPL	3,486	3,486	3,240	3,282	3,290	3,347	3,396	3,455	3,532	3,596	3,668	3,729	3,773	3,837	1.6%
%				1.3%	0.2%	1.7%	1.5%	1.7%	2.2%	1.8%	2.0%	1.7%	1.2%	1.7%	
JCPL	4,153	4,153	3,770	3,872	3,970	4,058	4,146	4,236	4,329	4,422	4,511	4,594	4,678	4,763	2.1%
%				2.7%	2.5%	2.2%	2.2%	2.2%	2.2%	2.1%	2.0%	1.8%	1.8%	1.8%	
METED	2,529	2,529	2,390	2,467	2,514	2,543	2,585	2,624	2,663	2,703	2,737	2,770	2,805	2,837	1.4%
%				3.2%	1.9%	1.2%	1.7%	1.5%	1.5%	1.5%	1.3%	1.2%	1.3%	1.1%	
PECO	6,838	6,838	6,280	6,381	6,461	6,529	6,623	6,708	6,796	6,874	6,968	7,041	7,115	7,181	1.2%
%				1.6%	1.3%	1.1%	1.4%	1.3%	1.3%	1.1%	1.4%	1.0%	1.1%	0.9%	
PENLC	2,829	2,829	2,630	2,702	2,755	2,799	2,848	2,895	2,942	2,989	3,033	3,074	3,114	3,153	1.6%
%				2.7%	2.0%	1.6%	1.8%	1.7%	1.6%	1.6%	1.5%	1.4%	1.3%	1.3%	
PEPCO	5,443	5,443	5,110	5,285	5,378	5,471	5,542	5,616	5,698	5,785	5,884	5,953	5,998	6,055	1.4%
%				3.4%	1.8%	1.7%	1.3%	1.3%	1.5%	1.5%	1.7%	1.2%	0.8%	1.0%	
PL	7,274	7,274	6,870	6,929	6,997	7,049	7,123	7,202	7,290	7,368	7,432	7,499	7,564	7,650	1.0%
%				0.9%	1.0%	0.7%	1.0%	1.1%	1.2%	1.1%	0.9%	0.9%	0.9%	1.1%	
PS	7,201	7,201	6,620	6,890	7,018	7,137	7,260	7,382	7,509	7,635	7,757	7,868	7,984	8,099	1.6%
%				4.1%	1.9%	1.7%	1.7%	1.7%	1.7%	1.7%	1.6%	1.4%	1.5%	1.4%	
RECO	249	249	220	227	229	232	234	237	240	242	245	247	249	252	1.1%
%				3.2%	0.9%	1.3%	0.9%	1.3%	1.3%	0.8%	1.2%	0.8%	0.8%	1.2%	
UGI	212	212	190	192	194	196	198	199	201	204	205	207	209	210	0.9%
%				1.1%	1.0%	1.0%	1.0%	0.5%	1.0%	1.5%	0.5%	1.0%	1.0%	0.5%	
DIVERSITY (-)				675	685	695	705	715	726	736	747	756	764	773	
PJM MID-ATLANTIC	47,850	47,850	45,060	45,144	45,826	46,460	47,127	47,799	48,542	49,238	49,938	50,538	51,096	51,703	1.4%
%				0.2%	1.5%	1.4%	1.4%	1.4%	1.6%	1.4%	1.4%	1.2%	1.1%	1.2%	
FE/GPU	9,512	9,512	8,730	8,980	9,176	9,336	9,514	9,689	9,867	10,045	10,211	10,367	10,525	10,680	1.7%
%				2.9%	2.2%	1.7%	1.9%	1.8%	1.8%	1.8%	1.7%	1.5%	1.5%	1.5%	
PLGRP	7,486	7,486	7,056	7,117	7,187	7,241	7,317	7,397	7,487	7,568	7,633	7,702	7,769	7,856	1.0%
%				0.9%	1.0%	0.8%	1.0%	1.1%	1.2%	1.1%	0.9%	0.9%	0.9%	1.1%	

Note:  
Normal 04/05 and all forecast values are non-coincident as estimated by PJM staff.  
Normal 04/05 and all forecast values represent unrestricted peaks.  
Forecasted values for PLGRP and FE/GPU are calculated as the diversified sum of zonal non-coincident forecasts.

Table B-2

WINTER PEAK LOAD (MW) AND GROWTH RATES FOR  
EACH PJM WESTERN AND PJM SOUTHERN GEOGRAPHIC ZONE AND SUM OF GEOGRAPHIC ZONES

	METERED 04/05	UNRESTRICTED 04/05	NORMAL 04/05	05/06	06/07	07/08	08/09	09/10	10/11	11/12	12/13	13/14	14/15	15/16	Annual Growth Rate %
AEP	22,675	22,675	20,750	22,341	22,649	22,853	23,121	23,404	23,729	24,014	24,246	24,486	24,709	24,932	1.1%
%				7.7%	1.4%	0.9%	1.2%	1.2%	1.4%	1.2%	1.0%	1.0%	0.9%	0.9%	
APS	8,598	8,598	8,360	7,872	7,993	8,064	8,159	8,251	8,353	8,453	8,553	8,635	8,710	8,790	1.1%
%				-5.8%	1.5%	0.9%	1.2%	1.1%	1.2%	1.2%	1.0%	0.9%	0.9%		
COMED	15,222	15,222	14,960	15,350	15,879	16,300	16,787	17,262	17,765	18,221	18,639	19,047	19,444	19,845	2.6%
%				2.6%	3.4%	2.7%	3.0%	2.8%	2.9%	2.6%	2.3%	2.2%	2.1%	2.1%	
DAY	2,975	2,975	2,790	2,928	2,988	3,024	3,076	3,133	3,191	3,244	3,287	3,328	3,371	3,421	1.6%
%				4.9%	2.0%	1.2%	1.7%	1.9%	1.9%	1.7%	1.3%	1.2%	1.3%	1.5%	
DLCO	2,135	2,135	2,030	2,104	2,124	2,137	2,159	2,177	2,199	2,220	2,237	2,256	2,273	2,290	0.9%
%				3.6%	1.0%	0.6%	1.0%	0.8%	1.0%	1.0%	0.8%	0.8%	0.8%	0.7%	
DIVERSITY (-)				1,105	1,128	1,144	1,164	1,184	1,206	1,226	1,244	1,261	1,278	1,295	
PJM WESTERN	50,381	50,381		49,490	50,505	51,234	52,138	53,043	54,031	54,926	55,718	56,491	57,229	57,983	1.6%
%					2.1%	1.4%	1.8%	1.7%	1.9%	1.7%	1.4%	1.4%	1.3%	1.3%	
DOM	16,939	16,939	15,750	16,401	16,772	17,073	17,422	17,758	18,193	18,523	18,890	19,323	19,561	19,918	2.0%
%				4.1%	2.3%	1.8%	2.0%	1.9%	2.4%	1.8%	2.0%	2.3%	1.2%	1.8%	
DIVERSITY (-)				993	989	1,000	1,017	1,135	1,079	1,082	1,096	1,114	1,145	1,262	
PJM RTO	114,260	114,260	106,270	110,042	112,114	113,768	115,670	117,465	119,687	121,605	123,450	125,238	126,741	128,342	1.6%
%				3.5%	1.9%	1.5%	1.7%	1.6%	1.9%	1.6%	1.5%	1.4%	1.2%	1.3%	

Note:  
Normal 04/05 and all forecast values are non-coincident as estimated by PJM staff.  
Normal 04/05 and all forecast values represent unrestricted peaks.

**Table B-3****SPRING (APRIL) PEAK LOAD (MW) AND GROWTH RATES FOR  
EACH PJM MID-ATLANTIC GEOGRAPHIC ZONE AND SUM OF GEOGRAPHIC ZONES**

	<b>2006</b>	<b>2007</b>	<b>2008</b>	<b>2009</b>	<b>2010</b>	<b>2011</b>	<b>2012</b>	<b>2013</b>	<b>2014</b>	<b>2015</b>	<b>2016</b>
AE	1,505	1,547	1,591	1,622	1,653	1,678	1,708	1,758	1,786	1,811	1,822
BGE	4,701	4,776	4,841	4,904	4,956	5,017	5,060	5,124	5,166	5,222	5,257
DPL	2,589	2,619	2,675	2,727	2,767	2,810	2,877	2,946	2,989	3,042	3,065
JCPL	3,259	3,356	3,484	3,571	3,621	3,681	3,761	3,894	3,969	4,043	4,064
METED	2,095	2,149	2,182	2,220	2,253	2,284	2,325	2,366	2,394	2,425	2,446
PECO	5,366	5,448	5,610	5,681	5,706	5,756	5,835	6,007	6,071	6,123	6,119
PENLC	2,386	2,438	2,484	2,532	2,572	2,613	2,664	2,708	2,748	2,787	2,815
PEPCO	4,389	4,498	4,591	4,677	4,711	4,730	4,809	4,931	4,960	5,020	5,018
PL	5,640	5,736	5,824	5,895	5,940	6,024	6,110	6,217	6,277	6,341	6,390
PS	6,164	6,276	6,424	6,544	6,650	6,735	6,833	6,973	7,064	7,162	7,247
RECO	200	201	207	210	209	207	208	215	216	217	216
UGI	152	155	157	159	160	161	164	167	168	170	171
DIVERSITY (-)	1,253	1,278	1,306	1,328	1,343	1,359	1,381	1,412	1,428	1,446	1,455
PJM MID-ATLANTIC	37,193	37,921	38,764	39,414	39,855	40,337	40,973	41,894	42,380	42,917	43,175
FE/GPU	7,535	7,733	7,934	8,103	8,223	8,351	8,519	8,731	8,870	9,010	9,078
PLGRP	5,790	5,889	5,979	6,052	6,098	6,183	6,272	6,382	6,443	6,509	6,559

**Table B-3**

**SPRING (APRIL) PEAK LOAD (MW) AND GROWTH RATES FOR  
EACH PJM WESTERN AND PJM SOUTHERN GEOGRAPHIC ZONE AND SUM OF GEOGRAPHIC ZONES**

	<b>2006</b>	<b>2007</b>	<b>2008</b>	<b>2009</b>	<b>2010</b>	<b>2011</b>	<b>2012</b>	<b>2013</b>	<b>2014</b>	<b>2015</b>	<b>2016</b>
AEP	18,516	18,835	19,086	19,304	19,524	19,782	20,048	20,349	20,559	20,738	20,906
APS	6,458	6,564	6,633	6,712	6,792	6,854	6,946	7,042	7,120	7,177	7,220
COMED	13,652	14,150	14,812	15,273	15,703	16,050	16,508	17,164	17,540	17,916	18,157
DAY	2,545	2,609	2,649	2,707	2,759	2,807	2,871	2,914	2,963	3,010	3,046
DLCO	1,902	1,924	1,939	1,959	1,973	1,988	2,010	2,030	2,042	2,061	2,072
DIVERSITY (-)	1,054	1,079	1,104	1,124	1,144	1,162	1,184	1,211	1,229	1,245	1,258
PJM WESTERN	42,019	43,003	44,015	44,831	45,607	46,319	47,199	48,288	48,995	49,657	50,143
DOM	12,662	12,957	13,256	13,539	13,798	14,068	14,339	14,684	14,960	15,223	15,441
DIVERSITY (-)	1,056	1,079	1,104	1,124	1,141	1,158	1,179	1,206	1,223	1,239	1,250
PJM RTO	90,817	92,802	94,931	96,659	98,119	99,566	101,333	103,660	105,112	106,557	107,509

**Table B-4**

**FALL (OCTOBER) PEAK LOAD (MW) AND GROWTH RATES FOR  
EACH PJM MID-ATLANTIC GEOGRAPHIC ZONE AND SUM OF GEOGRAPHIC ZONES**

	<b>2006</b>	<b>2007</b>	<b>2008</b>	<b>2009</b>	<b>2010</b>	<b>2011</b>	<b>2012</b>	<b>2013</b>	<b>2014</b>	<b>2015</b>	<b>2016</b>
AE	1,564	1,605	1,636	1,672	1,702	1,735	1,774	1,809	1,840	1,871	1,889
BGE	4,681	4,754	4,806	4,831	4,849	4,947	5,039	5,088	5,120	5,140	5,182
DPL	2,591	2,636	2,682	2,727	2,753	2,824	2,880	2,936	2,984	3,027	3,081
JCPL	3,388	3,477	3,557	3,646	3,721	3,799	3,894	3,972	4,049	4,129	4,185
METED	2,111	2,143	2,172	2,202	2,227	2,281	2,325	2,357	2,377	2,403	2,438
PECO	5,509	5,588	5,658	5,718	5,730	5,865	5,969	6,033	6,096	6,155	6,208
PENLC	2,423	2,463	2,510	2,551	2,588	2,642	2,690	2,730	2,767	2,800	2,836
PEPCO	4,521	4,599	4,668	4,713	4,736	4,767	4,900	4,957	5,011	5,032	5,030
PL	5,559	5,624	5,695	5,755	5,812	5,911	6,006	6,086	6,148	6,214	6,284
PS	6,554	6,710	6,788	6,898	6,980	7,047	7,215	7,317	7,412	7,515	7,539
RECO	222	228	227	228	225	226	234	235	232	234	231
UGI	150	152	154	155	156	159	162	163	165	166	168
DIVERSITY (-)	889	905	918	930	939	956	976	989	1,001	1,012	1,020
PJM MID-ATLANTIC	38,384	39,074	39,635	40,166	40,540	41,247	42,112	42,694	43,200	43,674	44,051
FE/GPU	7,780	7,938	8,092	8,249	8,383	8,566	8,750	8,897	9,028	9,165	9,290
PLGRP	5,706	5,773	5,846	5,907	5,965	6,067	6,164	6,245	6,309	6,376	6,448

**Table B-4**

**FALL (OCTOBER) PEAK LOAD (MW) AND GROWTH RATES FOR  
EACH PJM WESTERN AND PJM SOUTHERN GEOGRAPHIC ZONE AND SUM OF GEOGRAPHIC ZONES**

	<b>2006</b>	<b>2007</b>	<b>2008</b>	<b>2009</b>	<b>2010</b>	<b>2011</b>	<b>2012</b>	<b>2013</b>	<b>2014</b>	<b>2015</b>	<b>2016</b>
AEP	18,512	18,752	18,992	19,122	19,316	19,677	19,988	20,217	20,411	20,494	20,737
APS	6,362	6,434	6,491	6,550	6,616	6,728	6,834	6,909	6,954	6,991	7,077
COMED	14,110	14,574	15,054	15,490	15,853	16,399	16,902	17,305	17,699	18,083	18,397
DAY	2,551	2,601	2,640	2,686	2,732	2,793	2,867	2,912	2,941	2,978	3,024
DLCO	1,913	1,931	1,948	1,962	1,972	1,987	2,016	2,031	2,045	2,059	2,066
DIVERSITY (-)	1,158	1,181	1,203	1,221	1,239	1,268	1,296	1,316	1,334	1,349	1,367
PJM WESTERN	42,290	43,111	43,922	44,589	45,250	46,316	47,311	48,058	48,716	49,256	49,934
DOM	12,840	13,162	13,373	13,563	13,676	14,049	14,503	14,774	15,005	15,145	15,390
DIVERSITY (-)	1,686	1,719	1,748	1,773	1,793	1,832	1,874	1,903	1,928	1,949	1,972
PJM RTO	91,828	93,628	95,182	96,545	97,672	99,780	102,053	103,623	104,993	106,127	107,402



Table B-5

MONTHLY PEAK FORECAST (MW) FOR EACH  
PJM MID-ATLANTIC GEOGRAPHIC ZONE AND DIVERSIFIED SUM OF GEOGRAPHIC ZONES

	AE	BGE	DPL	JCPL	METED	PECO	PENLC	PEPCO	PL	PS	RECO	UGI	MID-ATLANTIC DIVERSITY	PJM MID- ATLANTIC
Jan 2006	1,756	5,836	3,282	3,872	2,467	6,381	2,702	5,285	6,929	6,890	227	192	675	45,144
Feb 2006	1,680	5,626	3,173	3,703	2,392	6,140	2,638	5,102	6,677	6,661	217	183	692	43,500
Mar 2006	1,597	5,141	2,897	3,519	2,259	5,748	2,526	4,657	6,228	6,352	205	171	432	40,868
Apr 2006	1,505	4,701	2,589	3,259	2,095	5,366	2,386	4,389	5,640	6,164	200	152	1,253	37,193
May 2006	1,860	5,503	2,967	4,383	2,259	6,422	2,356	5,583	5,759	8,142	300	147	777	44,904
Jun 2006	2,368	6,657	3,682	5,703	2,628	7,823	2,652	6,549	6,583	9,963	381	171	390	54,770
Jul 2006	2,679	7,212	3,994	6,335	2,773	8,337	2,742	6,953	6,969	10,701	417	187	557	58,742
Aug 2006	2,580	7,009	3,865	5,812	2,719	8,059	2,725	6,750	6,776	10,053	375	181	550	56,354
Sep 2006	2,172	6,148	3,286	4,967	2,401	6,966	2,513	5,924	6,077	8,837	315	157	864	48,899
Oct 2006	1,564	4,681	2,591	3,388	2,111	5,509	2,423	4,521	5,559	6,554	222	150	889	38,384
Nov 2006	1,635	5,063	2,858	3,640	2,287	5,880	2,571	4,642	6,202	6,601	221	169	390	41,379
Dec 2006	1,800	5,653	3,157	3,996	2,469	6,343	2,760	5,120	6,734	7,049	239	193	306	45,207
Jan 2007	1,788	5,917	3,290	3,970	2,514	6,461	2,755	5,378	6,997	7,018	229	194	685	45,826
Feb 2007	1,715	5,710	3,183	3,795	2,434	6,217	2,692	5,185	6,737	6,782	219	185	703	44,151
Mar 2007	1,633	5,220	2,906	3,612	2,304	5,816	2,577	4,733	6,301	6,469	207	173	439	41,512
Apr 2007	1,547	4,776	2,619	3,356	2,149	5,448	2,438	4,498	5,736	6,276	201	155	1,278	37,921
May 2007	1,905	5,600	2,990	4,509	2,310	6,511	2,404	5,665	5,837	8,297	302	149	790	45,689
Jun 2007	2,420	6,747	3,703	5,850	2,675	7,894	2,691	6,643	6,634	10,124	381	173	396	55,539
Jul 2007	2,736	7,291	4,040	6,509	2,823	8,431	2,795	7,021	7,080	10,841	421	189	566	59,611
Aug 2007	2,636	7,104	3,912	5,960	2,762	8,156	2,768	6,849	6,867	10,217	379	183	559	57,234
Sep 2007	2,220	6,192	3,320	5,065	2,440	7,015	2,547	5,983	6,129	8,939	318	157	874	49,451
Oct 2007	1,605	4,754	2,636	3,477	2,143	5,588	2,463	4,599	5,624	6,710	228	152	905	39,074
Nov 2007	1,665	5,109	2,897	3,711	2,311	5,935	2,610	4,705	6,230	6,702	222	170	394	41,873
Dec 2007	1,829	5,687	3,200	4,074	2,501	6,413	2,806	5,187	6,794	7,169	241	195	310	45,786
Jan 2008	1,818	5,976	3,347	4,058	2,543	6,529	2,799	5,471	7,049	7,137	232	196	695	46,460
Feb 2008	1,747	5,764	3,223	3,879	2,468	6,283	2,734	5,252	6,795	6,895	221	187	712	44,736
Mar 2008	1,661	5,275	2,954	3,681	2,337	5,886	2,620	4,802	6,354	6,582	209	174	445	42,090
Apr 2008	1,591	4,841	2,675	3,484	2,182	5,610	2,484	4,591	5,824	6,424	207	157	1,306	38,764
May 2008	1,947	5,661	3,042	4,608	2,338	6,591	2,448	5,733	5,892	8,389	304	151	801	46,303
Jun 2008	2,468	6,837	3,779	6,002	2,728	8,034	2,750	6,739	6,758	10,315	390	176	403	56,573
Jul 2008	2,788	7,448	4,150	6,676	2,882	8,588	2,861	7,200	7,208	11,121	429	192	578	60,965
Aug 2008	2,682	7,187	3,998	6,102	2,807	8,278	2,817	6,958	6,930	10,380	384	184	568	58,139
Sep 2008	2,273	6,317	3,432	5,239	2,494	7,219	2,611	6,098	6,247	9,246	326	161	897	50,766
Oct 2008	1,636	4,806	2,682	3,557	2,172	5,658	2,510	4,668	5,695	6,788	227	154	918	39,635
Nov 2008	1,679	5,095	2,916	3,740	2,321	5,962	2,638	4,709	6,221	6,762	223	171	396	42,041
Dec 2008	1,856	5,764	3,264	4,137	2,526	6,505	2,836	5,267	6,858	7,237	243	197	314	46,376

Table B-5

MONTHLY PEAK FORECAST (MW) FOR EACH  
PJM WESTERN AND PJM SOUTHERN GEOGRAPHIC ZONE AND DIVERSIFIED SUM OF GEOGRAPHIC ZONES

	AEP	APS	COMED	DAY	DLCO	WESTERN DIVERSITY	PJM WESTERN	DOM	RTO DIVERSITY	PJM RTO
Jan 2006	22,341	7,872	15,350	2,928	2,104	1,105	49,490	16,401	993	110,042
Feb 2006	21,531	7,602	14,785	2,817	2,025	696	48,064	15,628	1,456	105,735
Mar 2006	20,071	7,089	14,067	2,651	1,947	845	44,980	13,985	1,062	98,772
Apr 2006	18,516	6,458	13,652	2,545	1,902	1,054	42,019	12,662	1,056	90,817
May 2006	19,497	6,485	16,694	2,790	2,185	1,175	46,476	14,472	2,219	103,634
Jun 2006	22,281	7,614	20,890	3,271	2,665	812	55,909	17,289	2,275	125,693
Jul 2006	23,290	8,030	22,194	3,414	2,815	1,440	58,303	18,398	1,943	133,500
Aug 2006	23,093	7,819	22,040	3,368	2,698	446	58,572	17,971	1,729	131,169
Sep 2006	20,937	7,030	18,481	3,032	2,415	726	51,169	15,705	3,241	112,532
Oct 2006	18,512	6,362	14,110	2,551	1,913	1,158	42,290	12,840	1,686	91,828
Nov 2006	20,058	7,000	14,753	2,736	1,984	468	46,063	14,006	833	100,615
Dec 2006	21,865	7,767	16,054	2,956	2,129	472	50,299	15,692	1,050	110,147
	AEP	APS	COMED	DAY	DLCO	WESTERN DIVERSITY	PJM WESTERN	DOM	RTO DIVERSITY	PJM RTO
Jan 2007	22,649	7,993	15,879	2,988	2,124	1,128	50,505	16,772	989	112,114
Feb 2007	21,829	7,718	15,275	2,877	2,044	710	49,033	15,969	1,483	107,670
Mar 2007	20,370	7,202	14,542	2,708	1,964	862	45,924	14,304	1,082	100,658
Apr 2007	18,835	6,564	14,150	2,609	1,924	1,079	43,003	12,957	1,079	92,802
May 2007	19,776	6,591	17,203	2,857	2,206	1,199	47,434	14,814	2,262	105,674
Jun 2007	22,521	7,672	21,350	3,326	2,667	824	56,712	17,615	2,309	127,558
Jul 2007	23,585	8,123	22,638	3,474	2,829	1,462	59,187	18,712	1,763	135,747
Aug 2007	23,355	7,895	22,595	3,427	2,715	453	59,534	18,308	1,757	133,319
Sep 2007	21,017	7,098	18,883	3,071	2,420	734	51,755	15,906	3,279	113,833
Oct 2007	18,752	6,434	14,574	2,601	1,931	1,181	43,111	13,162	1,719	93,628
Nov 2007	20,265	7,059	15,176	2,781	1,997	476	46,802	14,254	845	102,083
Dec 2007	22,086	7,834	16,504	3,005	2,145	480	51,094	16,016	1,066	111,829
	AEP	APS	COMED	DAY	DLCO	WESTERN DIVERSITY	PJM WESTERN	DOM	RTO DIVERSITY	PJM RTO
Jan 2008	22,853	8,064	16,300	3,024	2,137	1,144	51,234	17,073	1,000	113,768
Feb 2008	22,037	7,783	15,696	2,922	2,060	721	49,777	16,263	1,505	109,271
Mar 2008	20,590	7,276	14,989	2,754	1,978	877	46,710	14,584	1,100	102,284
Apr 2008	19,086	6,633	14,812	2,649	1,939	1,104	44,015	13,256	1,104	94,931
May 2008	19,920	6,633	17,684	2,898	2,217	1,217	48,135	15,058	2,295	107,201
Jun 2008	22,841	7,824	21,979	3,384	2,687	841	57,874	17,947	2,353	130,041
Jul 2008	23,943	8,248	23,888	3,573	2,881	1,507	61,026	19,238	2,266	138,962
Aug 2008	23,667	7,981	23,106	3,496	2,734	460	60,524	18,664	1,786	135,541
Sep 2008	21,580	7,221	19,708	3,174	2,482	758	53,407	16,389	3,375	117,187
Oct 2008	18,992	6,491	15,054	2,640	1,948	1,203	43,922	13,373	1,748	95,182
Nov 2008	20,315	7,089	15,550	2,791	1,994	480	47,259	14,377	851	102,825
Dec 2008	22,155	7,869	16,910	3,023	2,147	485	51,619	16,383	1,080	113,297

**Table B-6**

**MONTHLY PEAK FORECAST (MW)  
FOR FE/GPU AND PLGRP**

	<b>FE/GPU</b>	<b>PLGRP</b>
Jan 2006	8,980	7,117
Feb 2006	8,659	6,857
Mar 2006	8,246	6,397
Apr 2006	7,535	5,790
May 2006	8,771	5,901
Jun 2006	10,892	6,753
Jul 2006	11,724	7,152
Aug 2006	11,145	6,953
Sep 2006	9,744	6,229
Oct 2006	7,780	5,706
Nov 2006	8,440	6,367
Dec 2006	9,148	6,923
	<b>FE/GPU</b>	<b>PLGRP</b>
Jan 2007	9,176	7,187
Feb 2007	8,845	6,919
Mar 2007	8,433	6,472
Apr 2007	7,733	5,889
May 2007	8,990	5,981
Jun 2007	11,123	6,806
Jul 2007	11,998	7,265
Aug 2007	11,377	7,046
Sep 2007	9,912	6,280
Oct 2007	7,938	5,773
Nov 2007	8,573	6,396
Dec 2007	9,303	6,985
	<b>FE/GPU</b>	<b>PLGRP</b>
Jan 2008	9,336	7,241
Feb 2008	9,004	6,979
Mar 2008	8,577	6,526
Apr 2008	7,934	5,979
May 2008	9,157	6,038
Jun 2008	11,385	6,933
Jul 2008	12,287	7,396
Aug 2008	11,610	7,110
Sep 2008	10,200	6,402
Oct 2008	8,092	5,846
Nov 2008	8,639	6,388
Dec 2008	9,420	7,051

TABLE B-7

TREATMENT OF PJM MID-ATLANTIC ACTIVE LOAD MANAGEMENT IN PLANNING (MW)  
PLACED UNDER PJM COORDINATION - SUMMER

	2006	2007	2008	2009	2010	2011	2012	2013	2014	2015	2016
AE											
a) CONTRACTUALLY INTERRUPTIBLE	0	0	0	0	0	0	0	0	0	0	0
b) DIRECT CONTROL	0	0	0	0	0	0	0	0	0	0	0
TOTAL	0	0	0	0	0	0	0	0	0	0	0
BGE											
a) CONTRACTUALLY INTERRUPTIBLE	0	0	0	0	0	0	0	0	0	0	0
b) DIRECT CONTROL	234	234	234	234	234	234	234	234	234	234	234
TOTAL	234	234	234	234	234	234	234	234	234	234	234
DPL											
a) CONTRACTUALLY INTERRUPTIBLE	26	26	26	26	26	26	26	26	26	26	26
b) DIRECT CONTROL	32	32	32	32	32	32	32	32	32	32	32
TOTAL	58	58	58	58	58	58	58	58	58	58	58
JCPL											
a) CONTRACTUALLY INTERRUPTIBLE	0	0	0	0	0	0	0	0	0	0	0
b) DIRECT CONTROL	58	58	58	58	58	58	58	58	58	58	58
TOTAL	58	58	58	58	58	58	58	58	58	58	58
METED											
a) CONTRACTUALLY INTERRUPTIBLE	45	45	45	45	45	45	45	45	45	45	45
b) DIRECT CONTROL	0	0	0	0	0	0	0	0	0	0	0
TOTAL	45	45	45	45	45	45	45	45	45	45	45
PECO											
a) CONTRACTUALLY INTERRUPTIBLE	88	88	88	88	88	88	88	88	88	88	88
b) DIRECT CONTROL	0	0	0	0	0	0	0	0	0	0	0
TOTAL	88	88	88	88	88	88	88	88	88	88	88
PENLC											
a) CONTRACTUALLY INTERRUPTIBLE	0	0	0	0	0	0	0	0	0	0	0
b) DIRECT CONTROL	0	0	0	0	0	0	0	0	0	0	0
TOTAL	0	0	0	0	0	0	0	0	0	0	0
PEPCO											
a) CONTRACTUALLY INTERRUPTIBLE	0	0	0	0	0	0	0	0	0	0	0
b) DIRECT CONTROL	0	0	0	0	0	0	0	0	0	0	0
TOTAL	0	0	0	0	0	0	0	0	0	0	0
PL											
a) CONTRACTUALLY INTERRUPTIBLE	285	285	285	285	285	285	285	285	285	285	285
b) DIRECT CONTROL	0	0	0	0	0	0	0	0	0	0	0
TOTAL	285	285	285	285	285	285	285	285	285	285	285
PS											
a) CONTRACTUALLY INTERRUPTIBLE	0	0	0	0	0	0	0	0	0	0	0
b) DIRECT CONTROL	122	122	122	122	122	122	122	122	122	122	122
TOTAL	122	122	122	122	122	122	122	122	122	122	122
RECO											
a) CONTRACTUALLY INTERRUPTIBLE	0	0	0	0	0	0	0	0	0	0	0
b) DIRECT CONTROL	0	0	0	0	0	0	0	0	0	0	0
TOTAL	0	0	0	0	0	0	0	0	0	0	0
UGI											
a) CONTRACTUALLY INTERRUPTIBLE	0	0	0	0	0	0	0	0	0	0	0
b) DIRECT CONTROL	0	0	0	0	0	0	0	0	0	0	0
TOTAL	0	0	0	0	0	0	0	0	0	0	0
PJM MID-ATLANTIC											
a) CONTRACTUALLY INTERRUPTIBLE	444	444	444	444	444	444	444	444	444	444	444
b) DIRECT CONTROL	446	446	446	446	446	446	446	446	446	446	446
TOTAL	890	890	890	890	890	890	890	890	890	890	890

**TABLE B-7**

**TREATMENT OF PJM WESTERN AND PJM SOUTHERN ACTIVE LOAD MANAGEMENT IN PLANNING (MW)  
PLACED UNDER PJM COORDINATION - SUMMER**

	2006	2007	2008	2009	2010	2011	2012	2013	2014	2015	2016
<b>AEP</b>											
a) CONTRACTUALLY INTERRUPTIBLE	774	774	774	774	774	774	774	774	774	774	774
b) DIRECT CONTROL	0	0	0	0	0	0	0	0	0	0	0
TOTAL	774	774	774	774	774	774	774	774	774	774	774
<b>APS</b>											
a) CONTRACTUALLY INTERRUPTIBLE	13	13	13	13	13	13	13	13	13	13	13
b) DIRECT CONTROL	0	0	0	0	0	0	0	0	0	0	0
TOTAL	13	13	13	13	13	13	13	13	13	13	13
<b>COMED</b>											
a) CONTRACTUALLY INTERRUPTIBLE	300	300	300	300	300	300	300	300	300	300	300
b) DIRECT CONTROL	72	72	72	72	72	72	72	72	72	72	72
TOTAL	372	372	372	372	372	372	372	372	372	372	372
<b>DAY</b>											
a) CONTRACTUALLY INTERRUPTIBLE	3	3	3	3	3	3	3	3	3	3	3
b) DIRECT CONTROL	0	0	0	0	0	0	0	0	0	0	0
TOTAL	3	3	3	3	3	3	3	3	3	3	3
<b>DLCO</b>											
a) CONTRACTUALLY INTERRUPTIBLE	9	9	9	9	9	9	9	9	9	9	9
b) DIRECT CONTROL	0	0	0	0	0	0	0	0	0	0	0
TOTAL	9	9	9	9	9	9	9	9	9	9	9
<b>PJM WESTERN</b>											
a) CONTRACTUALLY INTERRUPTIBLE	1099	1099	1099	1099	1099	1099	1099	1099	1099	1099	1099
b) DIRECT CONTROL	72	72	72	72	72	72	72	72	72	72	72
TOTAL	1171	1171	1171	1171	1171	1171	1171	1171	1171	1171	1171
<b>DOM</b>											
a) CONTRACTUALLY INTERRUPTIBLE	0	0	0	0	0	0	0	0	0	0	0
b) DIRECT CONTROL	0	0	0	0	0	0	0	0	0	0	0
TOTAL	0	0	0	0	0	0	0	0	0	0	0
<b>PJM RTO</b>											
a) CONTRACTUALLY INTERRUPTIBLE	1543	1543	1543	1543	1543	1543	1543	1543	1543	1543	1543
b) DIRECT CONTROL	518	518	518	518	518	518	518	518	518	518	518
TOTAL	2061	2061	2061	2061	2061	2061	2061	2061	2061	2061	2061

**TABLE C-1**

**PJM GEOGRAPHIC ZONES**

**CENTRAL MID-ATLANTIC: BGE, METED, PEPCO, PL AND UGI 50/50 SEASONAL PEAKS - MW**

<b>YEAR</b>	<b>SPRING (WK 14-19)</b>	<b>SUMMER (WK 20-39)</b>	<b>FALL (WK 40-45)</b>	<b>WINTER (WK 46-13)</b>
2006	16,515	23,878	16,602	20,552
2007	16,843	24,185	16,846	20,840
2008	17,116	24,707	17,063	21,074
2009	17,369	25,019	17,220	21,317
2010	17,530	25,323	17,341	21,564
2011	17,721	25,641	17,619	21,848
2012	17,966	25,895	17,977	22,113
2013	18,294	26,313	18,191	22,368
2014	18,449	26,662	18,357	22,581
2015	18,656	26,943	18,487	22,765
2016	18,758	27,151	18,631	22,985

**TABLE C-2**

**PJM GEOGRAPHIC ZONES  
WESTERN MID-ATLANTIC: METED, PENLC, PL AND UGI 50/50 SEASONAL PEAKS - MW**

<b>YEAR</b>	<b>SPRING (WK 14-19)</b>	<b>SUMMER (WK 20-39)</b>	<b>FALL (WK 40-45)</b>	<b>WINTER (WK 46-13)</b>
2006	10,123	12,594	10,132	12,246
2007	10,325	12,808	10,270	12,416
2008	10,492	13,063	10,417	12,542
2009	10,649	13,242	10,548	12,709
2010	10,766	13,417	10,666	12,874
2011	10,921	13,611	10,874	13,049
2012	11,099	13,819	11,062	13,217
2013	11,291	14,032	11,213	13,359
2014	11,418	14,246	11,333	13,502
2015	11,552	14,413	11,458	13,643
2016	11,650	14,543	11,599	13,801

**TABLE C-3**

**PJM GEOGRAPHIC ZONES**

**EASTERN MID-ATLANTIC: AE, DPL, JCPL, PECO, PS AND RECO 50/50 SEASONAL PEAKS - MW**

<b>YEAR</b>	<b>SPRING (WK 14-19)</b>	<b>SUMMER (WK 20-39)</b>	<b>FALL (WK 40-45)</b>	<b>WINTER (WK 46-13)</b>
2006	18,597	32,303	19,550	22,199
2007	18,952	32,815	19,960	22,544
2008	19,482	33,585	20,260	22,905
2009	19,837	34,229	20,596	23,285
2010	20,081	34,769	20,815	23,667
2011	20,336	35,335	21,194	24,084
2012	20,682	35,905	21,658	24,472
2013	21,238	36,586	21,989	24,879
2014	21,533	37,244	22,296	25,228
2015	21,828	37,807	22,609	25,566
2016	21,959	38,264	22,808	25,918



**TABLE C-4**

**PJM GEOGRAPHIC ZONES  
SOUTHERN MID-ATLANTIC: BGE AND PEPSCO 50/50 SEASONAL PEAKS - MW**

<b>YEAR</b>	<b>SPRING (WK 14-19)</b>	<b>SUMMER (WK 20-39)</b>	<b>FALL (WK 40-45)</b>	<b>WINTER (WK 46-13)</b>
2006	8,985	14,107	9,119	11,083
2007	9,167	14,253	9,268	11,256
2008	9,323	14,588	9,388	11,408
2009	9,470	14,771	9,458	11,534
2010	9,555	14,942	9,498	11,664
2011	9,634	15,114	9,626	11,820
2012	9,755	15,211	9,849	11,966
2013	9,939	15,472	9,954	12,123
2014	10,009	15,651	10,039	12,236
2015	10,124	15,806	10,080	12,319
2016	10,156	15,914	10,120	12,421

**TABLE D-1****PJM RTO HISTORICAL PEAKS  
(MW)****SUMMER**

<b>YEAR</b>	<b>NORMALIZED BASE</b>	<b>NORMALIZED COOLING</b>	<b>NORMALIZED TOTAL</b>	<b>UNRESTRICTED PEAK</b>	<b>PEAK DATE/TIME</b>
1998	72,950	38,170	111,120	114,996	07/21/1998 17:00
1999	73,990	42,980	116,970	121,655	07/06/1999 17:00
2000	76,300	40,080	116,380	114,178	08/09/2000 17:00
2001	75,990	45,080	121,070	131,116	08/09/2001 16:00
2002	77,140	48,120	125,260	130,360	08/01/2002 17:00
2003	77,650	46,700	124,350	126,332	08/21/2003 17:00
2004	79,670	43,810	123,480	120,235	06/09/2004 17:00
2005	79,000	53,270	132,270	134,219	07/26/2005 16:00

**WINTER**

<b>YEAR</b>	<b>NORMALIZED BASE</b>	<b>NORMALIZED HEATING</b>	<b>NORMALIZED TOTAL</b>	<b>UNRESTRICTED PEAK</b>	<b>PEAK DATE/TIME</b>
97/98				88,970	01/14/1998 19:00
98/99				99,982	01/05/1999 19:00
99/00				102,359	01/27/2000 20:00
00/01				101,717	12/20/2000 19:00
01/02				97,294	01/03/2002 19:00
02/03				112,755	01/23/2003 19:00
03/04				106,760	01/26/2004 19:00
04/05				114,061	12/20/2004 19:00
05/06				110,415	12/14/2005 19:00

Note: Normalized values calculated by PJM staff using the bottom-up coincident peak weather-normalization methodology.

**TABLE D-2**

**PJM RTO HISTORICAL NET ENERGY  
(GWH)**

<b>YEAR</b>	<b>ENERGY</b>	<b>GROWTH RATE</b>
1993	596,076	-
1994	597,975	0.3%
1995	618,984	3.5%
1996	613,127	-0.9%
1997	615,421	0.4%
1998	620,061	0.8%
1999	636,404	2.6%
2000	651,190	2.3%
2001	651,319	0.0%
2002	673,526	3.4%
2003	674,471	0.1%
2004	689,008	2.2%
2005*	709,112	2.9%

Note: All historic net energy values represent the PJM RTO footprint at the time of publishing.

\*Estimated