









# Easement Education

Jonathan Thompson  
Interconnection Projects Department  
Interconnection Process Subcommittee  
March 22, 2024

## Site Control Term

|   |         | Generating Facility   | Interconnection Facility  | Interconnection Switchyard   |
|---|---------|---|---|--|
| <b>Submission 1</b><br>Application Phase                | Full    |  <b>100%</b><br>Deed   Lease   Option<br>(See Note 1)      | Not Required  | Not Required   |
| Term Requirement  |         | 1 year from Application Deadline  |   |  |
| <b>Submission 2</b><br>Decision Point 1<br>(See Note 2) | Partial |  <b>100%</b><br>Deed   Lease   Option                      |  <b>50%</b><br>Deed   Lease   Option   Right-of-Way  |  <b>50%</b><br>Deed   Lease   Option                  |
| Term Requirement  |         | 1 year from last day of Phase 1   |   |  |
| <b>Submission 3</b><br>Decision Point 3<br>(See Note 3) | Full    |  <b>100%</b><br>Deed   Lease   Option                      |  <b>100%</b><br>Deed   Lease   Option   Right-of-Way |  <b>100%</b><br>Deed   Lease   Option<br>(See Note 4) |
| Term Requirement  |         | Additional 1 year from last day of Phase 3 (for Transition Cycles #1 and #2)<br>Additional 3 years from last day of Phase 3 (for new Cycle) |   |  |

 = 100% Site Control Required

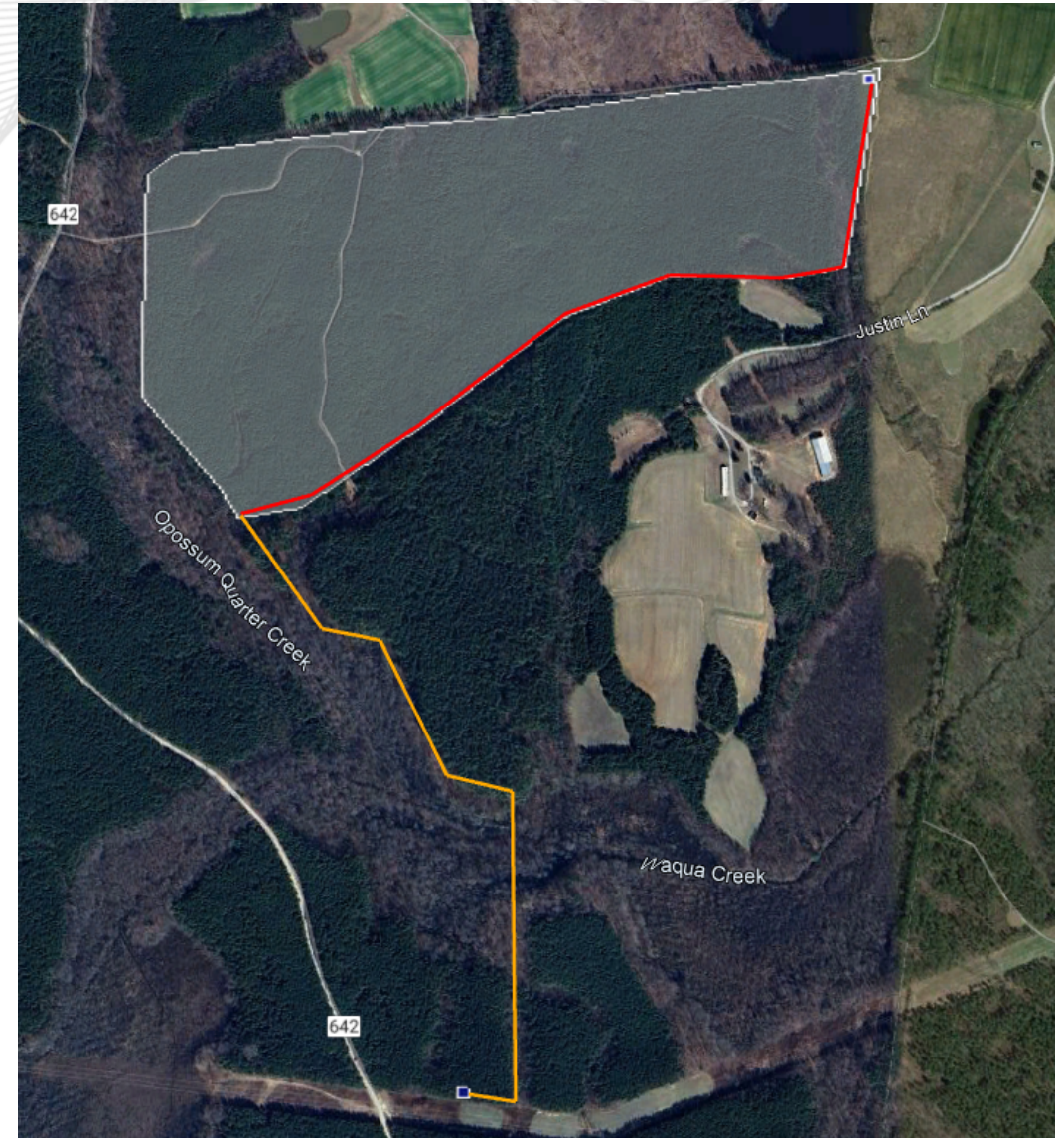
 = 50% Site Control Required

- All site control must meet Tariff, Part VII, Subpart A, section 302 requirements
- Easement evidence must demonstrate the three key elements
  - Term
    - 1 year from the last day of Phase 1
  - Exclusivity
  - Conveyance

- Provide evidence of an easement granted to Project Developer demonstrating allowance for:
  - installation, operation, maintenance, repair and replacement of poles and fixtures for generator lead line
- Provide complete un-redacted copy of recorded easement
  - Redactions of financials allowed
- Easement grants the developer exclusive use and right to install, etc. within easement area
- Contains as exhibit a survey of the easement area depicting easement along with a legal metes and bounds description of the easement area



- Evidence must cover 50% of the linear distance of the easement corridor, displayed in orange
  - Easements needed beyond Generating Facility
- Generator tie utilizing existing Generating Facility does not meet requirements
- Site plan must match provided site control evidence



- 50% site control of interconnection switchyard must be provided with DP1 submission
- Evidence via deed, lease, option to lease or purchase
  - Memorandums are not acceptable
  - Evidence of intent to control Site not acceptable
- Many are on Generating Facility Sites

| kV Level         | Acreage Required | Acreage at DP1 |
|------------------|------------------|----------------|
| 115 kV and below | 4 acres          | 2 acres        |
| 230 + 345 kV     | 6 acres          | 3 acres        |
| 500 kV           | 8 acres          | 4 acres        |

Presenter:  
Jonathan Thompson

[Jonathan.thompson@pjm.com](mailto:Jonathan.thompson@pjm.com)



Member Hotline

(610) 666 – 8980

(866) 400 – 8980

[custsvc@pjm.com](mailto:custsvc@pjm.com)