



# Two-Step Verification

June 13, 2018

# What Does Two-Step Verification Provide?

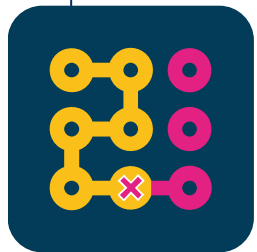


Provides an extra layer of security to PJM's single sign on tools



Uses a password and additional information – a token

- Used by banks, government sites and some email providers



Prevents a breach even if a password is successfully compromised



Already in use with PJM's Account Manager application

# How Does Two-Step Verification Work?

Triggered on logon from an unrecognized device

Uses a password and email token combination

Leverages valid email addresses

Validated email addresses become essential

CAMs will be able to manage email domains (e.g., @pjm.com)

PJM will provide a means to manage email domains

**1**

**Sign in**

Username:

Password:

[Sign in](#)

[Forgot Password](#)

[Register](#)

NOTICE: This system and the information processed or contained within is for the use of authorized users only. At any time, and for any lawful purpose, PJM may monitor, intercept, record and search any communications or data transiting or stored on this information system, and may disclose such communications or data to the U.S. Government and its authorized representatives. Anyone using this system expressly consents to the terms and conditions contained in this notice. Individuals using this computer system without authority, or in excess of their authority, are advised that if monitoring reveals possible improper or criminal activity, system personnel may provide the evidence of such monitoring to management or law enforcement officials for disciplinary proceedings and/or criminal and civil proceedings under local and foreign laws.

**2**

## PJM Account Manager Soft Token

Account Manager\_STG <accountmanager-donotreply@pjm.com>

Sent: Mon 10/16/2017 12:08 PM

To: [REDACTED]

Hello [REDACTED]

You have requested a Soft Token for [REDACTED]

Your Soft Token is **08188826**

Please return to your browser and enter this token into the form to finish your login.

**Note that this Soft Token will expire in 10 minutes.**

**3**

**Enter Soft Token**

Soft Token:

[Finish Login](#) [Sign Out](#)

[Request New Soft Token](#)

NOTICE: This system and the information processed or contained within is for the use of authorized users only. At any time, and for any lawful purpose, PJM may monitor, intercept, record and search any communications or data transiting or stored on this information system, and may disclose such communications or data to the U.S. Government and its authorized representatives. Anyone using this system expressly consents to the terms and conditions contained in this notice. Individuals using this computer system without authority, or in excess of their authority, are advised that if monitoring reveals possible improper or criminal activity, system personnel may provide the evidence of such monitoring to management or law enforcement officials for disciplinary proceedings and/or criminal and civil proceedings under local and foreign laws.

## Single User Multi Account (SUMA)

- Reduces the number of accounts

## Works with mobile devices

## Allows up to five unique devices per user

- Browsers
- Laptops/  
computers

## Screen resolution

- No longer a factor in device identification

## Only Browser-based Interactions

- No Browserless/API impacts at this time

## Only Single Sign-On Applications

- Does not include PJM.com, eDART, eGADS

Area	Impact	Action Required
Browserless (XML API)	None	None
Browser	One time password requirement with each new device	Ensure email address is valid

## May 31

SUMA available for all applications (except eCredit, MSRS and Oasis in training environment)



May

## September 10

Two-step verification goes live in the production environment for PJM employees

## September 30

- Participants consolidate sub-account user accounts into appropriate SUMA accounts
- Email verification feature available in production environment



September

August



October



## Late June

SUMA available for all applications (except eCredit, MSRS and Oasis in production environment )

## August 10

Participants consolidate subaccount user accounts into SUMA accounts in the training environment

## August 15

Two-step verification goes live in training

## August 31

Email verification feature available in training environment

## October 10

Two-step verification goes live in the production environment for stakeholders



	Apr	May	Jun	Jul	Aug	Sep	Oct	Nov	Dec
Two-Step Verification					 <b>Train:</b> August 15		 <b>Production:</b> October 10		

